



NEW MEXICO ENERGY, MINERALS and NATURAL RESOURCES DEPARTMENT

GARY E. JOHNSON
Governor
Jennifer A. Salisbury
Cabinet Secretary

Lori Wrotenbery
Director
Oil Conservation Division

August 15, 2000

Amoco Production Co
SJ Oper CTR 200 S Amoco Court
Farmington NM 87401

Re: Keys Gas Com A #2, F-27-32N-10W, API# 30-045-24825

Gentlemen:

Your request for a below grade abandonment marker for the referenced well is hereby approved.

Sincerely,

A handwritten signature in black ink, appearing to read "FTC" followed by a stylized flourish.

Frank T. Chavez
District Supervisor
ftchavez@state.nm.us

FTC/mk

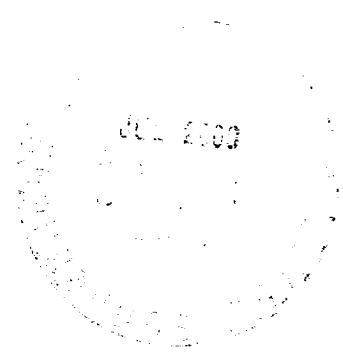
il

Keys Gas Com A

BP Amoco



**Amoco Production Company
San Juan Operations Center
200 Amoco Court
Farmington, New Mexico 87401**



July 21, 2000
Frank Chavez
District Supervisor
New Mexico Oil Conservation Division
1000 Rio Brazos Road
Aztec, NM 87401

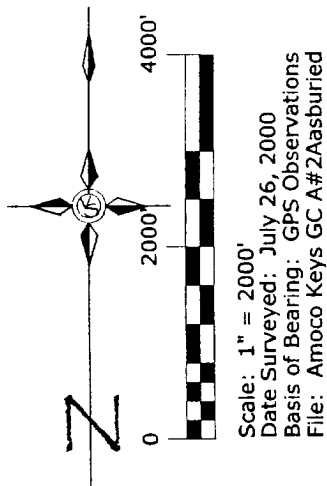
P&A Keys Gas Com A -2

Amoco has completed the plug and abandonment of the Keys Gas Com A No 2 Dakota located in Section 27, Township 32N, Range 10W. Due to the well being located on irrigated farm land, the landowner has requested that we bury the P&A marker. This has been done in compliance to State Law 202B, Rule 5, dated March 1, 2000 titled Below Ground Plugging and Abandonment. A survey of the marker will be completed and a copy forwarded to your office.

A handwritten signature in cursive script, appearing to read 'Baynard Duke'.

Baynard Duke
Field Foreman

Supplemental Sketch Showing Location of Buried P & A Well
Keys Gas Com A # 2A
 within Section 27, T32N, R10W, N.M.P.M.,
 San Juan County, New Mexico
 for
 Amoco Production Company



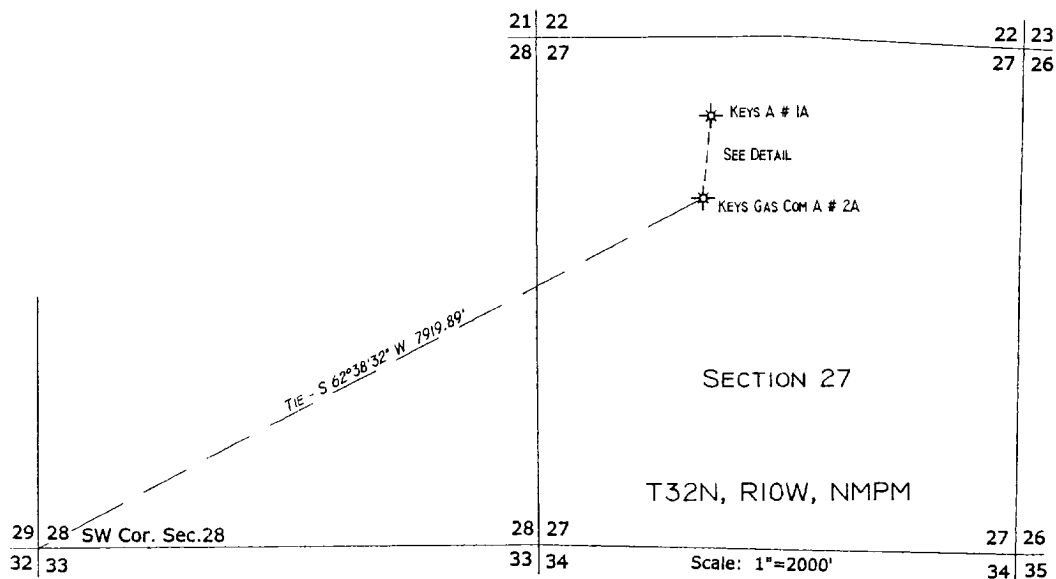
EXISTING WELL HEAD
 KEYS A # 1A
 OGCC FOOTAGE: 800'F/NL 1850'F/WL

TIE - N 05°26'32" E 846.67'

DETAIL SCALE: 1"=200'

LAT: 36°57'32.427"
 LONG: 107°52'20.109"
 NAD 83

EXISTING BURIED PLUG MARKER
 KEYS GAS COM A # 2A
 OGCC FOOTAGE: 1660' F/NL 1770'F/WL
 NOTE: FOOTAGE VERIFIED



SECTION 27
 T32N, R10W, NMPPM

VANN SURVEYS
 P. O. Box 1306
 Farmington, NM 87499