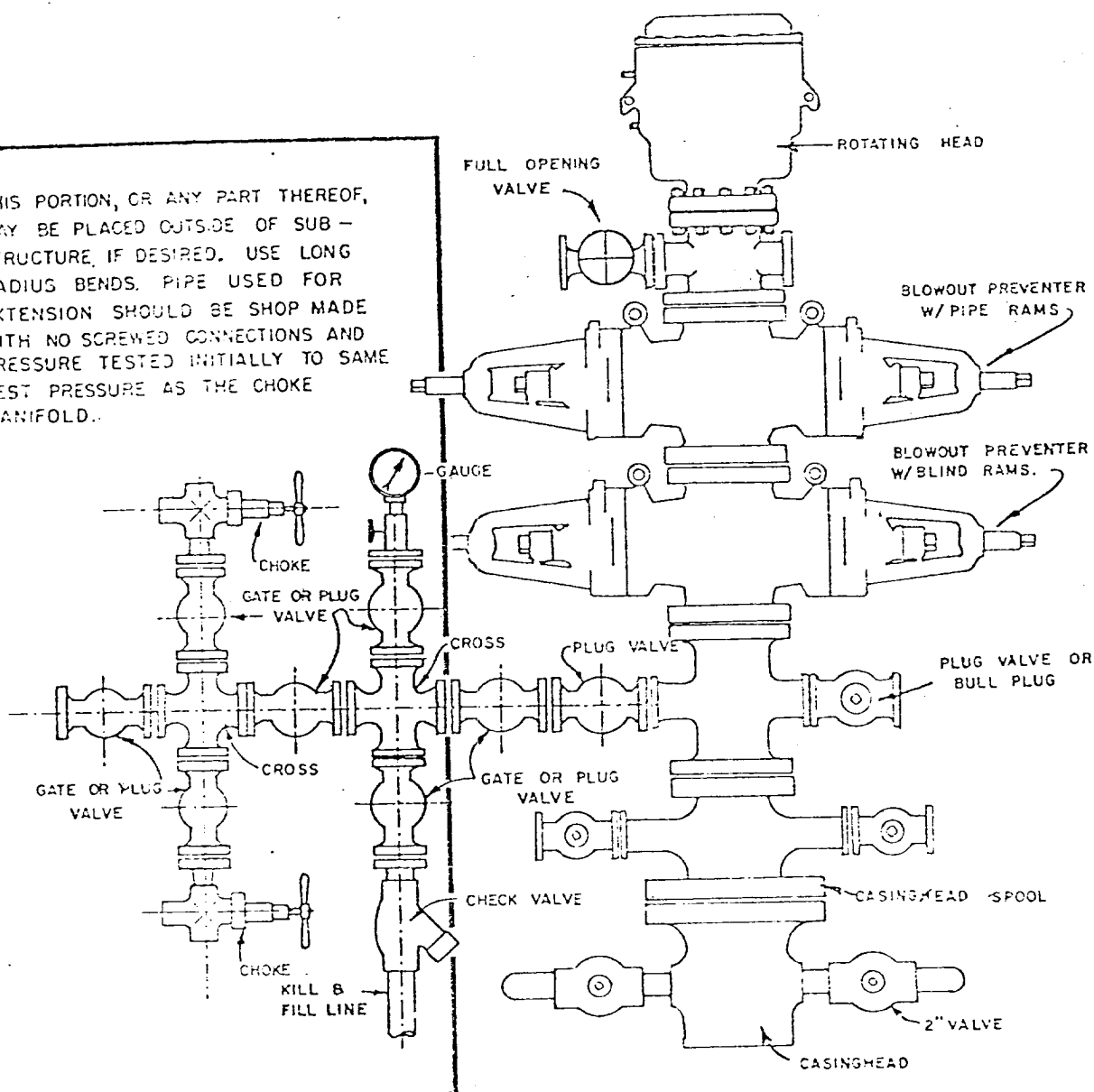


1. Blowout Preventers and Master Valve to be fluid operated, and all fittings must be in good condition.
2. Equipment through which bit must pass shall be as large as the inside diameter of the casing that is being drilled through.
3. Nipple above Blowout Preventer shall be same size or larger than BOP being drilled through.
4. All fittings to be flanged.
5. Omsco or comparable safety valve must be available on rig floor at all times with proper connection or sub. The I.D. of safety valve should be as great as I.D. of tool joints of drill pipe, or at least as great as I.D. of drill collars.

THIS PORTION, OR ANY PART THEREOF, MAY BE PLACED OUTSIDE OF SUB-STRUCTURE, IF DESIRED. USE LONG RADIUS BENDS. PIPE USED FOR EXTENSION SHOULD BE SHOP MADE WITH NO SCREWED CONNECTIONS AND PRESSURE TESTED INITIALLY TO SAME TEST PRESSURE AS THE CHOKE MANIFOLD.



## BLOWOUT PREVENTER HOOKUP

API Series # 900

EXHIBIT D-4

OCTOBER 16, 1969

Operation of BOP by closing both pipe and blind rams will be tested each trip or, on long bit runs, pipe rams will be closed once each 24 hours.