

UNITED STATES
DEPARTMENT OF THE INTERIOR
GEOLOGICAL SURVEY

SUNDRY NOTICES AND REPORTS ON WELLS

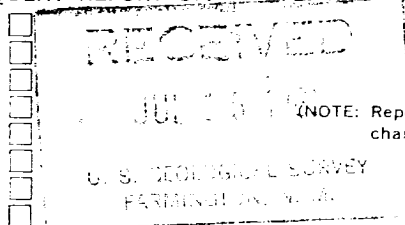
(Do not use this form for proposals to drill or to deepen or plug back to a different reservoir. Use Form 9-331-C for such proposals.)

1. oil ☐ well gas ☒ well other ☐
2. NAME OF OPERATOR
SUPRON ENERGY CORPORATION
3. ADDRESS OF OPERATOR
P.O. Box 808, Farmington, New Mexico 87401
4. LOCATION OF WELL (REPORT LOCATION CLEARLY. See space 17 below.)
AT SURFACE: 835 ft./N ; 1815 ft./W line
AT TOP PROD. INTERVAL: Same as above
AT TOTAL DEPTH: Same as above
16. CHECK APPROPRIATE BOX TO INDICATE NATURE OF NOTICE, REPORT, OR OTHER DATA

REQUEST FOR APPROVAL TO:

- TEST WATER SHUT-OFF ☐
FRACTURE TREAT ☐
SHOOT OR ACIDIZE ☐
REPAIR WELL ☐
PULL OR ALTER CASING ☐
MULTIPLE COMPLETE ☐
CHANGE ZONES ☐
ABANDON* ☐
(other) Ran 4 1/2" casing

SUBSEQUENT REPORT OF:



(NOTE: Report results of multiple completions or change on Form 9-330.)



5. LEASE
SF 078244
6. IF INDIAN, ALLOTTEE OR TRIBE NAME
7. UNIT AGREEMENT NAME
8. FARM OR LEASE NAME
Taliaferro
9. WELL NO.
24 F
10. FIELD OR WILDCAT NAME
Blanco Mesaverde-Basin Dakota
11. SEC., T., R., M., OR BLK. AND SURVEY OR AREA
Sec. 31, T-31N, R-12W, NMPM
12. COUNTY OR PARISH 13. STATE
San Juan New Mexico
14. API NO.
15. ELEVATIONS (SHOW DF, KDB, AND WD)
6010 R.K.B.

17. DESCRIBE PROPOSED OR COMPLETED OPERATIONS (Clearly state all pertinent details, and give pertinent dates, including estimated date of starting any proposed work. If well is directionally drilled, give subsurface locations and measured and true vertical depths for all markers and zones pertinent to this work.)*

1. Drilled 7-7/8" hole with mud to total depth of 7024 ft. R.K.B. Total depth was reached on 7-7-81.
 2. Ran 173 jts. of 4 1/2", 10.50# and 11.60# casing and set at 7024 ft. R.K.B. with float collar set at 7005 ft. R.K.B. Stage collars were set at 5007 and 2355 ft. R.K.B.
 3. Cemented first stage w/350 sacks of 50-50 POZ mix with 2% gel and 10% salt. Plug down at 3:15 p.m. 7-10-81. Cemented second stage with 350 sacks of 50-50 POZ mix with 4% gel and 6 lbs. of Gilsonite/sk and 50 sacks of class "B" with 2% calcium chloride. Plug down at 7:00 p.m. 7-10-81. Cemented third stage with 350 sacks of 65-35-12 with 12 1/2 lb. of Gilsonite per sack and 100 sacks of 50-50 POZ mix with 2% gel. Plug down at 8:15 p.m. 7-10-81.
 4. Ran temp. survey and found cement top at 300 ft. R.K.B.
- Subsurface Safety Valve: Manu. and Type _____ Set @ _____ Ft.

18. I hereby certify that the foregoing is true and correct

SIGNED Kenneth E. Roddy TITLE Production Supt. DATE July 13, 1981
Kenneth E. Roddy

(This space for Federal or State office use)

APPROVED BY _____
CONDITIONS OF APPROVAL, IF ANY:

TITLE _____

DATE _____

ACCEPTED FOR RECORD

JUL 16 1981

BY Dean Elliott
FARMINGTON DISTRICT

*See Instructions on Reverse Side

NMOCC