



STATE OF NEW MEXICO
ENERGY AND MINERALS DEPARTMENT
OIL CONSERVATION DIVISION
AZTEC DISTRICT OFFICE

1000 RIO BRAZOS ROAD
AZTEC, NEW MEXICO 87411
(505) 334-6178

OIL CONSERVATION DIVISION
BOX 2088
SANTA FE, NEW MEXICO 87501

DATE 11-10-81

Still pending 8-20-81

RE: Proposed MC _____
Proposed DHC _____
Proposed NSL ✓ _____
Proposed SWD _____
Proposed WFX _____
Proposed PMX _____

Refer to file of Santa Fe

Gentlemen:

I have examined the application dated Oct 23, 1981
for the W.H. Oil & Gas Inc. Liberty 2-31-1981
Operator Lease and Well No. Unit, S-T-R

and my recommendations are as follows:

11/10/81

Yours truly,

Jeff A. Edmister

B.O.A. Oil & Gas Company
3539 East 30th Street, Suite 108
Farmington, New Mexico
87401

Mr. Joe Ramey
New Mexico Oil Conservation Division
Post Office Box 2088
Santa Fe, New Mexico 87501

October 26, 1981

Dear Mr. Ramey:

This is a request for administrative approval for an unorthodox oil well location in the Verde Gallup Pool.


It is intended to locate the B.O.A. Oil & Gas Company's Ute Mountain "B" Well #21, Section 31, 31N-15W, at 1090' from the North line, and 2480' from the east line, San Juan County, New Mexico.

Extremely rough terrain in the form of steep cliffs and the sand was arroyo in this 40 acres makes it impossible to build an orthodox oil well location.

B.O.A. Oil & Gas operates all proration units offsetting the proposed unorthodox location.

Plats showing the proposed well location and the terrain of Section 31, along with an ownership plat, are attached.

Very Truly Yours,



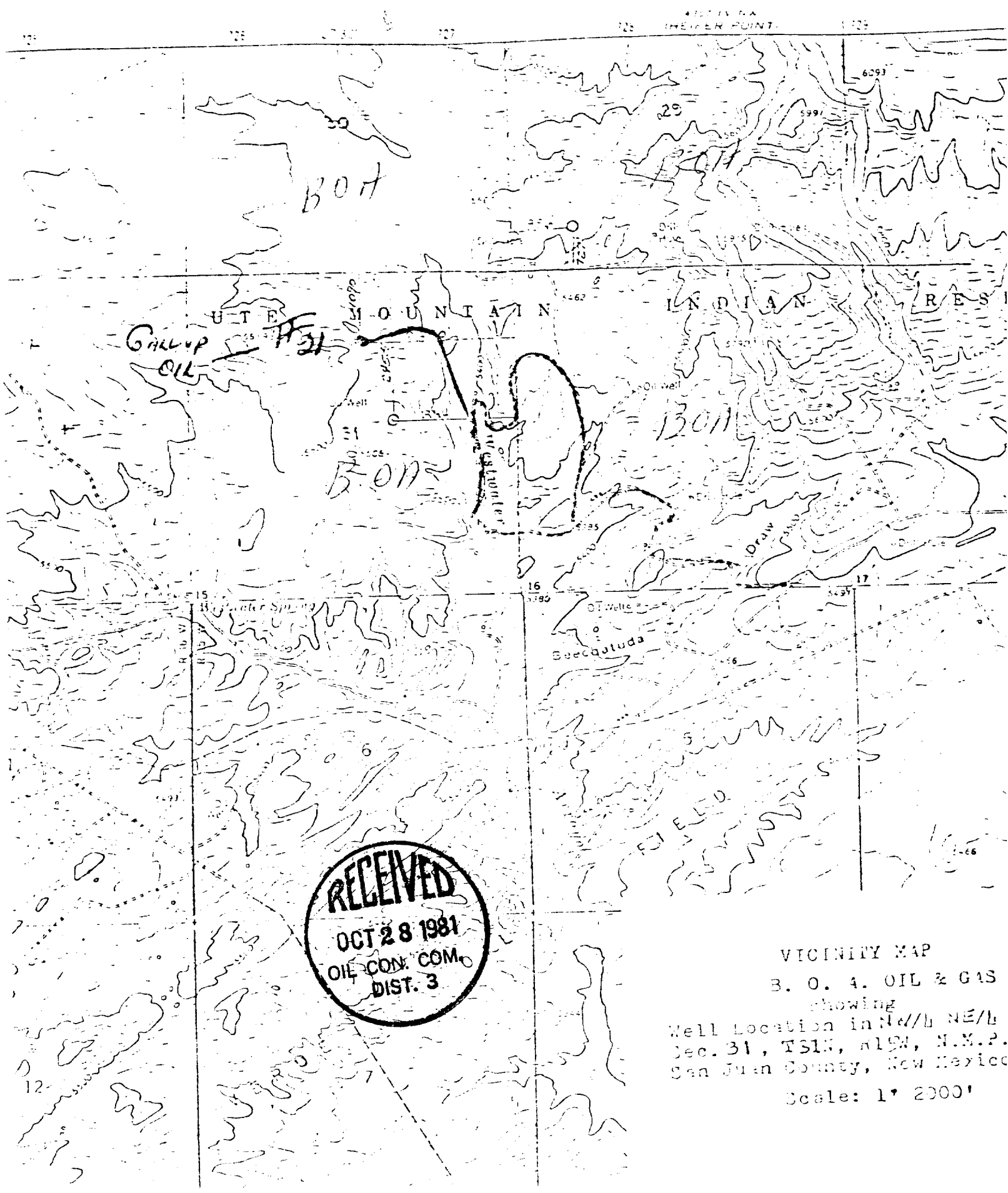
Ralph G. Abbott, General Partner
B.O.A. Oil & Gas Company

RGA/lr

Enc.(2)

Handwritten notes:
1. 10/28/81 - I have been in contact
with the O.C.C. & they will
approve the location of the well E





RECEIVED
OCT 28 1981
OIL CON. COM.
DIST. 3

VICINITY MAP
B. O. A. OIL & GAS
showing
Well Location in NE/4 NE/4
Sec. 31, T31N, R19W, N.M.P.
San Juan County, New Mexico
Scale: 1" = 2000'

NEW MEXICO OIL CONSERVATION COMMISSION
WELL LOCATION AND ACREAGE DEDICATION PLAT

Form O-102
Supersedes O-129
Effective 1-1-75

All measurements must be from the outer boundaries of the Section

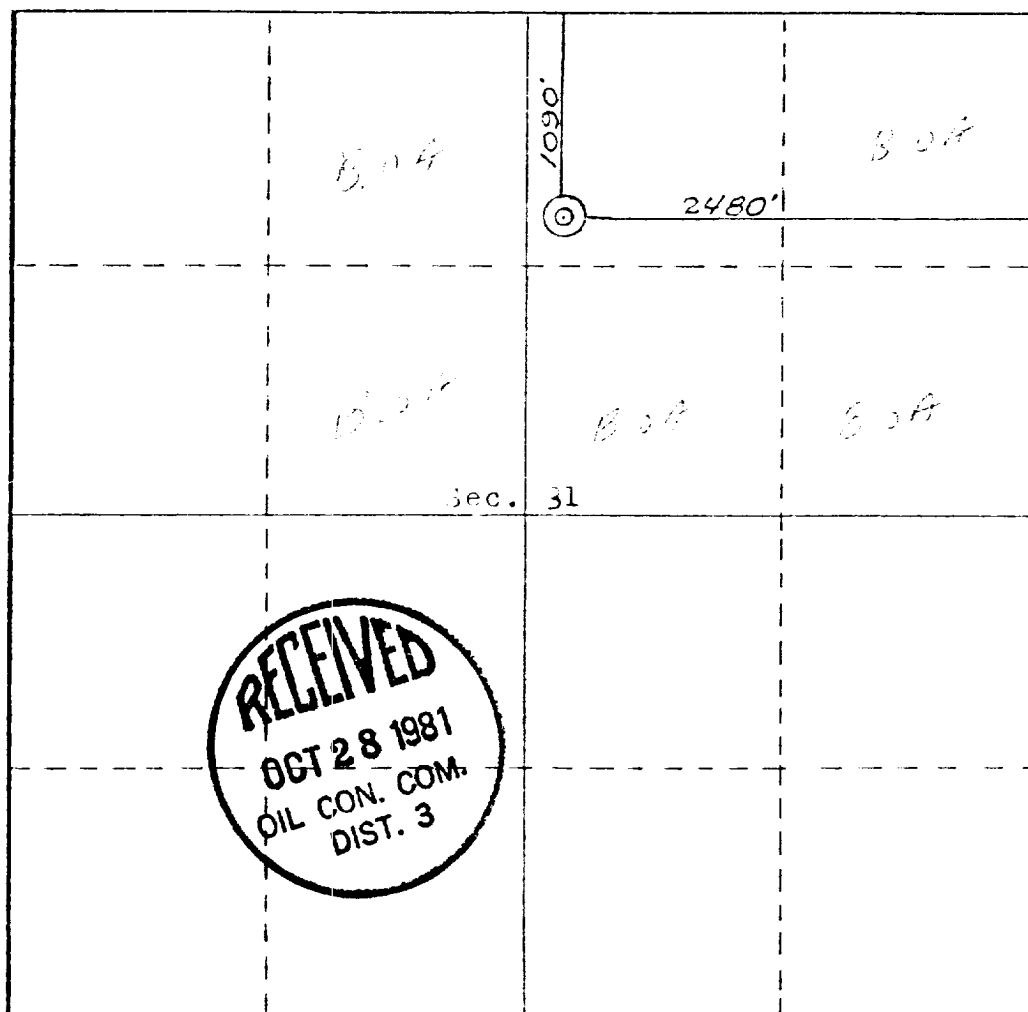
Operator B. O. A. OIL & GAS			Lease		Well No. 21
Unit Letter B	Section 31	Township 31 NORTH	Range 15 WEST	County SAN JUAN	
Actual Footage Location of Well: 1090 feet from the NORTH line and 2480 feet from the EAST line					
Ground Level Elev. 5433	Producing Formation Gallup		Pool Verde Gallup		Dedicated Acreage: 40 Acres

1. Outline the acreage dedicated to the subject well by colored pencil or hachure marks on the plat below.
2. If more than one lease is dedicated to the well, outline each and identify the ownership thereof (both as to working interest and royalty).
3. If more than one lease of different ownership is dedicated to the well, have the interests of all owners been consolidated by communitization, unitization, force-pooling, etc?

☐ Yes ☐ No If answer is "yes," type of consolidation _____

If answer is "no," list the owners and tract descriptions which have actually been consolidated. (Use reverse side of this form if necessary.) _____

No allowable will be assigned to the well until all interests have been consolidated (by communitization, unitization, forced-pooling, or otherwise) or until a non-standard unit, eliminating such interests, has been approved by the Commission.



CERTIFICATION

I hereby certify that the information contained herein is true and complete to the best of my knowledge and belief.

Ralph C. Abbott
Name

General Partner

Position

B.O.A. Oil & Gas Co.

Company

October 26, 1981

Date

I hereby certify that the well location shown on this plat was plotted from field notes of actual surveys made by me or under my supervision, and that the same is true and correct to the best of my knowledge and belief.

Curtis C. Stocking
REGISTERED LAND SURVEYOR
No. 1951
Professional Engineer
and Licensed Surveyor
Curtis C. Stocking
C. S. C.

Certificate No.

4930 NMLS

