

UNITED STATES  
DEPARTMENT OF THE INTERIOR  
GEOLOGICAL SURVEY

## APPLICATION FOR PERMIT TO DRILL, DEEPEN, OR PLUG BACK

## 1a. TYPE OF WORK

DRILL ☒DEEPEN ☐PLUG BACK ☐

## b. TYPE OF WELL

OIL  
WELL ☒GAS  
WELL ☐

OTHER

SINGLE  
ZONE ☒MULTIPLE  
ZONE ☐

## 2. NAME OF OPERATOR

Solar Petroleum, Inc.

## 3. ADDRESS OF OPERATOR

999 18th St., #1300, Denver, CO 80202

## 4. LOCATION OF WELL (Report location clearly and in accordance with any State regulations.)

At surface

At proposed prod. zone 2600' FNL &amp; 1287' FEL

## 14. DISTANCE IN MILES AND DIRECTION FROM NEAREST TOWN OR POST OFFICE

12 miles NE of Shiprock, NM

U. S. GEOLOGICAL SURVEY  
FARMINGTON, N. M.

## 15. DISTANCE FROM PROPOSED\*

LOCATION TO NEAREST  
PROPERTY OR LEASE LINE, FT.

(Also to nearest drig. unit line, if any)

3993'

33'

## 16. NO. OF ACRES IN LEASE

2560'

## 18. DISTANCE FROM PROPOSED LOCATION\*

TO NEAREST WELL, DRILLING, COMPLETED,  
OR APPLIED FOR, ON THIS LEASE, FT.

700'

930'

## 21. ELEVATIONS (Show whether DF, RT, GR, etc.)

5193' GR

## 23.

PROPOSED CASING AND CEMENTING PROGRAM

SIZE OF HOLE	SIZE OF CASING	WEIGHT PER FOOT	SETTING DEPTH	QUANTITY OF CEMENT
12-1/4"	8-5/8"	23#	90'	70 sx (84 cu. ft.)
7-7/8"	5-1/2"	15.5#	900'	125 sx (150 cu. ft.)

Drill 7-7/8" hole to just above Gallup sand, set 5-1/2" casing.  
Drill pay with clear brine, log and complete open hole.

IN ABOVE SPACE DESCRIBE PROPOSED PROGRAM: If proposal is to deepen or plug back, give data on present productive zone and proposed new productive zone. If proposal is to drill or deepen directionally, give pertinent data on subsurface locations and measured and true vertical depths. Give blowout preventer program, if any.

24.

SIGNED

TITLE

Agent

DATE May 20, 1983

(This space for Federal or State office use)

PERMIT NO.

APPROVAL DATE

APPROVED  
AS AMENDED

DATE

JUL 25 1983

APPROVED BY

TITLE

CONDITIONS OF APPROVAL, IF ANY:

Total 232 # 22 + 155

232 155

alt

111000

  
for Area Mgr.

## OIL CONSERVATION DIVISION

STATE OF NEW MEXICO  
OIL AND MINERALS DEPARTMENTP. O. BOX 2088  
SANTA FE, NEW MEXICO 87501Form C-107  
Revised 10-1-78

All distances must be from the outer boundaries of the Section.

Operator <b>SOLAR PETROLEUM, INCORPORATED</b>			Lease <b>NAVAJO TRIBE OF INDIANS #F#</b>		Well No. <b>165</b>
Unit Letter <b>H</b>	Section <b>9</b>	Township <b>31N</b>	Range <b>17W</b>	County <b>San Juan</b>	
Actual Footage Location of Well: <b>2600</b> feet from the <b>North</b> line and <b>1287</b> feet from the <b>East</b> line					
Ground Level Elev: <b>5193</b>	Producing Formation <b>Gallup</b>		Pool <b>Horseshoe Gallup</b>	Dedicated Acreage: <b>40</b> Acres	

1. Outline the acreage dedicated to the subject well by colored pencil or hatchure marks on the plat below.
2. If more than one lease is dedicated to the well, outline each and identify the ownership thereof (both as to working interest and royalty).
3. If more than one lease of different ownership is dedicated to the well, have the interests of all owners been consolidated by communitization, unitization, force-pooling, etc?

☐ Yes ☐ No If answer is "yes," type of consolidation \_\_\_\_\_

If answer is "no," list the owners and tract descriptions which have actually been consolidated. (Use reverse side of this form if necessary.) \_\_\_\_\_

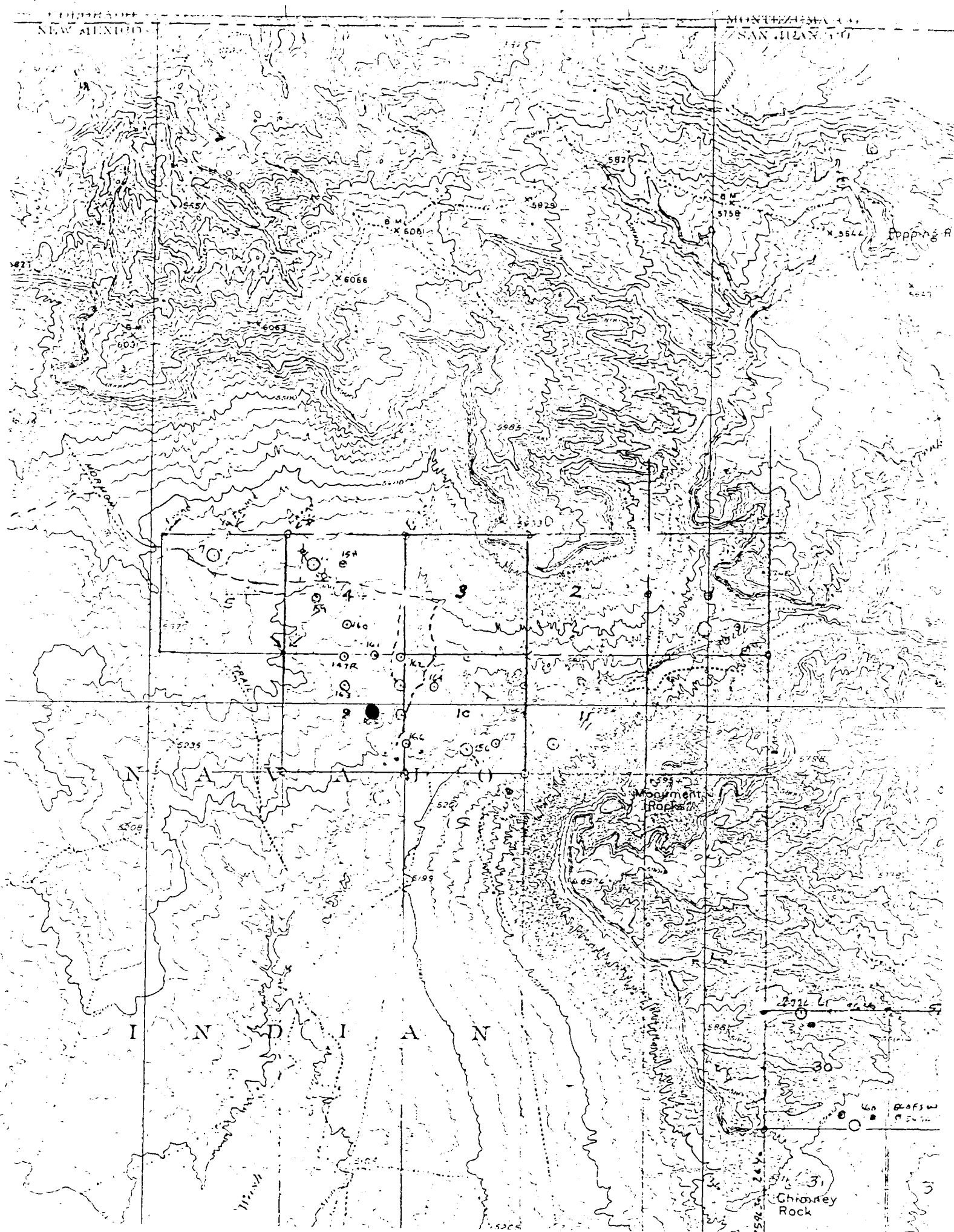
No allowable will be assigned to the well until all interests have been consolidated (by communitization, unitization, forced-pooling, or otherwise) or until a non-standard unit, eliminating such interests, has been approved by the Commission.

**RECEIVED**  
JUL 27 1983  
OIL CON. DIV.  
DIST. 3

Sec.		2600'
		1287'
9		
<b>RECEIVED</b> JUN 6 1983 U. S. GEOLOGICAL SURVEY FARMINGTON, N. M.		

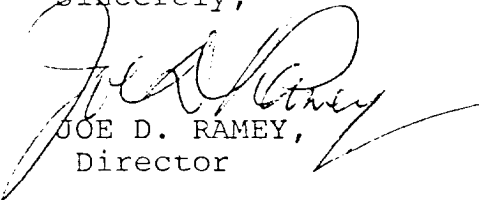
Scale: 1"=1000'

CERTIFICATION	
I hereby certify that the information contained herein is true and complete to the best of my knowledge and belief.	
Name	<i>Joe M. Hodge</i>
Position	Agent
Company	SOLAR PETROLEUM, INC.
Date	May 20, 1983
I hereby certify that the well location shown on this plat was plotted from field notes of actual surveys made by me or under my supervision, and that the same is true and correct to the best of my knowledge and belief.	
Date Surveyed	May 3, 1983
Registered Professional Engineer and Land Surveyor	<i>Fred B. Kerr Jr.</i> Fred B. Kerr Jr.
Certificate No.	3950



By authority granted me under the provisions of Rule 104 F of the Division Rules and Regulations, the above-described unorthodox locations are hereby approved.

Sincerely,

  
JOE D. RAMEY,  
Director

JDR/RLS/dr

cc: Oil Conservation Division - Aztec  
Oil & Gas Engineering Committee - Hobbs  
Minerals Management Service - Farmington

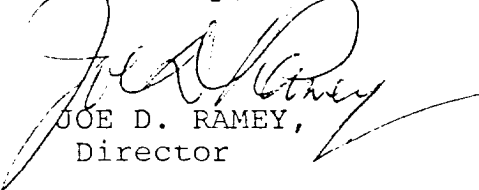
RECEIVED

JUN 23 1983

OIL CON. DIV.  
DIST. 3

By authority granted me under the provisions of Rule 104 F of the Division Rules and Regulations, the above-described unorthodox locations are hereby approved.

Sincerely,

  
JOE D. RAMEY,  
Director

JDR/RLS/dr

cc: Oil Conservation Division - Aztec  
Oil & Gas Engineering Committee - Hobbs  
Minerals Management Service - Farmington

RECEIVED

JUN 23 1983

OIL CON. DIV.  
DIST. 3



STATE OF NEW MEXICO  
ENERGY AND MINERALS DEPARTMENT

OIL CONSERVATION DIVISION  
AZTEC DISTRICT OFFICE

1000 RIO BRAZOS ROAD  
AZTEC, NEW MEXICO 87410  
(505) 334-6178

OIL CONSERVATION DIVISION  
BOX 2088  
SANTA FE, NEW MEXICO 87501

DATE 6-9-83

RE: Proposed MC \_\_\_\_\_  
Proposed DHC \_\_\_\_\_  
Proposed NSL ☒ \_\_\_\_\_  
Proposed SWD \_\_\_\_\_  
Proposed WFX \_\_\_\_\_  
Proposed PHX \_\_\_\_\_

Gentlemen:

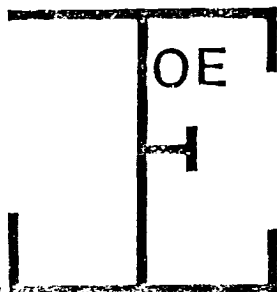
I have examined the application dated 6-6-83  
for the Solar Petroleum Corp Navajo Tribe of Indians F secs 4, 9, 10, 31, 11-17  
Operator Lease and Well No. Unit, 'S-T-R

and my recommendations are as follows:

Approve wells 147R, 158, 159, 160, 161, 162, 163, 164, 165, 166,  
and 167

Yours truly,

Jeff A. Edminster  
JAE



200 West 25th Street  
Farmington, New Mexico 87401  
(505) 327-9267  
(505) 325-1873 (Car 2893)

ELLEDGE

OIL and GAS PROPERTY MANAGEMENT

Mr. R. L. Stamets  
State of New Mexico  
Oil Conservation Division  
P. O. Box 2088  
Santa Fe, NM 87501

**RECEIVED**

JUN 6 1983

**OIL CON. DIV.]**  
**DIST. 3**

Re: Non-Standard Locations in the  
Horseshoe Gallup Pool  
Sections 4, 9, and 10, T31N, R17W  
San Juan County, New Mexico

Dear Mr. Stamets:

Solar Petroleum, Inc. proposes to drill eleven non-standard oil wells to the Gallup sand on the Navajo Tribe of Indians Reservation as shown on the enclosed plat and listed on the enclosed application.

These proposed non-standard locations will maximize oil production and are located within a waterflood licensed by the State of New Mexico.

Yours truly,

Joe Elledge  
Agent - Solar Petroleum, Inc.

JE:en

Attachments (2)

cc: Dave Cushman, Solar Petroleum, Inc.  
Jeff Edmister, Oil Conservation Division

## OIL CONSERVATION DIVISION

STATE OF NEW MEXICO  
OIL AND MINERALS DEPARTMENTP. O. BOX 2088  
SANTA FE, NEW MEXICO 87501Form C-107  
Revised 10-1-78

All distances must be from the outer boundaries of the Section.

Operator <b>SOLAR PETROLEUM, INCORPORATED</b>			Lease <b>NAVAJO TRIBE OF INDIANS "F"</b>		Well No. <b>165</b>
Unit Letter <b>H</b>	Section <b>9</b>	Township <b>31N</b>	Range <b>17W</b>	County <b>San Juan</b>	
Actual Footage Location of Well:					
2600 feet from the North line and		1287 feet from the East line			
Ground Level Elev. <b>5193</b>	Producing Formation <b>Gallup</b>	Pool <b>Horseshoe Gallup</b>		Dedicated Acreage: <b>40</b> Acres	

1. Outline the acreage dedicated to the subject well by colored pencil or hatchure marks on the plat below.
2. If more than one lease is dedicated to the well, outline each and identify the ownership thereof (both as to working interest and royalty).
3. If more than one lease of different ownership is dedicated to the well, have the interests of all owners been consolidated by communitization, unitization, force-pooling, etc?

☐ Yes ☐ No If answer is "yes," type of consolidation \_\_\_\_\_

If answer is "no," list the owners and tract descriptions which have actually been consolidated. (Use reverse side of this form if necessary.) \_\_\_\_\_

No allowable will be assigned to the well until all interests have been consolidated (by communitization, unitization, forced-pooling, or otherwise) or until a non-standard unit, eliminating such interests, has been approved by the Commission.

		<p style="text-align: center;">2600'</p>	
		<p style="text-align: center;">1287'</p>	
<p style="text-align: center;">Sec. 9</p>		<p style="text-align: center;">1287'</p>	
		<p style="text-align: center;">2600'</p>	

Scale: 1"=1000'

## CERTIFICATION

I hereby certify that the information contained herein is true and complete to the best of my knowledge and belief.

Name *John M. Wadsworth*  
 Position Agent  
 Company SOLAR PETROLEUM, INC.

Date May 20, 1983

I hereby certify that the well location shown on this plat was plotted from field notes of actual surveys made by me or under my supervision, and that the same is true and correct to the best of my knowledge and belief.

Date Surveyed May 3, 1983

Registered Professional Engineer and Land Surveyor

*Fred E. Kerr Jr.*  
 Fred E. Kerr Jr.

Certificate No. 3950