

All distances must be from the outer boundaries of the Section.

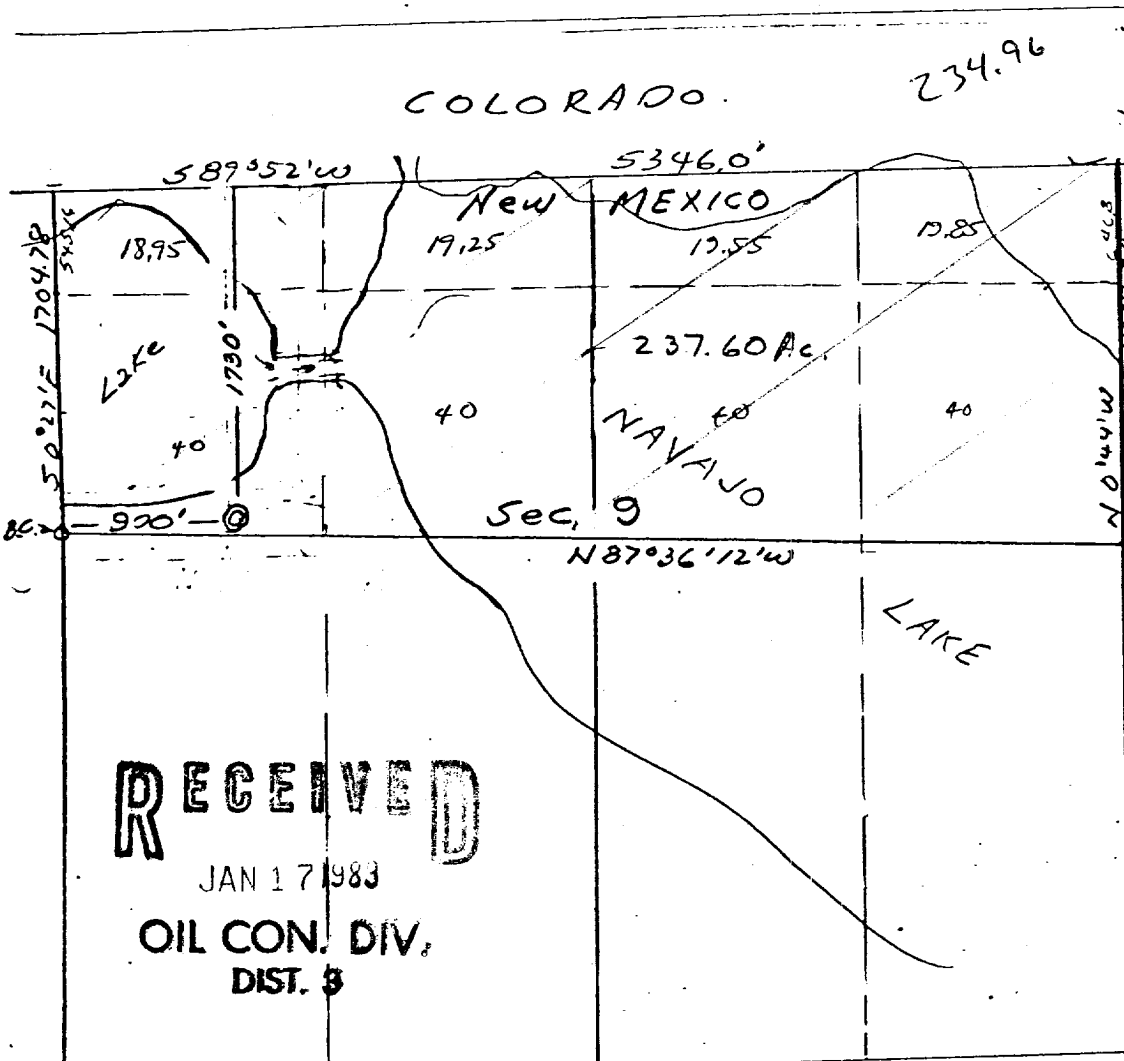
LEASE NO. 10101			Lease <b>SOVEREIGN 32-6</b>		Well No. <b>NO. 1</b>
SOVEREIGN OIL CO.					
Unit Letter <b>E</b>	Section <b>9</b>	Township <b>32 NORTH</b>	Range <b>6 WEST</b>	County <b>SAN JUAN COUNTY</b>	
Actual Postage Location of Well:					
<b>1730</b> feet from the <b>NORTH</b>		line and <b>900</b> feet from the <b>WEST</b>		line	
Ground Level Elev. <b>6157</b>	Producing Formation <b>PICTURED CLIFFS</b>		Pool <b>Wildcat</b>	Dedicated Acreage <b>237.60</b> Acres	

1. Outline the acreage dedicated to the subject well by colored pencil or hatchure marks on the plat below.
2. If more than one lease is dedicated to the well, outline each and identify the ownership thereof (both as to working interest and royalty).
3. If more than one lease of different ownership is dedicated to the well, have the interests of all owners been consolidated by communitization, unitization, force-pooling, etc?

☒ Yes ☒ No If answer is "yes," type of consolidation **UNITIZATION**

If answer is "no," list the owners and tract descriptions which have actually been consolidated. (Use reverse side of this form if necessary.)

No allowable will be assigned to the well until all interests have been consolidated (by communitization, unitization, forced-pooling, or otherwise) or until a non-standard unit, eliminating such interests, has been approved by the Division.

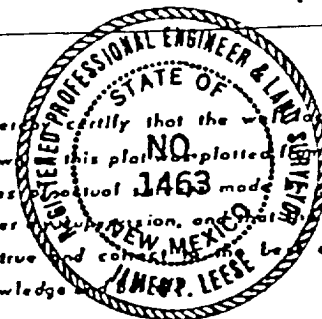


# CERTIFICATION

I hereby certify that the information contained herein is true and complete to the best of my knowledge and belief.

**MERLYN L. RIDLEN**  
Name  
**ENGINEER**  
Position  
**SOVEREIGN OIL COMPANY**  
Company  
**JANUARY 17, 1983**  
Date

I hereby certify that the well location shown on this plat is plotted in the field notes of actual 1463 made by me or under my supervision, and that the same is true and correct to the best of my knowledge.



**January 6, 1983**  
Date Surveyed

**James P. Leese**

Registered Professional Engineer and/or Land Surveyor

**James P. Leese**  
Certificate No. **1463**