

30-045-25992

Form 3160-3
(November 1983)
(formerly 9-331C)

SUBMIT IN TRIPLICATE*
(Other instructions on reverse side)

Form approved.
Budget Bureau No. 1004-0136
Expires August 31, 1985

UNITED STATES
DEPARTMENT OF THE INTERIOR
BUREAU OF LAND MANAGEMENT

APPLICATION FOR PERMIT TO DRILL, DEEPEN, OR PLUG BACK

1a. TYPE OF WORK
DRILL DEEPEN PLUG BACK

b. TYPE OF WELL
OIL WELL GAS WELL OTHER
SINGLE ZONE MULTIPLE ZONE

2. NAME OF OPERATOR
Southland Royalty Company

3. ADDRESS OF OPERATOR
P. O. Drawer 570, Farmington, New Mexico 87499

4. LOCATION OF WELL (Report location clearly and in accordance with any State requirements.)
At surface: 1660' FSL & 835' FWL
At proposed prod. zone: MAY 23 1984

14. DISTANCE IN MILES AND DIRECTION FROM NEAREST TOWN OR POST OFFICE
6 Miles South of Ignacio, Colorado

15. DISTANCE FROM PROPOSED LOCATION TO NEAREST PROPERTY OR LEASE LINE, FT. (Also to nearest drig. unit line, if any)
835'

18. DISTANCE FROM PROPOSED LOCATION TO NEAREST WELL, DRILLING, COMPLETED, OR APPLIED FOR, ON THIS LEASE, FT.
700'

16. NO. OF ACRES IN LEASE
421.32

19. PROPOSED DEPTH
4050'

17. NO. OF ACRES ASSIGNED TO THIS WELL
150.72

20. ROTARY OR CABLE TOOLS
Rotary

21. ELEVATIONS (Show whether DF, RT, GR, etc.)
7040' GL

22. APPROX. DATE WORK WILL START*
June 15, 1984

23. DRILLING OPERATIONS AUTHORIZED ARE SUBJECT TO COMPLIANCE WITH ATTACHED "GENERAL REQUIREMENTS" AND CEMENTING PROGRAM. This action is subject to administrative appeal pursuant to 30 CFR 290.

SIZE OF HOLE	SIZE OF CASING	WEIGHT PER FOOT	SETTING DEPTH	QUANTITY OF CEMENT
12-1/4"	New 8-5/8"	24#, K-55	300'	290 cu.ft. (Circulate to surface)
7-7/8"	*		3700'	
6-3/4"	New 2-7/8"	6.5#, J-55	3700'-4050'	651 cu.ft. (Cover Ojo Alamo)

Surface formation is San Jose.
 Top of Ojo Alamo sand is at 2455'.
 Top of Pictured Cliffs sand is at 3705'.
 Fresh water mud will be used to drill from surface to total depth.
 It is anticipated that an IES will be run from total depth to surface casing and a GR-CDL will be run to total depth.
 No abnormal pressures or poisonous gases are anticipated in this well.
 It is expected that this well will be drilled before July 1, 1984.
 This depends on time required for approvals, rig availability and the weather.
 Gas is not dedicated.

IN ABOVE SPACE DESCRIBE PROPOSED PROGRAM: If proposal is to deepen or plug back, give data on present productive zone and proposed new productive zone. If proposal is to drill or deepen directionally, give pertinent data on subsurface locations and measured and true vertical depths. Give blowout preventer program, if any.

SIGNED: *[Signature]* TITLE: District Engineer
 (This space for Federal or State office use)
 PERMIT NO. _____ APPROVAL DATE _____
 APPROVED BY: *[Signature]* TITLE: _____
 CONDITIONS OF APPROVAL, IF ANY: _____

RECEIVED
 JUN 01 1984
 OIL CON. DIV.
 DIST. 3

APPROVED MAY 23 1984
 AS AMENDED
 MAY 30 1984
John Mucker
 AREA MANAGER
 FARMINGTON RESOURCE AREA

NMOCC
*See Instructions On Reverse Side

Title 18 U.S.C. Section 1001, makes it a crime for any person knowingly and willfully to make to an department or agency of the United States any false, fictitious or fraudulent statements or representations as to any matter within its jurisdiction.

NEW MEXICO OIL CONSERVATION COMMISSION
WELL LOCATION AND ACREAGE DEDICATION PLAT

Form C-102
Supersedes C-128
Effective 1-1-65

All distances must be from the outer boundaries of the Section.

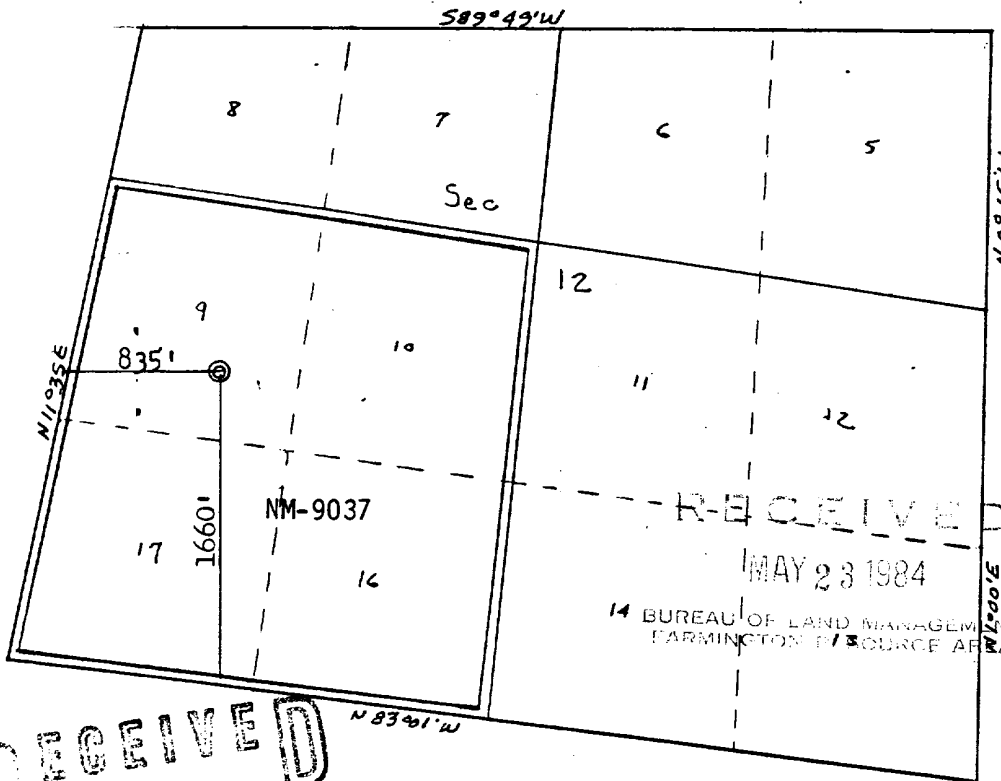
Operator SOUTHLAND ROYALTY COMPANY			Lease REESE MESA		Well No. 8
Unit Letter L (Lot 9)	Section 12	Township 32N	Range 8W	County San Juan	
Actual Footage Location of Well: 1660 feet from the South line and 835 feet from the West line					
Ground Level Elev: 7040' GL	Producing Formation Pictured Cliffs		Pool Albino	Dedicated Acreage: 150.72 Acres	

1. Outline the acreage dedicated to the subject well by colored pencil or hachure marks on the plat below.
2. If more than one lease is dedicated to the well, outline each and identify the ownership thereof (both as to working interest and royalty).
3. If more than one lease of different ownership is dedicated to the well, have the interests of all owners been consolidated by communitization, unitization, force-pooling, etc?

Yes No If answer is "yes," type of consolidation _____

If answer is "no," list the owners and tract descriptions which have actually been consolidated. (Use reverse side of this form if necessary.) _____

No allowable will be assigned to the well until all interests have been consolidated (by communitization, unitization, forced-pooling, or otherwise) or until a non-standard unit, eliminating such interests, has been approved by the Commission.



CERTIFICATION

I hereby certify that the information contained herein is true and complete to the best of my knowledge and belief.

[Signature]

Name C. Terry Hobbs
Position District Engineer
Company Southland Royalty Company
Date May 22, 1984

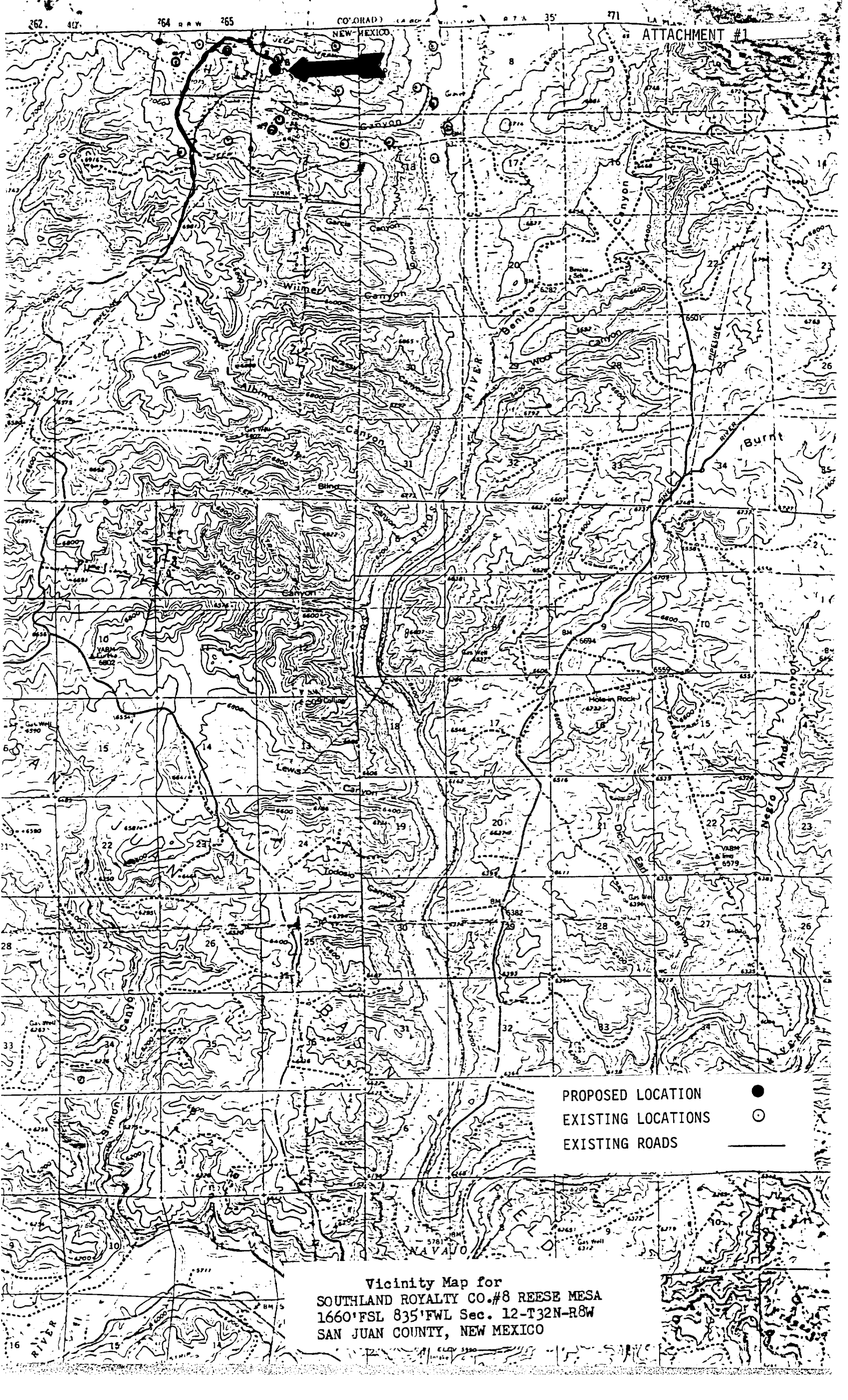
I hereby certify that the well location shown on this plat was plotted from field notes of actual surveys made by me or under my supervision, and that the same is true and correct to the best of my knowledge and belief.

Date Surveyed Re-issue November 17, 1983
Registered Professional Engineer and Land Surveyor

Certificate No.

RECEIVED
JUN 01 1984
OIL CON. DIV.
DIST. 3

RECEIVED
MAY 23 1984
BUREAU OF LAND MANAGEMENT
FARMINGTON DISTRICT OFFICE



ATTACHMENT #1

PROPOSED LOCATION ●
 EXISTING LOCATIONS ○
 EXISTING ROADS ———

Vicinity Map for
 SOUTHLAND ROYALTY CO.#8 REESE MESA
 1660' FSL 835' FWL Sec. 12-T32N-R8W
 SAN JUAN COUNTY, NEW MEXICO