

State of New Mexico  
Energy, Minerals and Natural Resources Department  
Oil Conservation Division

Sundry Notices and Reports on Wells

1. Type of Well  
GAS

2. Name of Operator  
**MERIDIAN OIL**

3. Address & Phone No. of Operator  
PO Box 4289, Farmington, NM 87499 (505) 326-9700

4. Location of Well, Footage, Sec., T, R, M  
1175' FSL, 1470' FEL, Sec. 27, T-31-N, R-11-W, NMPM, San Juan County

API # (assigned by OCD)  
30-45-26865

5. Lease Number  
Fee

6. State Oil & Gas Lease #

7. Lease Name/Unit Name  
Calloway

8. Well No.  
1A

9. Pool Name or Wildcat  
Blanco Mesaverde

10. Elevation: 5683 GR

Type of Submission

☒ Notice of Intent  
☐ Subsequent Report  
☐ Final Abandonment

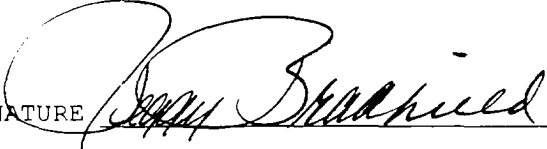
Type of Action

☐ Abandonment  
☐ Recompletion  
☐ Plugging Back  
☐ Casing Repair  
☐ Altering Casing  
☒ Other - Pay add  
☐ Change of Plans  
☐ New Construction  
☐ Non-Routine Fracturing  
☐ Water Shut off  
☐ Conversion to Injection

13. Describe Proposed or Completed Operations

It is intended to add pay the producing Mesaverde formation of the subject well according to the attached procedure and wellbore diagram.

**RECEIVED**  
DEC - 6 1995  
**OIL CON. DIV.**  
DIST. 3

SIGNATURE  (TJM4) Regulatory Administrator December 4, 1995

(This space for State Use)

Approved by ORIGINAL SIGNED BY ERNIE BUSCH Title DEPUTY OIL & GAS INSPECTOR, DIST. #3 Date DEC - 6 1995

**Calloway #1A - Mesaverde**  
Menefee / Cliffhouse Payadd  
Lat-Long by TDG: 36.865768 - 107.974060  
SE/4 Section 27, T31N-R11W  
October 4, 1995

1. Hold safety meeting. MIRU. Comply with all MOI, BLM and NMOCD rules and regulations. Install 13 frac tanks and 1x400 bbl rig tank. Fill each frac tank with 5#'s of biocide and filtered (25 micron) 1% KCl water.
2. Obtain and record all wellhead pressures. ND WH, NU BOP. TOO H w/ 2-3/8" tubing set at 4856'. Replace bad tubing as necessary.
3. PU 7" (20#) casing scraper, TIH and run casing scraper to 2470'. TOH.
5. TIH with 2-3/8" tubing, 4-1/2" (10.5#) casing scraper and 3-7/8" bit. CO to PBTD of 4976'. TOH.
6. TIH w/ 4-1/2" CIBP and set CIBP @ 4250'. Load hole w/ 1% KCL water. Pressure test csg to 750#. TOH.
7. RU wireline and run CBL-GR-CCL from  $\pm$  4250' to TOC in 7" casing (run CBL to find TOC in 4-1/2" liner and 7" casing).
8. Perf 2 SQ holes 50' above the TOC. TIH w/ 2-3/8" tbg. and fullbore pkr. Set pkr 100' above the perf holes. Squeeze the perf holes w/ 100% excess cmt w/ the BH valve open at surface. Circ 5 bbls of good cmt out of the bradenhead valve and then shut in valve and squeeze remaining cmt away. Over displace the cmt out of the 2-3/8" tbg by 2 bbls. Hold pressure on cmt for 4 hrs then open at surface and check for flow. Shut well in until flow ceases. TOH w/ packer.
9. WOC for 12 hrs then drill out the cmt. Run a CBL to locate TOC, if cmt was not circulated. Pressure test the sqz holes to 750#. Spot Menefee/Cliffhouse interval (4200' -  $\pm$  3750') w/ 300 gallons of inhibited 15% HCL acid. TOH.
10. Perforate the Menefee/Cliffhouse interval top down using 3-1/8" HSC guns with 12 gram charges and 0.31" diameter holes. Inspect guns to ensure all perforations fired. RD wireline. Perforation are to be shot at 3792', 3814', 3875', 3882', 3888', 3896', 3922', 3928', 3958', 3968', 3993', 4001', 4018', 4034', 4044', 4051', 4060', 4070', 4078', 4104', 4162', 4184', 4192'. A total of 23 shots
11. TIH w/ 4-1/2" fullbore packer,  $\pm$  200' of 2-3/8" tubing and the remaining 2-7/8" N-80 frac string. Set packer @  $\pm$  4240'. Load hole w/ water and pressure test casing and CIBP to 3800 psi. Release packer, PUH to  $\pm$  150' above top perforation and reset packer.
12. **Maximum allowable treating pressure is 3800 psi during acid job.** Pump 2000 gallons of 15% HCL acid @ 8 Bls/min dropping 46 - 7/8" diameter RCN ball sealers spaced evenly throughout the job. Release packer, TIH and knock balls off. TOO H to  $\pm$  2400' and reset packer.
13. Hold safety meeting. **Maximum allowable surface treating pressure is 6000 psi @ 30 Bbls/min.** If rate is reduced, the maximum pressure will be lower. (See stimulation schedule for maximum pressures for various rates.)
14. Pressure test surface lines to 7000 psi. (1000 psi over maximum treating pressure but less than the working pressure of the lines.) Fracture stimulate the Menefee/Cliffhouse interval @ 40 BPM using 30# linear gel and 167,500 lbs of sand tagged w/ Iridium. (Final stimulation procedure will

Calloway #1A  
Mesaverde Payadd  
October 4, 1995

be attached after reviewing logs.) Do not over displace during flush. Shut in well immediately after completion of the stimulation until pressure falls to zero.

15. Release packer and TOH laying down frac string.
16. TIH w/ 3-7/8" bit and drill up CIBP set @ 4250'. CO to PBTD (4976'). PU above the Mesaverde perforations and flow the well naturally, making short trips for clean up when necessary. Obtain pitot gauge for Mesaverde after clean up.
17. When sand has diminished, TOH.
18. RU wireline company. Run After Frac GR from 4400' to top of tracer activity.
19. TIH with one joint of 2-3/8", 4.7#, J-55 tubing w/ expendable check, an F-nipple, then the remaining 2-3/8" production tubing. Land tubing near bottom Mesaverde perforation (4876').
20. ND BOP's, NU WH. Pump off expendable check. Obtain final pitot. RD and MOL. Return well to production.

Approval:

\_\_\_\_\_  
Drilling Superintendent

Approval:

*Ronald P. Fitch* 11-2-95  
\_\_\_\_\_  
Northwest Basin Team Leader

**Contacts:**

Engineer - Todd Mushovic  
Office - (326-9584)  
Home - (324-0692)  
Pager - (324-7291)

or

Mary Ellen Lutey  
Office - (599-4052)  
Home - (325-9387)  
Pager - (324-2671)

Frac Consultant - Mark Byars

Pager - (327-8470)  
Mobile - (320-0349)  
Home - (327-0096)

or

Mike Martinez  
Pager - (599-7429)  
Mobile - (860-7518)  
Home - (326-4861)

## Pertinent Data Sheet - CALLOWAY #1A

**Location:** SW/4 SE/4, Section 27, T31N, R11W, 1175' FSL, 1470' FEL,  
Lat. 36.865768, Long. 107.974060 by TDG  
San Juan, NM

**Field:** Blanco Mesaverde

**Elevation:** 5683' GR  
**KB:** 5695'

**TD:** 5109'  
**PBTD:** 4976'

**Spud Date:** 08-11-88

**Completed:** 09-18-88

**DP No:** 3244A

**Prop. No:** 071060300

**Fed. No:** FEE

### **Casing/Liner Record:**

<u>Hole Size</u>	<u>Csg Size</u>	<u>Wt. &amp; Grade</u>	<u>Depth Set</u>	<u>Cement</u>	<u>Top/Cement</u>
12 1/4"	9 5/8"	32.3# H-40	231'	150 sx	to surface
8 3/4"	7"	20# K-55	2630'	350 sx	TOC 950' (CBL)
	4 1/2" Liner	10.5# J-55	2470'-5000'	330 sx	TOC 3060' (CBL)

Liner Hanger @ 2470', 15' marker jt @ 3848', float collar @ 4982'

**Tubing Record:** 2 3/8" 4.7# J-55 tubing set at 4856'. Seating Nipple set at 4824'.

### **Formation Tops:**

Ojo Alamo:	722'	Upper Cliff House:	3790'
Kirtland:	787'	Cliff House:	3872'
Fruitland:	1940'	Menefee:	4086'
Pictured Cliffs:	2282'	Point Lookout:	4532'
		Lower Point Lookout:	4644'

**Logging Record:** ES, GR, FDC, CNL, NGT, CBL, TEMP. SURVEY

**Stimulation:**

- Perfed Upper Point Lookout 4266'-4462' w/47,800# of sand and 78,000 gallons of water.
- Perfed Point Lookout 4536'-4698' w/84,000# of sand and 142,810 gallons of water.
- Perfed Lower Point Lookout 4751'-4876' w/34,000# of sand and 61,938 gallons of water.

Perf two squeeze holes @ 840'. Squeezed with 100 sacks Class "B" with 3% CaCl2.  
Test to 1200#. Did not circulate cement.

# CALLOWAY #1A

BLANCO MESAVERDE

AS OF 9/18/95

1175' FSL, 1470' FEL

SEC 27, T31N, R11W, SAN JUAN COUNTY, NM

SPUD 8/11/88  
COMPLETED 9/18/88  
ELEVATION 5683' GR  
KB 5695'

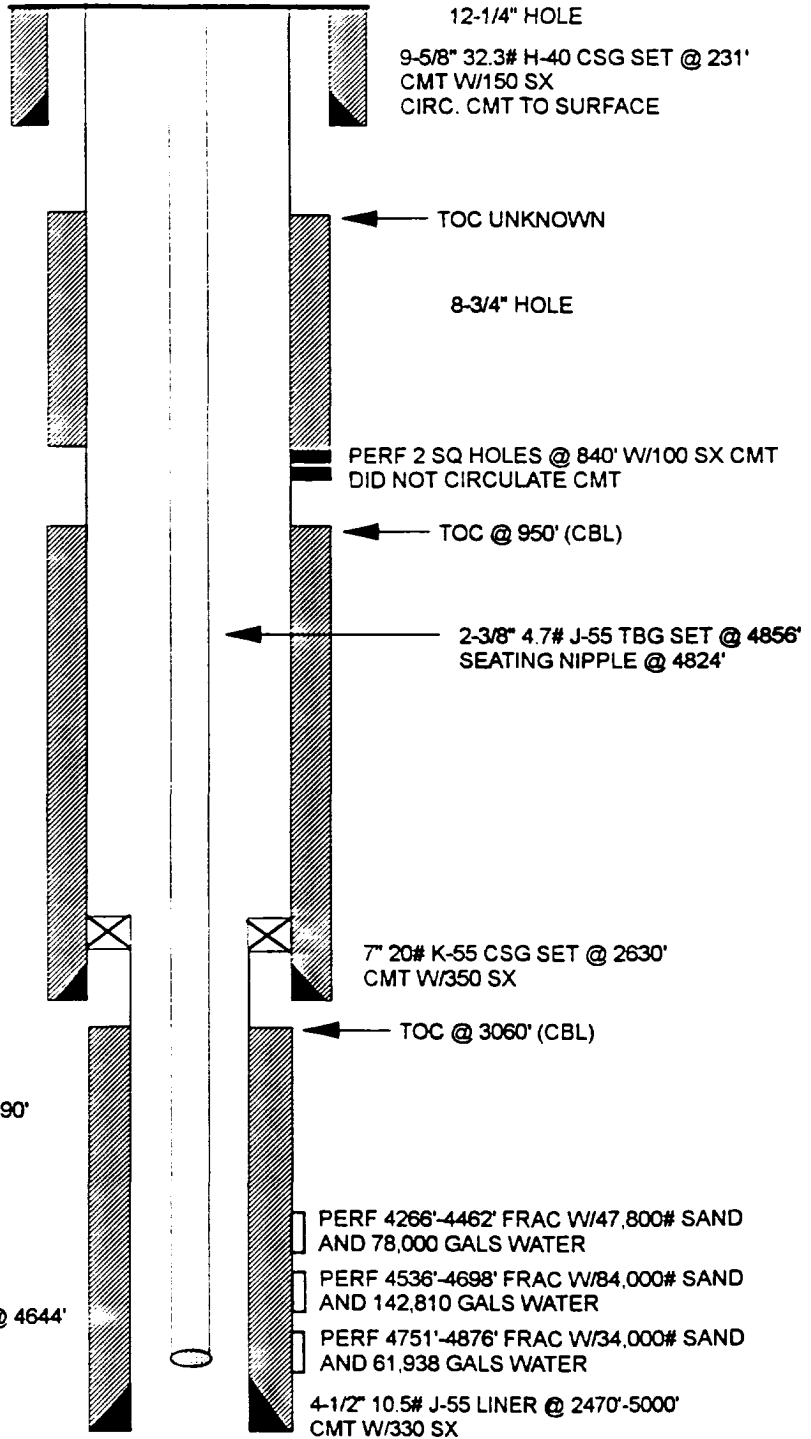
OJO ALAMO @ 722'  
KIRTLAND @ 787'

FRUITLAND @ 1940'

PICTURED CLIFFS @ 2282'

UPPER CLIFF HOUSE @ 3790'  
CLIFF HOUSE @ 3872'  
MENELEE @ 4086'

POINT LOOKOUT @ 4532'  
LOWER POINT LOOKOUT @ 4644'



TD 5109'  
PBTD 4976'