

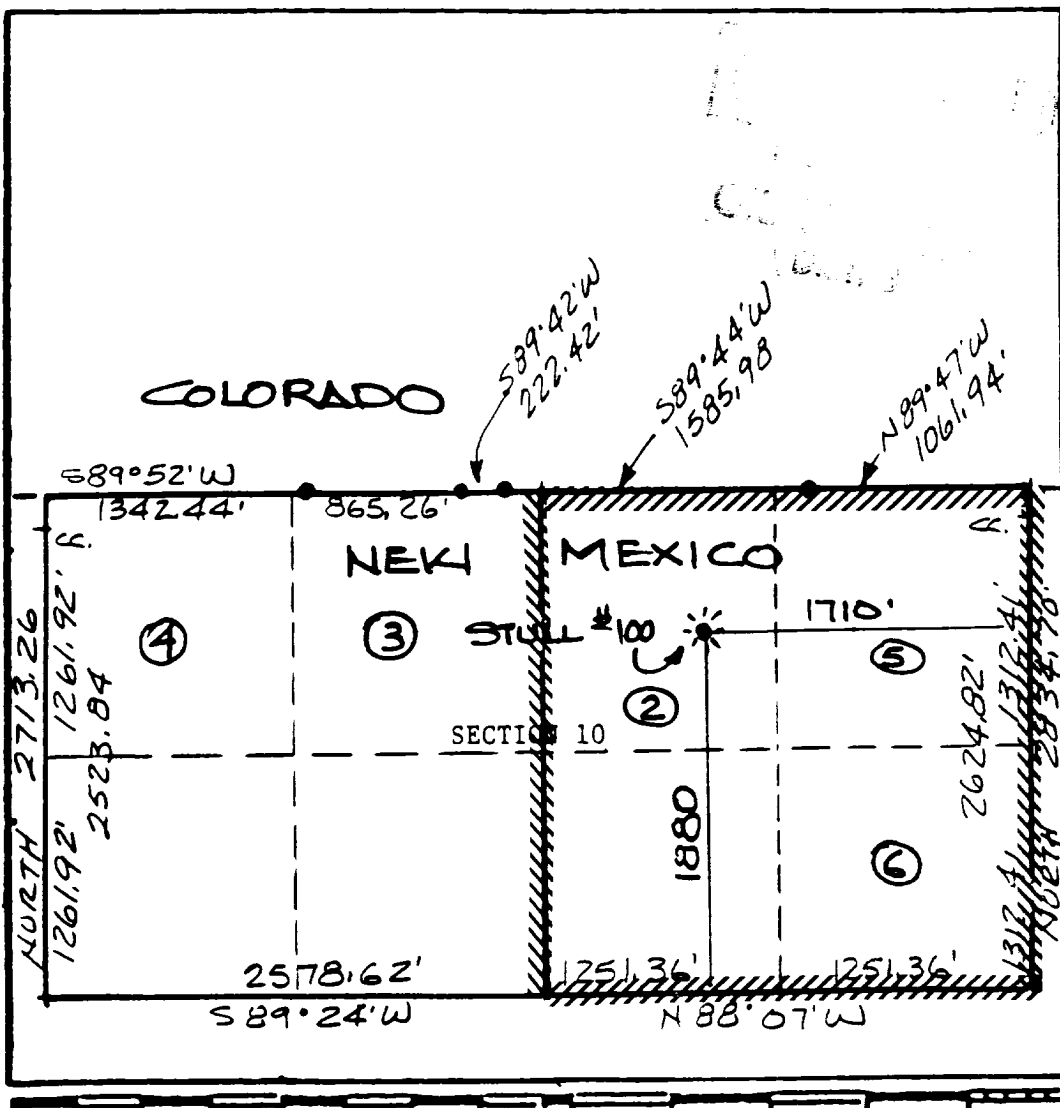
11-24 0-104 for R21-

Form C-100  
Supersedes C-  
Effective 1-1-6

Operator MERIDIAN OIL INC.		Lease STULL (Fee)		Well No. 100
Unit Letter A J	Section 10	Township 32 NORTH	Range 10 WEST	County SAN JUAN
Actual Footage Location of Wells 1880 feet from the SOUTH line and 1710 feet from the EAST line				
Ground Level Elev. 5943	Producing Formation Fruitland Coal	Pool Undesignated		Dedicated Acreage 160 Acres

- ☐ Yes   ☐ No   If answer is "yes," type of consolidation \_\_\_\_\_

**No allowable will be assigned to the well until all interests have been consolidated (by communitization, unitization forced-pooling, or otherwise) or until a non-standard unit, eliminating such interests, has been approved by the Commission.** NOTE: revised to show moved location. 5-3-88



I hereby certify that the information contained herein is true and complete to the best of my knowledge and belief.

Name \_\_\_\_\_  
Drilling Clerk  
Position \_\_\_\_\_  
Meridian Oil Inc.  
Company \_\_\_\_\_  
*5-20-77*

I have nothing but the best location shown on this plan as plotted from field notes of actual surveys made by me as under my supervision, and that the same is true and correct to the best of my knowledge and belief.

**Date Surveyed**  
**MAY 3, 1988**

**Registered Professional Engineer  
and/or Land Surveyor**

NEALE C. EDWARDS

**Certificate No.**  
1255