

UNITED STATES
DEPARTMENT OF THE INTERIOR
BUREAU OF LAND MANAGEMENT

APPLICATION FOR PERMIT TO DRILL, DEEPEN, OR PLUG BACK

1a. TYPE OF WORK

DRILL ☒

DEEPEN ☐

PLUG BACK ☐

b. TYPE OF WELL

OIL
WELL ☐

GAS
WELL ☒

OTHER

SINGLE
ZONE ☒

MULTIPLE
ZONE ☐

2. NAME OF OPERATOR

Meridian Oil Inc.

3. ADDRESS OF OPERATOR

PO Box 4289, Farmington, NM 87499

4. LOCATION OF WELL (Report location clearly and in accordance with any State requirements.)

At surface 1180'S, 970'W

At proposed prod. zone

14. DISTANCE IN MILES AND DIRECTION FROM NEAREST TOWN OR POST OFFICE*

8 miles from Aztec, NM

15. DISTANCE FROM PROPOSED*

LOCATION TO NEAREST
PROPERTY OR LEASE LINE, FT.
(Also to nearest drlg. unit line, if any)

970'

16. NO. OF ACRES IN LEASE

2066.44

17. NO. OF ACRES ASSIGNED
TO THIS WELL

156.57 160.00

18. DISTANCE FROM PROPOSED LOCATION*

TO NEAREST WELL, DRILLING, COMPLETED,
OR APPLIED FOR, ON THIS LEASE, FT.

200'

19. PROPOSED DEPTH

3147'

20. ROTARY OR CABLE TOOLS

Rotary

21. ELEVATIONS (Show whether DF, RT, GR, etc.)

6377' GL

DRILLING OPERATIONS AUTHORIZED ARE

SUBJECT TO COMPLIANCE WITH ATTACHED

This action is subject to technical and
procedural review pursuant to 43 CFR 3165.3
and appeal pursuant to 43 CFR 3165.4.

22. APPROX. DATE WORK WILL START*

23.

PROPOSED CASING REQUIREMENTS

SIZE OF HOLE	SIZE OF CASING	WEIGHT PER FOOT	SETTING DEPTH	QUANTITY OF CEMENT
12 1/4"	9 5/8"	32.3#	200'	130 cf. circulated
8 3/4"	7"	20.0#	2900'	920 cf circ. surface
6 1/4"	5 1/2" liner	23.0#	3147'	do not cement

The Fruitland coal formation will be completed.

A 3000 psi WP and 6000 psi test double gate preventer equipped with
blind and pipe rams will be used for blow out prevention on this well.

This gas is dedicated.

The NW/4 of Section 23 is dedicated to this well.

RECEIVED

AUG 01 1988

OIL CON. DIV.
DIST. 3

IN ABOVE SPACE DESCRIBE PROPOSED PROGRAM: If proposal is to deepen or plug back, give data on present productive zone and proposed new productive
zone. If proposal is to drill or deepen directionally, give pertinent data on subsurface locations and measured and true vertical depths. Give blowout
preventer program, if any.

24.

SIGNED

[Signature]

TITLE

Regulatory Affairs

DATE

07-21-88

(This space for Federal or State office use)

PERMIT NO.

APPROVAL DATE

DATE

CONDITIONS OF APPROVAL, IF ANY:

TITLE

Not warrant that the applicant
holds legal or equitable rights
or title to this place.

NMOCC

*See Instructions On Reverse Side

Title 18 U.S.C. Section 1001, makes it a crime for any person knowingly and willfully to make to any department or agency of the
United States any false, fictitious or fraudulent statements or representations as to any matter within its jurisdiction.

All distances must be from the outer boundaries of the Section.

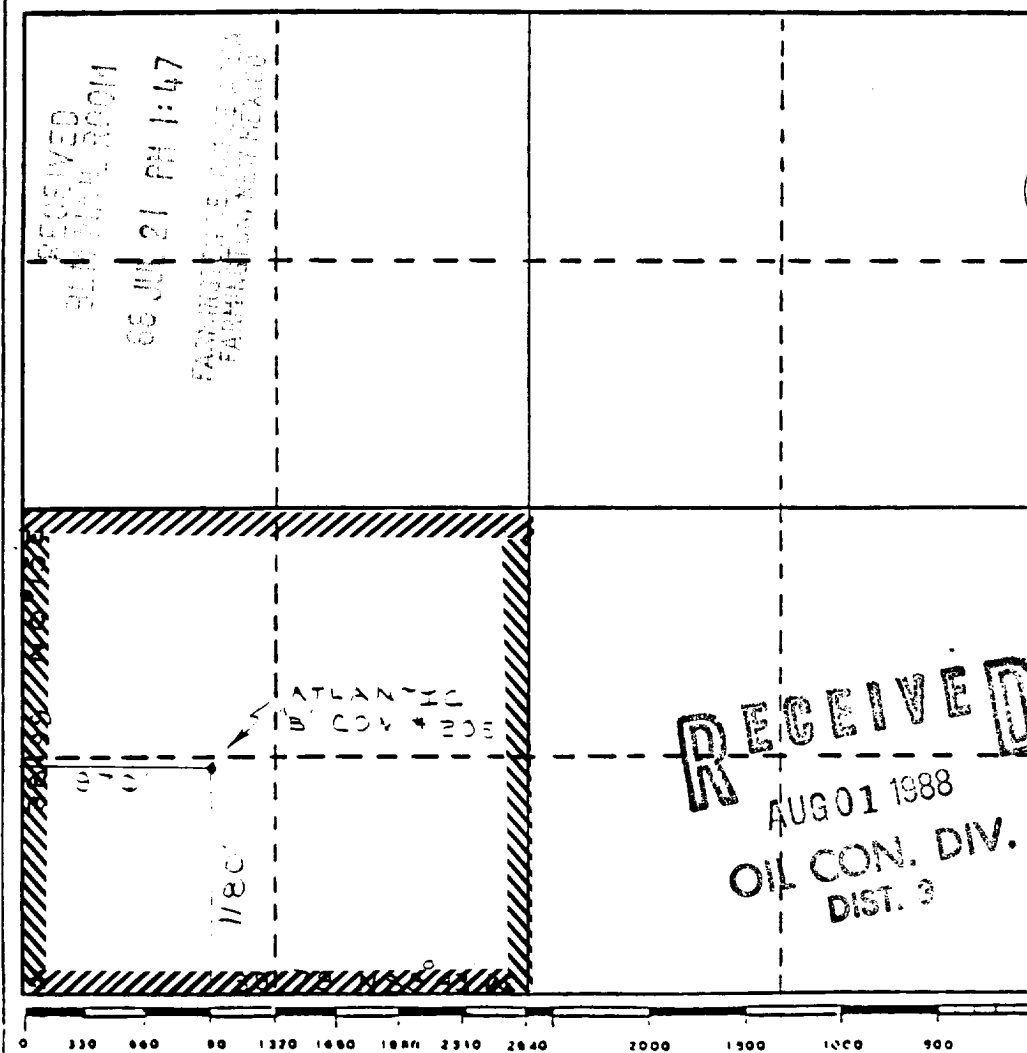
Operator Meridian Oil Co.		Lease Atlantic "B" Com NM-013688		Well No. 205
Unit Letter M	Section 23	Township T31N	Range R10W	County San Juan County
Actual Footage Location of Wells 1180 feet from the South line and 970 feet from the West line				
Ground Level Elev. 6377	Producing Formation Fruitland Coal	Pool Undesignated	Dedicated Acreage 160 156.57 Acres	

1. Outline the acreage dedicated to the subject well by colored pencil or hatchure marks on the plat below.
2. If more than one lease is dedicated to the well, outline each and identify the ownership thereof (both as to working interest and royalty).
3. If more than one lease of different ownership is dedicated to the well, have the interests of all owners been consolidated by communitization, unitization, force-pooling, etc?

☒ Yes ☐ No If answer is "yes," type of consolidation communitization

If answer is "no," list the owners and tract descriptions which have actually been consolidated. (Use reverse side of this form if necessary.)

No allowable will be assigned to the well until all interests have been consolidated (by communitization, unitization, forced-pooling, or otherwise) or until a non-standard unit, eliminating such interests, has been approved by the Division.



CERTIFICATION

I hereby certify that the information contained herein is true and complete to the best of my knowledge and belief.

[Signature]
Name
Drilling Clerk

Position
Meridian Oil Inc.

Company
7-21-88

Date

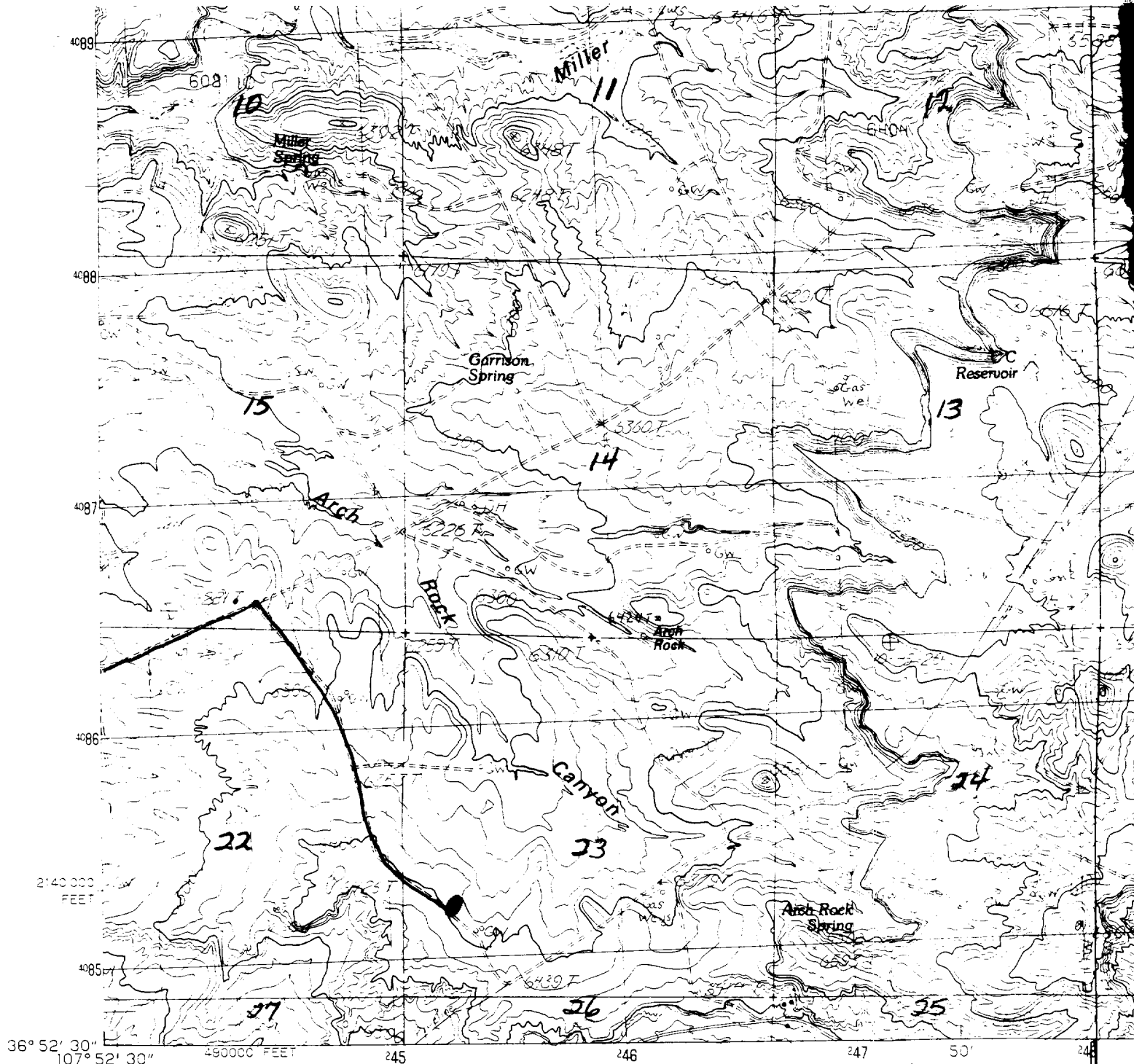
[Signature]
I hereby certify that the well location shown on this plat was plotted from field notes of actual surveys made by me or under my supervision, and that the same is true and correct to the best of my knowledge and belief.

Registered Professional
Land Surveyor

Date Surveyed
June 8, 1988

Registered Land Surveyor
R. Howard Daggett

Certificate No.
9679



PRODUCED BY THE UNITED STATES GEOLOGICAL SURVEY
 CONTROL BY USGS, NOS/NOAA
 COMPILED FROM AERIAL PHOTOGRAPHS TAKEN 1981
 FIELD CHECKED 1981 MAP EDITED 1985
 PROJECTION TRANSVERSE MERCATOR
 GRID: 1000-METER UNIVERSAL TRANSVERSE MERCATOR ZONE 13
 10,000-FOOT STATE GRID TICKS NEW MEXICO, WEST ZONE
 COLORADO, SOUTH ZONE

UTM GRID DECLINATION 1° 41' WEST
 1985 MAGNETIC NORTH DECLINATION 12' EAST
 VERTICAL DATUM NATIONAL GEODETIC VERTICAL DATUM OF 1929
 HORIZONTAL DATUM 1927 NORTH AMERICAN DATUM

To place on the predicted North American Datum of 1983,
 move the projection lines as shown by dashed corner ticks
 (2 meters north and 55 meters east)

There may be private inholdings within the boundaries of any
 Federal and State Reservations shown on this map

All marginal data and lettering generated and positioned by
 automated type placement procedures

ATLANTIC
 REGION

NORTH

R-10-W

1000 0 1
 1000

PROVISIONAL MAP

Produced from original
 manuscript drawings. Informa-
 tion shown as of date of
 field check.