

UNITED STATES  
DEPARTMENT OF THE INTERIOR  
GEOLOGICAL SURVEY

30-045-21031

## APPLICATION FOR PERMIT TO DRILL, DEEPEN, OR PLUG BACK

## 1a. TYPE OF WORK

DRILL ☒DEEPEN ☐PLUG BACK ☐

## b. TYPE OF WELL

OIL  
WELL ☐GAS  
WELL ☒

OTHER

SINGLE  
ZONE ☒MULTIPLE  
ZONE ☐

## 2. NAME OF OPERATOR

Tenneco Oil Company

## 3. ADDRESS OF OPERATOR

P.O. Box 3249, Englewood, CO 80155

## 4. LOCATION OF WELL (Report location clearly and in accordance with any State requirements.)\*

At surface

NW/4 Sec. 34, 1840' FWL, 615' FNL

At proposed prod. zone

Same

## 14. DISTANCE IN MILES AND DIRECTION FROM NEAREST TOWN OR POST OFFICE\*

13 miles NE of Aztec

## 15. DISTANCE FROM PROPOSED\*

LOCATION TO NEAREST

PROPERTY OR LEASE LINE, FT.

(Also to nearest drilg. unit line, if any)

615'

## 18. DISTANCE FROM PROPOSED LOCATION\*

TO NEAREST WELL, DRILLING, COMPLETED,  
OR APPLIED FOR, ON THIS LEASE, FT.

350'

## 21. ELEVATIONS (Show whether DF, RT, GR, etc.)

6061' GR

## 23.

## PROPOSED CASING AND CEMENTING PROGRAM

SIZE OF HOLE	SIZE OF CASING	WEIGHT PER FOOT	SETTING DEPTH	
20"	20"		± 60'	Driven
17 1/2"	13 3/8"	54.5#	± 250'	347 cu.ft. - Circ. to Surface
12 1/4"	9 5/8"	36#	± 3213'	1519 cu.ft. - Circ. to Surface
8 3/4"	7" Liner	23#	± 7490'	1331 cu.ft. -
6 1/4"	4 1/2" Liner	13.5#	± 7340' - ± 8612'	260 cu.ft. -

See Attached Drilling Procedure.

See Item 1-B of Surface Use Plan and Map 2A &amp; 2B for BLM Right-of-Way Application.

Subject to approval of Director

IN ABOVE SPACE DESCRIBE PROPOSED PROGRAM: If proposal is to deepen or plug back, give data on present productive zone and proposed new productive zone. If proposal is to drill or deepen directionally, give pertinent data on subsurface locations and measured and true vertical depths. Give blowout preventer program, if any.

24.

SIGNED

Larry Bell

TITLE

Admin. Supervisor

DATE

7/6/88

(This space for Federal or State office use)

PERMIT NO.

APPROVAL DATE

APPROVED BY

TITLE

DATE

CONDITIONS OF APPROVAL, IF ANY:

ok  
etc

Pech

NEW MEXICO OIL CONSERVATION COMMISSION  
WELL LOCATION AND ACREAGE DEDICATION PLAT

Form C-102  
Supersedes C-128  
Effective 1-1-65

All distances must be from the outer boundaries of the Section.

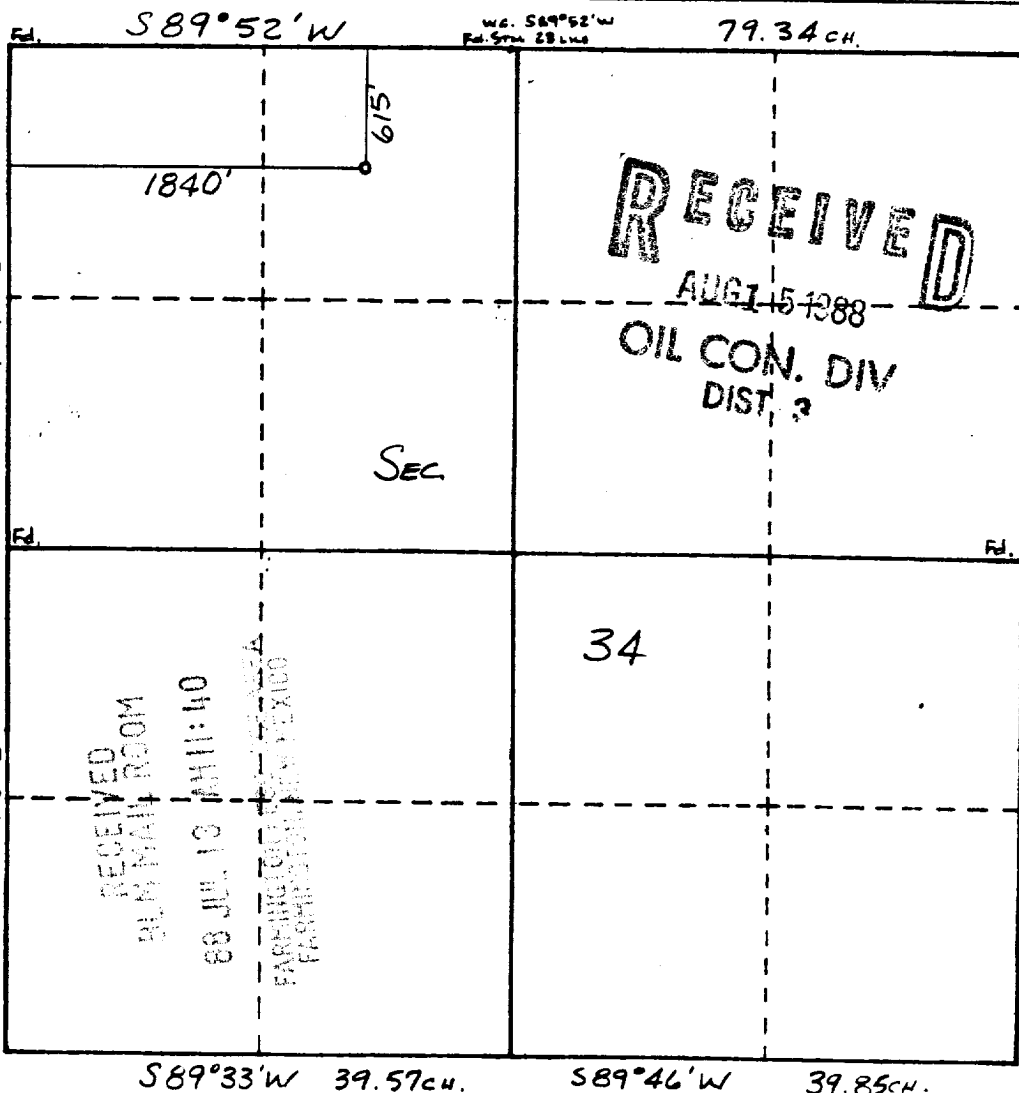
Operator <b>TENNECO OIL COMPANY</b>			Lease <b>PRITCHARD SWD</b>		Well No. <b>12-SWD</b>
Unit Letter <b>C</b>	Section <b>34</b>	Township <b>31 N</b>	Range <b>9 W</b>	County <b>SAN JUAN</b>	
Actual Footage Location of Well: <b>615</b> feet from the <b>NORTH</b> line and <b>1840</b> feet from the <b>WEST</b> line					
Ground Level Elev. <b>6061</b>	Producing Formation <b>Entrada - Injection</b>		Pool <b>Injection</b>		Dedicated Acreage: --- Acres

1. Outline the acreage dedicated to the subject well by colored pencil or hachure marks on the plat below.
2. If more than one lease is dedicated to the well, outline each and identify the ownership thereof (both as to working interest and royalty).
3. If more than one lease of different ownership is dedicated to the well, have the interests of all owners been consolidated by communitization, unitization, force-pooling, etc?

☐ Yes ☐ No If answer is "yes," type of consolidation \_\_\_\_\_

If answer is "no," list the owners and tract descriptions which have actually been consolidated. (Use reverse side of this form if necessary.) \_\_\_\_\_

No allowable will be assigned to the well until all interests have been consolidated (by communitization, unitization, forced-pooling, or otherwise) or until a non-standard unit, eliminating such interests, has been approved by the Commission.



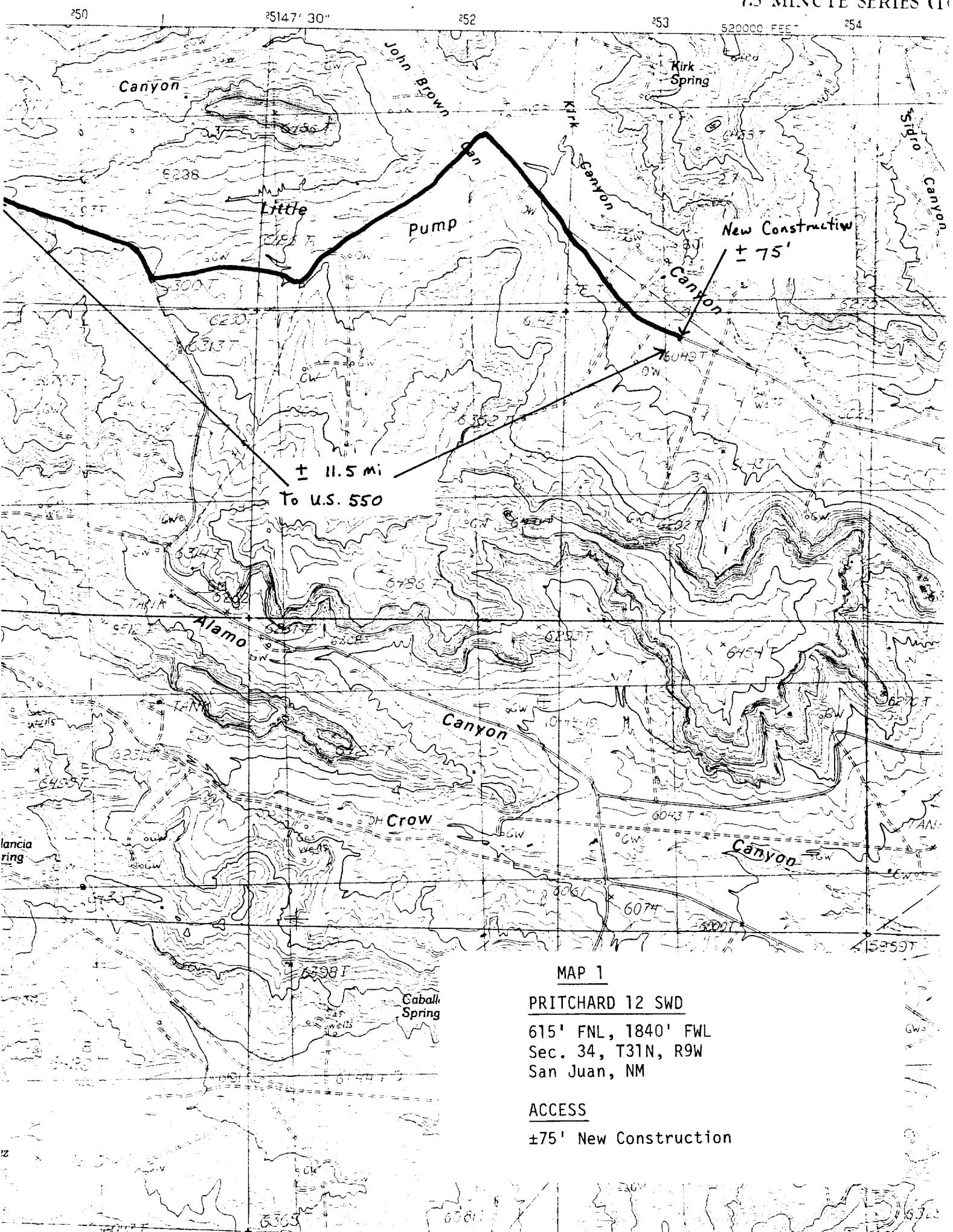
CERTIFICATION

I hereby certify that the information contained herein is true and complete to the best of my knowledge and belief.

Name  
**Larry Bell**  
Position  
**Administrative Supervisor**  
Company  
**Tenneco Oil Company**  
Date  
**July 6, 1988**

I hereby certify that the well location shown on this plat was plotted from field notes of actual surveys made by me or under my supervision, and that the same is true and correct to the best of my knowledge and belief.

Date Surveyed  
**7/13/88**  
Registered Professional Engineer and Land Surveyor  
**WILLIAM E. MAHNE II**  
Certificate No.  
**18466**



## MAP 1

PRITCHARD 12 SWD

615' FNL, 1840' FWL  
 Sec. 34, T31N, R9W  
 San Juan, NM

## ACCESS

$\pm 75'$  New Construction