

UNITED STATES
DEPARTMENT OF THE INTERIOR
BUREAU OF LAND MANAGEMENT

APPLICATION FOR PERMIT TO DRILL, DEEPEN, OR PLUG BACK

1a. TYPE OF WORK

DRILL ☒

DEEPEN ☐

PLUG BACK ☐

b. TYPE OF WELL

OIL
WELL ☐

GAS
WELL ☒

OTHER

SINGLE
ZONE ☒

MULTIPLE
ZONE ☐

2. NAME OF OPERATOR

Wintershall Corporation

(303) 694-0988

3. ADDRESS OF OPERATOR

RECEIVED 5251 DTC Pkwy., Ste. 500, Englewood, Co. 80111

Report location clearly and in accordance with any State requirements.*

1650' FSL & 1850' FEL (NWSE)

4. PROPOSED ZONE

Same

14. DISTANCE IN MILES AND DIRECTION FROM NEAREST TOWN OR POST OFFICE*

Durango, Colorado 11 air miles NW of Farmington, NM

15. DISTANCE FROM PROPOSED*

LOCATION TO NEAREST
PROPERTY OR LEASE LINE, FT.
(Also to nearest drlg. unit line, if any)

1,850'

16. NO. OF ACRES IN LEASE

60,000

17. NO. OF ACRES ASSIGNED

TO THIS WELL

E 320

18. DISTANCE FROM PROPOSED LOCATION*

TO NEAREST WELL, DRILLING, COMPLETED,
OR APPLIED FOR, ON THIS LEASE, FT.

9,811'

19. PROPOSED DEPTH

5,350'

20. ROTARY OR CABLE TOOLS

Rotary

21. ELEVATIONS (Show whether DF, RT, GR, etc.)

5,537' ungraded ground

22. APPROX. DATE WORK WILL START*

Dec. 20, 1988

23.

PROPOSED CASING AND CEMENTING PROGRAM

SIZE OF HOLE	SIZE OF CASING	WEIGHT PER FOOT	SETTING DEPTH	QUANTITY OF CEMENT
12-1/4"	8-5/8"	24* (K-55, ST&C)	240'	~150 cu ft or to surface
7-7/8"	5-1/2"	5.5* (J-55, LT&C)	5,350'	~300 cu ft (5,350-4,300')
				~900 cu ft (3,400'-surf)

RECEIVED

JAN 1 2 1989

OIL CON. DIV.
DIST. 3

Approval of this agreement/application does not warrant or
certify that the applicant has any or any applicable title
to these rights in the oil and gas which would entitle
the applicant to conduct operations thereon.

IN ABOVE SPACE DESCRIBE PROPOSED PROGRAM: If proposal is to deepen or plug back, give data on present productive zone and proposed new productive zone. If proposal is to drill or deepen directionally, give pertinent data on subsurface locations and measured and true vertical depths. Give blowout preventer program, if any.

24.

SIGNED *Brian Wood*

Consultant

12-5-88

(This space for Federal or State office use)

cc: BIA, BLM (3+2 for OCD), Clausen (3), G. Hammond, Howell (3)

PERMIT NO.

APPROVAL DATE

NMOC

APPROVED BY Sally Wisely

TITLE AREA MANAGER

DATE JAN 11 1989

CONDITIONS OF APPROVAL, IF ANY:

REMARKS
OK

*See Instructions On Reverse Side

Title 18 U.S.C. Section 1001, makes it a crime for any person knowingly and willfully to make to any department or agency of the United States any false, fictitious or fraudulent statements or representations as to any matter within its jurisdiction.

**NEW MEXICO OIL CONSERVATION COMMISSION
WELL LOCATION AND ACREAGE DEDICATION PLAT**

Form C-102
Supersedes C-120
Effective 1-1-64

All distances must be from the outer boundaries of the Section.

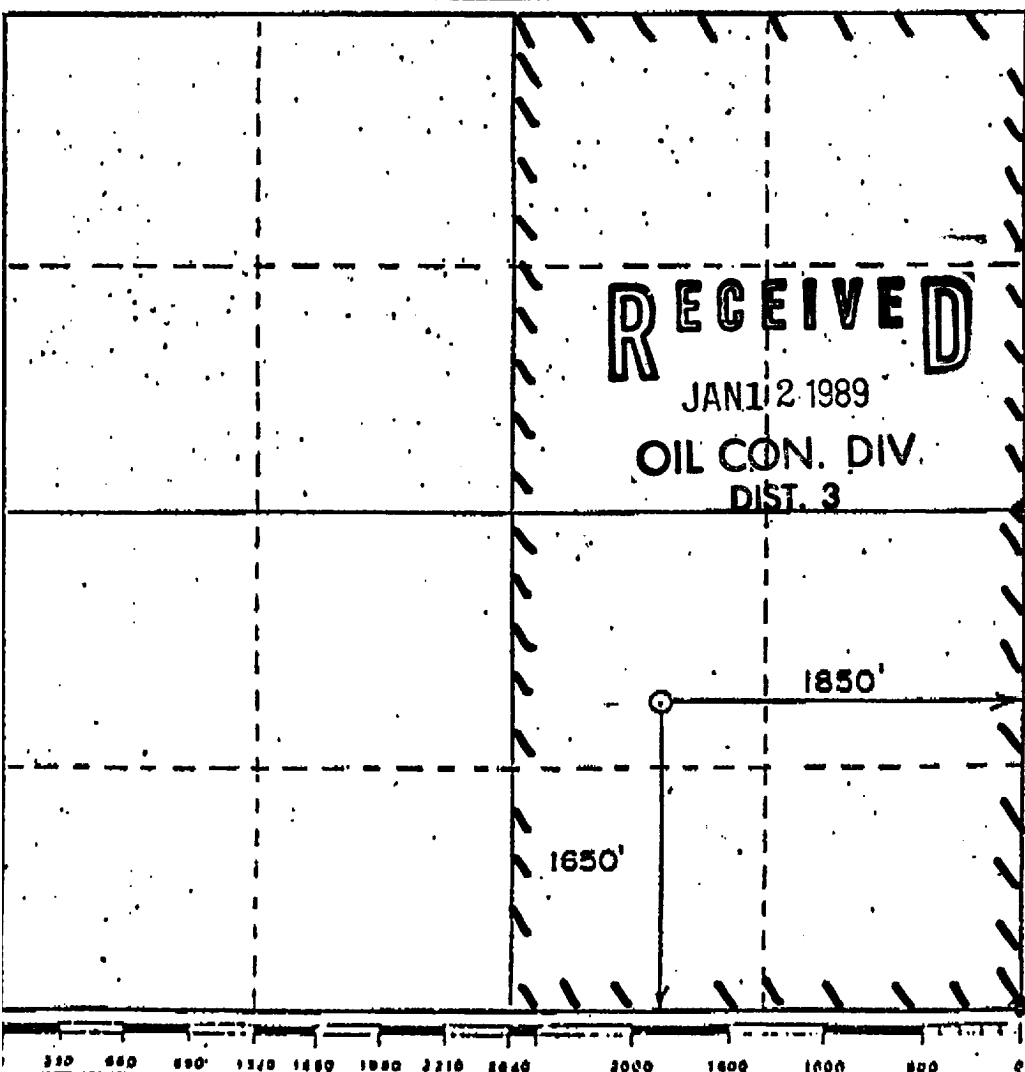
Operator WINTERSHALL CORPORATION			Lease Ute 30		Well No. UNU 30-33
Init Letter J	Section 30	Township 31 North	Range 14 West	County San Juan	
Actual Footage Location of Well:					
1650' feet from the South		line and		1850' feet from the East	
Ground Level Elev. 5537'	Producing Formation Dakota	Pool Basin Dakota Gas		Dedicated Acreage 320 Acres	

1. Outline the acreage dedicated to the subject well by colored pencil or hatchure marks on the plat below.
2. If more than one lease is dedicated to the well, outline each and identify the ownership thereof (both as to working interest and royalty).
3. If more than one lease of different ownership is dedicated to the well, have the interests of all owners been consolidated by communitization, unitization, force-pooling, etc?

☐ Yes ☐ No If answer is "yes," type of consolidation _____

If answer is "no," list the owners and tract descriptions which have actually been consolidated. (Use reverse side of this form if necessary.) _____

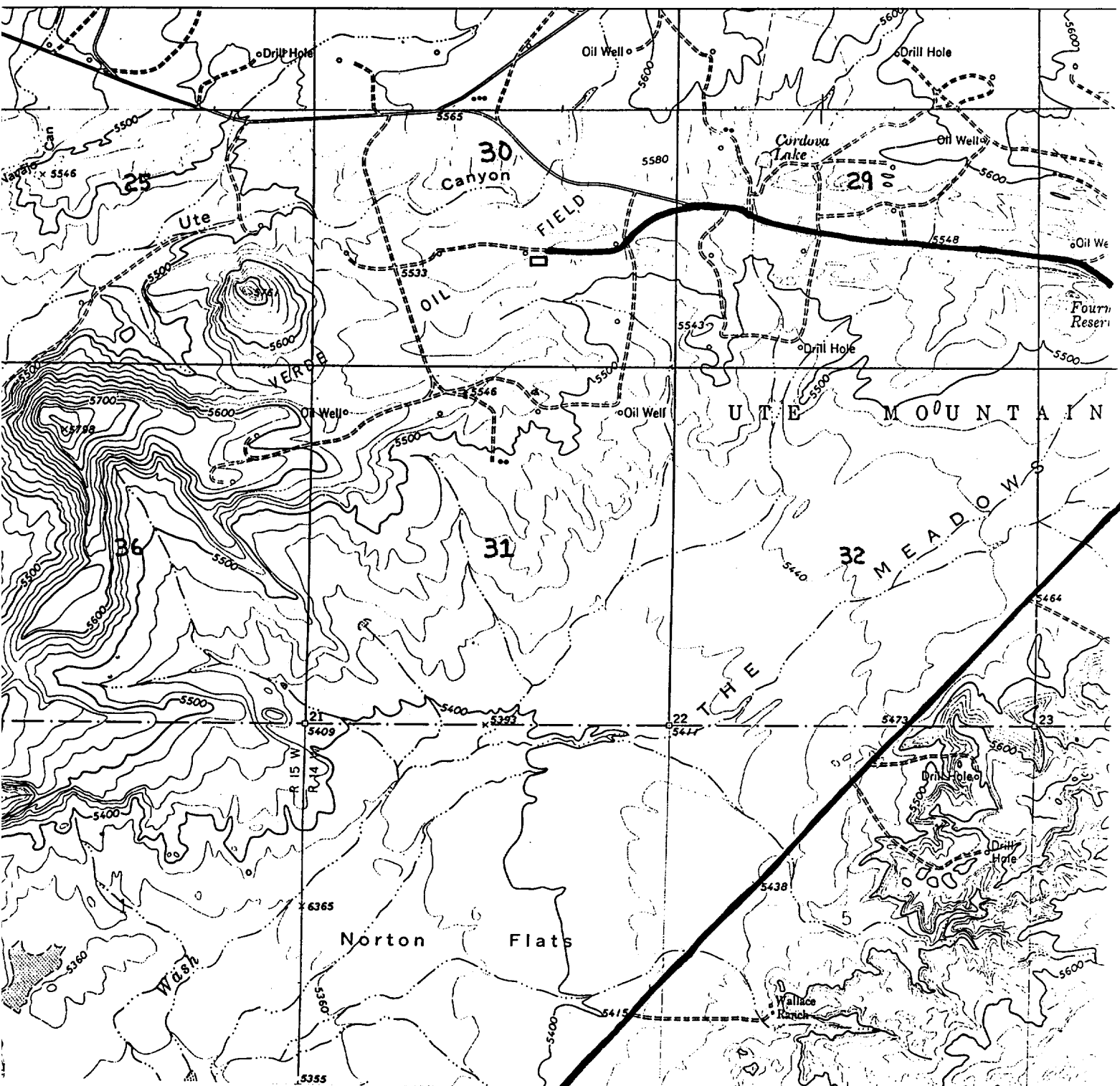
No allowable will be assigned to the well until all interests have been consolidated (by communitization, unitization, forced-pooling, or otherwise) or until a non-standard unit, eliminating such interests, has been approved by the Commission.



CERTIFICATION	
I hereby certify that the information contained herein is true and complete to the best of my knowledge and belief.	
Name	Brian Wood
Position	Consultant
Company	Wintershall Corporation
Date	December 5, 1988
I hereby certify that the well location shown on this plat was plotted from field notes of actual surveys made by me or under my supervision, and that the same is true and correct to the best of my knowledge and belief.	
Date	Dec 88
Registered Professional Engineer and or Land Surveyor	
6844	
Certificate No.	

Wintershall Corporation
Ute Mtn. Ute 30-33
1650' FSL & 1850' FEL
Sec. 30, T. 31 N., R. 14 W.
San Juan County, New Mexico

PAGE 14



Proposed Well: ☐

Access Route: 