

30-145-27293

UNITED STATES
DEPARTMENT OF THE INTERIOR
BUREAU OF LAND MANAGEMENT

RECEIVED
APR 12 1989
12 01:10

APPLICATION FOR PERMIT TO DRILL, DEEPEN, OR PLUG BACK

1a. TYPE OF WORK DRILL	5. LEASE NUMBER NM-021124
1b. TYPE OF WELL GAS	6. IF INDIAN, ALL. OR TRIBE NAME
2. OPERATOR MERIDIAN OIL INC.	7. UNIT AGREEMENT NAME
3. ADDRESS & PHONE NO. OF OPERATOR P O BOX 4289 FARMINGTON, NM 87499	8. FARM OR LEASE NAME NEWBERRY
4. LOCATION OF WELL 1390'S 1850'W	9. WELL NO. 100
14. DISTANCE IN MILES FROM NEAREST TOWN 8 MILES FROM FARMINGTON	10. FIELD, POOL, OR WILDCAT BASIN FRUITLAND COAL
	11. SEC. T. R. M OR BLK. K SEC. 17 T31N R12W NMPM
	12. COUNTY SAN JUAN
	13. STATE NM
15. DISTANCE FROM PROPOSED LOCATION 1390' TO NEAREST PROPERTY OR LEASE LINE.	16. ACRES IN LEASE 17. ACRES ASSIGNED TO WELL 320.00
18. DISTANCE FROM PROPOSED LOCATION TO NEAREST WELL DR. 300' COMPL., OR APPLIED FOR ON THIS LEASE.	19. PROPOSED DEPTH 20. ROTARY OR CABLE TOOLS 2250' ROTARY
21. ELEVATIONS (DF, FT, GR, ETC.) 5974'GL	22. APPROX. DATE WORK WILL START

RECEIVED
APR 21 1989
OIL CON. DIV.
DIST. 3

This action is subject to technical and
procedural review pursuant to 43 CFR 3165.3
and appeal pursuant to 43 CFR 3165.4.

23. PROPOSED CASING AND CEMENTING PROGRAM

*SEE OPERATIONS PLAN

DRILLING OPERATIONS AUTHORIZED ARE
SUBJECT TO COMPLIANCE WITH ATTACHED
"GENERAL REQUIREMENTS".

24. AUTHORIZED BY: Steve Beardslee
REGULATORY AFFAIRS

4-7-89
DATE

PERMIT NO. _____ APPROVAL DATE _____ APPROVED X
AS AMENDED
APPROVED BY _____ TITLE _____ DATE _____

Approval of this action does not constitute an approval of the proposed well. This format is issued in lieu of US BLM FORM 3160-3. This is legal or equity. Title to this land is not affected.
APR 18 1989
for AREA MANAGER

OPERATIONS PLAN

DATE: APR 7, 1989

Well Name: 100 NEWBERRY 1390'S 1850'W
 Sec. 17 T31N R12W SAN JUAN NEW MEXICO
 BASIN FRUITLAND COAL Elevation 5974'GL

Formation tops: Surface- NACIMIENTO
 Ojo Alamo- 589
 Kirtland- 606
 Fruitland- 1900
 Fruitland Coal Top- 2189
 Fruitland Coal Base- 2245
 Intermediate TD- 2169
 Total Depth- 2250
 Pictured Cliffs- 2257

Logging Program: Mud logs from intermediate to total depth.

Mud Program: Low solid non-dispersed mud from surface to total depth.

Casing Program:	Hole Size	Depth Interval	Csg. Size	Weight	Grade
	12 1/4"	0 - 200	9 5/8"	32.3#	H-40
	8 3/4"	0 - 2169	7"	20.0#	K-55
	6 1/4"	2119 - 2250	5 1/2"	15.5#	K-55
Tubing Program:		0 - 2250	2 7/8"	6.5#	J-55

Float Equipment: 9 5/8" surface casing - saw tooth guide shoe.

7" intermediate casing - guide shoe and self-fill insert float valve. Three centralizers run every other joint above shoe. Run insert float one joint above the guide shoe.

5 1/2" production liner - float shoe on bottom and a pre-drilled liner run to the 7" casing with a minimum 50' overlap. Liner hanger is a double slip grip type.

Wellhead Equipment: 9 5/8" x 7" x 2 7/8" x 11" 3000 psi xmas tree assembly.

Cementing:

9 5/8" surface casing - cement with 106 sacks of class "B" cement with 1/4# flocele/sack and 3% calcium chloride (125 cu ft. of slurry, 100% excess to circulate to surface). WOC 12 hours. Test casing to 600 psi for 30 minutes.

7" intermediate casing - lead with 185 sacks of 65/35 class "B" poz with 6% gel, 2% calcium chloride and 1/2 cu.ft. Perlite/sack (10.3 gallons of water/sack) tail with 100 sacks of class "B" with 2% calcium chloride. 475 cu ft. of slurry, 100% excess to cover the Ojo Alamo. Run temperature survey at 8 hours. WOC 12 hours. Test casing to 1500 psi for 30 minutes.

5 1/2" liner - do not cement.

The Fruitland coal formation will be completed.

A 3000 psi WP and 6000 psi test double gate preventer equipped with blind and pipe rams will be used for blow out prevention on this well. This gas is dedicated.

The W/2 of Section 17 is dedicated to this well.

OIL CONSERVATION DIVISION

P.O. Box 2088
Santa Fe, New Mexico 87504-2088

DISTRICT I
P.O. Box 1980, Hobbs, NM 88240

DISTRICT II
P.O. Drawer DD, Artesia, NM 88210

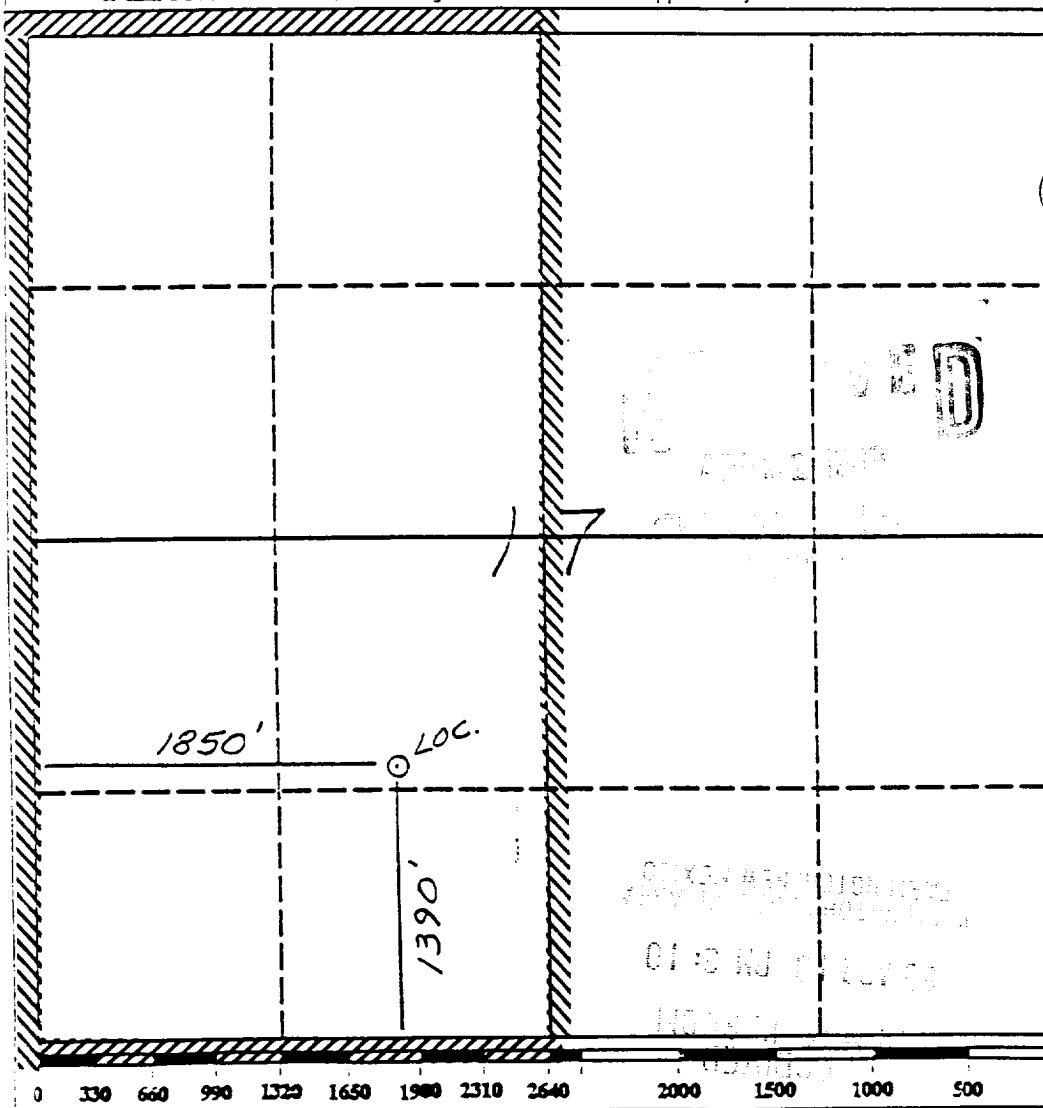
DISTRICT III
1000 Rio Brazos Rd., Aztec, NM 87410

WELL LOCATION AND ACREAGE DEDICATION PLAT

All Distances must be from the outer boundaries of the section

Operator Meridian Oil Inc.			Lease Newberry (NM-021124)		Well No. 100
Unit Letter X	Section 17	Township 31 North	Range 12 West	County San Juan	
Actual Footage Location of Well: 1390 feet from the South line and 1850 feet from the West line					
Ground level Elev. 5974	Producing Formation Fruitland Coal		Pool Basin	Dedicated Acreage: 320.0 Acres	

- Outline the acreage dedicated to the subject well by colored pencil or hatchure marks on the plat below.
- If more than one lease is dedicated to the well, outline each and identify the ownership thereof (both as to working interest and royalty).
- If more than one lease of different ownership is dedicated to the well, have the interest of all owners been consolidated by communitization, unitization, force-pooling, etc.?
☐ Yes ☐ No If answer is "yes" type of consolidation _____
If answer is "no" list the owners and tract descriptions which have actually been consolidated. (Use reverse side of this form if necessary.) _____
No allowable will be assigned to the well until all interests have been consolidated (by communitization, unitization, forced-pooling, or otherwise) or until a non-standard unit, eliminating such interest, has been approved by the Division.



OPERATOR CERTIFICATION

I hereby certify that the information contained herein is true and complete to the best of my knowledge and belief.

Signature *Peggy Bradfield*
Printed Name **Peggy Bradfield**
Position **Regulatory Affairs**
Company **Meridian Oil Inc.**
Date **4-7-89**

SURVEYOR CERTIFICATION

I hereby certify that the well location shown on this plat was plotted from field notes of actual surveys made by me or under my supervision, and that the same is true and correct to the best of my knowledge and belief.

Date Surveyed **1-31-89**
Neale C. Edwards
Signature & Seal of Professional Surveyor

Certificate No. **6857**

