

30-145-27246

UNITED STATES  
DEPARTMENT OF THE INTERIOR  
BUREAU OF LAND MANAGEMENT

APPLICATION FOR PERMIT TO DRILL, DEEPEN, OR PLUG BACK

1a. TYPE OF WORK  
DRILL

1b. TYPE OF WELL  
GAS

2. OPERATOR  
SOUTHLAND ROYALTY CO.

3. ADDRESS & PHONE NO. OF OPERATOR  
P O BOX 4289  
FARMINGTON, NM 87499

4. LOCATION OF WELL  
1865'S 1215'W

5. LEASE NUMBER  
SF-077648

6. IF INDIAN, ALL. OR TRIBE NAME

7. UNIT AGREEMENT NAME

8. FARM OR LEASE NAME  
DAVIS

9. WELL NO.  
501

10. FIELD, POOL, OR WILDCAT  
BASIN FRUITLAND COAL

11. SEC. T. R. M OR BLK.  
L SEC. 11 T31N R12W NMPM

12. COUNTY  
SAN JUAN

13. STATE  
NM

14. DISTANCE IN MILES FROM NEAREST TOWN  
6 MILES FROM AZTEC

15. DISTANCE FROM  
PROPOSED LOCATION 1215'  
TO NEAREST PROPERTY  
OR LEASE LINE.

16. ACRES IN LEASE  
2198.38

17. ACRES ASSIGNED TO WELL  
304.39  
48

18. DISTANCE FROM  
PROPOSED LOCATION  
TO NEAREST WELL DR. 300'  
COMPL., OR APPLIED  
FOR ON THIS LEASE.

19. PROPOSED DEPTH  
2780'

20. ROTARY OR CABLE TOOLS  
ROTARY

21. ELEVATIONS (DF, FT, GR, ETC.)  
6263'GL

22. APPROX. DATE WORK WILL START

23. PROPOSED CASING AND CEMENTING PROGRAM

\*SEE OPERATIONS PLAN

DRILLING OPERATIONS AUTHORIZED ARE  
SUBJECT TO COMPLIANCE WITH ATTACHED  
"GENERAL REQUIREMENTS".

24. AUTHORIZED BY: *[Signature]*  
REGULATORY AFFAIRS

4-7-89  
DATE

PERMIT NO. \_\_\_\_\_ APPROVAL DATE \_\_\_\_\_

APPROVED BY \_\_\_\_\_ TITLE \_\_\_\_\_ DATE \_\_\_\_\_

APPROVED  
AS AMENDED

APR 18 1989

NOTE: THIS FORMAT IS ISSUED IN LIEU OF US BLM FORM 3160-2

AREA MANAGER

# OPERATIONS PLAN

DATE: APR 7, 1981

Well Name: 501 DAVIS 1865'S 1215'W  
 Sec. 11 T31N R12W SAN JUAN NEW MEXICO  
 BASIN FRUITLAND COAL Elevation 6263'GL

Formation tops: Surface- NACIMIENTO  
 Ojo Alamo- 1000  
 Kirtland- 1035  
 Fruitland- 2348  
 Fruitland Coal Top- 2552  
 Fruitland Coal Base- 2758  
 Intermediate TD- 2530  
 Total Depth- 2780  
 Pictured Cliffs- 2798

Logging Program: Mud logs from intermediate to total depth.

Mud Program: Low solid non-dispersed mud from surface to total depth.

Casing Program:	Hole Size	Depth Interval	Csg. Size	Weight	Grade
	12 1/4"	0 - 200	9 5/8"	32.3#	H-40
	8 3/4"	0 - 2530	7"	20.0#	K-55
	6 1/4"	2480 - 2780	5 1/2"	15.5#	K-55
Tubing Program:		0 - 2780	2 7/8"	6.5#	J-55

Float Equipment: 9 5/8" surface casing - saw tooth guide shoe.

7" intermediate casing - guide shoe and self-fill insert float valve. Three centralizers run every other joint above shoe. Run insert float one joint above the guide shoe.

5 1/2" production liner - float shoe on bottom and a pre-drilled liner run to the 7" casing with a minimum 50' overlap. Liner hanger is a double slip grip type.

Wellhead Equipment: 9 5/8" x 7" x 2 7/8" x 11" 3000 psi xmas tree assembly.

## Cementing:

9 5/8" surface casing - cement with 106 sacks of class "B" cement with 1/4# flocele/sack and 3% calcium chloride (125 cu ft. of slurry, 100% excess to circulate to surface). WOC 12 hours. Test casing to 600 psi for 30 minutes.

7" intermediate casing - lead with 177 sacks of 65/35 class "B" poz with 6% gel, 2% calcium chloride and 1/2 cu.ft. Perlite/sack (10.3 gallons of water/sack) tail with 100 sacks of class "B" with 2% calcium chloride. 460 cu ft. of slurry, 100% excess to cover the Ojo Alamo. Run temperature survey at 8 hours. WOC 12 hours. Test casing to 1500 psi for 30 minutes.

5 1/2" liner - do not cement.

The Fruitland coal formation will be completed.

A 3000 psi WP and 6000 psi test double gate preventer equipped with blind and pipe rams will be used for blow out prevention on this well. This gas is dedicated.

The W/2 of Section 11 is dedicated to this well.

Submit to Appropriate  
District Office  
State Lease - 4 copies  
For Lease - 3 copies

State of New Mexico  
Energy, Minerals and Natural Resources Department

Form C-102  
Revised 1-1-89

OIL CONSERVATION DIVISION

P.O. Box 2088  
Santa Fe, New Mexico 87504-2088

DISTRICT I  
P.O. Box 1980, Hobbs, NM 88240

DISTRICT II  
P.O. Drawer DD, Artesia, NM 88210

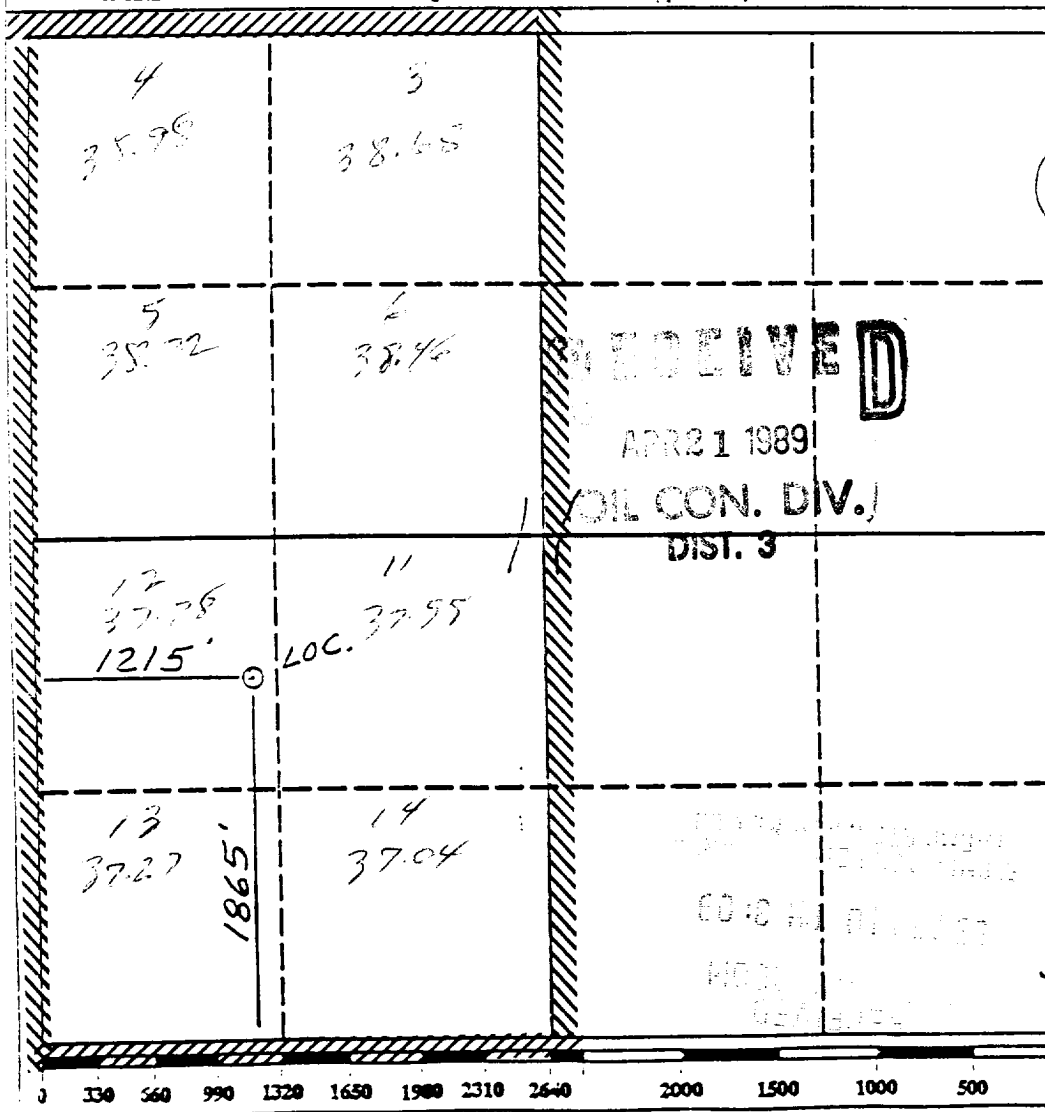
DISTRICT III  
1000 Rio Brazos Rd., Aztec, NM 87410

WELL LOCATION AND ACREAGE DEDICATION PLAT

All Distances must be from the outer boundaries of the section

Operator Southland Royalty Company		Lease Davis (SF-077648)		Well No. 501
Unit Letter L	Section 11	Township 31 North	Range 12 West	County San Juan
Actual Footage Location of Well: 1865 feet from the South line and 1215 feet from the West line				
Ground level Elev. 6263	Producing Formation Fruitland Coal	Pool Basin	Dedicated Acreage: 304.39 Acres	

- Outline the acreage dedicated to the subject well by colored pencil or hatchure marks on the plat below.
- If more than one lease is dedicated to the well, outline each and identify the ownership thereof (both as to working interest and royalty).
- If more than one lease of different ownership is dedicated to the well, have the interest of all owners been consolidated by communitization, unitization, force-pooling, etc?  
☐ Yes ☐ No If answer is "yes" type of consolidation \_\_\_\_\_  
If answer is "no" list the owners and tract descriptions which have actually been consolidated. (Use reverse side of this form if necessary). \_\_\_\_\_  
No allowable will be assigned to the well until all interests have been consolidated (by communitization, unitization, forced-pooling, or otherwise) or until a non-standard unit, eliminating such interest, has been approved by the Division.



OPERATOR CERTIFICATION

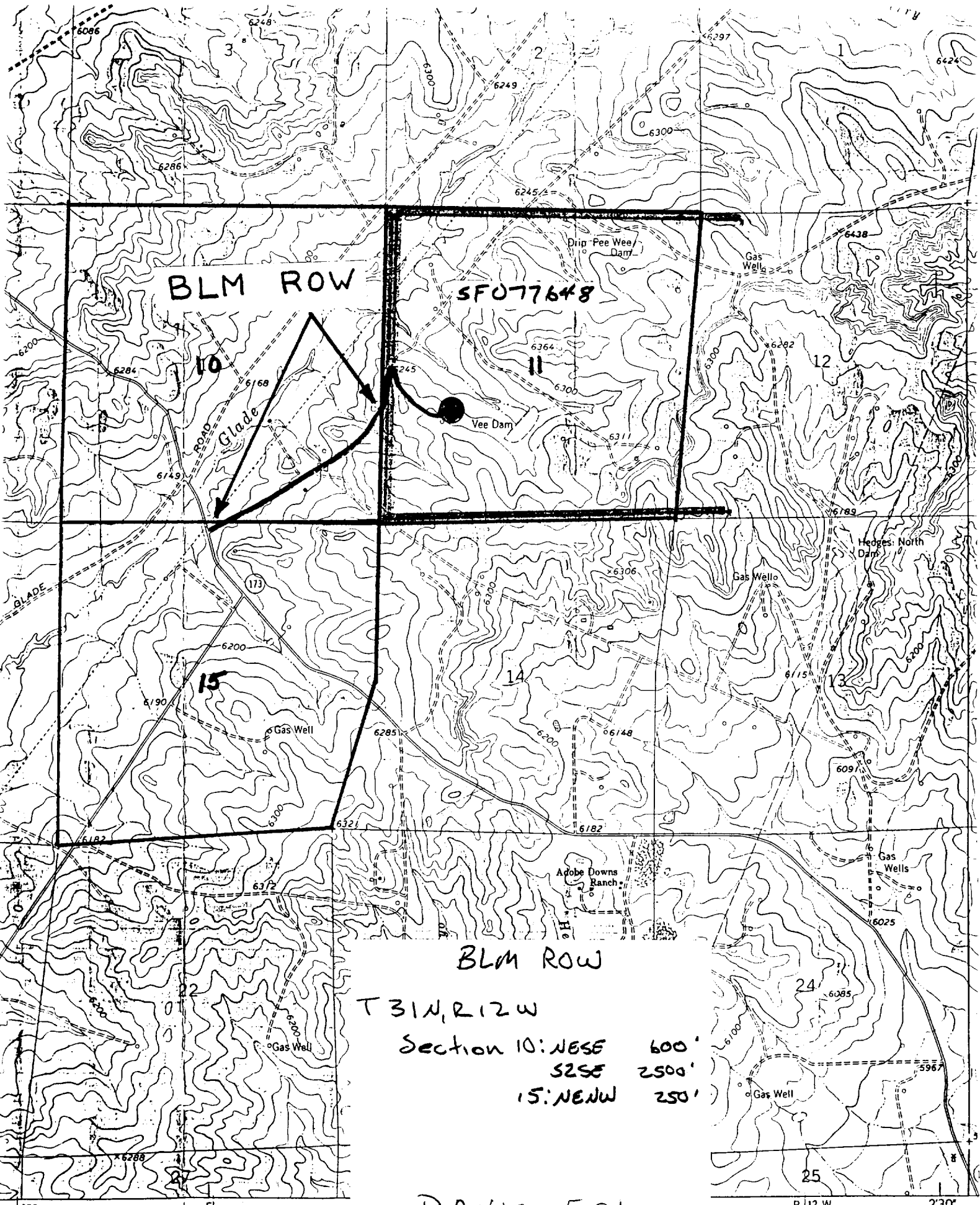
I hereby certify that the information contained herein is true and complete to the best of my knowledge and belief.

Signature \_\_\_\_\_  
Printed Name  
Peggy Bradfield  
Position  
Regulatory Affairs  
Company  
Southland Royalty Co  
Date  
4-7-89

SURVEYOR CERTIFICATION

I hereby certify that the well location shown on this plat was plotted from field notes of actual surveys made by me or under my supervision, and that the same is true and correct to the best of my knowledge and belief.  
1-31-89

Date Surveyed  
Neale C. Edwards  
Signature & Seal of Professional Surveyor  
Certificate No. 6057



BLM ROW

SF077648

10

11

12

Glade

Vee Dam

Hedges North Dam

Adobe Downs Ranch

BLM ROW

T31N, R12W

Section 10: NESE 600'  
S2SE 2500'  
15: NENW 250'

DAVIS 501

Map 2

