

UNITED STATES
DEPARTMENT OF THE INTERIOR
BUREAU OF LAND MANAGEMENT

APPLICATION FOR PERMIT TO DRILL, DEEPEN, OR PLUG BACK

1A. TYPE OF WORK

DRILL ☒

DEEPEN ☐

PLUG BACK ☐

B. TYPE OF WELL

OIL
WELL ☐

GAS
WELL ☒

OTHER

SINGLE
ZONE ☒

MULTIPLE
ZONE ☐

2. NAME OF OPERATOR

El Paso Natural Gas Company

3. ADDRESS OF OPERATOR

PO Box 4289, Farmington, NM 87499

4. LOCATION OF WELL (Report location clearly and in accordance with any State requirements.)*

At surface
820'S, 600'W

At proposed prod. zone

14. DISTANCE IN MILES AND DIRECTION FROM NEAREST TOWN OR POST OFFICE*

7 miles from Allison, CO

15. DISTANCE FROM PROPOSED*

LOCATION TO NEAREST
PROPERTY OR LEASE LINE, FT.
(Also to nearest drig. unit line, if any)

1495'

16. NO. OF ACRES IN LEASE

1872.99 Unit

17. NO. OF ACRES ASSIGNED

TO THIS WELL
320.00

18. DISTANCE FROM PROPOSED LOCATION*

TO NEAREST WELL DRILLING COMPLETED,
OR APPLIED FOR, ON THIS LEASE, FT.

300'

19. PROPOSED DEPTH

3100'

20. ROTARY OR CABLE TOOLS

Rotary

21. ELEVATIONS (Show whether DF, RT, GR, etc.)

6437' GL

DRILLING OPERATIONS AUTHORIZED ARE
SUBJECT TO COMPLIANCE WITH ATTACHED

22. APPROX. DATE WORK WILL START*

23. PROPOSED CASING AND CEMENTING PROGRAM

This section is subject to technical and
procedural review pursuant to 42 CFR 3165.3
and approval by the Bureau of Land Management.

SIZE OF HOLE	SIZE OF CASING	WEIGHT PER FOOT	SETTING DEPTH	QUANTITY OF CEMENT
12 1/4"	9 5/8"	32.3#	200'	125 cf. circulated
8 3/4"	7"	20.0#	3020'	234 cf. circ. surface
6 1/4"	5 1/2" liner	15.5#	3100'	do

RECEIVED

JUN 19 1989

The Fruitland coal formation will be completed.

OIL CON. DIV

A 3000 psi WP and 6000 psi test double gate preventer equipped with
blind and pipe rams will be used for blow out prevention on this well.

This gas is dedicated.

The W/2 of Section 19 is dedicated to this well.

(IN ABOVE SPACE DESCRIBE PROPOSED PROGRAM: If proposal is to deepen or plug back, give data on present productive zone and proposed new productive zone. If proposal is to drill or deepen directionally, give pertinent data on subsurface locations and measured and true vertical depths. Give blowout preventer program, if any.)

24. SIGNED [Signature] TITLE Regulatory Affairs DATE 11-29-88

(This space for Federal or State office use)

PERMIT NO. _____

APPROVAL DATE _____

APPROVED
AS AMENDED

APPROVED BY _____

TITLE _____

CONDITIONS OF APPROVAL, IF ANY:

JUN 16 1989

AREA MANAGER

*See Instructions On Reverse Side

All distances must be from the outer boundaries of the Section.

Operator El Paso Natural Gas		Lease Allison Unit (SF-081155)		Well No. 113	
Unit Letter M	Section 19	Township 32 North	Range 6 West	County San Juan	
Actual Footage Location of Wells 820 feet from the South line and 600 feet from the West line					
Ground Level Elev. 6437'	Producing Formation Fruitland Coal		Pool Basin	Dedicated Acreage: 320	

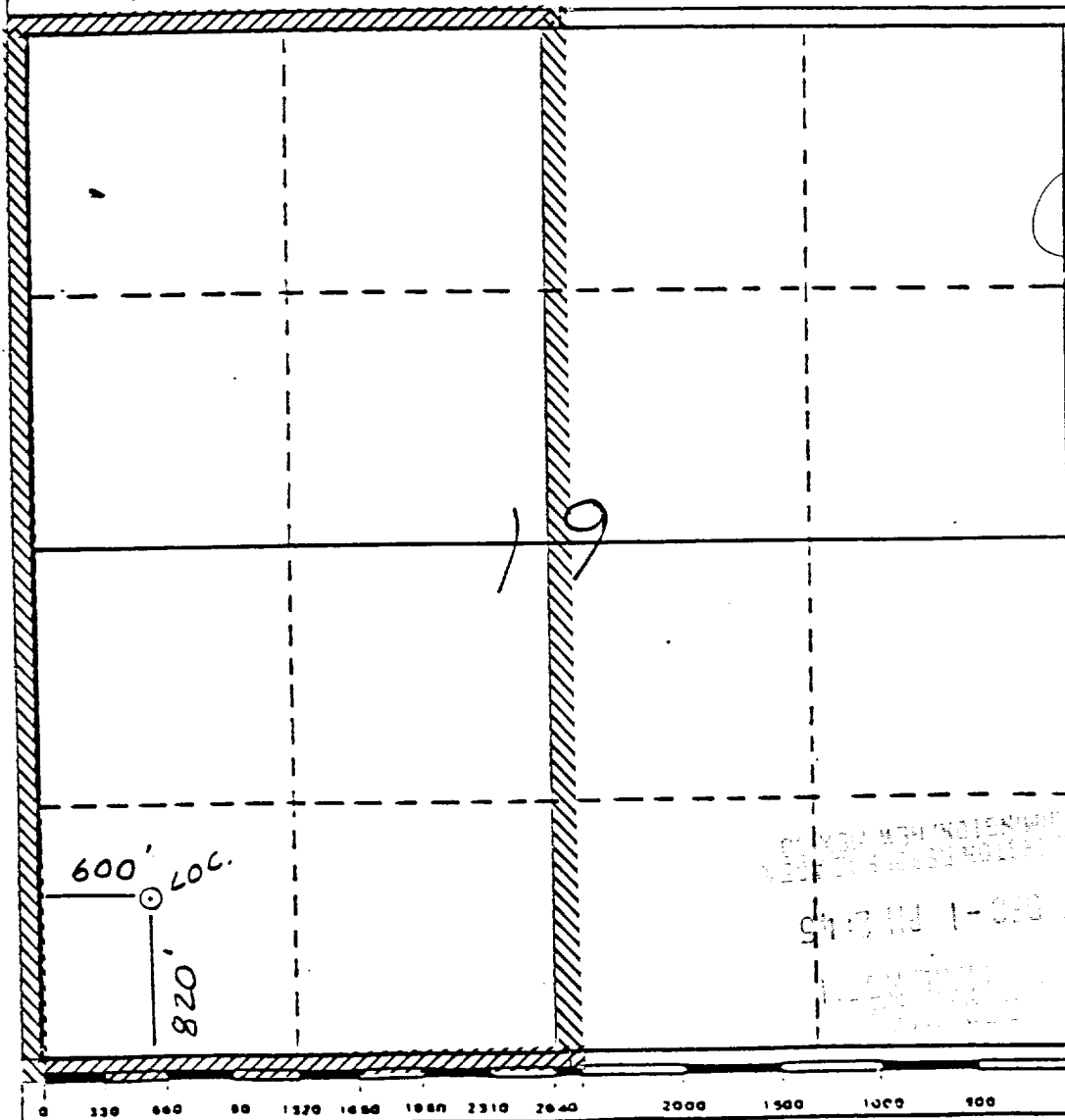
1. Outline the acreage dedicated to the subject well by colored pencil or hachure marks on the plat below.
2. If more than one lease is dedicated to the well, outline each and identify the ownership thereof (both as to working interest and royalty).
3. If more than one lease of different ownership is dedicated to the well, have the interests of all owners been consolidated by communitization, unitization, force-pooling, etc?

☒ Yes ☐ No If answer is "yes," type of consolidation unitization

If answer is "no," list the owners and tract descriptions which have actually been consolidated. (Use reverse side of this form if necessary.)

No allowable will be assigned to the well until all interests have been consolidated (by communitization, unitization, forced-pooling, or otherwise) or until a non-standard unit, eliminating such interests, has been approved by the Division.

* Non-standard due to archeology. Note: reissued to show moved location



CERTIFICATION

I hereby certify that the information contained herein is true and complete to the best of my knowledge and belief.

Neale C. Edwards

Name
Regulatory Affairs

Position
El Paso Natural Gas

Company
11-30-88

Date

I hereby certify that the location shown on this plat was plotted from notes of actual surveys made by me under my supervision, and that the same is true and correct to the best of my knowledge and belief.

Neale C. Edwards

Date Surveyed
11-17-88

Registered Professional Engineer
and/or Land Surveyor

Neale C. Edwards

Certificate No.
6857

Topographic map of the Allison Unit #113 area. The map features contour lines indicating elevation, with labels such as 5500, 5600, 5700, 5800, 5900, 6000, 6100, 6200, 6300, 6400, 6500, 6600, 6700, 6800, 6900, 7000, 7100, 7200, 7300, 7400, 7500, 7600, 7700, 7800, 7900, 8000, 8100, 8200, 8300, 8400, 8500, 8600, 8700, 8800, 8900, 9000, 9100, 9200, 9300, 9400, 9500, 9600, 9700, 9800, 9900, 10000. A pipeline is shown running horizontally across the middle of the map. Handwritten labels include 'T-32-N', 'R-6-W', and 'ALLISON UNIT #113'. The map is bordered by 'LA PLATA CO' and 'ARCHULETA CO' at the top. A scale bar at the top left indicates '0 1 2 3 4 5 6 7 8 9 10' miles. A north arrow is located in the upper left corner. The map is titled 'ALLISON UNIT #113' in the center.