

UNITED STATES
DEPARTMENT OF THE INTERIOR
BUREAU OF LAND MANAGEMENT

(Other instructions on
reverse side)

Budget Bureau No. 1004-0130
Expires August 31, 1985
30-045-27746

APPLICATION FOR PERMIT TO DRILL, DEEPEN, OR PLUG BACK

TYPE OF WORK
DRILL DEEPEN PLUG BACK

TYPE OF WELL
OIL WELL GAS WELL OTHER
SINGLE ZONE MULTIPLE ZONE

NAME OF OPERATOR
Phillips Petroleum Company

ADDRESS OF OPERATOR
300 W. Arrington, Suite 200, Farmington, N.M. 87401

LOCATION OF WELL (Report location clearly and in accordance with any State requirements.)*
At surface Unit B, 1200' FNL & 1440' FEL

At proposed prod. zone Unit B, 1200' FNL & 1440' FEL

DISTANCE IN MILES AND DIRECTION FROM NEAREST TOWN OR POST OFFICE*
20 Miles East From Bondad

DISTANCE FROM PROPOSED* LOCATION TO NEAREST PROPERTY OR LEASE LINE, FT. (Also to nearest drig. unit line, if any)
6600' FSL of 32-7 Unit

DISTANCE FROM PROPOSED LOCATION* TO NEAREST WELL, DRILLING, COMPLETED, OR APPLIED FOR, ON THIS LEASE, FT.
223' SE from #46

ELEVATIONS (Show whether DP, RT, GP, etc.)
6737' (GL Unprepared)

5. LEASE DESIGNATION AND SERIAL NO.
SF-078542
6. IF INDIAN, ALLOTTEE OR TRIBE NAME
7. UNIT AGREEMENT NAME
San Juan 32-7 Unit
8. FARM OR LEASE NAME
9. WELL NO.
208
10. FIELD AND POOL, OR WILDCAT
Basin Fruitland Coal Gas
11. SEC. T. R. M., OR BLK. AND SURVEY OR AREA
B
Sec. 34, T-32 -N, R-7 -W
12. COUNTY OR PARISH
San Juan
13. STATE
N.M.

DISTANCE FROM PROPOSED* LOCATION TO NEAREST PROPERTY OR LEASE LINE, FT. (Also to nearest drig. unit line, if any)
6600' FSL of 32-7 Unit

DISTANCE FROM PROPOSED LOCATION* TO NEAREST WELL, DRILLING, COMPLETED, OR APPLIED FOR, ON THIS LEASE, FT.
223' SE from #46

ELEVATIONS (Show whether DP, RT, GP, etc.)
6737' (GL Unprepared)

16. NO. OF ACRES IN LEASE
960 Ac

17. NO. OF ACRES ASSIGNED TO THIS WELL
320 Ac E/2 of Section

20. ROTARY OR CABLE TOOLS
Rotary

22. APPROX. DATE WORK WILL START*
Upon Approval

SIZE OF HOLE	SIZE OF CASING	WEIGHT PER FOOT	SETTING DEPTH	GENERAL QUANTITIES OF CEMENT
12-1/4"	9-5/8"	36#, K-55	250'	200 sxs, Circ to Surface
8-1/2"	7"	23#, K-55	3366'	600 sxs, Circ to Surface
6-1/8"	5-1/2"	15.5# or 23#	3266'-3520'	*

*If the coal is cleated a 5-1/2", 23#, P-110 liner will be run in the open hole without being cemented.

*If the coal is not cleated a 5-1/2", 15.5#, K-55 liner will be run, cemented with sxs cement and the well fractured.

RECEIVED
APR 23 1990
OIL CON. DIV.
DIST. 3

RECEIVED
APR 18 1990
OIL CON. DIV.
DIST. 3

Mud Program and BOP Equipment: See Attached

ABOVE SPACE DESCRIBE PROPOSED PROGRAM: If proposal is to deepen or plug back, give data on present productive zone and proposed new productive zone. If proposal is to drill or deepen directionally, give pertinent data on subsurface locations and measured and true vertical depth. Give blowout reventer program, if any.

SIGNED L.M. Sanders TITLE Supv. Regulatory Affairs DATE March 15, 1990

(This space for Federal or State office use)

PERMIT NO. _____ APPROVAL DATE _____

APPROVED BY _____ TITLE _____ DATE APR 16 1990

CONDITIONS OF APPROVAL, IF ANY: _____
NMOC D
AREA MANAGER

Submit to Appropriate District Office
State Lease - 4 copies
Fee Lease - 3 copies

State of New Mexico
Energy, Minerals and Natural Resources Department

Form C-102
Revised 1-1-89

OIL CONSERVATION DIVISION

P.O. Box 2088
Santa Fe, New Mexico 87504-2088

DISTRICT I
P.O. Box 1980, Hobbs, NM 88240

DISTRICT II
P.O. Drawer DD, Artesia, NM 88210

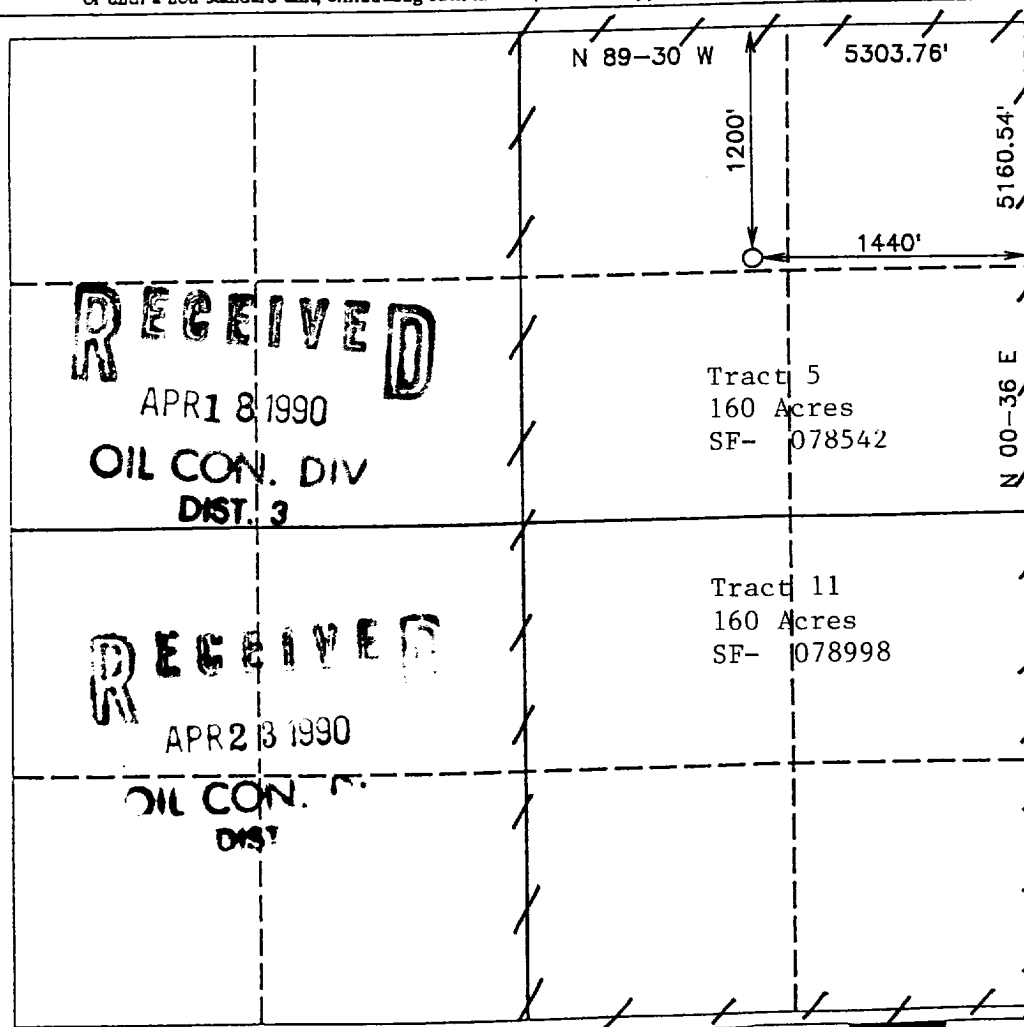
DISTRICT III
1000 Rio Brazos Rd., Aztec, NM 87410

WELL LOCATION AND ACREAGE DEDICATION PLAT
All Distances must be from the outer boundaries of the section

SANTA FE, NEW MEXICO

Operator PHILLIPS PETROLEUM			Lease SAN JUAN 32-7 UNIT		Well No. 208
Unit Letter B	Section 34	Township T.32 N.	Range R.7 W.	County SAN JUAN COUNTY	
Actual Footage Location of Well: 1200 feet from the NORTH line and 1440 feet from the EAST line					
Ground level Elev. 6737	Producing Formation Fruitland		Pool Basin Fruitland Coal Gas		Dedicated Acreage: 320 Acres

- Outline the acreage dedicated to the subject well by colored pencil or hatchure marks on the plat below.
- If more than one lease is dedicated to the well, outline each and identify the ownership thereof (both as to working interest and royalty).
- If more than one lease of different ownership is dedicated to the well, have the interest of all owners been consolidated by communitization, unitization, force-pooling, etc.?
 - Yes No If answer is "yes" type of consolidation Unitized
 If answer is "no" list the owners and tract descriptions which have actually been consolidated. (Use reverse side of this form if necessary.)
 No allowable will be assigned to the well until all interests have been consolidated (by communitization, unitization, forced-pooling, or otherwise) or until a non-standard unit, eliminating such interest, has been approved by the Division.



RECEIVED
APR 18 1990
OIL CON. DIV
DIST. 3

RECEIVED
APR 23 1990
OIL CON. DIV
DIST. 3

OPERATOR CERTIFICATION
I hereby certify that the information contained herein is true and complete to the best of my knowledge and belief.

Signature: *L.M. Sanders*
Printed Name: **L. M. Sanders**
Position: **Supv. Regulatory Affairs**
Company: **Phillips Petroleum Co.**
Date: **March 15, 1990**

SURVEYOR CERTIFICATION
I hereby certify that the well location shown on this plat was plotted from field notes of actual surveys made by me or under my supervision, and that the same is true and correct to the best of my knowledge and belief.

Date Surveyed: **DECEMBER 12, 1989**
Signature & Seal of Professional Surveyor: *R. Howard Daggett*
R. HOWARD DAGGETT
Professional Surveyor
Certificate No. Land Surveyor: **9679**

