

UNITED STATES
DEPARTMENT OF THE INTERIOR
BUREAU OF LAND MANAGEMENT

APPLICATION FOR PERMIT TO DRILL, DEEPEN, OR PLUG BACK

1a. TYPE OF WORK

DRILL ☒

DEEPEN ☐

PLUG BACK ☐

b. TYPE OF WELL

OIL
WELL ☐

GAS
WELL ☒

OTHER

SINGLE
ZONE ☒

MULTIPLE
ZONE ☐

2. NAME OF OPERATOR

MESA OPERATING LIMITED PARTNERSHIP

3. ADDRESS OF OPERATOR

P.O. BOX 2009, AMARILLO, TEXAS 79189

4. LOCATION OF WELL (Report location clearly and in accordance with any State requirements)

At surface

1870' FSL/1525' FWL

At proposed prod. zone

14. DISTANCE IN MILES AND DIRECTION FROM NEAREST TOWN OR POST OFFICE*

12 miles N/NW of Aztec, New Mexico

15. DISTANCE FROM PROPOSED*

LOCATION TO NEAREST
PROPERTY OR LEASE LINE, FT.
(Also to nearest drlg. unit line, if any)

550'/1115'

16. NO. OF ACRES IN LEASE

983.65

17. NO. OF ACRES ASSIGNED
TO THIS WELL

W/2 320 acres

18. DISTANCE FROM PROPOSED LOCATION*

TO NEAREST WELL, DRILLING, COMPLETED,
OR APPLIED FOR, ON THIS LEASE, FT.

223

19. PROPOSED DEPTH

3230'

20. ROTARY OR CABLE TOOLS

Rotary

21. ELEVATIONS (Show whether DF, RT, GR, etc.)

6615' GR

DRILLING OPERATIONS AUTHORIZED ARE
SUBJECT TO COMPLIANCE WITH ATTACHED

22. APPROX. DATE WORK WILL START*

December 11, 1989

23. PROPOSED CASING AND CEMENTING PROGRAM

This section is subject to technical and
procedural review pursuant to 43 CFR 3105.3
and appeal pursuant to 43 CFR 3105.4.

SIZE OF HOLE	SIZE OF CASING	WEIGHT PER FOOT	SETTING DEPTH	QUANTITY OF CEMENT
12 1/4"	8 5/8"	24#	200'	150 sx 'B' +2% CACL (Surface)
7 7/8"	5 1/2"	17#	3230'	400 sx Poz/300 'B' (Surface)

Propose to spud well with 12 1/4" hole and drill to 200' and set 8 5/8" surface casing. Will cement with 150 sx of Class "B" and raise cement to surface. Will nipple up 2000 psi BOP assembly and drill 7 7/8" hole to TD of + 3230' with fresh water mud system. Will then log well and evaluate for possible commercial production. If successful, will then run 5 1/2" casing to + 3230' and cement with 400 sx Pozmix followed by 300 sx Class "B" cement. Will move off drilling rig and move in completion unit.

xc: BLM-Farmington (0+5), NMOCD-Aztec (1), WF, Reg, Land, Expl., Drilling

IN ABOVE SPACE DESCRIBE PROPOSED PROGRAM: If proposal is to deepen or plug back, give data on present productive zone and proposed new productive zone. If proposal is to drill or deepen directionally, give pertinent data on subsurface locations and measured and true vertical depths. Give blowout preventer program, if any.

24.

SIGNED

R. E. Machis

TITLE

Regulatory Agent

DATE

10/10/89

(This space for Federal or State office use)

PERMIT NO.

APPROVAL DATE

APPROVED BY

TITLE

DATE

CONDITIONS OF APPROVAL, IF ANY:

MAY 24 1990

Ken Townsend

FOR AREA MANAGER

*See Instructions On Reverse Side

OIL CONSERVATION DIVISION

P.O. Box 2088

Santa Fe, New Mexico 87504-2088

DISTRICT I

P.O. Box 1980, Hobbs, NM 88240

DISTRICT II

P.O. Drawer DD, Artesia, NM 88210

DISTRICT III

1000 Rio Brazos Rd., Aztec, NM 87410

WELL LOCATION AND ACREAGE DEDICATION PLAT

All Distances must be from the outer boundaries of the section

Operator MESA OPERATING LIMITED PARTNERSHIP			Lease FC FEDERAL COM		Well No. 8
Unit Letter K	Section 18	Township 32 N	Range 11 W	County San Juan	
Actual Footage Location of Well: 1870 feet from the South line and 1525 feet from the West line					
Ground level Elev. 6615	Producing Formation Fruitland Coal		Pool Undesignated Basin Fruitland Coal		Dedicated Acreage: W/2 320 3/4 Acres

1. Outline the acreage dedicated to the subject well by colored pencil or hatchure marks on the plat below.

2. If more than one lease is dedicated to the well, outline each and identify the ownership thereof (both as to working interest and royalty).

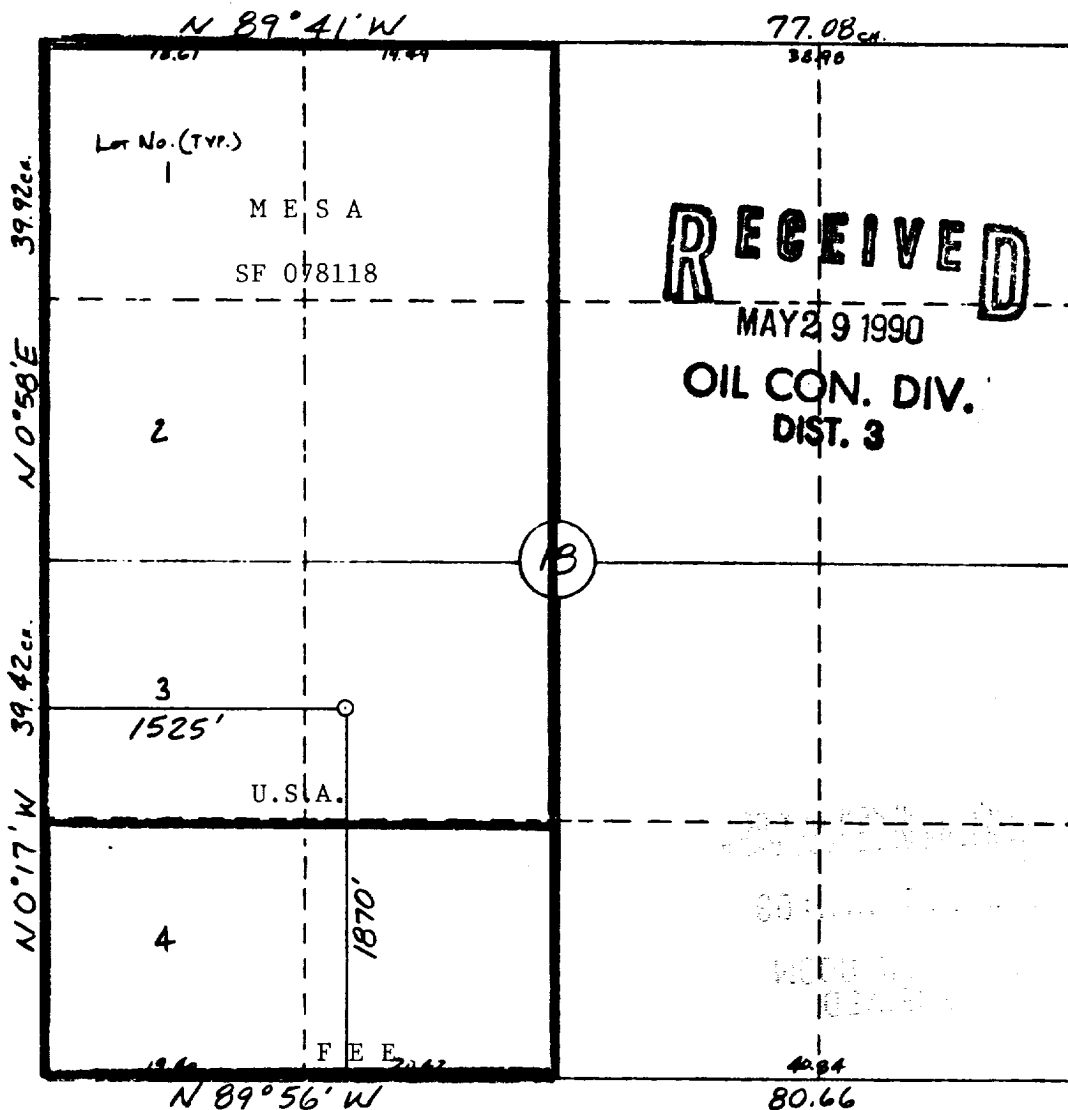
3. If more than one lease of different ownership is dedicated to the well, have the interest of all owners been consolidated by communitization, unitization, force-pooling, etc.?

☒ Yes ☐ No If answer is "yes" type of consolidation Communitization

If answer is "no" list the owners and tract descriptions which have actually been consolidated. (Use reverse side of this form if necessary.)

No allowable will be assigned to the well until all interests have been consolidated (by communitization, unitization, forced-pooling, or otherwise) or until a non-standard unit, eliminating such interest, has been approved by the Division.

330 660 990 1320 1650 1980 2310 2640 2000 1600 1000 500 0



OPERATOR CERTIFICATION

I hereby certify that the information contained herein is true and complete to the best of my knowledge and belief.

Signature

R. E. Mathis

Printed Name

R. E. Mathis

Position

Regulatory Agent

Company

Mesa Operating Ltd Partnership

Date

10/10/89

SURVEYOR CERTIFICATION

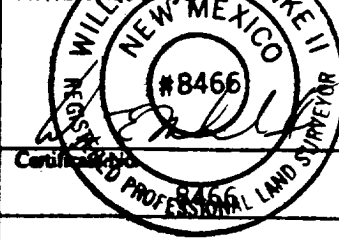
I hereby certify that the well location shown on this plat was plotted from field notes of actual surveys made by me or under my supervision, and that the same is true and correct to the best of my knowledge and belief.

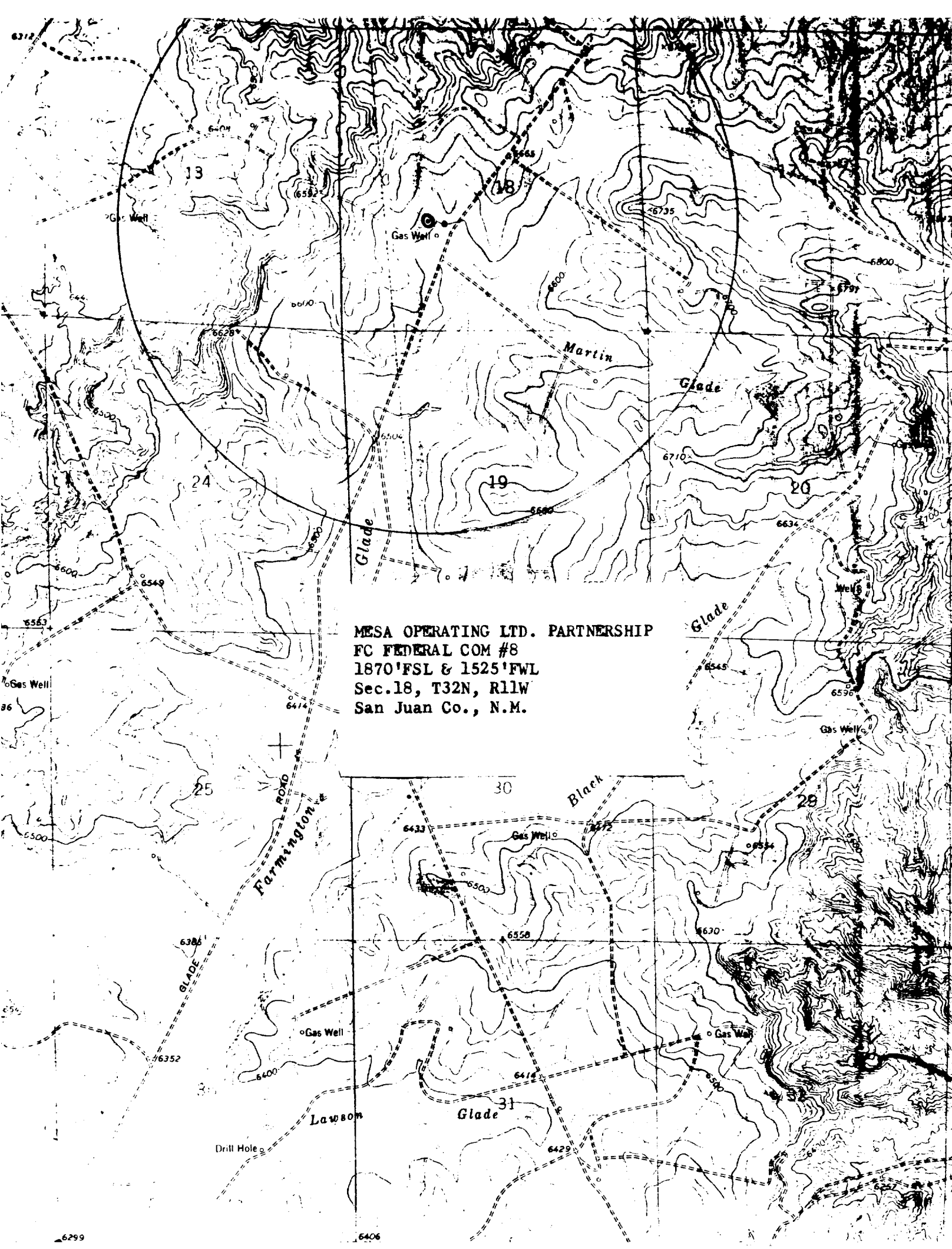
9-26-89

Date Surveyed

William E. Mahnke II

Signature of S. M. E. MAHNKE II
Professional Land Surveyor





MESA OPERATING LTD. PARTNERSHIP
FC FEDERAL COM #8
1870'FSL & 1525'FWL
Sec.18, T32N, R11W
San Juan Co., N.M.