

Submit to Appropriate
District Office
State Lease - 6 copies
Fee Lease - 5 copies

State of New Mexico
Energy, Minerals and Natural Resources Department

Form C-101
Revised 1-1-89

OIL CONSERVATION DIVISION

DISTRICT I
P.O. Box 1980, Hobbs, NM 88240

DISTRICT II
P.O. Drawer DD, Artesia, NM 88210

DISTRICT III
1000 Rio Brazos Rd., Aztec, NM 87410

P.O. Box 2088
Santa Fe, New Mexico 87502-2088

AUG 14 1991

API NO. (assigned by OCD on New Wells)

30-145-28582 ✓

5. Indicate Type of Lease

STATE ☐

FEE ☒

6. State Oil & Gas Lease No.
Fee

APPLICATION FOR PERMIT TO DRILL OIL OR GAS PLUG BACK

1a. Type of Work:

DRILL ☒

RE-ENTER ☐

DEEPEN ☐

PLUG BACK ☐

b. Type of Well:

OIL
WELL ☐

GAS
WELL ☒

OTHER ☐

SINGLE
ZONE ☒

MULTIPLE
ZONE ☐

7. Lease Name or Unit Agreement Name

Allison Unit

2. Name of Operator

Meridian Oil Inc.

8. Well No.

67 ✓

3. Address of Operator

PO Box 4289, Farmington, NM 87499

9. Pool name or Wildcat

Blanco Mesa Verde ✓

4. Well Location

Unit Letter 0 : 1045 Feet From The South Line and 1475 Feet From The East Line

Section 11 Township 32 Range 7 NMPM San Juan County

10. Proposed Depth

6250'

11. Formation

Mesa Verde

12. Rotary or C.T.

Rotary

13. Elevations (Show whether DF, RT, GR, etc.)

6580' GL ✓

14. Kind & Status Plug. Bond

statewide

15. Drilling Contractor

16. Approx. Date Work will start

17. PROPOSED CASING AND CEMENT PROGRAM

377.66 ✓

SIZE OF HOLE	SIZE OF CASING	WEIGHT PER FOOT	SETTING DEPTH	SACKS OF CEMENT	EST. TOP
12 1/4"	9 5/8"	36.0#	0- 500'	400 sx	surface
8 3/4"	7"	23.0#	0-3650'	760 sx	surface
6 1/4"	4 1/2"	10.5#	3500-6250'	380 sx	3500'

The Mesa Verde formation will be completed.

A 2000 psi minimum WP double gate preventer equipped with blind and pipe rams will be used for blow out prevention on this well.

This gas is dedicated.

Lots 2, 5, 6, 7, W/2 SE/4 and the SW/4 of Section 11 are dedicated to this well.

IN ABOVE SPACE DESCRIBE PROPOSED PROGRAM: IF PROPOSAL IS TO DEEPEN OR PLUG BACK, GIVE DATA ON PRESENT PRODUCTIVE ZONE AND PROPOSED NEW PRODUCTIVE ZONE. GIVE BLOWOUT PREVENTER PROGRAM, IF ANY.

I hereby certify that the information above is true and complete to the best of my knowledge and belief.

SIGNATURE

J. W. Caldwell

Regional Drlg. Engineer

DATE 8-1-91

TYPE OR PRINT NAME

J. W. Caldwell

TELEPHONE NO. 326-9701

(This space for State Use)

APPROVED BY

DEPUTY OIL & GAS INSPECTOR, DIST. #3

DATE

8-16-91

CONDITIONS OF APPROVAL, IF ANY:

Hold C-104 for NSF R-2717

APPROVAL EXPIRES 2-16-92
UNLESS DRILLING IS COMMENCED.
SPUD NOTICE MUST BE SUBMITTED
WITHIN 10 DAYS.

AUG 16 1991

Submit to Appropriate
District Office
State Lease - 4 copies
Fee Lease - 3 copies

State of New Mexico
Energy, Minerals and Natural Resources Department

OIL CONSERVATION DIVISION

P.O. Box 2088
Santa Fe, New Mexico 87504-2088

Form C-102
Revised 1-1-89

RECEIVED

AUG 14 1991

OIL CON. DIV.
DIST. 3

DISTRICT I
P.O. Box 1980, Hobbs, NM 88240

DISTRICT II
P.O. Drawer DD, Artesia, NM 88210

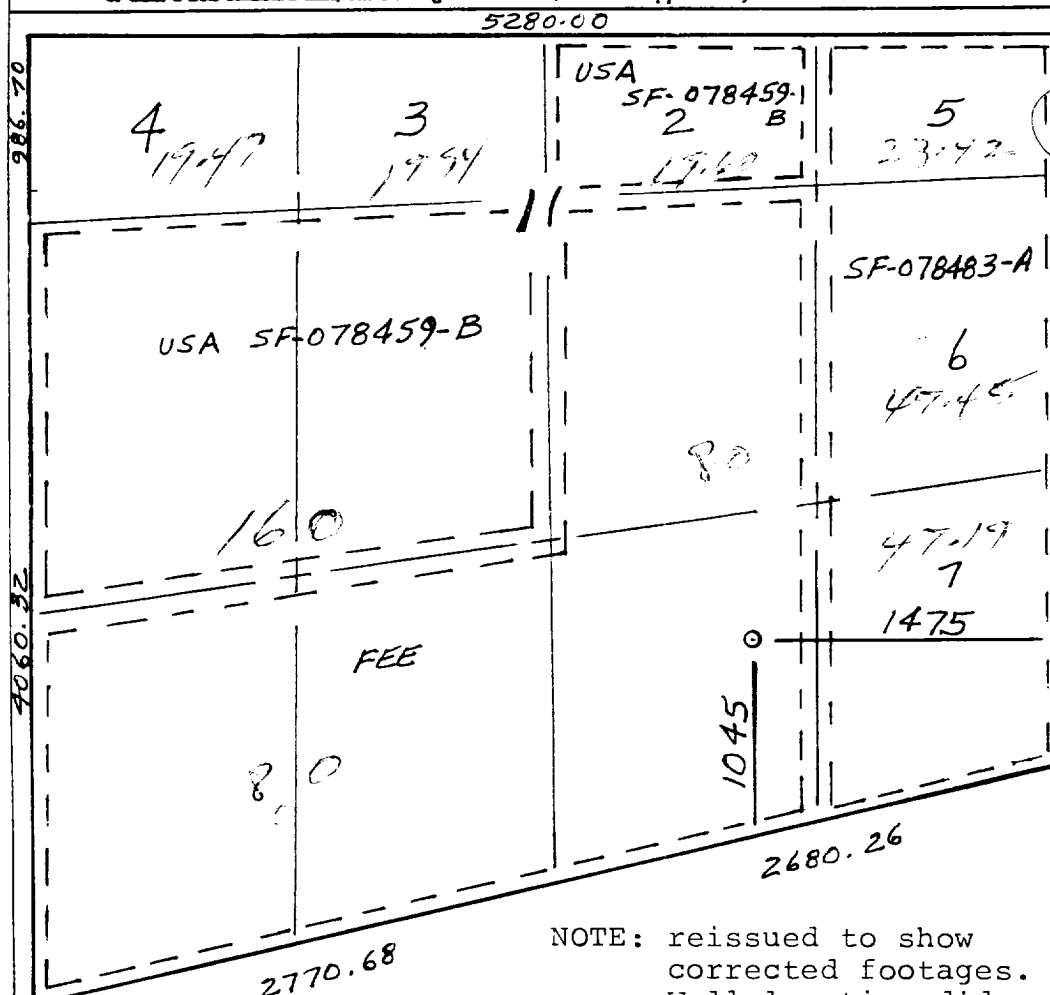
DISTRICT III
1000 Rio Brazos Rd., Aztec, NM 87410

WELL LOCATION AND ACREAGE DEDICATION PLAT

All Distances must be from the outer boundaries of the section

Operator Meridian Oil Inc.		Lease Allison Unit		Well No. 67
Unit Letter 0	Section 11	Township 32 North	Range 7 West	County San Juan
Actual Footage Location of Well: 1045 feet from the South line and 1475 feet from the East line				
Ground level Elev. 6580	Producing Formation Mesa Verde	Pool Blanco	Dedicated Acreage: 377.66 Acres	

- Outline the acreage dedicated to the subject well by colored pencil or hatchure marks on the plat below.
- If more than one lease is dedicated to the well, outline each and identify the ownership thereof (both as to working interest and royalty).
- If more than one lease of different ownership is dedicated to the well, have the interest of all owners been consolidated by communitization, unitization, force-pooling, etc.?
☒ Yes ☐ No If answer is "yes" type of consolidation unitization
If answer is "no" list the owners and tract descriptions which have actually been consolidated. (Use reverse side of this form if necessary.)
No allowable will be assigned to the well until all interests have been consolidated (by communitization, unitization, forced-pooling, or otherwise) or until a non-standard unit, eliminating such interest, has been approved by the Division.



NOTE: reissued to show
corrected footages.
Well location did not
move.

OPERATOR CERTIFICATION

I hereby certify that the information
contained herein is true and complete to the
best of my knowledge and belief.

Signature
Peggy Bradfield
Printed Name
Regulatory Affairs
Position
Meridian Oil Inc.
Company
Date
8-14-91

SURVEYOR CERTIFICATION

I hereby certify that the well location shown
on this plat was plotted from field notes of
actual surveys made by me or under my
supervision, and that the same is true and
correct to the best of my knowledge and
belief. 3-14-91

Date Surveyed
Signature
Professional Surveyor
NEALE, G. EDWARDS
6857
REGISTERED LAND SURVEYOR
Neale G. Edwards