

UNITED STATES
DEPARTMENT OF THE INTERIOR
BUREAU OF LAND MANAGEMENT

SUBMIT IN TRIPLICATE*
(Other instructions on
reverse side)

30-045-21635
Form approved.
Budget Bureau No. 1004-0136
Expires August 31, 1985

APPLICATION FOR PERMIT TO DRILL, DEEPEN, OR PLUG BACK

1a. TYPE OF WORK
DRILL ☒ DEEPEN ☐ PLUG BACK ☐
b. TYPE OF WELL
OIL WELL ☒ GAS WELL ☐ OTHER ☐
2. NAME OF OPERATOR
Vantage Point Operating Co. (918) 664-2100
3. ADDRESS OF OPERATOR
5801 E. 41 St., Suite 1001, Tulsa, Ok. 74135
4. LOCATION OF WELL (Report location clearly and in accordance with any State requirements.)*
At surface
1840' FNL & 645' FEL (SENE)
At proposed prod. zone
Same
14. DISTANCE IN MILES AND DIRECTION FROM NEAREST TOWN OR POST OFFICE*
9 air miles NE of Shiprock, NM
10. DISTANCE FROM PROPOSED*
LOCATION TO NEAREST
PROPERTY OR LEASE LINE, FT.
(Also to nearest drlg. unit line, if any) 800'
18. DISTANCE FROM PROPOSED LOCATION*
TO NEAREST WELL, DRILLING, COMPLETED,
OR APPLIED FOR, ON THIS LEASE, FT. 1,181'
16. NO. OF ACRES IN LEASE 1,760
17. NO. OF ACRES ASSIGNED
TO THIS WELL 40
19. PROPOSED DEPTH 1,650'
20. ROTARY OR CABLE TOOLS Rotary
21. ELEVATIONS (Show whether DF, RT, GR, etc.)
5,902' ungraded ground

5. LEASE DESIGNATION AND SERIAL NO.
14-20-603-2022
6. IF INDIAN, ALLOTTEE OR TRIBE NAME
Navajo
7. UNIT AGREEMENT NAME
Horseshoe Gallup
8. NAME OF LEASE NAME
Horseshoe Gallup Unit
9. WELL NO.
*303
10. FIELD AND POOL, OR WILDCAT
Horseshoe Gallup
11. SEC., T., R., M., OR BLK.
AND SURVEY OR AREA
23-31n-17w NMPM
12. COUNTY OR PARISH
San Juan
13. STATE
NM

This action is subject to technical and
procedural review pursuant to 43 CFR 3165.5
and appeal pursuant to 43 CFR 3165.4.

PROPOSED CASING AND CEMENTING PROGRAM

SIZE OF HOLE	SIZE OF CASING	WEIGHT PER FOOT	SETTING DEPTH	QUANTITY OF CEMENT
12-1/4"	8-5/8"	24" (K-55, ST&C)	120'	~103 cu ft or to surface
7-7/8"	5-1/2"	14" (K-55, ST&C)	1,650'	~138 cu ft or to 1,200'

See attached

RECEIVED

NOV 4 1991

OIL CON. DIV. I
DIST. 3

IN ABOVE SPACE DESCRIBE PROPOSED PROGRAM: If proposal is to deepen or plug back, give data on present productive zone and proposed new productive zone. If proposal is to drill or deepen directionally, give pertinent data on subsurface locations and measured and true vertical depths. Give blowout preventer program, if any.

SIGNED Brian Wood TITLE Consultant DATE 8-26-91
(This space for Federal or State office use)

cc: BIA, BLM(6), Des, Usellon, Yeckley(Z)

PERMIT NO. _____ APPROVAL DATE _____

APPROVED BY _____ TITLE _____
CONDITIONS OF APPROVAL, IF ANY:

APPROVED
AS AMENDED

NOV 30 1991

AREA MANAGER

*See Instructions On Reverse Side

Submit to Appropriate
District Office
State Lease - 4 copies
Fee Lease - 3 copies

State of New Mexico
Energy, Minerals and Natural Resources Department

Form C-102
Revised 1-1-89

OIL CONSERVATION DIVISION

P.O. Box 2088
Santa Fe, New Mexico 87504-2088

DISTRICT I
P.O. Box 1980, Hobbs, NM 88240

DISTRICT II
P.O. Drawer DD, Artesia, NM 88210

DISTRICT III
1000 Rio Brazos Rd., Aztec, NM 87410

WELL LOCATION AND ACREAGE DEDICATION PLAT

All Distances must be from the outer boundaries of the section

Operator VANTAGE POINT OPERATING Co.			Lease Horseshoe Gallup Unit		Well No. 303
Unit Letter H	Section 23	Township 31 N.	Range 17 W.	County San Juan	
Actual Footage Location of Well: 1840 feet from the North line and 645 feet from the East line					
Ground level Elev. 5902'	Producing Formation Gallup		Pool Horseshoe Gallup		Dedicated Acreage: 40 Acres

1. Outline the acreage dedicated to the subject well by colored pencil or hatchure marks on the plat below.
2. If more than one lease is dedicated to the well, outline each and identify the ownership thereof (both as to working interest and royalty).
3. If more than one lease of different ownership is dedicated to the well, have the interest of all owners been consolidated by communization, unitization, force-pooling, etc.?
☐ Yes ☐ No If answer is "yes" type of consolidation _____
If answer is "no" list the owners and tract descriptions which have actually been consolidated. (Use reverse side of this form if necessary.) _____
No allowable will be assigned to the well until all interests have been consolidated (by communization, unitization, forced-pooling, or otherwise) or until a non-standard unit, eliminating such interests, has been approved by the Division.

OPERATOR CERTIFICATION

I hereby certify that the information contained herein is true and complete to the best of my knowledge and belief.

Signature Brian Wood

Printed Name Brian Wood

Position Consultant

Company Vantage Point Operating Co.

Date August 26, 1991

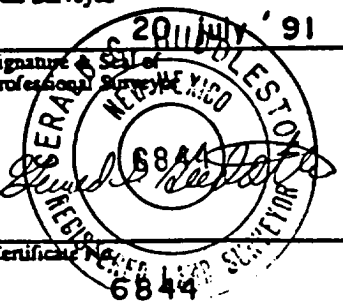
SURVEYOR CERTIFICATION

I hereby certify that the well location shown on this plat was plotted from field notes, actual surveys made by me or under supervision, and that the same is true correct to the best of my knowledge and belief.

Date Surveyed 20 JULY '91

Signature of Professional Surveyor [Signature]

Certificate No. 6844



UNITED STATES
DEPARTMENT OF THE INTERIOR
BUREAU OF LAND MANAGEMENT

APPLICATION FOR PERMIT TO DRILL, DEEPEN, OR PLUG BACK

1a. TYPE OF WORK

DRILL ☒

DEEPEN ☐

PLUG BACK ☐

b. TYPE OF WELL

OIL
WELL ☒

GAS
WELL ☐

OTHER ☐

SINGULAR
ZONE ☒

MULTIPLE
ZONE ☐

2. NAME OF OPERATOR

Vantage Point Operating Co. (918) 664-2100

3. ADDRESS OF OPERATOR

5801 E. 41 St., Suite 1001, Tulsa, Ok. 74135

4. LOCATION OF WELL (Report location clearly and in accordance with any State requirements:*)

At surface

1840' FNL & 645' FEL (SENE)

At proposed prod. zone

Same

14. DISTANCE IN MILES AND DIRECTION FROM NEAREST TOWN OR POST OFFICE*

9 air miles NE of Shiprock, NM

15. DISTANCE FROM PROPOSED*

LOCATION TO NEAREST
PROPERTY OR LEASE LINE, FT.
(Also to nearest drig. unit line, if any)

800'

16. NO. OF ACRES IN LEASE

1,760

17. NO. OF ACRES ASSIGNED
TO THIS WELL

40

18. DISTANCE FROM PROPOSED LOCATION*

TO NEAREST WELL, DRILLING, COMPLETED,
OR APPLIED FOR, ON THIS LEASE, FT.

1,181'

19. PROPOSED DEPTH

1,650'

20. ROTARY OR CABLE TOOL

Rotary

21. ELEVATIONS (Show whether DF, RT, GR, etc.)

5,902' ungraded ground

22. APPROX. DATE WORK WILL START*

Nov. 15 1991

23.

PROPOSED CASING AND CEMENTING PROGRAM

SIZE OF HOLE	SIZE OF CASING	WEIGHT PER FOOT	SETTING DEPTH	QUANTITY OF CEMENT
12-1/4"	8-5/8"	24* (K-55, ST&C)	120'	*103 cu ft or to surface
7-7/8"	5-1/2"	14*(K-55, ST&C)	1,650'	432 cu ft or to surface

This APD has been altered to reflect a revision in the cementing program. The production casing will be cemented to surface with approx. 167 sx. Lite cmt. w/6% gel, (328 cu. ft. with a yield of 1.97 cu. ft. per sx. and a specific gravity of 12.3 ppg) followed by 86 sx. Class 'B' cmt. w/ 3.0% salt, (104 cu. ft. with a yield of 1.21 cu. ft. per sx. and a specific gravity of 15.5 ppg). Centralizers will be run every 120 ft. Cement will be preceded with a 500 gallon mudflush. A chronological log will be kept of the cement job.

IN ABOVE SPACE DESCRIBE PROPOSED PROGRAM: If proposal is to deepen or plug back, give data on present productive zone and proposed new productive zone. If proposal is to drill or deepen directionally, give pertinent data on subsurface locations and measured and true vertical depths. Give blowout preventer program, if any.

24.

SIGNED

Jeff L. Pankov

TITLE

Senior Petroleum Engineer

DATE

October 29, 1991

(This space for Federal or State office use)

cc: BIA, BLM(6),

PERMIT NO.

APPROVAL DATE

APPROVED BY

TITLE

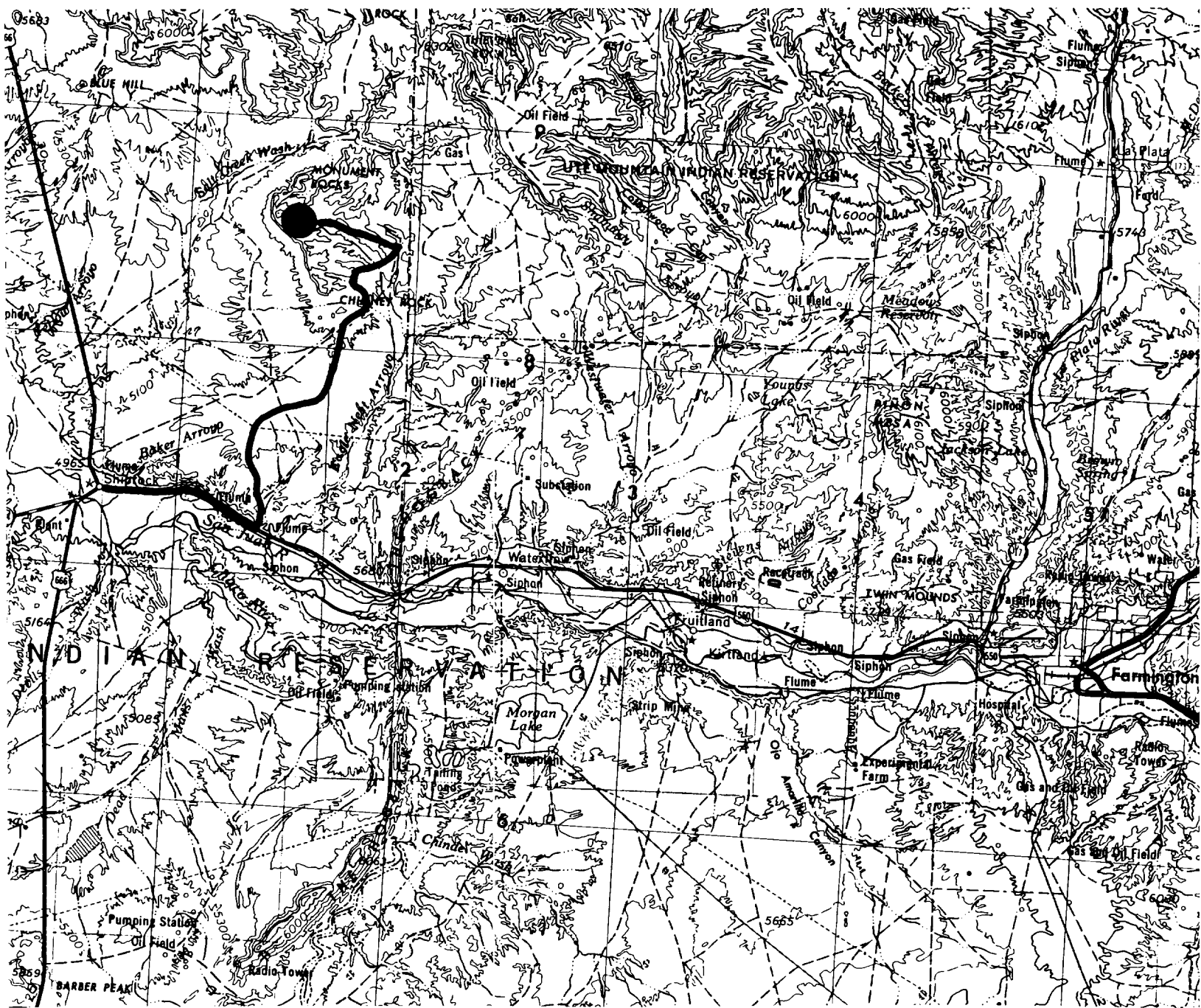
DATE

CONDITIONS OF APPROVAL, IF ANY:

*See Instructions On Reverse Side

Vantage Point Operating Co.
Horseshoe Gallup Unit #303
1840' FNL & 645' FEL
Sec. 23, T. 31 N., R. 17 W.
San Juan County, New Mexico

PAGE 10



PROPOSED WELL: ●

ACCESS ROUTE: ~