

Submit to Appropriate  
District Office  
State Lease - 6 copies  
Fee Lease - 5 copies

State of New Mexico  
Energy, Minerals and Natural Resources Department

Form C-101  
Revised 1-1-89

OIL CONSERVATION DIVISION

P.O. Box 2088  
Santa Fe, New Mexico 87504-2088

DISTRICT I  
P.O. Box 1980, Hobbs, NM 88240

DISTRICT II  
P.O. Drawer DD, Artesia, NM 88210

DISTRICT III  
1000 Rio Brazos Rd., Aztec, NM 87410

API NO. (assigned by OCD on New Wells)

30-045-28794

5. Indicate Type of Lease

STATE ☐

FEE ☒

6. State Oil & Gas Lease No.

APPLICATION FOR PERMIT TO DRILL, DEEPEN, OR PLUG BACK

1a. Type of Work:

DRILL ☒

RE-ENTER ☐

DEEPEN ☐

PLUG BACK ☐

b. Type of Well:

OIL  
WELL ☐

GAS  
WELL ☒

OTHER

SINGLE  
ZONE ☒

MULTIPLE  
ZONE ☐

7. Lease Name or Unit Agreement Name

Kline 10

2. Name of Operator

Hallwood Petroleum, Inc.

8. Well No.

3

3. Address of Operator

P.O. Box 378111 Denver, CO 80237

9. Pool name or Wildcat

Basin Fruitland Coal

4. Well Location

Unit Letter G : 1905 Feet From The North Line and 1594 Feet From The East Line

Section 10 Township 31N Range 13W NMPM San Juan County

10. Proposed Depth

2200

11. Formation

Fruitland Coal

12. Rotary or C.T.

Rotary

13. Elevations (Show whether DF, RT, GR, etc.)

5700 GR

14. Kind & Status Plug. Bond

15. Drilling Contractor

16. Approx. Date Work will start

10/10/92

17.

PROPOSED CASING AND CEMENT PROGRAM

SIZE OF HOLE	SIZE OF CASING	WEIGHT PER FOOT	SETTING DEPTH	SACKS OF CEMENT	EST. TOP
12 1/4	8 5/8	24	350	250	Surface
7 7/8	5 1/2	15.5	2175	350	Surface

Hallwood Petroleum, Inc. proposes to drill a 12 1/4" hole with native mud to 350' and set 8 5/8", 24#, J-55 casing to 350' cementing to surface with 250 sxs Class "B" cement. Drill 7 7/8" hole out of surface casing to 2,200' with mud. Log well. Set 5 1/2", 15.5#, J-55 production casing, to 2,200' cementing to surface with 300 sxs lead cement followed by 50 sxs Class "B" tail cement. Test coal interval through perforations at 1,904' - 1,954'. Fracture stimulate with approximately 200,000#, 12/20 sand, flow to clean up well and put on rod pump with beam unit.

APPROVAL EXPIRES 4-7-93  
UNLESS DRILLING IS COMPLETED  
SPUD NOTICE MUST BE SUBMITTED  
WITHIN 10 DAYS.

RECEIVED  
OCT 07 1992

RECEIVED  
SEP 23 1992

IN ABOVE SPACE DESCRIBE PROPOSED PROGRAM: IF PROPOSAL IS TO DEEPEN OR PLUG BACK, GIVE DATA ON PRESENT PRODUCTIVE ZONE AND PROPOSED NEW PRODUCTIVE ZONE. GIVE BLOWOUT PREVENTER PROGRAM, IF ANY.

OIL CON. DIV.  
DIST. 3

OIL CON. DIV.  
DIST. 3

I hereby certify that the information above is true and complete to the best of my knowledge and belief.

SIGNATURE

Debi Sheely

TITLE Sr. Engineering Technician

DATE Sept. 18, 1992

TYPE OR PRINT NAME Debi Sheely

(303)850-6207 TELEPHONE NO.

(This space for State Use)

APPROVED BY

[Signature]

TITLE

SUPERVISOR DISTRICT # 3

DATE

OCT 07 1992

CONDITIONS OF APPROVAL, IF ANY:

## DRILLING PROGNOSIS

OPERATOR	Hallwood Petroleum, Inc.	DATE	8/03/92
WELL NAME	Kline H #3-10 FC	PREPARED BY	KEO/JMG
LOCATION	NE/4 Section 10-T31N-R13W		
COUNTY	San Juan	STATE	New Mexico
		PROPOSED TD	2,175'

### TUBULAR PROGRAM:

HOLE SIZE	CASING/ TUBING	FROM	TO	SIZE	WEIGHT	GRADE	CPLG
12-1/4"	CSG	0	350	8-5/8"	24#	J-55	STXC
7-7/8"	CSG	0	2,175	5-1/2"	15.50#	J-55	LTXC

### MUD PROGRAM:

TYPE	DEPTH	RHEOLOGY	-	WT	VIS	WL	ETC
Surface hole - Native mud.							
Production hole - Native mud with 45-50 viscosity for logging.							

### CEMENT PROGRAM:

INTERVAL STAGE	EST. SLURRY VOLUME	SLURRY CHARACTERISTICS	EQUIPMENT: DV, SCRATCHER CENTRALIZERS, SHOE, ETC.
Surface Csg.	250 sx	Class "B"	One centralizer on shoe jt.
Production Csg.	300 sx	Lead cemet (65:35) Poz) followed by	
	50 sx	Class "B" tail cement. See info below	
		under "Special Equipment".	

### BIT PROGRAM:

Footage contract, contractors responsibility.

### DRILLING HAZARDS/PRODUCTION PROBLEMS:

Keep mud weight under 9.0 ppg to minimize any chance of lost circulation.

### DEVIATION SURVEYS/PRODUCTION PROBLEMS:

Take Totco's every 500'.

### WELLHEAD:

3000 psi (minimum) required.

### SPECIAL EQUIPMENT/TECHNIQUE:

We plan to try a slotted casing completion technique on this well which will consist of slotted casing across the Fruitland Coal zones and an exterior casing packer at the top of the coal on the casing string with cement to surface. A detailed schematic is attached. Actual tops and depths may vary as drilling progresses.

### SPECIAL PERSONNEL REQUIREMENTS:

None planned.

## HALLWOOD GEOLOGICAL PROGNOSIS

DATE: 8/4/92 TYPE WELL: Fruitland Coal  
WELL NAME: Kline H 3-10 FIELD/LEASE: Basin Fruitland  
LOCATION: NE/4 Section 10, T31N-R13W  
COUNTY: San Juan STATE: New Mexico  
ELEVATION: GR 5,712' KB 5,724' TIGHT HOLE: Yes

<u>Formation</u>	<u>Depth</u>	<u>Datum</u>	<u>Remarks</u>
Fruitland	1,353'	+4,371'	
Pictured Cliffs	1,954'	+3,770'	
Total Depth	2,110'	+3,614	

Samples: 1,750' to TD

Testing/Coring: None

Logging Program: GR, FDC (high resolution)

Known Area Problems: None

Wellsite Geologist/Mudlogger: None planned

Remarks: \_\_\_\_\_

Name	Position	Mobil Phone	Home Phone	Office Phone
Lewis Blaylock-Prod.	Foreman	(505)599-1998	(303)434-6375	(303)259-1404
Jim Bonaventura-Area	Supr.	(505)325-0492	(303)247-9662	(303)259-1374
Kevin O'Connell-Drlg & Prod	Supr.	N/A	(303)838-2192	(303)850-6303
John Genziano - Senior Engineer		N/A	(303)779-4133	(303)850-6223

Submit to Appropriate  
District Office  
State Lease - 4 copies  
Fee Lease - 3 copies

State of New Mexico  
Energy, Minerals and Natural Resources Department

Form C-102  
Revised 1-1-89

OIL CONSERVATION DIVISION

P.O. Box 2088  
Santa Fe, New Mexico 87504-2088

DISTRICT I  
P.O. Box 1980, Hobbs, NM 88240

DISTRICT II  
P.O. Drawer DD, Artesia, NM 88210

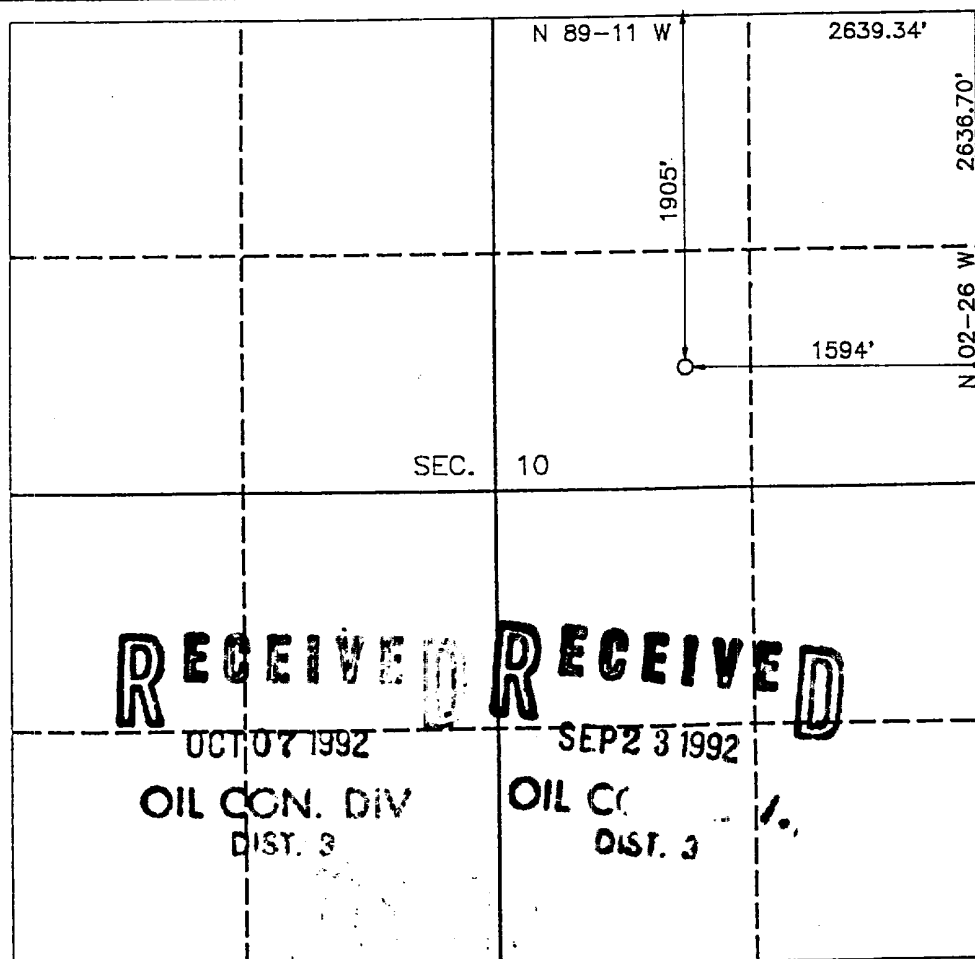
DISTRICT III  
1000 Rio Brazos Rd., Aztec, NM 87410

WELL LOCATION AND ACREAGE DEDICATION PLAT

All Distances must be from the outer boundaries of the section

Operator <b>HALLWOOD PETROLEUM</b>		Lease <b>KLINE 1C</b>		Well No. <b>3-40</b>
Unit Letter <b>G</b>	Section <b>10</b>	Township <b>T.31 N.</b>	Range <b>R.13 W.</b>	County <b>SAN JUAN</b>
Actual Footage Location of Well: <b>1905</b> feet from the <b>NORTH</b> line and <b>1594</b> feet from the <b>EAST</b> line				
Ground level Elev. <b>5700</b>	Producing Formation <b>Int Coal</b>	Pool <b>13-26-70</b>	Dedicated Acreage: <b>320</b> Acres	

- Outline the acreage dedicated to the subject well by colored pencil or hatchure marks on the plat below.
- If more than one lease is dedicated to the well, outline each and identify the ownership thereof (both as to working interest and royalty).
- If more than one lease of different ownership is dedicated to the well, have the interest of all owners been consolidated by communization, unitization, force-pooling, etc.?  
☐ Yes ☐ No If answer is "yes" type of consolidation \_\_\_\_\_  
If answer is "no" list the owners and tract descriptions which have actually been consolidated. (Use reverse side of this form if necessary).  
No allowable will be assigned to the well until all interests have been consolidated (by communization, unitization, forced-pooling, or otherwise) or until a non-standard unit, eliminating such interest, has been approved by the Division.



OPERATOR CERTIFICATION

I hereby certify that the information contained herein is true and complete to the best of my knowledge and belief.

Signature  
*Debi Sheely*  
Printed Name  
**Debi Sheely**  
Position  
**Sr. Engineering Technician**  
Company  
**Hallwood Petroleum, Inc.**  
Date  
**September 18, 1992**

SURVEYOR CERTIFICATION

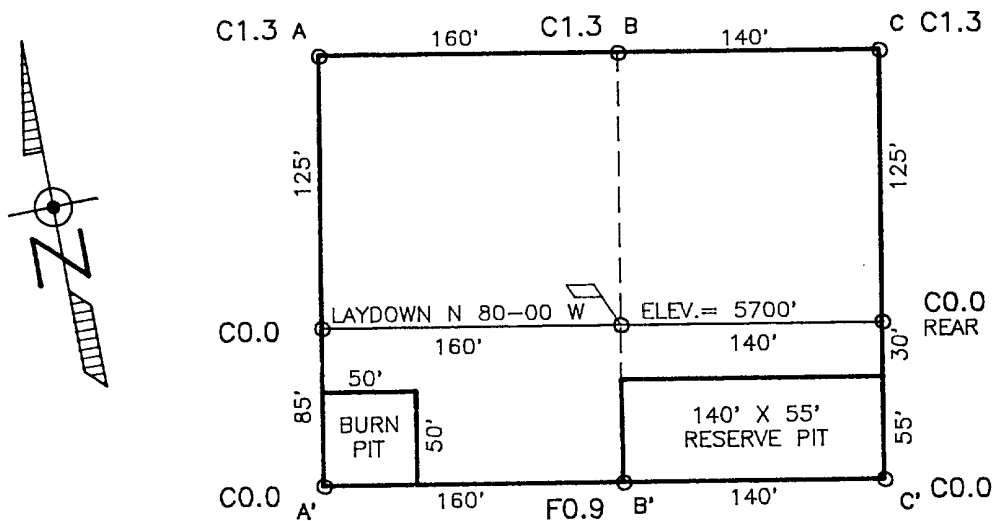
I hereby certify that the well location shown on this plat was plotted from field notes of actual surveys made by me or under my supervision, and that the same is true and correct to the best of my knowledge and belief.

Date Surveyed  
**AUG 23 1992**  
Signature & Seal of Professional Surveyor  
**ROY A. RUSH**  
Certificate No.  
**8894**

141534  
141534  
141534  
141534

141534  
141534  
141534  
141534

COMPANY: HALLWOOD PETROLEUM  
 LEASE: KLINE NO. 3-10  
 FOOTAGE: 1905 FNL, 1594 FEL  
 SEC.: 10 TWN: T.31 N. RNG: R.13 W. NMPPM  
 ELEVATION: 5700'



ELEV.	A-A' C/L				
5730					
5720					
5710					
5700					
5690					
5680					

ELEV.	B-B' C/L				
5730					
5720					
5710					
5700					
5690					
5680					

ELEV.	C-C' C/L				
5730					
5720					
5710					
5700					
5690					
5680					



Daggett Surveying, Inc.

3539 E. 30th Street Suite No. 7B Ph. (505) 326-1772  
Farmington, New Mexico 87401