

UNITED STATES
DEPARTMENT OF THE INTERIOR
BUREAU OF LAND MANAGEMENT

30-045-28952

APPLICATION FOR PERMIT TO DRILL, DEEPEN, OR PLUG BACK

1a. TYPE OF WORK DRILL	RECEIVED MAY 1 0 1993 OIL CON. DIV. DIST. 3	5. LEASE NUMBER SF-078507
1b. TYPE OF WELL GAS		6. IF INDIAN, ALL. OR TRIBE NAME
2. OPERATOR MERIDIAN OIL INC.		7. UNIT AGREEMENT NAME SAN JUAN 32-9 UNIT
3. ADDRESS & PHONE NO. OF OPERATOR P O BOX 4289 FARMINGTON, NM 87499		8. FARM OR LEASE NAME SAN JUAN 32-9 UNIT 7473
4. LOCATION OF WELL 1100' FNL 1050' FWL 795 1750		9. WELL NO. 26A
14. DISTANCE IN MILES FROM NEAREST TOWN 3.5 MI SW OF CEDAR HILL	12. COUNTY SAN JUAN	13. STATE NM
15. DISTANCE FROM PROPOSED LOCATION 1050' TO NEAREST PROPERTY OR LEASE LINE.	16. ACRES IN LEASE 2403.260	17. ACRES ASSIGNED TO WELL W/298.39
18. DISTANCE FROM PROPOSED LOCATION TO NEAREST WELL DR. 2700' COMPL., OR APPLIED FOR ON THIS LEASE	19. PROPOSED DEPTH 6300'	20. ROTARY OR CABLE TOOLS ROTARY
21. ELEVATIONS (DF, FT, GR, ETC.) 6596' GL 6687	22. APPROX. DATE WORK WILL START 5/21/92	
23. PROPOSED CASING AND CEMENTING PROGRAM		
*SEE OPERATIONS PLAN		
24. AUTHORIZED BY: <u>Samuel O. Liberman</u> REG. DRILLING ENGR.		DATE 5/21/92

PERMIT NO. _____ APPROVAL DATE _____

APPROVED BY _____ TITLE _____ DATE _____
APPROVED AS AMENDED

NOTE: THIS FORMAT IS ISSUED IN LIEU OF US BLM FORM 3160-3.

ARCH REPORT SUBMITTED 07/26/91

MAY 07 1993

NMOCD

DISTRICT MANAGER

Submit to Appropriate
District Office
State Lease - 4 copies
Fee Lease - 3 copies

State of New Mexico
Energy, Minerals and Natural Resources Department

Form C-182
Revised 1-1-89

OIL CONSERVATION DIVISION
P.O. Box 2088
Santa Fe, New Mexico 87504-2088

DISTRICT I
P.O. Box 1980, Hobbs, NM 88240

DISTRICT II
P.O. Drawer 00, Artesa, NM 88210

DISTRICT III
1000 Rio Arriba Rd., Aztec, NM 87410

WELL LOCATION AND ACREAGE DEDICATION PLAT

All Distances must be from the outer boundaries of the section

Operator Meridian Oil Inc.			Lease San Juan 32-9 Unit			Well No. 26A		
Unit Letter C	Section 1	Township 31 North	Range 10 West	County San Juan		NMTN		

Actual Forage Location of Well:

795 feet from the North line and		1750 feet from the West line		Dedicated Acreage 298.39 Acres	
Ground level Elev. 6683'		Predominant Formation Mesa Verde		Pool Blanco	

1. Outline the acreage dedicated to the subject well by colored pencil or ink on the plat below.

2. If more than one lease is dedicated to the well, outline each and identify the ownership thereof (both as to working interest and royalty).

3. If more than one lease of different ownership is dedicated to the well, have the interest of all owners been considered by communication, unanimous, force-pooling, etc.?

☒ Yes ☐ No If answer is "yes" type of consideration unitization

If answer is "no" list the owners and their descriptions which have actually been considered. (Use reverse side of this form if necessary.)

No allowance will be assigned to the well until all interests have been considered (by communication, unanimous, force-pooling, or otherwise) or until a acre-statement unit, eliminating such interest, has been approved by the Division.

2571.36		2593.80'	
8	7	6	5
1750'	795'	RECEIVED	
		MAY 10 1993	
		OIL CON. DIV.	
		DIST. 3	
9	10	11	12
NOTE: reissued to show revised location			
16	15	14	13
17	18	19	20
2640.66'		2657.16'	

OPERATOR CERTIFICATION

I hereby certify that the information contained herein is true and complete to the best of my knowledge and belief.

Signature
Peggy Bradfield

Printed Name
Peggy Bradfield

Position
Regulatory Rep

Company
Meridian Oil Inc.

Date
4-15-93

Signature
[Signature]

Printed Name
[Name]

Position
[Position]

Company
[Company]

Date
[Date]

SURVEYOR CERTIFICATION

I hereby certify that the well location shown on this plat was plotted from field notes of actual surveys made by me or under my supervision, and that the same is true and correct to the best of my knowledge and belief.

Date Surveyed
3-5-93

Signature
C. Edwards

Printed Name
C. Edwards

Position
Professional Surveyor

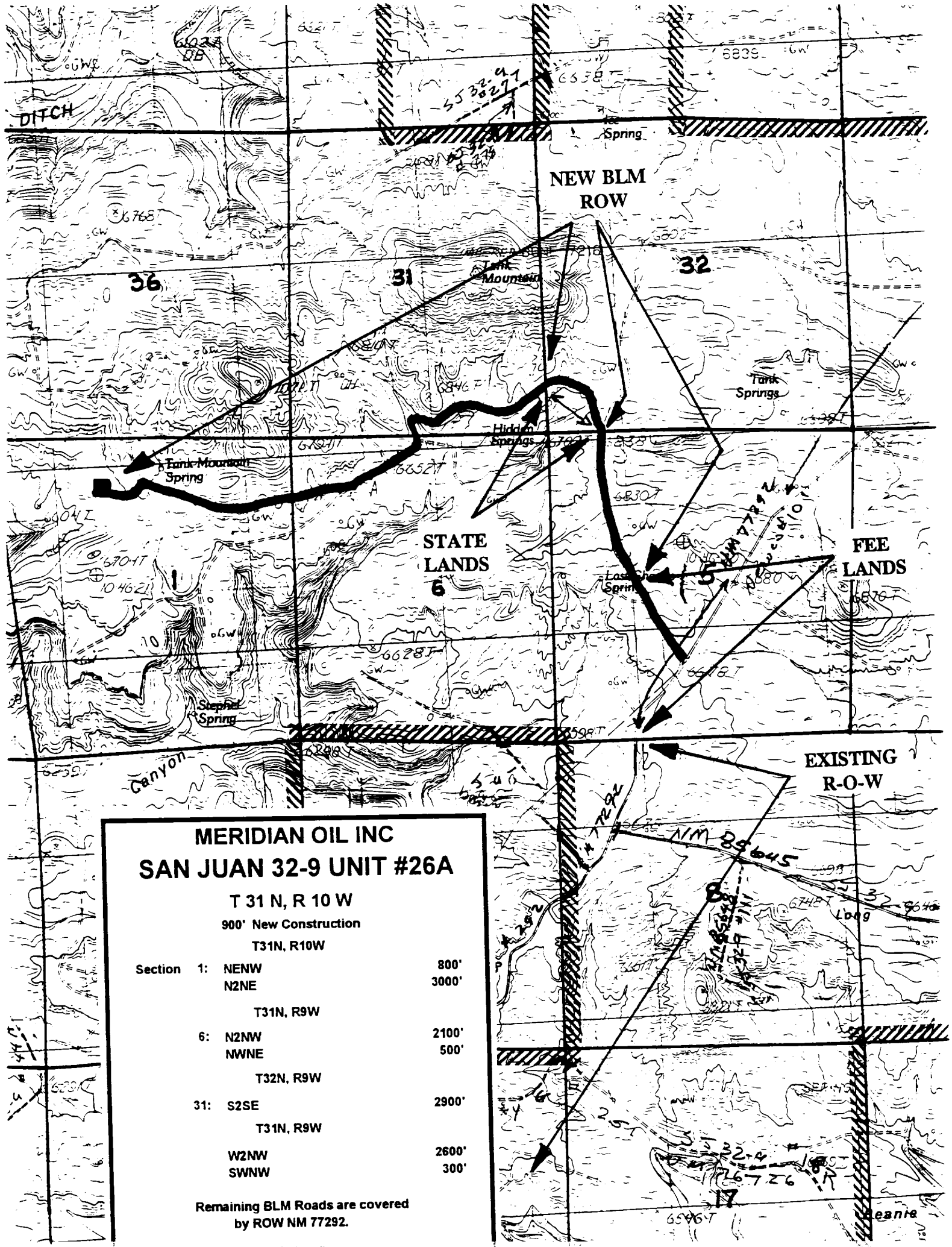
License No.
9857

Signature
[Signature]

Printed Name
[Name]

Position
[Position]

Company
[Company]



MERIDIAN OIL INC
SAN JUAN 32-9 UNIT #26A

T 31 N, R 10 W

900' New Construction

T31N, R10W

Section 1:	NENW	800'
	N2NE	3000'
T31N, R9W		
6:	N2NW	2100'
	NWNE	500'
T32N, R9W		
31:	S2SE	2900'
	T31N, R9W	
W2NW		
SWNW		2600'
		300'

**Remaining BLM Roads are covered
by ROW NM 77292.**

San Juan 32-9 Unit #26A
Operations Plan

General Well Data:

Well Name & Number--- San Juan 32-9 Unit #26A
Location----- NWNW/4 Sec. 1, T-31-N, R-10-W
Surveyed Footages---- 1100'FNL, 1050'FWL
County, State----- San Juan County, NM
Field----- Blanco
Formation----- Mesa Verde
Surveyed Elevation--- 6596'GL

<u>Formation Tops:</u>	<u>Top</u>	<u>Bottom</u>	<u>Contents</u>
Surface-----	San Jose	1882'	
Ojo Alamo-----	1882'	1983'	aquifer
Kirtland-----	1983'	3019'	
Fruitland-----	3019'	3515'	gas
Pictured Cliffs-----	3515'	5061'	gas
Mesa Verde-----	5061'	5438'	gas
Menefee-----	5438'	5777'	gas
Point Lookout-----	5777'	6300'	gas & oil
Intermediate TD-----	3725'		
Total Depth-----	6300'		

BOP Specifications and Tests:

Surface to Intermediate TD -

11" 2000 psi minimum double gate BOP stack (Reference Figure #1). After nipple-up prior to drilling out surface casing, rams and casing will be tested to 600 psi for 30 minutes.

Intermediate TD to Total Depth -

11" 2000 psi minimum double gate BOP stack (Reference Figure #1). After nipple-up prior to drilling out intermediate casing, rams and casing will be tested to 1500 psi for 30 minutes.

Surface to Total Depth -

2" nominal, 2000 psi minimum choke manifold (Reference Figure #3).

Completion Operations -

6" 3000 psi double gate BOP stack (Reference Figure #2). After nipple-up prior to completion, pipe rams, liner and casing will be tested to 3000 psi for 15 minutes.

Wellhead -

9 5/8" X 7" X 2 3/8" X 3000 psi tree assembly

Operations Plan
San Juan 32-9 Unit #26A
Page Two

General -

- * Pipe Rams will be actuated once each day and blind rams will be actuated once each trip to test proper functioning.
- * An upper kelly cock valve with handle available and drill string safety valves to fit each drill string will be available on the rig floors at all times.
- * A BOP pit level drill will be conducted weekly for each drilling crew.
- * All of the BOP tests and drills will be recorded in the Daily Drilling Reports.
- * Blind and pipe rams will be equipped with extension hand wheels.

Proposed Program for Casing, Cementing and Drilling Operations:

Casing and Cementing Program:

Interval(ft)	Hole Size	Csg. Size	Weight	Grade	Thread	Cond
=====	=====	=====	=====	=====	=====	=====
0 - 200'	12 1/4"	9 5/8"	36.0#	HC-80	8rd LT&C	New
0 - 3725'	8 3/4"	7"	20.0#	K-55	8rd LT&C	New
3575 - 6300'	6 1/4"	4 1/2"	11.6#	K-55	8rd ST&C	New

Surface Casing - 9 5/8"

Cement to surface w/140 sx Class "B" cement w/ 3% calcium chloride and 1/4#/sx cellophane flakes. WOC 12 hrs prior to drilling out surface csg. (165 cu.ft. slurry, 100% excess).

Saw tooth guide shoe on bottom. Bowspring centralizers on bottom and every fourth joint to surface.

Intermediate Casing - 7"

First stage - cement to circulate stage tool @ 2750' w/200 sx of Class "B" cement w/2% calcium chloride, 6.25# gilsonite per sack and 1/4# cellophane flakes per sack (257 cu.ft.slurry, 75% excess).

Operations Plan
San Juan 32-9 Unit #26A
Page Three

Second stage - cement to surface. Lead w/345 sx of 65/35 Class "B" pozmix w/12% gel, 6# gilsonite per sack and 1/4# cellophane flakes per sack. Tail w/75 sx Class "B" cement with 2% calcium chloride (827 cu.ft.slurry, 100% excess on lead). WOC a minimum of 12 hours prior to drilling out intermediate casing. A temperature log will be run in eight (8) hours if cement does not circulate.

Cement nose guide shoe on bottom with float collar spaced on top of shoe joint. Three (3) bowspring centralizers spaced every other joint off bottom. Twelve (12) bowspring centralizers spaced every third joint to base of Ojo Alamo @ 1983'. Two (2) turbolating centralizers at the base of the Ojo Alamo @ 1983'. Bowspring centralizers spaced every fourth joint from the base of the Ojo Alamo to the base of the surface casing. A cementing stage tool will be run @ 2750'.

Production Liner - 4 1/2"

Cement to circulate liner top with 320 sx of 50/50 Class "B" Pozmix. Cement with 2% gel, 0.6% fluid loss additive, 6.25# gilsonite per sack and 1/4# cellophane flakes per sack (500 cu.ft. slurry, 75% excess). WOC a minimum of 18 hours prior to completing.

Cement nose guide shoe on bottom with float collar spaced on top of shoe joint. Bowspring centralizers spaced every other joint from 8 joints off bottom to the top of the Mesa Verde or above. The liner hanger will have a rubber packoff.

General -

- * If hole conditions permit, an adequate water spacer will be pumped ahead of each cement job to prevent cement/mud contamination or cement hydration.
- * The pipe will be rotated and/or reciprocated, if hole conditions permit.