

UNITED STATES
DEPARTMENT OF THE INTERIOR

BUREAU OF LAND MANAGEMENT

Form approved.
Budget Bureau No. 1004-0136
Expires: December 31, 1991

APPLICATION FOR PERMIT TO DRILL OR DEEPEN

1a. TYPE OF WORK

DRILL ☒

DEEPEN ☐

b. TYPE OF WELL

OIL WELL ☐

GAS WELL ☒

OTHER

SINGLE ZONE ☐

MULTIPLE ZONE ☒

2. NAME OF OPERATOR

Attention:

Amoco Production Company

Julie L. Acevedo

3. ADDRESS AND TELEPHONE NO.

P.O. Box 800, Denver, Colorado 80201

(303) 830-6003

4. LOCATION OF WELL (Report location clearly and in accordance with any State requirements.)*

At surface

1255PMT

670FWL

At proposed prod. zone

FSL

14. DISTANCE IN MILES AND DIRECTION FROM NEAREST TOWN OR POST OFFICE*

15 miles from Aztec

15. DISTANCE FROM PROPOSED*

LOCATION TO NEAREST
PROPERTY OR LEASE LINE, FT.
(Also to nearest drlg. unit line, if any)

16. NO. OF ACRES IN LEASE

2080

17. NO. OF ACRES ASSIGNED
TO THIS WELL

320 S/2 S/320 ✓

18. DISTANCE FROM PROPOSED LOCATION*

TO NEAREST WELL, DRILLING, COMPLETED,
OR APPLIED FOR, ON THIS LEASE, FT.

19. PROPOSED DEPTH

7674' TD

20. ROTARY OR CABLE TOOLS

Rotary

21. ELEVATIONS (Show whether DF, RT, GR., etc.)

6223' GR

This action is subject to technical and

procedural review pursuant to 43 CFR 3160.3

and appeal pursuant to 43 CFR 3160.4.

DRILLING OPERATIONS AUTHORIZED ARE
SUBJECT TO COMPLIANCE WITH ATTACHED
GENERAL REQUIREMENTS &
QUANTITY OF CEMENT

23.

SIZE OF HOLE	GRADE, SIZE OF CASING	WEIGHT PER FOOT	SETTING DEPTH	
17 1/2"	13 3/8" J-55	61#	400'	625cf CI B W/2% CaCl2 (Cement to surface)
12 1/4"	9 5/8" J-55	36#	3215'	2215cf CI B (Cement to surface)
8 3/4"	7" J-55	23#	7251'	207cf CI B 50/50poz (Cement to surface)
6 1/4"	4 1/2"	11.6#	7051' - 7674'	105cf CI G

Notice of staking was submitted on 8/13/93.

Lease Description: T32N-R11W

Sec: 13 S/2

Sec: 14 E/2SE/4

Sec: 15 W/2SW/4

Sec: 22 N/2NW/4, SW/4

Sec: 23 NW/4NW/4, S/2 NE/4, SE/4, E/2SW/4

Sec: 24 NE/4, S/2NW/4

Sec: 26 E/2NW/4, NE/4, SW/4SE/4, SW/4

Sec: 27 N/2

RECEIVED
OCT 18 1993
OIL CON. DIV.
DIST. 3

070 HAZARD/CON. NM
OCT 21 1993 AM 9:54

RECEIVED
OCT 21 1993

IN ABOVE SPACE DESCRIBE PROPOSED PROGRAM: If proposal is to deepen, give data on present productive zone and proposed new productive zone. If proposal is to drill or deepen directionally, give pertinent data on subsurface locations and measured and true vertical depths. Give blowout preventer program, if any.

24.

SIGNED

Julie L. Acevedo

TITLE Sr. Staff Assistant

DATE

8/26/93

(This space for Federal or State office use)

PERMIT NO.

APPROVAL DATE

Application approval does not warrant or certify that the applicant holds legal or equitable title to those rights in the subject lease which would entitle the applicant to carry out the proposed program.

CONDITIONS OF APPROVAL, IF ANY:

APPROVED BY

TITLE

NSL-3318 (2)

NMOCD

*See Instructions On Reverse Side

DISTRICT MANAGER

Title 18 U.S.C. Section 1001, makes it a crime for any person knowingly and willfully to make to any department or agency of the United States any false, fictitious or fraudulent statements or representations as to any matter within its jurisdiction.

Submit to Appropriate
District Office
State Lease - 4 copies
Fee Lease - 3 copies

State of New Mexico
Energy, Minerals and Natural Resources Department

Form C-102
Revised 1-1-89

OIL CONSERVATION DIVISION

P.O. Box 2088
Santa Fe, New Mexico 87504-2088

DISTRICT I
P.O. Box 1980, Hobbs, NM 88240

DISTRICT II
P.O. Drawer DD, Artesia, NM 88210

DISTRICT III
1000 Rio Brazos Rd., Aztec, NM 87410

WELL LOCATION AND ACREAGE DEDICATION PLAT

All Distances must be from the outer boundaries of the section

Operator AMOCO PRODUCTION COMPANY			Lease <i>Brown Fed J</i> Barnes B.		Well No. #9M 1
Unit Letter M	Section 13	Township 32 NORTH	Range 11 WEST	County SAN JUAN	
Actual Footage Location of Well: 1255 feet from the SOUTH line and 670 feet from the WEST line					
Ground level Elev. 6223	Producing Formation Basin Dakota		Pool Basin Dakota	Dedicated Acreage: S/2 320 Acres	

1. Outline the acreage dedicated to the subject well by colored pencil or hatchure marks on the plat below.
2. If more than one lease is dedicated to the well, outline each and identify the ownership thereof (both as to working interest and royalty).
3. If more than one lease of different ownership is dedicated to the well, have the interest of all owners been consolidated by communitization, unitization, force-pooling, etc?
☐ Yes ☐ No If answer is "yes" type of consolidation _____
If answer is "no" list the owners and tract descriptions which have actually been consolidated. (Use reverse side of this form if necessary).
No allowable will be assigned to the well until all interests have been consolidated (by communitization, unitization, forced-pooling, or otherwise) or until a non-standard unit, eliminating such interest, has been approved by the Division.

OPERATOR CERTIFICATION

I hereby certify that the information contained herein is true and complete to the best of my knowledge and belief.

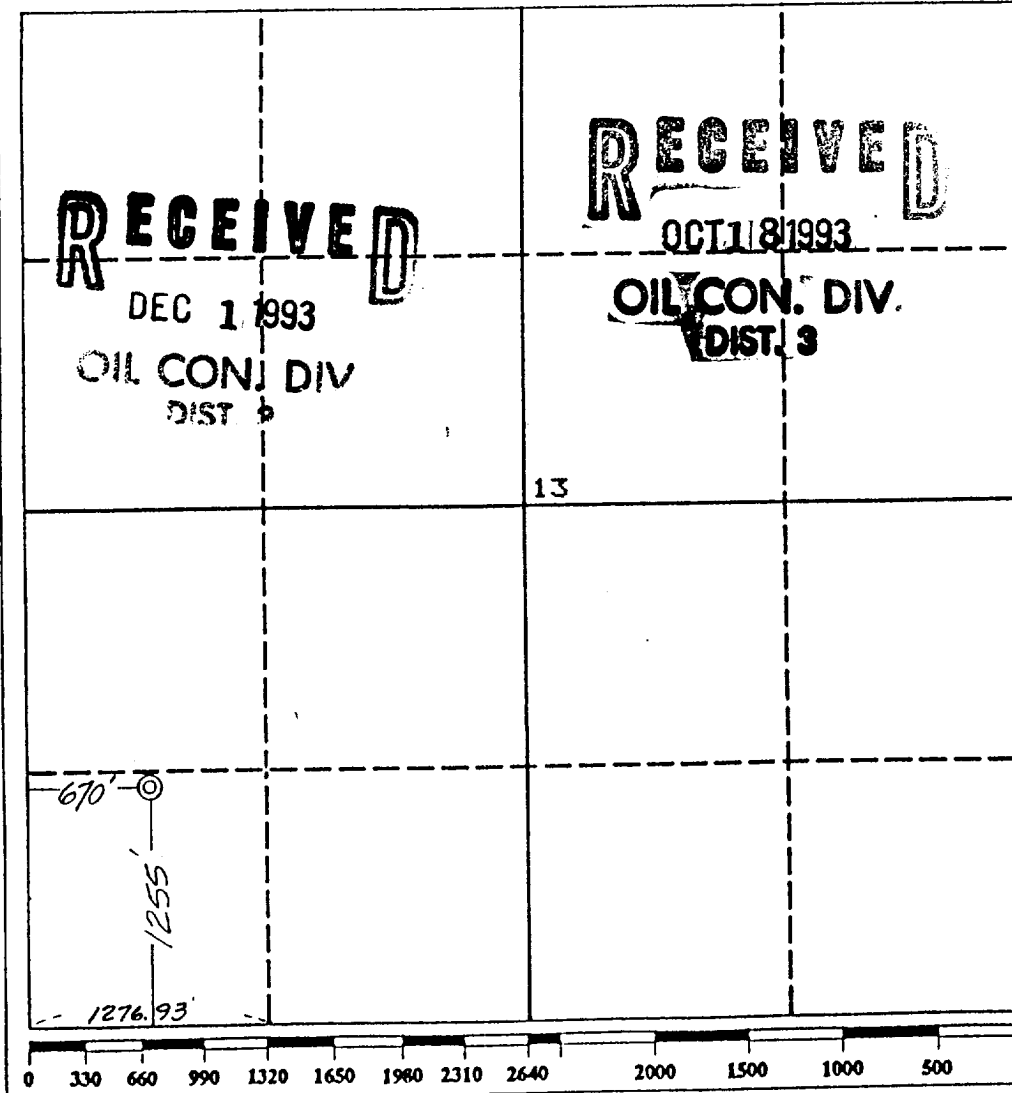
Signature *Julie L. Acevedo*
Printed Name **Julie L. Acevedo**
Position **Sr. Staff Assistant**
Company **Amoco Production Company**
Date **8/13/93**

SURVEYOR CERTIFICATION

I hereby certify that the well location shown on this plat was plotted from field notes of actual surveys made by me or under my supervision, and that the same is true and correct to the best of my knowledge and belief.

Date Surveyed
August 3, 1993

Signature & Seal of Professional Surveyor
GARY D. VANN
NEW MEXICO
REGISTERED
7016
PROFESSIONAL LAND SURVEYOR



Submit to Appropriate
District Office
State Lease - 4 copies
Fee Lease - 3 copies

State of New Mexico
Energy, Minerals and Natural Resources Department

Form C-102
Revised 1-1-89

OIL CONSERVATION DIVISION

DISTRICT I
P.O. Box 1980, Hobbs, NM 88240

P.O. Box 2088

Santa Fe, New Mexico 87504-2088

DISTRICT II
P.O. Drawer DD, Artesia, NM 88210

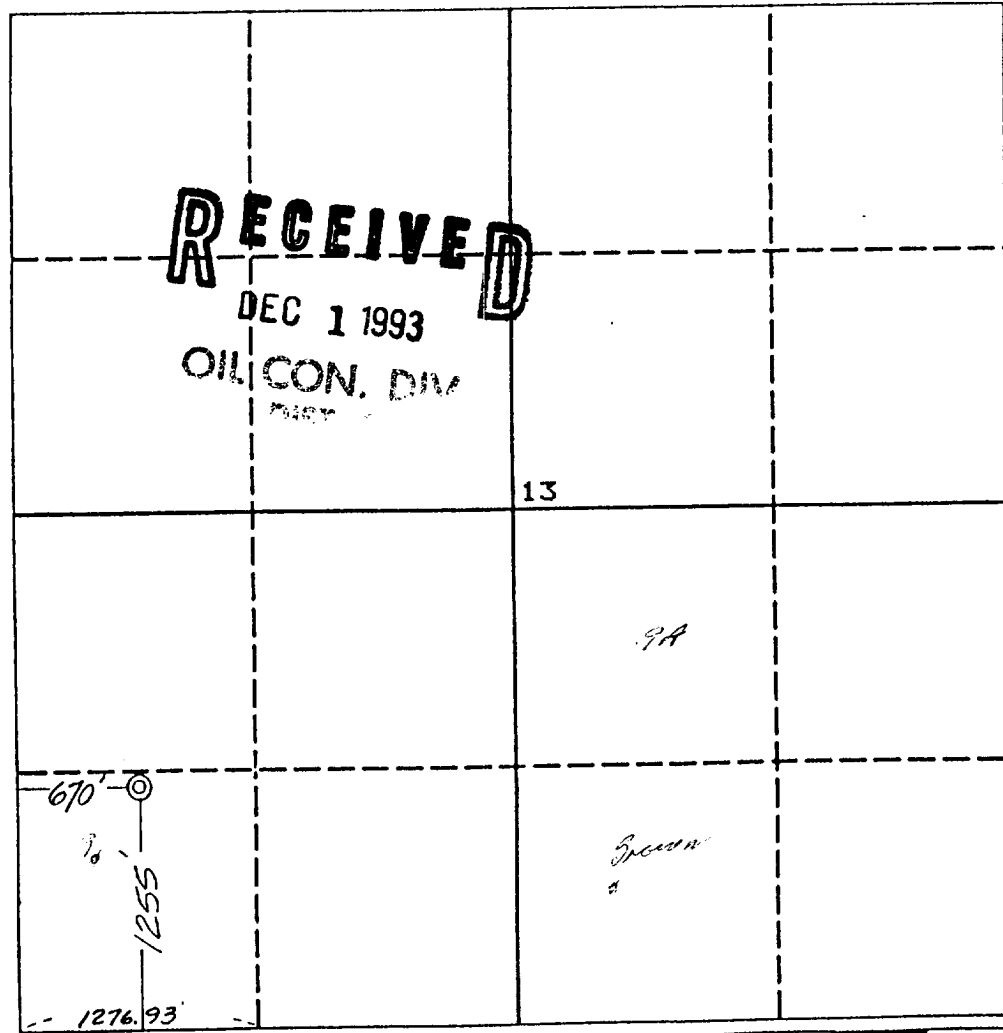
DISTRICT III
1000 Rio Brazos Rd., Aztec, NM 87410

WELL LOCATION AND ACREAGE DEDICATION PLAT

All Distances must be from the outer boundaries of the section

Operator AMOCO PRODUCTION COMPANY			Lease <i>Brown Fed J</i> <i>Barnes B.</i>		Well No. <i>#9M 1.</i>
Unit Letter M	Section 13	Township 32 NORTH	Range 11 WEST	County SAN JUAN	
Actual Footage Location of Well: 1255 feet from the SOUTH line and 670 feet from the WEST line					
Ground level Elev. 6223	Producing Formation Blanco Mesaverde		Pool Blanco Mesaverde		Dedicated Acreage: S/2 320 Acres

- Outline the acreage dedicated to the subject well by colored pencil or hatchure marks on the plat below.
- If more than one lease is dedicated to the well, outline each and identify the ownership thereof (both as to working interest and royalty).
- If more than one lease of different ownership is dedicated to the well, have the interest of all owners been consolidated by communitization, unitization, force-pooling, etc?
☐ Yes ☐ No If answer is "yes" type of consolidation _____
If answer is "no" list the owners and tract descriptions which have actually been consolidated. (Use reverse side of this form if necessary.)
No allowable will be assigned to the well until all interests have been consolidated (by communitization, unitization, forced-pooling, or otherwise) or until a non-standard unit, eliminating such interest, has been approved by the Division.



OPERATOR CERTIFICATION

I hereby certify that the information contained herein is true and complete to the best of my knowledge and belief.

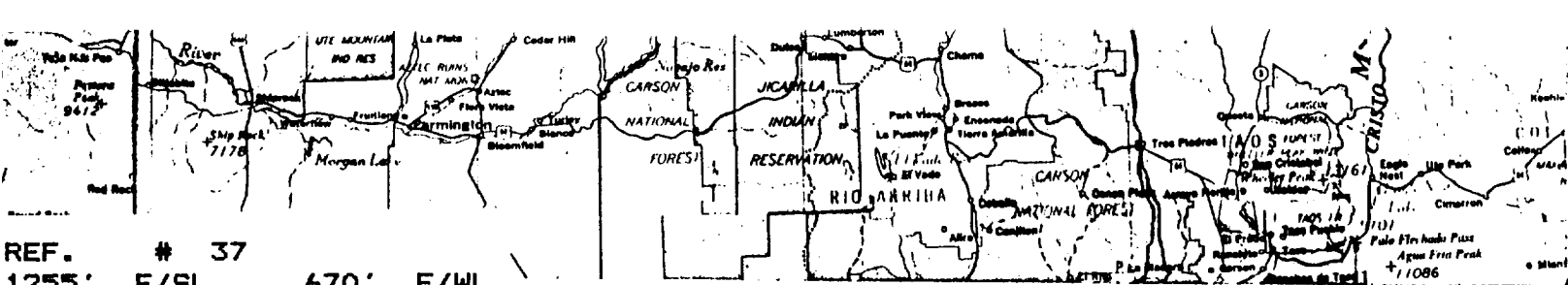
Signature *Julie L. Acevedo*
Printed Name **Julie L. Acevedo**
Position **Sr. Staff Assistant**
Company **Amoco Production Company**
Date **8/13/93**

SURVEYOR CERTIFICATION

I hereby certify that the well location shown on this plat was plotted from field notes of actual surveys made by me or under my supervision, and that the same is true and correct to the best of my knowledge and belief.

Date Surveyed
August 3, 1993

Signature & Seal of Professional Surveyor
Gary D. Vann
GARY D. VANN
7016
Certification No. **7016**
REGISTERED PROFESSIONAL LAND SURVEYOR



REF. # 37

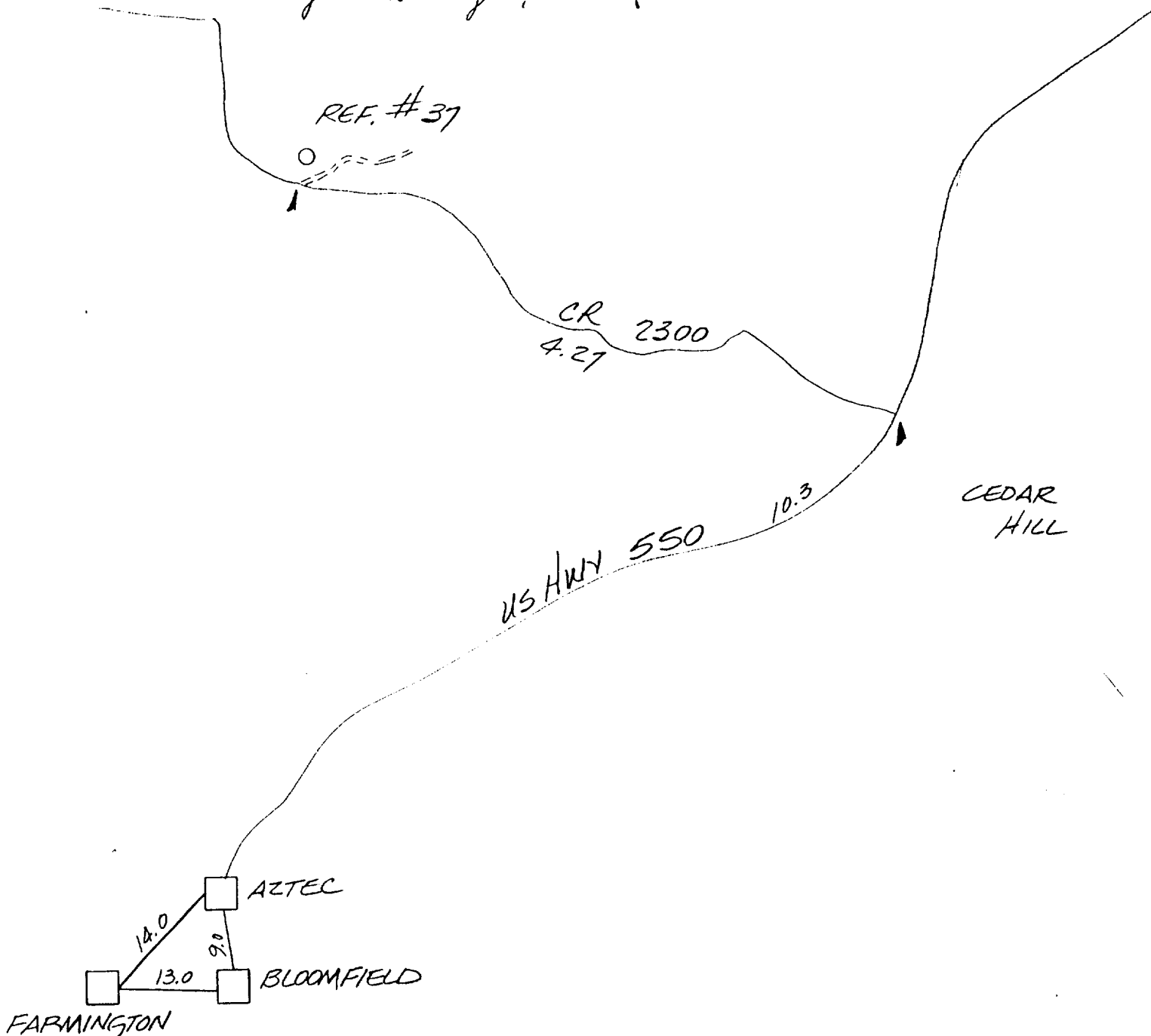
1255' F/SL 670' F/WL

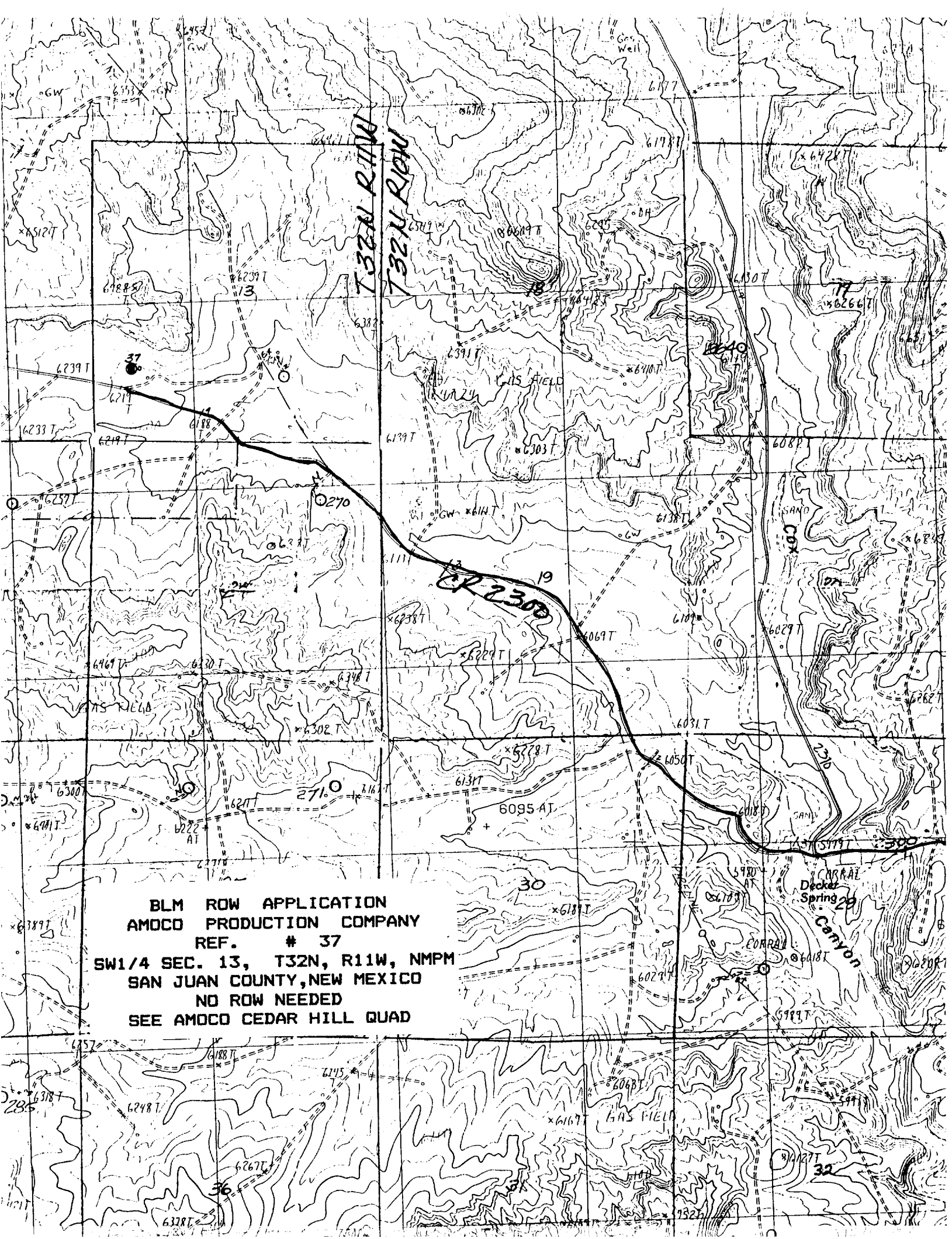
SEC. 13, T32N, R11W, NMPM

RAIL POINT: 157 miles from Monticello, Co.

MUD POINT: 15 miles from Aztec, N.M.

CEMENT POINT: 29 miles from Farmington, N.M.





BLM ROW APPLICATION
AMOCO PRODUCTION COMPANY
REF. # 37

SW1/4 SEC. 13, T32N, R11W, NMPM
SAN JUAN COUNTY, NEW MEXICO
NO ROW NEEDED
SEE AMOCO CEDAR HILL QUAD