


UNITED STATES
DEPARTMENT OF THE INTERIOR
BUREAU OF LAND MANAGEMENT

RECEIVED
BLM MAIL ROOM

APPLICATION FOR PERMIT TO DRILL, DEEPEN, OR PLUG BACK

95 NOV 29 PM 2:59

1a. Type of Work DRILL	5. Lease Number SF-078389A Unit Reporting Number	
1b. Type of Well GAS	6. If Indian, All. or Tribe	
2. Operator MERIDIAN OIL H538	7. Unit Agreement Name San Juan 32-9 Unit	
3. Address & Phone No. of Operator PO Box 4289, Farmington, NM 87499 (505) 326-9700	8. Farm or Lease Name 7423 San Juan 32-9 Unit 9. Well Number 4B	
4. Location of Well 1735' FSL, 1345' FEL Latitude 36° 54.6, Longitude 107° 49.9	10. Field, Pool, Wildcat Blanco MV 723A 11. Sec., Twn, Rge, Mer. (NMPM) J Sec 12, T-31-N, R-10-W API # 30-045-29352	
14. Distance in Miles from Nearest Town 3 miles to Cedar Hill	12. County San Juan	13. State NM
15. Distance from Proposed Location to Nearest Property or Lease Line 1345'	17. Acres Assigned to Well 276.36 E/2	
16. Acres in Lease		
18. Distance from Proposed Location to Nearest Well, Drig, Compl, or Applied for on this Lease 600'		
19. Proposed Depth 6050'	20. Rotary or Cable Tools Rotary	
21. Elevations (DF, FT, GR, Etc.) 6566' GR	22. Approx. Date Work will Start 4th quarter 1995	
23. Proposed Casing and Cementing Program See Operations Plan attached	DRILLING OPERATIONS AUTHORIZED ARE SUBJECT TO COMPLIANCE WITH ATTACHED "GENERAL REQUIREMENTS"	
24. Authorized by:  Regional Drilling Engineer	Date 11/27/95	

PERMIT NO. _____ APPROVAL DATE _____
APPROVED BY _____ TITLE _____ DATE _____

Archaeological Report to be submitted
Threatened and Endangered Species Report to be submitted
NOTE: This format is issued in lieu of U.S. BLM Form 3160-3

NMOCD

APPROVED
AS AMENDED

FEB 14 1996

for 
DISTRICT MANAGER

OIL CONSERVATION DIVISION

PO Box 2088
Santa Fe, NM 87504-2088 29 PM 2:59

070 FARMINGTON, NM

☐ AMENDED REPORT

WELL LOCATION AND ACREAGE DEDICATION PLAT

1 API Number		2 Pool Code		3 Pool Name	
30-045-29352		72319		Blanco Mesaverde	
4 Property Code		5 Property Name			6 Well Number
7473		San Juan 32-9 Unit			4B
7 OGRID No.		8 Operator Name			9 Elevation
14538		Meridian Oil Inc.			6566'

¹⁰ Surface Location

UL or lot no.	Section	Township	Range	Lot Idn	Feet from the	North/South line	Feet from the	East/West line	County
J	12	31 N	10 W		1735	South	1345	East	S.J.

¹¹ Bottom Hole Location If Different From Surface

UL or lot no.	Section	Township	Range	Lot Idn	Feet from the	North/South line	Feet from the	East/West line	County
---------------	---------	----------	-------	---------	---------------	------------------	---------------	----------------	--------

¹² Dedicated Acres E/276.36	¹³ Joint or Infill	¹⁴ Consolidation Code	¹⁵ Order No.
---	-------------------------------	----------------------------------	-------------------------

**NO ALLOWABLE WILL BE ASSIGNED TO THIS COMPLETION UNTIL ALL INTERESTS HAVE BEEN CONSOLIDATED
OR A NON-STANDARD UNIT HAS BEEN APPROVED BY THE DIVISION**

16	4575.12'	<div style="text-align: center;"> <p>4</p> <p>3</p> <p>2</p> <p>1</p> </div>	<div style="text-align: center;"> <p>RECEIVED</p> <p>FEB 20 1996</p> <p>OIL CON. DIV.</p> <p>DIST. 3</p> <p>NMSF-078389A</p> </div>
2645.28'	2657.16'	<div style="text-align: center;"> <p>5</p> <p>6</p> <p>7</p> </div>	<div style="text-align: center;"> <p>12</p> <p>10</p> <p>9</p> </div>
2618.22'	2626.80'	<div style="text-align: center;"> <p>12</p> <p>11</p> <p>10</p> <p>9</p> </div>	<div style="text-align: center;"> <p>13</p> <p>14</p> <p>15</p> <p>16</p> </div>
1144.77	1144.77	<div style="text-align: center;"> <p>34.39</p> <p>1735'</p> <p>1345'</p> <p>200'</p> </div>	<div style="text-align: center;"> <p>1144.77</p> <p>1144.77</p> </div>

4579.08'

69.38

OPERATIONS PLAN

Well Name: San Juan 32-9 Unit #4B
Location: 1735' FSL, 1345' FEL Section 12, T-31-N, R-10-W
 San Juan County, New Mexico
 Latitude 36° 54.6, Longitude 107° 49.9
Formation: Blanco Mesa Verde
Elevation: 6566' GL

<u>Formation Tops:</u>	<u>Top</u>	<u>Bottom</u>	<u>Contents</u>
Surface	San Jose	1963'	
Ojo Alamo	1963'	2036'	aquifer
Kirtland	2036'	2954'	
Fruitland	2954'	3367'	gas
Pictured Cliffs	3367'	3546'	gas
Lewis	3546'	4099'	
Intermediate TD	3750'		
Huerfano Bentonite	4099'	4144'	
Chacra	4144'	5194'	
Massive Cliff House	5194'	5274'	gas
Menefee	5274'	5596'	gas
Massive Point Lookout	5596'	5704'	gas
Lower Point Lookout	5704'		
Total Depth	6050'		

Logging Program:

Openhole Wireline Logging -

Surface to Intermediate TD : DIL/LDT/CNL/NGT/ML/FMS
 Intermediate TD to Total Depth : DIL/LDT/CNL/Temp

Mud Logs/Coring/DST -

Mud logs - 1900' to Total Depth
 Cores - none
 DST - none

Mud Program:

<u>Interval</u>	<u>Type</u>	<u>Weight</u>	<u>Vis.</u>	<u>Fluid Loss</u>
0- 200'	Spud	8.4-8.9	40-50	no control
200-3750'	Weighted	8.4-9.1	30-60	no control
3750-6050'	Gas/Mist	n/a	n/a	n/a

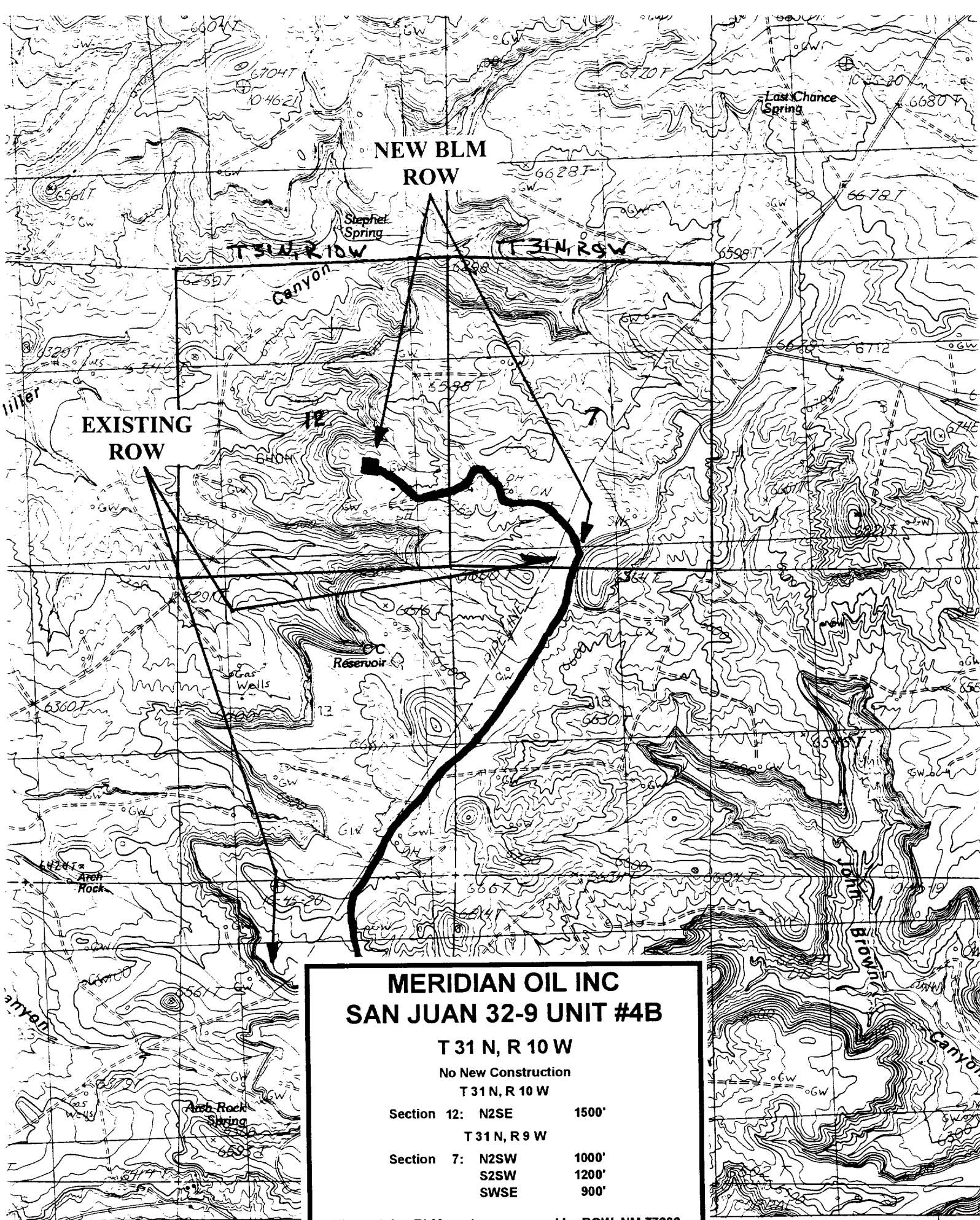
Pit levels will be visually monitored to detect gain or loss of fluid control.

Casing Program:

<u>Hole Size</u>	<u>Depth Interval</u>	<u>Csg. Size</u>	<u>Wt.</u>	<u>Grade</u>
12 1/4"	0' - 200'	9 5/8"	32.3#	H-40
8 3/4"	0' - 3750'	7"	20.0#	K-55
6 1/4"	3600' - 6050'	4 1/2"	10.5#	K-55

Tubing Program:

0' - 6050'	2 3/8"	4.7#	J-55
------------	--------	------	------



**MERIDIAN OIL INC
SAN JUAN 32-9 UNIT #4B**

T 31 N, R 10 W

No New Construction

T 31 N, R 10 W

Section 12: N2SE 1500'

T 31 N, R 9 W

Section 7: N2SW 1000'

S2SW 1200'

SWSE 900'

All remaining BLM roads are covered by ROW NM 77292.

APD MAP #1

:24 000