

District I
 PO Box 1980, Hobbs, NM 88241-1980
 District II
 811 South First, Artesia, NM 88210
 District III
 1000 Rio Brazos Rd., Aztec, NM 87410
 District IV
 2040 South Pacheco, Santa Fe, NM 87505

State of New Mexico
 Energy, Minerals & Natural Resources Department

OIL CONSERVATION DIVISION
 2040 South Pacheco
 Santa Fe, NM 87505

RECEIVED
FEB 12 1998
OIL CON. DIV.
DIST. 3

Form C-101
 Revised October 18, 1994
 Instructions on back
 Submit to Appropriate District Office
 State Lease - 6 Copies
 Fee Lease - 5 Copies
 AMENDED REPORT

APPLICATION FOR PERMIT TO DRILL, RE-ENTER, DEEPEN, PLUGBACK, OR ADD A ZONE

¹ Operator Name and Address. Burlington Resources PO Box 4289, Farmington, NM 87499		² OGRID Number 14538
		³ API Number 30-045-29526
⁴ Property Code 6784	⁵ Property Name Allison Unit	⁶ Well No. 47

⁷ Surface Location

UL or lot no.	Section	Township	Range	Lot Idn	Feet from the	North/South line	Feet from the	East/West line	County
M	8	32N	6W		600	S	790	W	SJ

⁸ Proposed Bottom Hole Location If Different From Surface

UL or lot no.	Section	Township	Range	Lot Idn	Feet from the	North/South line	Feet from the	East/West line	County
⁹ Proposed Pool 1 Blanco Mesa Verde 72319 W/277.31					¹⁰ Proposed Pool 2 Basin Dakota 71599 W/277.31				

¹¹ Work Type Code N	¹² Well Type Code G	¹³ Cable/Rotary Rotary	¹⁴ Lease Type Code Fee	¹⁵ Ground Level Elevation 6521
¹⁶ Multiple Y	¹⁷ Proposed Depth 8023	¹⁸ Formation MV/Dk	¹⁹ Contractor N/a	²⁰ Spud Date N/a

²¹ Proposed Casing and Cement Program

Hole Size	Casing Size	Casing weight/foot	Setting Depth	Sacks of Cement	Estimated TOC
12 1/4"	9 5/8"	32.3#	200'	188 cu.ft.	Surface
8 3/4"	7"	20.0#	3533'	1009 cu.ft.	Surface
6 1/4"	4 1/2"	10.5#	8023'	706 cu.ft.	3433'

²² Describe the proposed program. If this application is to DEEPEN or PLUG BACK give the data on the present productive zone and proposed new productive zone. Describe the blowout prevention program, if any. Use additional sheets if necessary.
 11" 2000 psi minimum double gate BOP

Note: to facilitate higher hydraulic stimulation completion work, no liner hanger will be used. In its place, a long string of 4 1/2" casing will be run and cemented with a minimum of 100' of cement overlap between the 4 1/2" and 7" casing strings. After completion of the well, a 4 1/2" retrievable bridge plug will be set below the top of cement in the 4 1/2" x 7" overlap. The 4 1/2" casing will then be backed off above the top of cement in the 4 1/2" x 7" overlap and laid down. The liner top can then be pressure tested to ensure a seal between the liner top and the 7" casing has been achieved. The test pressure shall be the maximum anticipated pressure to which the seal will be exposed (700 psi for the Mesa Verde and 2500 psi for the Dakota). The 4 1/2" bridge plug will then be retrieved and the production tubing will be run to produce the well.

²³ I hereby certify that the information given above is true and complete to the best of my knowledge and belief. Signature: <i>Peggy Bradfield</i>	OIL CONSERVATION DIVISION	
Printed name: Peggy Bradfield	Approved by: <i>Erin Busch 2-7298</i>	
Title: Regulatory/Compliance Administrator	Title: DEPUTY OIL & GAS INSPECTOR, DIST. #3	
Date: January 19, 1998	Approval Date: FEB 12 1998	Expiration Date: FEB 12 1999
Phone: 505-326-9700	Conditions of Approval: <i>HOOD C-104 1000</i> Attached <input type="checkbox"/>	

District I
PO Box 1980, Hobbs, NM 88241-1980

State of New Mexico
Energy, Minerals & Natural Resources Department

Form C-102
Revised February 21, 1994

District II
PO Drawer DD, Artesia, NM 88211-0719

OIL CONSERVATION DIVISION
PO Box 2088
Santa Fe, NM 87504-2088

Instructions on back
Submit to Appropriate District Office
State Lease - 4 Copies
Fee Lease - 3 Copies

District III
1000 Rio Brazos Rd., Aztec, NM 87410

AMENDED REPORT

District IV
PO Box 2088, Santa Fe, NM 87504-2088

WELL LOCATION AND ACREAGE DEDICATION PLAT

*API Number 30-045- 28526		*Pool Code 72319/71599	*Pool Name Blanco Mesaverde/Basin Dakota
*Property Code 6784	*Property Name ALLISON UNIT		*Well Number 47
*OGRID No. 14538	*Operator Name BURLINGTON RESOURCES OIL & GAS COMPANY		*Elevation 6521'

¹⁰ Surface Location

UL or lot no.	Section	Township	Range	Lot Idn	Feet from the	North/South line	Feet from the	East/West line	County
M	8	32N	6W		600	South	790	West	SAN JUAN

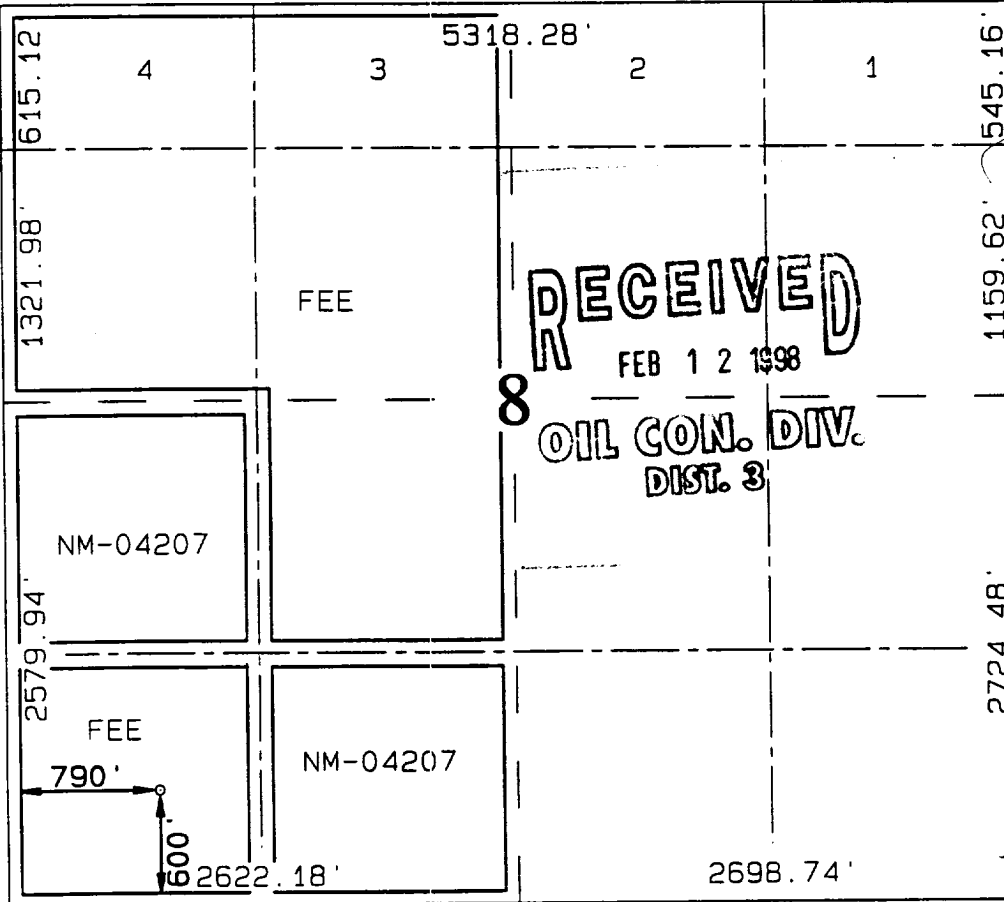
¹¹ Bottom Hole Location If Different From Surface

UL or lot no.	Section	Township	Range	Lot Idn	Feet from the	North/South line	Feet from the	East/West line	County

¹² Dedicated Acres MV-W/277.31 DK-W/277.31	¹³ Joint or Infill	¹⁴ Consolidation Code	¹⁵ Order No.
---	-------------------------------	----------------------------------	-------------------------

NO ALLOWABLE WILL BE ASSIGNED TO THIS COMPLETION UNTIL ALL INTERESTS HAVE BEEN CONSOLIDATED OR A NON-STANDARD UNIT HAS BEEN APPROVED BY THE DIVISION

¹⁶



¹⁷ OPERATOR CERTIFICATION

I hereby certify that the information contained herein is true and complete to the best of my knowledge and belief

Peggy Bradfield
Signature
Peggy Bradfield
Printed Name
Regulatory Administrator
Title
1-19-98
Date

¹⁸ SURVEYOR CERTIFICATION

I hereby certify that the well location shown on this plat was plotted from field notes of actual surveys made by me or under my supervision, and that the same is true and correct to the best of my belief.

NOVEMBER 11, 1997
Date of Survey
Signature and Seal of Professional Surveyor
NEALE C. EDWARDS
NEW MEXICO
6857
6857
Certificate Number
PROFESSIONAL SURVEYOR

RECEIVED
MAY 1 1958

UNITED STATES GOVERNMENT
WASHINGTON, D. C.