

UNITED STATES
DEPARTMENT OF THE INTERIOR
BUREAU OF LAND MANAGEMENT

APPLICATION FOR PERMIT TO DRILL, DEEPEN, OR PLUG BACK

1a. Type of Work DRILL	5. Lease Number SF-081155
	Unit Reporting Number
1b. Type of Well GAS	6. If Indian, All. or Tribe
2. Operator BURLINGTON RESOURCES Oil & Gas Company	7. Unit Agreement Name Allison Unit
3. Address & Phone No. of Operator PO Box 4289, Farmington, NM 87499 (505) 326-9700	8. Farm or Lease Name Allison Unit
	9. Well Number 53A
4. Location of Well 1045' FSL, 2255' FEL Latitude 36° 56.8, Longitude 107° 28.9	10. Field, Pool, Wildcat Blanco Mesaverde
	11. Sec., Twn, Rge, Mer. (NMPM) Sec 29, T-32-N, R-6-W ARI # 30-045-
14. Distance in Miles from Nearest Town 5 miles to Allison	12. County SJ
	13. State NM
15. Distance from Proposed Location to Nearest Property or Lease Line 1045'	17. Acres Assigned to Well 320
16. Acres in Lease	
18. Distance from Proposed Location to Nearest Well, Drlg, Compl, or Applied for on this Lease 1000'	
19. Proposed Depth 6028'	20. Rotary or Cable Tools Rotary
21. Elevations (DF, FT, GR, Etc.) 6415' GR	22. Approx. Date Work will Start
23. Proposed Casing and Cementing Program See Operations Plan attached	DRILLING OPERATIONS AUTHORIZED ARE SUBJECT TO COMPLIANCE WITH ATTACHED "GENERAL REQUIREMENTS"
24. Authorized by <i>[Signature]</i> Regulatory/Compliance Administrator	Date 5-30-98

PERMIT NO. _____ APPROVAL DATE _____

APPROVED BY /S/ Duane W. Spencer TITLE _____ DATE SEP 18 1998

Archaeological Report to be submitted

Threatened and Endangered Species Report to be submitted

NOTE: This format is issued in lieu of U.S. BLM Form 3160-3

Title 18 U.S.C. Section 1001, makes it a crime for any person knowingly and willfully to make to any department or agency of the United States any false, fictitious or fraudulent statements or presentations as to any matter within its jurisdiction.

NSL-4097@

NMOCB

District I
PO Box 1980, Hobbs, NM 88241-1980

District II
PO Drawer 00, Artesia, NM 88211-0719

District III
1000 Rio Brazos Rd., Aztec, NM 87410

District IV
PO Box 2088, Santa Fe, NM 87504-2088

State of New Mexico
Energy, Minerals & Natural Resources Department

Form C
Revised February 21, 1998
Instructions on 1
Submit to Appropriate District Of
State Lease - 4 Co
Fee Lease - 3 Co

OIL CONSERVATION DIVISION
PO Box 2088
Santa Fe, NM 87504-2088

☐ AMENDED REPORT

WELL LOCATION AND ACREAGE DEDICATION PLAT

*API Number 30-045-29678		*Pool Code 72319	*Pool Name Blanco Mesaverde
*Property Code 6784	*Property Name ALLISON UNIT		*Well Number 53A
*OGRID No. 14538	*Operator Name BURLINGTON RESOURCES OIL & GAS COMPANY		*Elevation 6415'

¹⁰ Surface Location


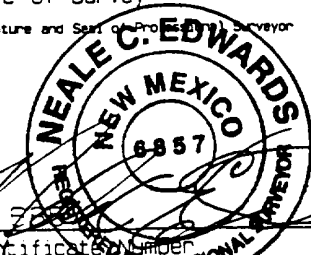
UL or lot no. 0	Section 29	Township 32N	Range 6W	Lot Idn	Feet from the 1045	North/South line SOUTH	Feet from the 2255	East/West line EAST	County SAN JU
--------------------	---------------	-----------------	-------------	---------	-----------------------	---------------------------	-----------------------	------------------------	------------------

¹¹ Bottom Hole Location If Different From Surface

UL or lot no.	Section	Township	Range	Lot Idn	Feet from the	North/South line	Feet from the	East/West line	County
---------------	---------	----------	-------	---------	---------------	------------------	---------------	----------------	--------

¹² Dedicated Acres MV-E/320	¹³ Joint or Infill	¹⁴ Consolidation Code	¹⁵ Order No.
---	-------------------------------	----------------------------------	-------------------------

NO ALLOWABLE WILL BE ASSIGNED TO THIS COMPLETION UNTIL ALL INTERESTS HAVE BEEN CONSOLIDATED OR A NON-STANDARD UNIT HAS BEEN APPROVED BY THE DIVISION

¹⁶ 2654.52' RECEIVED SEP 21 1998 OIL CON. DIV. DIST. 3 2665.74' 2630.10' 2630.76'	29 NMSF-081155 1045' 2623.50'	2593.80' 5247.00' 2255'	¹⁷ OPERATOR CERTIFICATION I hereby certify that the information contained here is true and complete to the best of my knowledge and belief.  Signature Peggy Bradfield Printed Name Regulatory Administrator Title 5-30-98 Date
			¹⁸ SURVEYOR CERTIFICATION I hereby certify that the well location shown on this plat was plotted from field notes of actual surveys made on or under my supervision and that the same is true and correct to the best of my belief. MAY 6, 1998 Date of Survey Signature and Seal of Professional Surveyor  Certification Number

OPERATIONS PLAN

Well Name: Allison Unit #53A
Location: 1045'FSL, 2255'FEL Section 29, T-32-N, R-6-W
San Juan County, New Mexico
Latitude 36° 56.8, Longitude 107° 28.9
Formation: Blanco Mesa Verde
Elevation: 6415'GL

<u>Formation Tops:</u>	<u>Top</u>	<u>Bottom</u>	<u>Contents</u>
Surface	San Jose	2288'	aquifer
Ojo Alamo	2288'	2413'	aquifer
Kirtland	2413'	2811'	
Fruitland	2811'	3182'	
Pictured Cliffs	3182'	3448'	gas
Lewis	3448'	4172'	gas
Intermediate TD	3548'		
Huerfanito Bentonite	4172'	4613'	
Chacra	4613'	5354'	
Massive Cliff House	5354'	5417'	gas
Menefee	5417'	5628'	gas
Massive Point Lookout	5628'		gas
Total Depth	6028'		

Logging Program:

Cased hole logging - Gamma Ray Neutron
Coring/DST - none

Mud Program:

<u>Interval</u>	<u>Type</u>	<u>Weight</u>	<u>Vis.</u>	<u>Fluid Loss</u>
0- 200'	Spud	8.4-9.0	40-50	no control
200-3548'	LSND	8.4-9.0	30-60	no control
3548-6028'	Gas/Mist	n/a	n/a	n/a

Pit levels will be visually monitored to detect gain or loss of fluid control.

Casing Program (as listed, the equivalent, or better):

<u>Hole Size</u>	<u>Depth Interval</u>	<u>Csq. Size</u>	<u>Wt.</u>	<u>Grade</u>
12 1/4"	0' - 200'	9 5/8"	32.3#	H-40
8 3/4"	0' - 3548'	7"	20.0#	J-55
6 1/4"	3448' - 6028'	4 1/2"	10.5#	J-55

Tubing Program:

0' - 6028' 2 3/8" 4.7# J-55

BOP Specifications, Wellhead and Tests:

Surface to Intermediate TD -

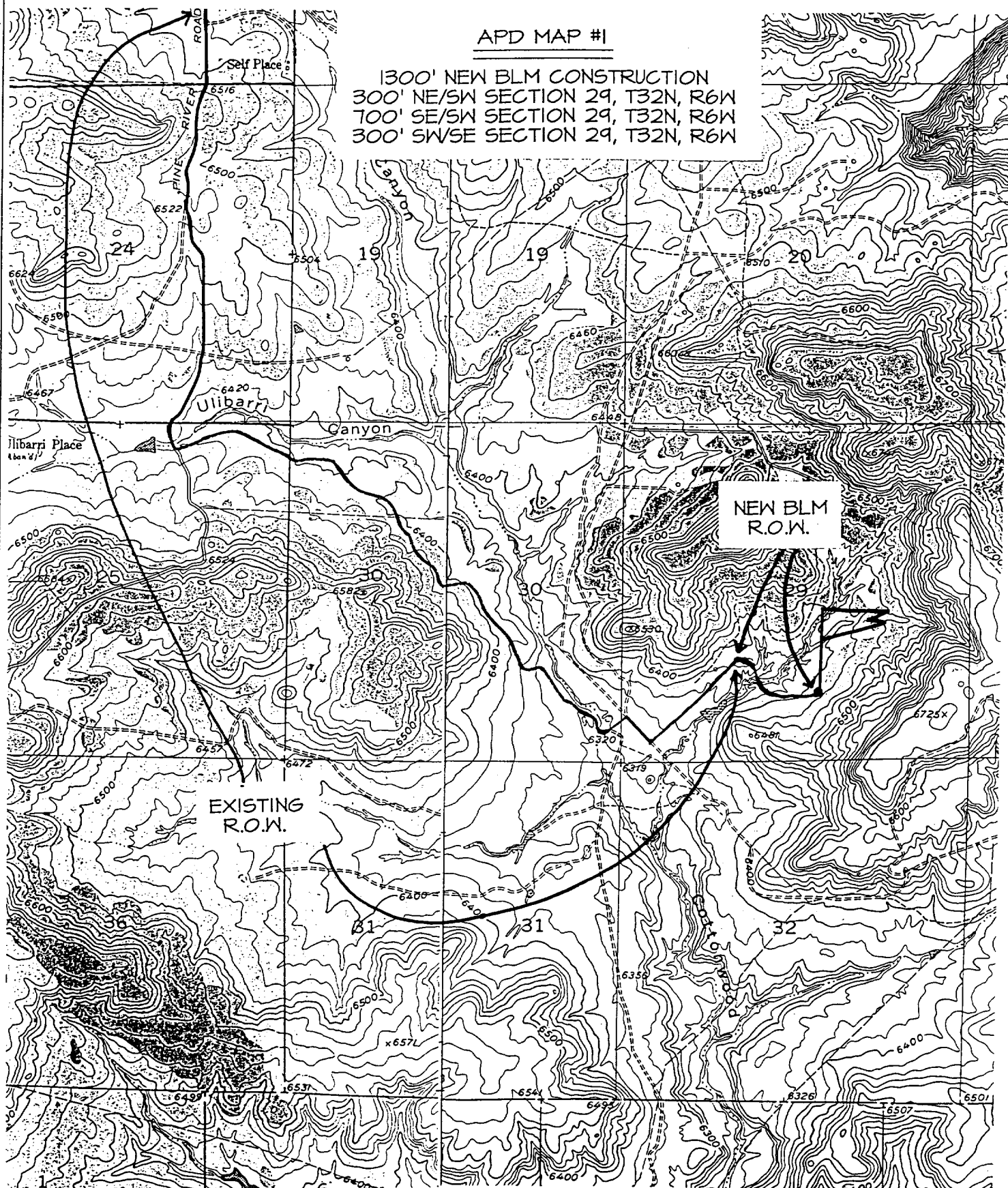
11" 2000 psi minimum double gate BOP stack (Reference Figure #1).
After nipple-up prior to drilling out surface casing, rams and casing will be tested to 600 psi for 30 minutes.

BURLINGTON RESOURCES OIL & GAS COMPANY ALLISON UNIT #53A

1045' FSL & 2255' FEL, SECTION 29, T32N, R6W, N.M.P.M.
SAN JUAN COUNTY, NEW MEXICO

APD MAP #1

1300' NEW BLM CONSTRUCTION
300' NE/SW SECTION 29, T32N, R6W
700' SE/SW SECTION 29, T32N, R6W
300' SW/SE SECTION 29, T32N, R6W





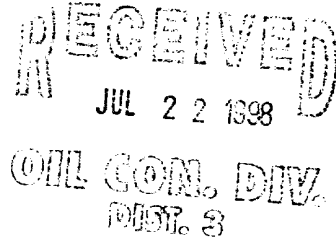
NEW MEXICO ENERGY, MINERALS
& NATURAL RESOURCES DEPARTMENT

OIL CONSERVATION DIVISION
2040 South Pacheco Street
Santa Fe, New Mexico 87505
(505) 827-7131

July 20, 1998

Burlington Resources Oil & Gas Company
P. O. Box 4289
Farmington, New Mexico 87499-4289
Attention: Peggy Bradfield

#53A
29-32-6



Administrative Order NSL-4097

Dear Ms. Bradfield:

Reference is made to your application submitted to the New Mexico Oil Conservation Division ("Division") on July 1, 1998 for an exception to the well location requirements provided within the *"Special Rules and Regulations for the Blanco-Mesaverde Pool,"* as promulgated by Division Order No. R-10987, for a non-standard Blanco-Mesaverde infill gas well location in an existing standard 320-acre stand-up gas spacing and proration unit for the Blanco-Mesaverde Pool comprising the E/2 of Section 29, Township 32 North, Range 6 West, NMPM, San Juan County, New Mexico. This unit is currently dedicated to Burlington Resources Oil & Gas Company's Allison Unit Well No. 53 (API No. 30-045-23134), located at a standard gas well location 1480 feet from the North line and 1800 feet from the East line (Unit G) of Section 29.

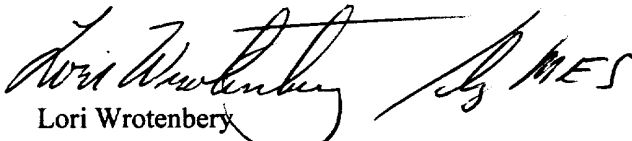
The application has been duly filed under the provisions of Division Rules 104.F and 605.B of the General Rules and Regulations of the New Mexico Oil Conservation Division ("Division").

By the authority granted me under the provisions of Division Rule 104.F(2), the following described well to be drilled at an unorthodox infill Blanco-Mesaverde gas well location in Section 29 is hereby approved:

**Allison Unit Well No. 53-A
1045' FSL & 2255' FEL (Unit O)**

Further, both of the aforementioned Allison Unit Well Nos. 53 and 53-A and existing gas spacing and proration unit will be subject to all existing rules, regulations, policies, and procedures applicable to prorated gas pools in Northwest, New Mexico.

Sincerely,


Lori Wrotenbery
Director

LW/MES/kv

cc: New Mexico Oil Conservation Division - Aztec /
U. S. Bureau of Land Management - Farmington

BURLINGTON RESOURCES

SAN JUAN DIVISION

Sent Federal Express

Ms. Lori Wrotenbery, Director
New Mexico Oil Conservation Division
2040 South Pacheco
Santa Fe, New Mexico 87505

RECEIVED
JUL 1 1998
OIL CON. DIV.
DIST. 3

Re: Allison Unit #53A
1045'FSL, 2255'FEL Section 29, T-32-N, R-6-W, San Juan County, NM
30-045-not assigned

Dear Ms. Wrotenbery:

Burlington Resources is applying for administrative approval of an unorthodox gas well location for the Blanco Mesa Verde pool. This application for the referenced location is for topographic reasons and presence of extreme archaeology.

Production from the Blanco Mesa Verde pool is to be included in a 320 acre gas spacing and proration unit comprising of the east half (E/2) of Section 29 which is currently dedicated to the Allison Unit #53 (30-045-23134) located at 1480'FNL, 1800'FEL of Section 29.

The following attachments are for your review:

1. Application for Permit to Drill.
2. Completed C-102 at referenced location.
3. Offset operators/owners plat.
4. 7.5 minute topographic map, and enlargement of the map to define topographic features.

A copy of this application is being submitted to all offset owners/ operators by certified mail with a request that they furnish you with a Waiver of Objection, and return one copy to this office.

We appreciate your earliest consideration of this application.

Sincerely,



Peggy Bradfield
Regulatory/Compliance Administrator

xc: NMOCD - Aztec District Office
Bureau of Land Management - Farmington District Office
Hallwood Petroleum
Williams Production

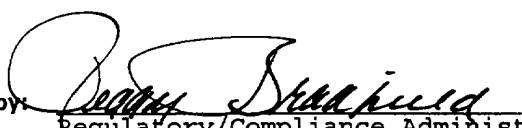
WAIVER

_____ hereby waives objection to Burlington Resources' application for a non-standard location for their Allison Unit #53A as proposed above.

By: _____ Date: _____

UNITED STATES
DEPARTMENT OF THE INTERIOR
BUREAU OF LAND MANAGEMENT

APPLICATION FOR PERMIT TO DRILL, DEEPEN, OR PLUG BACK

1a. Type of Work DRILL	5. Lease Number SF-081155
1b. Type of Well GAS	Unit Reporting Number
2. Operator BURLINGTON RESOURCES Oil & Gas Company	Unit Agreement Name Allison Unit
3. Address & Phone No. of Operator PO Box 4289, Farmington, NM 87499 (505) 326-9700	8. Farm or Lease Name Allison Unit 9. Well Number 53A
4. Location of Well 1045' FSL, 2255' FEL Latitude 36° 56.8, Longitude 107° 28.9	10. Field, Pool, Wildcat Blanco Mesaverde 11. Sec., Twn, Rge, Mer. (NMPM) Sec 29, T-32-N, R-6-W API # 30-045-
14. Distance in Miles from Nearest Town 5 miles to Allison	12. County SJ 13. State NM
15. Distance from Proposed Location to Nearest Property or Lease Line 1045'	17. Acres Assigned to Well 320
16. Acres in Lease	
18. Distance from Proposed Location to Nearest Well, Drlg, Compl, or Applied for on this Lease 1000'	
19. Proposed Depth 6028'	20. Rotary or Cable Tools Rotary
21. Elevations (DF, FT, GR, Etc.) 6415' GR	22. Approx. Date Work will Start
23. Proposed Casing and Cementing Program See Operations Plan attached	
24. Authorized by  Regulatory/Compliance Administrator	Date 5-30-98

PERMIT NO. _____ APPROVAL DATE _____

APPROVED BY _____ TITLE _____ DATE _____

Archaeological Report to be submitted

Threatened and Endangered Species Report to be submitted

NOTE: This format is issued in lieu of U.S. BLM Form 3160-3

Title 18 U.S.C. Section 1001, makes it a crime for any person knowingly and willfully to make to any department or agency of the United States any false, fictitious or fraudulent statements or presentations as to any matter within its jurisdiction.

District I
PO Box 1980, Hobbs, NM 88241-1990

District II
PO Drawer 00, Artesia, NM 88211-0719

District III
2000 Rio Brazos Rd., Aztec, NM 87410

District IV
PO Box 2088, Santa Fe, NM 87504-2088

State of New Mexico
Energy, Minerals & Natural Resources Department

OIL CONSERVATION DIVISION
PO Box 2088
Santa Fe, NM 87504-2088

Form C-
Revised February 21, 1998
Instructions on
Submit to Appropriate District Of
State Lease - 4 Copies
Fee Lease - 3 Copies

☐ AMENDED REPORT

WELL LOCATION AND ACREAGE DEDICATION PLAT

API Number 30-045-		Pool Code 72319	Pool Name Blanco Mesaverde
Property Code 6784	Property Name ALLISON UNIT		Well Number 53A
GRID No. 14538	Operator Name BURLINGTON RESOURCES OIL & GAS COMPANY		Elevation 6415'

10 Surface Location

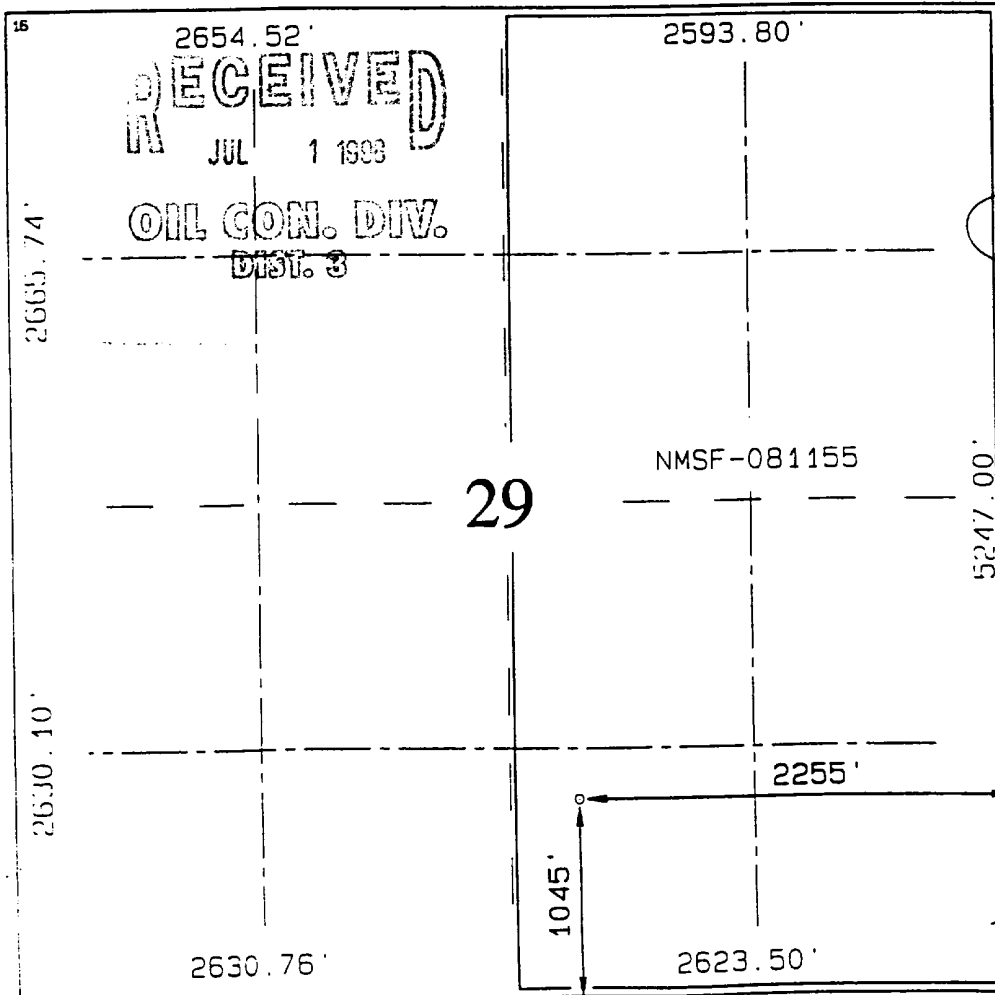
UL or lot no.	Section	Township	Range	Lot Idn	Feet from the	North/South line	Feet from the	East/West line	County
0	29	32N	6W		1045	SOUTH	2255	EAST	SAN JU

11 Bottom Hole Location If Different From Surface

UL or lot no.	Section	Township	Range	Lot Idn	Feet from the	North/South line	Feet from the	East/West line	County

Dedicated Acres MV-E/320	Joint or Infill	Consolidation Code	Order No.
-----------------------------	-----------------	--------------------	-----------

NO ALLOWABLE WILL BE ASSIGNED TO THIS COMPLETION UNTIL ALL INTERESTS HAVE BEEN CONSOLIDATED OR A NON-STANDARD UNIT HAS BEEN APPROVED BY THE DIVISION



17 OPERATOR CERTIFICATION
I hereby certify that the information contained hereon is true and complete to the best of my knowledge and belief.

Peggy Bradfield
Signature

Peggy Bradfield
Printed Name

Regulatory Administrator
Title

5-30-98
Date

18 SURVEYOR CERTIFICATION
I hereby certify that the well location shown on this plat was plotted from field notes of actual surveys made or under my supervision, and that the same is true and correct to the best of my belief.

MAY 6, 1998
Date of Survey

Signature and Seal of Professional Surveyor

NEALE C. EDWARDS
NEW MEXICO
6857
Certification Number
PROFESSIONAL SURVEYOR

OPERATIONS PLAN

Well Name: Allison Unit #53A
Location: 1045' FSL, 2255' FEL Section 29, T-32-N, R-6-W
San Juan County, New Mexico
Latitude 36° 56.8, Longitude 107° 28.9
Formation: Blanco Mesa Verde
Elevation: 6415' GL

<u>Formation Tops:</u>	<u>Top</u>	<u>Bottom</u>	<u>Contents</u>
Surface	San Jose	2288'	aquifer
Ojo Alamo	2288'	2413'	aquifer
Kirtland	2413'	2811'	
Fruitland	2811'	3182'	
Pictured Cliffs	3182'	3448'	gas
Lewis	3448'	4172'	gas
Intermediate TD	3548'		
Huerfanito Bentonite	4172'	4613'	
Chacra	4613'	5354'	
Massive Cliff House	5354'	5417'	gas
Menefee	5417'	5628'	gas
Massive Point Lookout	5628'		gas
Total Depth	6028'		

Logging Program:

Cased hole logging - Gamma Ray Neutron
Coring/DST - none

Mud Program:

<u>Interval</u>	<u>Type</u>	<u>Weight</u>	<u>Vis.</u>	<u>Fluid Loss</u>
0- 200'	Spud	8.4-9.0	40-50	no control
200-3548'	LSND	8.4-9.0	30-60	no control
3548-6028'	Gas/Mist	n/a	n/a	n/a

Pit levels will be visually monitored to detect gain or loss of fluid control.

Casing Program (as listed, the equivalent, or better):

<u>Hole Size</u>	<u>Depth Interval</u>	<u>Csq. Size</u>	<u>Wt.</u>	<u>Grade</u>
12 1/4"	0' - 200'	9 5/8"	32.3#	H-40
8 3/4"	0' - 3548'	7"	20.0#	J-55
6 1/4"	3448' - 6028'	4 1/2"	10.5#	J-55

Tubing Program:

0' - 6028' 2 3/8" 4.7# J-55

BOP Specifications, Wellhead and Tests:

Surface to Intermediate TD -

11" 2000 psi minimum double gate BOP stack (Reference Figure #1).
After nipple-up prior to drilling out surface casing, rams and casing will be tested to 600 psi for 30 minutes.

BOP Specifications, Wellhead and Tests (cont'd):

Intermediate TD to Total Depth -

11" 2000 psi minimum double gate BOP stack (Reference Figure #1).
After nipple-up prior to drilling out intermediate casing, rams
and casing will be tested to 1500 psi for 30 minutes.

Surface to Total Depth -

2" nominal, 2000 psi minimum choke manifold (Reference Figure #3).

Completion Operations -

7 1/16" 2000 psi double gate BOP stack (Reference Figure #2).
After nipple-up prior to completion, pipe rams, casing and liner
top will be tested to 2000 psi for 15 minutes.

Wellhead -

9 5/8" x 7" x 2 3/8" x 2000 psi tree assembly.

General -

- Pipe rams will be actuated once each day and blind rams will be actuated once each trip to test proper functioning.
- An upper kelly cock valve with handle available and drill string valves to fit each drill string will be available on the rig floors at all times.
- BOP pit level drill will be conducted weekly for each drill crew.
- All BOP tests & drills will be recorded in daily drilling reports.
- Blind and pipe rams will be equipped with extension hand wheels.

Cementing:

9 5/8" surface casing - cement with 163 sx Class "B" cement with 1/4# flocele/sx and 3% calcium chloride (188 cu.ft. of slurry, 200% excess to circulate to surface). WOC 8 hrs. Test casing to 600 psi for 30 minutes.

Saw tooth guide shoe on bottom. Bowspring centralizers will be run in accordance with Onshore Order #2.

7" intermediate casing -

Lead w/286 sx Class "B" w/3% econolite, 10# gilsonite/sx and 1/2# flocele/sx. Tail w/90 sx 50/50 Class "B" Poz w/2% gel, 2% calcium chloride, 0.5# flocele/sx, and 10# gilsonite/sx (933 cu.ft. of slurry, 75% excess to circulate to surface.) WOC minimum of 8 hours before drilling out intermediate casing. If cement does not circulate to surface, a CBL will be run to determine TOC. Test casing to 1500 psi for 30 minutes.

Cement nose guide shoe on bottom with float collar spaced on top of shoe joint. Bowspring centralizers spaced every other joint off bottom, to the base of the Ojo Alamo at 2413'. Two turbolating centralizers at the base of the Ojo Alamo at 2413'. Bowspring centralizers spaced every fourth joint from the base of the Ojo Alamo to the base of the surface casing.

4 1/2" Production Liner -

Cement to circulate liner top. Cement with 279 sx 50/50 Class "B" Poz w/2% gel, 1/4# flocele/sx, 5# gilsonite/sx and 0.3% fluid loss additive (371 cu.ft., 40% excess to circulate liner top). WOC a minimum of 18 hrs prior to completing.

Cement nose guide shoe on bottom with float collar spaced on top of shoe joint. The liner hanger will have a rubber packoff.

- If hole conditions permit, an adequate water spacer will be pumped ahead of each cement job to prevent cement/ mud contamination or cement hydration.
- The pipe will be rotated and/or reciprocated, if hole conditions permit.

Special Drilling Operations (Gas/Mist Drilling):

The following equipment will be operational while gas/mist drilling:

- An anchored blooie line will be utilized to discharge all cuttings and circulating medium to the blow pit a minimum of 100' from the wellhead.
- The blooie line will be equipped with an automatic igniter or pilot light.
- Compressors will be located a minimum of 100' from the wellhead in the opposite direction from the blooie line.
- Engines will have spark arresters or water cooled exhaust.
- The rotating head will be properly lubricated and maintained.
- A float valve will be utilized above the bit.
- Mud circulating equipment, water, and mud materials will be sufficient to maintain control of the well.

Additional Information:

- The Mesa Verde formation will be completed.
- No abnormal temperatures or hazards are anticipated.
- Anticipated pore pressures are as follows:

Fruitland Coal	300 psi
Pictured Cliffs	500 psi
Mesa Verde	700 psi
- Sufficient LCM will be added to the mud system to maintain well control, if lost circulation is encountered below the top of the Pictured Cliffs.
- The east half of the section is dedicated to the Mesa Verde.
- This gas is dedicated.


Drilling Engineer5/5/98
Date

BURLINGTON RESOURCES

Allison Unit #53A Multi-Point Surface Use Plan

1. Existing Roads - Refer to Map No. 1. Existing roads used to access the proposed location will be properly maintained for the duration of the project. Bureau of Land Management right-of-way has been applied for as shown on Map No. 1.
2. Planned Access Road - Refer to Map No. 1. The required new access road is shown on Map No. 1. The gradient, shoulder, crowning and other design elements will meet or exceed those specified by the responsible government agency. The new access road surface will not exceed twenty feet (20') in width. No additional turnarounds or turnouts will be required. Upon completion of the project, the access road will be adequately drained to control soil erosion. Approximately 1300' of access road will be constructed. Pipelines are indicated on Map No. 1A.
3. Location of Existing Wells - Refer to Map No. 1A.
4. Location of Existing and/or Proposed Facilities if Well is Productive -
 - a. On the Well Pad - Refer to Plat No. 1, anticipated production facilities plat.
 - b. Off the Well Pad - Anticipated pipeline facilities as shown on the attached plat from Williams Field Service.
5. Location and Type of Water Supply - Water will be hauled by truck for the proposed project and will be obtained from Faverino Ditch located in NE/4 Section 12, T-32-N, R-7-W, New Mexico
6. Source of Construction Materials - If construction materials are required for the proposed project, such materials will be obtained from a commercial quarry.
7. Methods of Handling Waste Materials - All garbage and trash materials will be removed from the site for proper disposal. A portable toilet will be provided for human waste and serviced in a proper manner. If liquids are left in the reserve pit after completion of the project, the pit will be fenced until the liquids have had adequate time to dry. The location clean-up will not take place until such time as the reserve pit can be properly covered over to prevent run-off from carrying waste materials into the watershed. Reserve pits will be lined as needed with either 12 mil bio-degradable plastic liner or a bentonite liner. All earthen pits will be so constructed as to prevent leakage from occurring; no earthen pit will be located on natural drainage. Generation of hazardous waste is not anticipated. Federal regulations will be adhered to regarding handling and disposal of such waste if so generated.
8. Ancillary Facilities - None anticipated.
9. Wellsite Layout - Refer to the location diagram and to the wellsite cut and fill diagram (Figure No. 4). The blow pit will be constructed with a 2'/160' grade to allow positive drainage to the reserve pit and prevent standing liquids in the blow

10. Plans for Restoration of the Surface - After completion of the proposed project, the location will be cleaned and leveled. The location will be left in such a condition that will enable reseeding operations to be carried out. Seed mixture as designated by the responsible government agency will be used. The reseeding operations will be performed during the time period set forth by the responsible government agency. The permanent location facilities will be painted as designated by the responsible government agency.
11. Surface Ownership – Bureau of Land Management
12. Other Information - Environmental stipulations as outlined by the responsible government agency will be adhered to. Refer to the archaeological report for a description of the topography, flora, fauna, soil characteristics, dwellings, historical and cultural sites.
13. Operator's Representative and Certification - Burlington Resources Oil & Gas Company Regional Drilling Manager, Post Office Box 4289, Farmington, NM 87499, telephone (505) 326-9700. I hereby certify that I, or persons under my direct supervision, have inspected the proposed drill site and access route; that I am familiar with the conditions which presently exist; that the statements made in this plan, are to the best of my knowledge, true and correct; and that the work associated with the operations proposed herein will be performed by Burlington Resources Oil and Gas Company and its contractors and subcontractors in conformity with this plan and the terms and conditions under which it is approved.

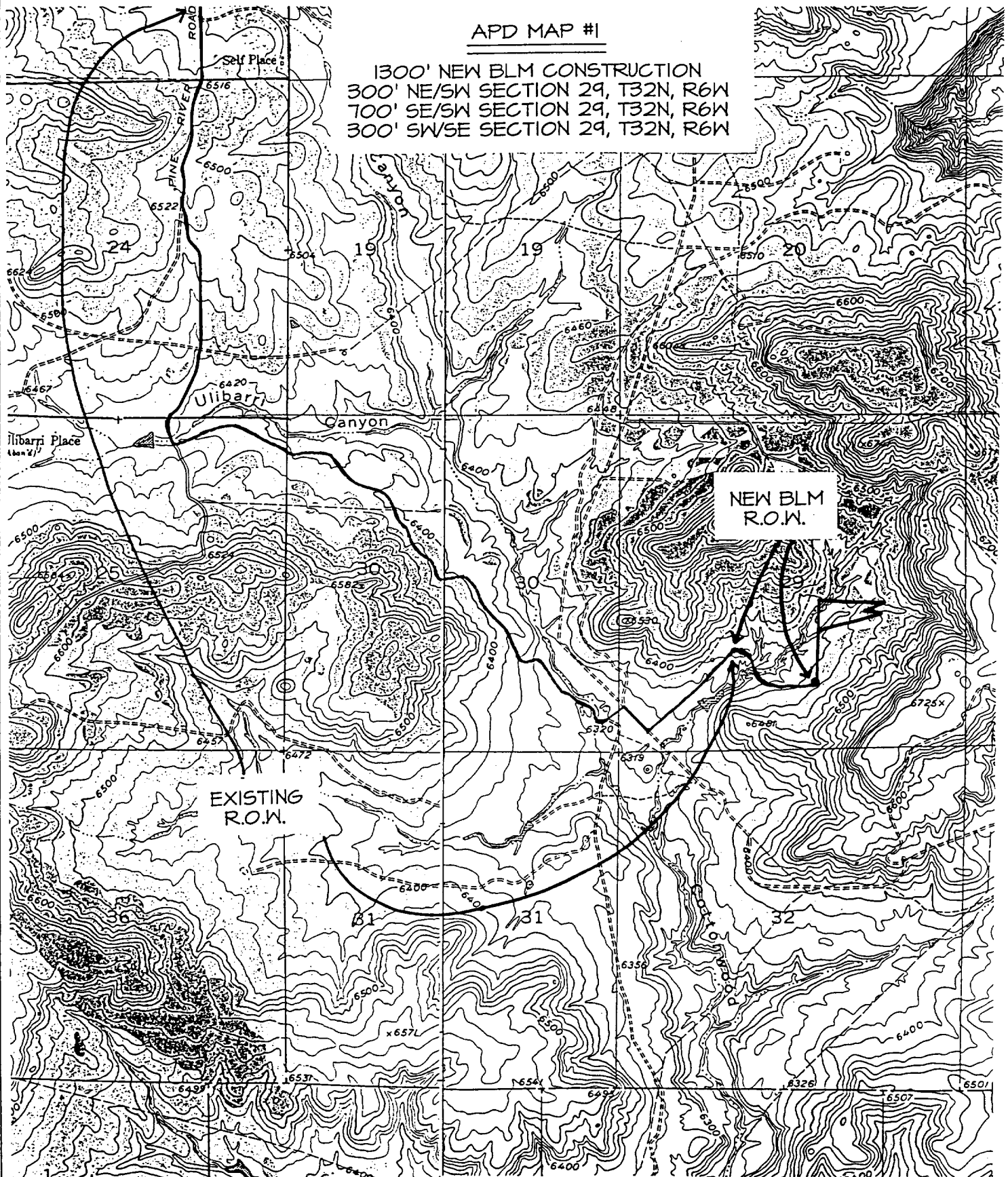

Regulatory/Compliance Administrator 5-30-98
Date

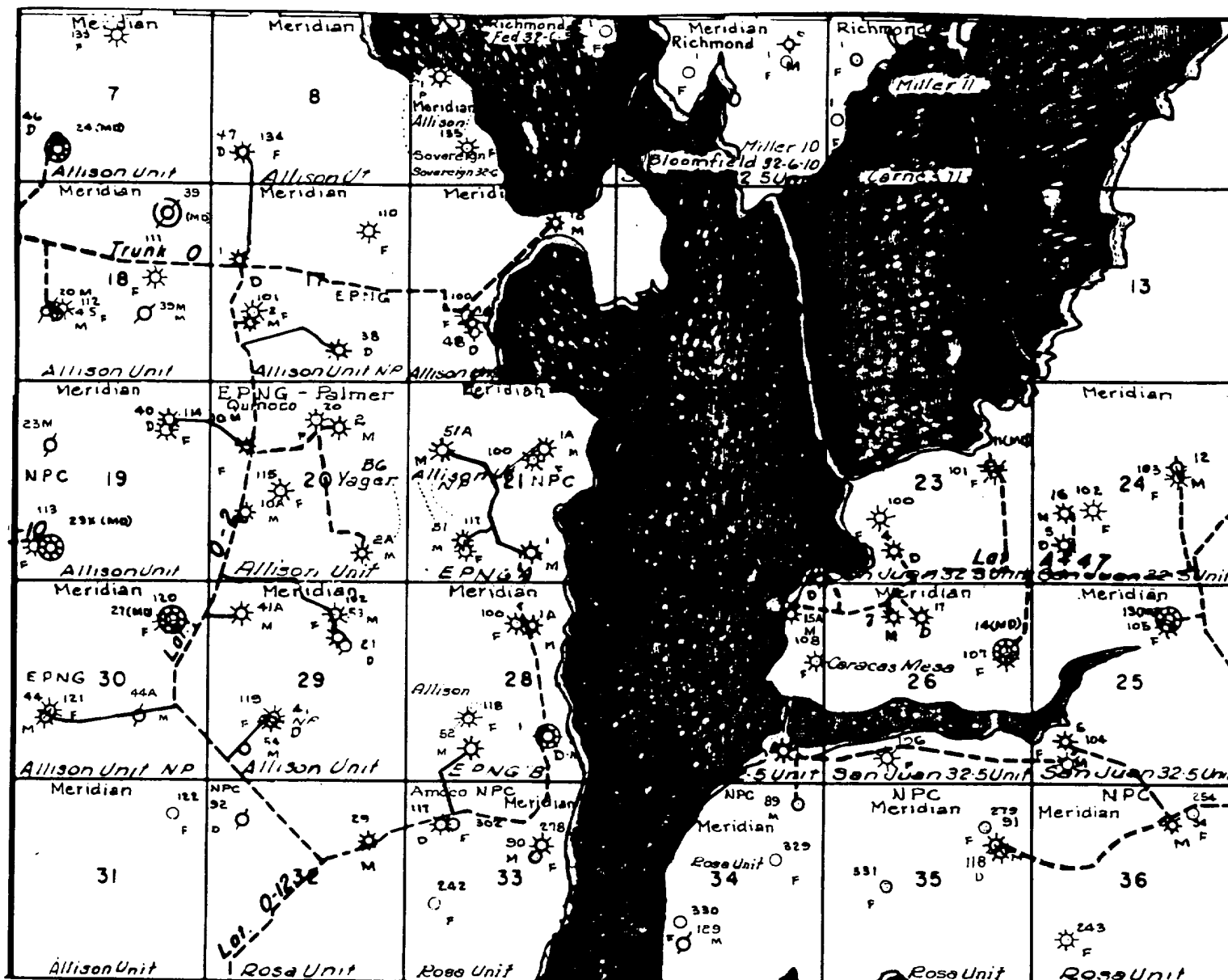
BURLINGTON RESOURCES OIL & GAS COMPANY ALLISON UNIT #53A

1045' FSL & 2255' FEL, SECTION 29, T32N, R6W, N.M.P.M.
SAN JUAN COUNTY, NEW MEXICO

APD MAP #1

1300' NEW BLM CONSTRUCTION
300' NE/SW SECTION 29, T32N, R6W
700' SE/SW SECTION 29, T32N, R6W
300' SW/SE SECTION 29, T32N, R6W

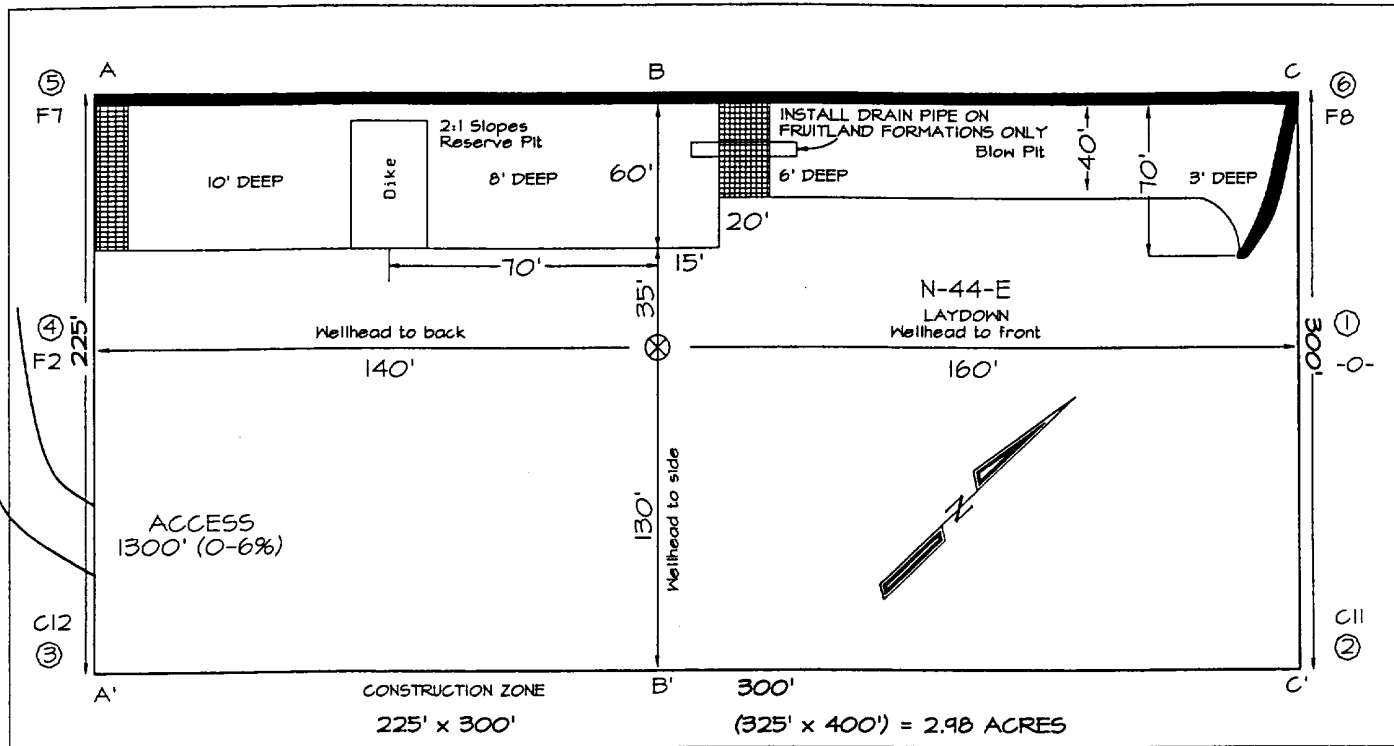




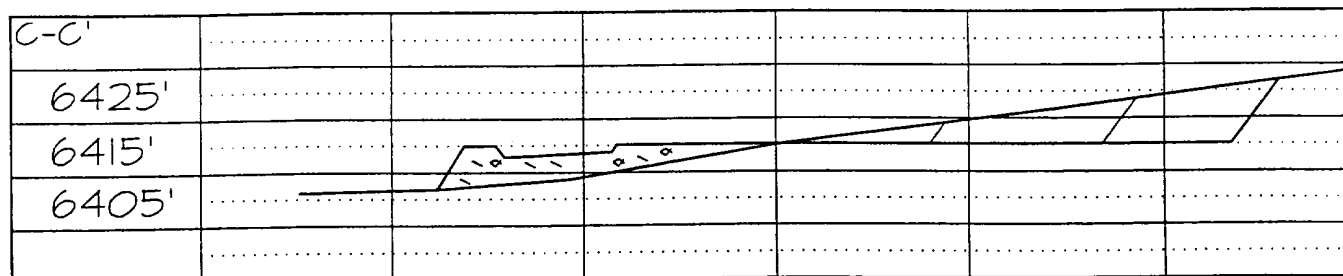
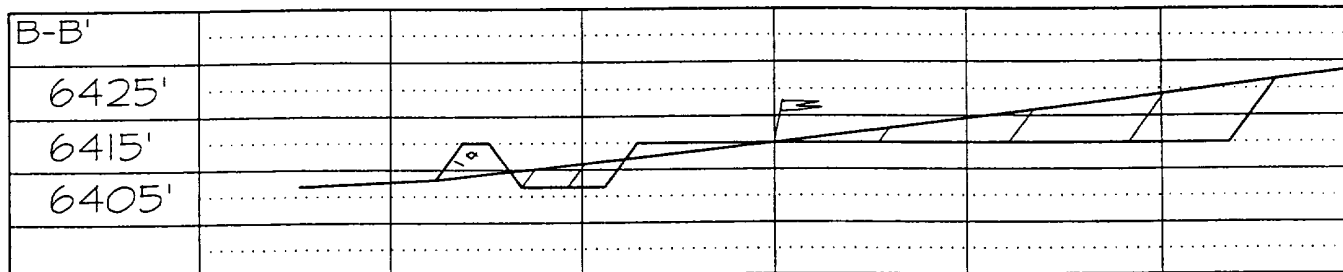
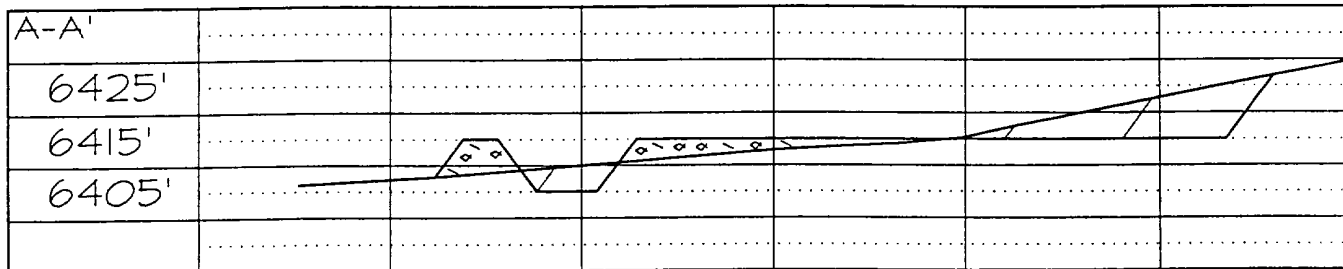
MERIDIAN OIL INC.
 Pipeline Map
 T-32-N, R-06-W
 San Juan County, New Mexico
 Allison Unit #53A
 Map 1A

PLAT #1

BURLINGTON RESOURCES OIL & GAS COMPANY
ALLISON UNIT #53A, 1045' FSL & 2255' FEL
SECTION 29, T32N, R6W, NMPM, SAN JUAN COUNTY, NEW MEXICO
GROUND ELEVATION: 6415' DATE: MAY 6, 1998



Reserve Pit Dike: to be 8' above Deep side (overflow - 3' wide and 1' above shallow side).
 Blow Pit: overflow pipe halfway between top and bottom and to extend over plastic liner and into blow pit.



Note: Contractor should call One-Call for location of any marked or unmarked buried pipelines or cables on well pad and/or access road at least two (2) working days prior to construction

BURLINGTON RESOURCES OIL AND GAS COMPANY

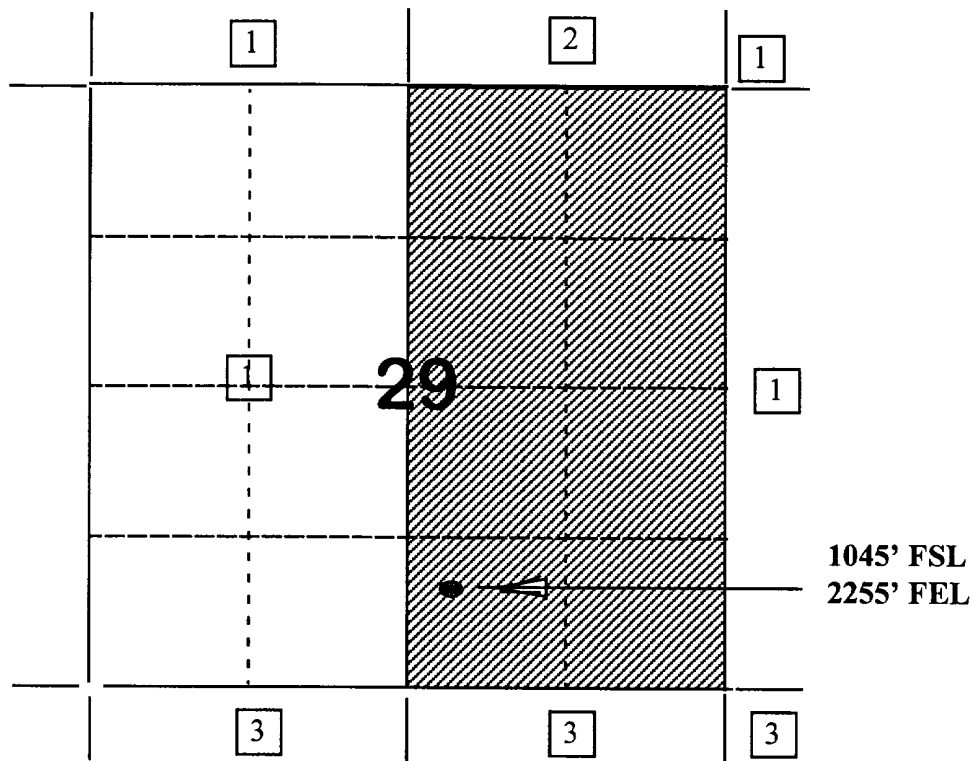
Allison Unit #53A

OFFSET OPERATOR/OWNER PLAT

Mesaverde Formations

Nonstandard Location

Township 32 North, Range 6 West



1) Burlington Resources

2) Hallwood Petroleum Inc.
4582 S. Ulster Street Pkwy.,
Ste. 1700
Denver, CO 80237

3) Williams Production Company
Mailstop 374
P.O. Box 3102
Tulsa, OK 74101

Re: Allison Unit #53A
1045'FSL, 2255'FEL Section 29, T-32-N, R-6-W, San Juan County, NM
30-045-not assigned

I hereby certify that the following offset operators/owners have been mailed notification of our application for non-standard location to drill the referenced well.

Hallwood Petroleum Inc.
4582 South Ulster Street Parkway
Suite 1700
Denver, CO 80237

Williams Production Company
Mailstop 37-4
PO Box 3102
Tulsa, OK 74101

 6/29/98
Peggy Bradfield
Regulatory/Compliance Administrator

