

UNITED STATES
DEPARTMENT OF THE INTERIOR
BUREAU OF LAND MANAGEMENTSubmit 8 FOR Tribal
Interest, 7 FOR BLM*
(Other instructions on
reverse side)FORM APPROVED
Budget Bureau No. 1004-0136
Expires: February 28, 1995

JAN 05 1999

APPLICATION FOR PERMIT TO DRILL OR DEEPEN

1a. Type of Work DRILL <input checked="" type="checkbox"/> DEEPEN <input type="checkbox"/>		5. LEASE DESIGNATION AND SERIAL NO. Ute 14-20-0604-0078	
1b. TYPE OF WELL OIL WELL <input type="checkbox"/> GAS WELL <input checked="" type="checkbox"/> OTHER <input type="checkbox"/> Single <input checked="" type="checkbox"/> Multiple <input type="checkbox"/> Zone Zone		6. IF INDIAN, ALLOTTEE OR TRIBE NAME Ute Mountain Ute Tribe	
2. NAME OF OPERATOR Cross Timbers Operating Company		7. UNIT AGREEMENT NAME	
3. ADDRESS AND TELEPHONE NO. 6001 Highway 64, Farmington, NM 87401 915/682-8873 Mark Gosch		8. FARM OR LEASE NAME, WELL NO. <u>22846</u> UTE MOUNTAIN TRIBAL J #7	
4. LOCATION OF WELL (Report location clearly and in accordance with any State requirements.) At Surface: 575'FNL - 625' FWL At proposed prod. zone>		9. API WELL NO. 30-045-29864	
14. DISTANCE IN MILES AND DIRECTIONS FROM NEAREST TOWN OR POST OFFICE Please see attached Surface Use Program.		10. FIELD AND POOL, OR WILDCAT Ute Dome Paradox EXT	
15. DISTANCE FROM PROPOSED* LOCATION TO NEAREST PROPERTY OR LEASE LINE, FT. (Also to nearest drlg. Unit line, if any.) 575'		11. SEC., T., R., OR BLK AND SURVEY OR AREA Sec. 12, T31N-R14W	
16. NO. OF ACRES ASSIGNED TO THIS WELL 640 679.82		12. COUNTY OR PARISH San Juan County	
18. DISTANCE FROM PROPOSED* LOCATION TO NEAREST WELL, DRILLING, COMPLETED OR APPLIED FOR, ON THIS LEASE, FT. 8700'		13. STATE NM	
21. ELEVATIONS (Show whether DF, RT, GR, etc.) 6108' G.L.		20. ROTARY OR CABLE TOOLS Rotary	
23. PROPOSED CASING AND CEMENTING PROGRAM		22. APPROX. DATE WORK WILL START* 1/99	

SIZE OF HOLE	GRADE, SIZE OF CASING	WEIGHT PER FOOT	SETTING DEPTH	QUANTITY OF CEMENT
12-1/4"	J-55, 8-5/8"	24#	850'	360 sxs Surf
7-7/8"	J-55, 4-1/2"	10.5#	8700'	1300 sxs Surf

Surface Lead: 260 sx of 35:65 Pozmix/Class 'H' cement w/8% Gel, 6 pps Gilsonite, 7 1/4 pps Celloflake (11.8 ppg, 2.26 cu.ft./sx, 12.32 gal/sx wtr.). Tail: 100 sx Class 'H' cement w/2% CaCl (15.6 ppg, 1.20 cu.ft./sx, & 5.25 gal/sx wtr.).

Production 1st Stage Lead: 700 sx of Class 'H' cement w/0.6% FL-52 (15.6 PPG, 1.18 cu.ft./sx, 7 5.21 gal/sx wtr.) Estimate TOC @ +/-6000'. 2nd Stage Lead: 450 sx of 35:65 Pozmix/Class 'H' cement w/8% gel, 6 pps Gilsonite and 1/4 pps Celloflake)11.9 ppg, 2.26 cu.ft./sx, & 5.25 gal/sx wtr.). top of tail slurry to be +/-2500'.

Remarks: Use 20% excess over volume calculated from open hole logs to bring cement to +/-6000' on the 1st stage & to the surface on the 2nd stage.

IN ABOVE SPACE DESCRIBE PROPOSED PROGRAM: If proposal is to deepen, give data on present productive zone and proposed new productive zone. If proposal is to drill or deepen directionally, give pertinent data on subsurface locations and measured and true and vertical depths. Give blowout preventer program, if any.

24. SIGNED: Gary L. Markestad TITLE Gary L. Markestad, P.E., VP Production DATE: Jan 4, 1999

(This space for Federal or State office use)

Permit Number:

Approval Date:

Application approval does not warrant or certify that the applicant holds legal or equitable title to the subject lease which would entitle the applicant to operations thereon.

CONDITIONS OF APPROVAL, IF ANY

SEE ATTACHED
CONDITIONS OF APPROVALAPPROVED FOR A PERIOD
NOT TO EXCEED 1 YEAR.APPROVED BY Ilyse K. AuringerTITLE MINERALS STAFF CHIEFDATE MAR 1 1999

Title 18 U.S.C. Section 1001, makes it a crime for any person knowingly and willfully to make to any department or agency of the United States any false, fictitious or fraudulent statements or representations as to any matter within its jurisdiction.

* See instruction on Reverse Side

HOLD C104 FOR NSL

REMOVED

District I
PO Box 1980, Hobbs, NM 88241-1980

State of New Mexico
Energy, Minerals & Natural Resources Department

Form C-102
Revised February 21, 1994

District II
PO Drawer DD, Artesia, NM 88211-0719

OIL CONSERVATION DIVISION
PO Box 2088
Santa Fe, NM 37504-2088

Submit to Appropriate District Office
State Lease - 4 Copies
Fee Lease - 3 Copies

District III
1000 Rio Brazos Rd., Aztec, NM 87410

District IV
PO Box 2088, Santa Fe, NM 87504-2088

☐ AMENDED REPORT

WELL LOCATION AND ACREAGE DEDICATION PLAT

*API Number 30-045-29864	*Pool Code 86760	*Pool Name UTE DOME PARADOX EXT
*Property Code 22846	*Property Name UTE MOUNTAIN TRIBAL J	*Well Number 7
*OGRID No. 167067	*Operator Name CROSS TIMBERS OPERATING COMPANY	*Elevation 6108'


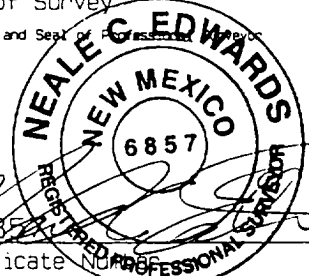
¹⁰ Surface Location

UL or lot no.	Section	Township	Range	Lot Idn	Feet from the	North/South line	Feet from the	East/West line	County
D	12	31N	14W		575	NORTH	625	WEST	SAN JUAN

¹¹ Bottom Hole Location If Different From Surface

UL or lot no.	Section	Township	Range	Lot Idn	Feet from the	North/South line	Feet from the	East/West line	County
¹² Dedicated Acres 640.679.82		¹³ Joint or Infill		¹⁴ Consolidation Code		¹⁵ Order No.			

NO ALLOWABLE WILL BE ASSIGNED TO THIS COMPLETION UNTIL ALL INTERESTS HAVE BEEN CONSOLIDATED
OR A NON-STANDARD UNIT HAS BEEN APPROVED BY THE DIVISION

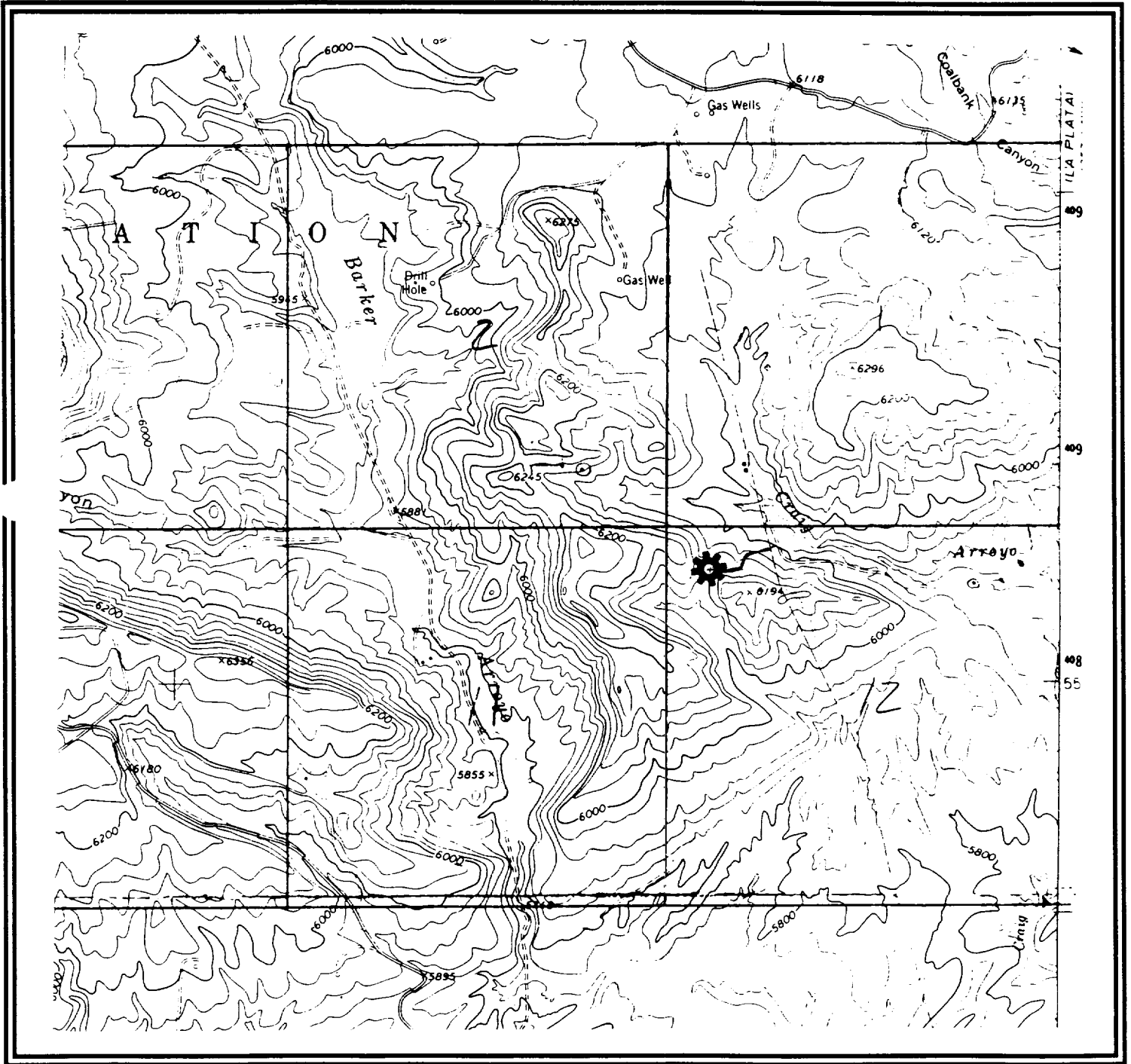
¹⁵ 2640.00' 575' 625' 5280.00'	1	1320.00'	1684.32'	¹⁷ OPERATOR CERTIFICATION I hereby certify that the information contained herein is true and complete to the best of my knowledge and belief.  Signature Gary L. Markestad Printed Name Vice President/Production Title Date 1/4/98	
	2				¹⁸ SURVEYOR CERTIFICATION I hereby certify that the well location shown on this plat was plotted from field notes of actual surveys made by me or under my supervision, and that the same is true and correct to the best of my belief. SEPTEMBER 21, 1998 Date of Survey Signature and Seal of Professional Surveyor  Certificate No. 6857
	3				
	4				
2640.00'	12	1320.00'	1613.04'		

CROSS TIMBERS OPERATING COMPANY

UTE MOUNTAIN TRIBAL J #5

575' FNL- 625' FWL, Sec. 12, T31N-R14W

Proposed Ute Dome Paradox Well



Catch 10' samples from 6,500' to 8,700' (TD). Send 1 set of dry samples to CTOC in Ft. Worth.

Open Hole	Resistivity	
	Array Induction/GR/SP/Cal	Bottom of Surface Casing to TD.
	Porosity	
	Compensated Neutron-Lithodensity/GR/Cal/Pe	2,400' – 3,000'
		6,500' – 8,700'
Other		
	Microlog	6,500' – 8,700'

7. FORMATION TOPS:

Formation	Subsea Depth	Well Depth
Point Lookout Ss	+5530'	592'
Mancos Shale	+5250'	872'
Gallup	+4330'	1792'
Greenhorn Shale	+3636	2486'
Graneros Shale	+3575'	2547'
Dakota Ss	+3500'	2622'
Burro Canyon Ss	+3324'	2798'
Morrison Ss	+3264'	2858'
Entrada Ss	+2540'	3582'
Chinle	+2077'	4045'
Permian, Cutler	+1142'	4980'
Pennsylvanian, Hermosa	-540'	6662'
Paradox Formation		
Ismay	-1575'	7697'
Desert Creek	-1768'	7890'
Akah	-1900'	8022'
Barker Creek	-2070'	8192'
Lower Barker Creek	-2230'	8352'
Alkalai Gulch	-2300'	8690'
Molas	-2568'	8690'
TD	-2578'	8700'