

UNITED STATES
DEPARTMENT OF THE INTERIOR

Submit 8 FOR Tribal
Interest, 7 for BLM*
(Other Instructions on
reverse side)

FORM APPROVED
Budget Bureau No. 1004-0136
Expires: February 28, 1995

BUREAU OF LAND MANAGEMENT

REISSUED

APPLICANT **DESTROY PREVIOUS COPY** RECEIVED

5. LEASE DESIGNATION AND SERIAL NO.
Ute 14-20-604-62

6. IF INDIAN, ALLOTTEE OR TRIBE NAME
Ute Mountain Ute Indian Tribe

7. UNIT AGREEMENT NAME

22645

1a. Type of Work **DRILL** ☒ **DEEPEN** ☐ FEB 17 1999

1b. TYPE OF WELL

OIL WELL ☐ GAS WELL ☒ OTHER ☐

Single
Zone

Bureau of Land Management
Durango Colorado

8. FARM OR LEASE NAME, WELL NO.

UTE INDIANS A #26

2. NAME OF OPERATOR

Cross Timbers Operating Company

3. ADDRESS AND TELEPHONE NO.

6001 Highway 64 Farmington, NM 87401 915-682-8873 Mark Gesch

4. LOCATION OF WELL (Report location clearly and in accordance with any State requirements)

At Surface: 802 570' FSL - 1045' FEL

At proposed prod. zone: 570' FSL - 1450' FEL

OIL CON. DIV
DIST. 3

9. API WELL NO.

30-045-29868

10. FIELD AND POOL, OR WILDCAT
Ute Dome Paradox

11. SEC., T., R., OR BLK
AND SURVEY OR AREA
Sec. 2, T31N-R14W

14. DISTANCE IN MILES AND DIRECTIONS FROM NEAREST TOWN OR POST OFFICE*

Approximately 7.7 miles to La Plata, New Mexico. Use Program for further details.

12. COUNTY OR PARISH
San Juan County

13. STATE
NM

15. DISTANCE FROM PROPOSED* LOCATION TO
NEAREST PROPERTY OR LEASE LINE, FT. (Also
to nearest drlg. Unit line, if any.)

570'

16. NO. OF ACRES IN LEASE
thereof and other holders of operating
rights hold legal or equitable title
to those rights in the subject lease
which are committed hereto...

17. NO. OF ACRES ASSIGNED TO THIS WELL

640 ACRES

18. DISTANCE FROM PROPOSED* LOCATION TO
NEAREST WELL, DRILLING, COMPLETED OR APPLIED
FOR, ON THIS LEASE, FT.

570'

19. PROPOSED DEPTH

8800'

20. ROTARY OR CABLE TOOLS

Rotary

21. ELEVATIONS (Show whether DF, RT, GR, etc.)

6082' g.l.

Venting / Flaring approved for 30 days
per NTL-44

22. APPROX. DATE WORK WILL START
12/98

23. PROPOSED CASING AND CEMENTING PROGRAM

SIZE OF HOLE	GRADE, SIZE OF CASING	WEIGHT PER FOOT	SETTING DEPTH	QUANTITY OF CEMENT
12-1/4"	J-55, 8-5/8"	24#	850'	360 sx
7-7/8"	N-80, 4-1/2"	11.6#	8800'	1300 sx

Surface 8-5/8", 24#, J-55, STC casing at 850'.
Lead: 260 sx of 35:65 Pozmix/Class "H" cement w/ 8% Gel, 6 pps Gilsonite, & 1/4 pps Celloflake (11.8 ppg, 2.26 cu.ft./sx, 12.32 gal/sx wtr.).

Tail: 100 sx Class "H" cement w/ 2% CaCl (15.6 ppg, 1.20 cu.ft./sx, & 5.25 gal/sx wtr.).

Production 4-1/2", 11.6, N-80, STC casing at 8,800', w/ DVT @ 3,000'

First Stage: Lead - 700 sx of Class "H" cement w/ 0.6% FL-52 (15.6 ppg, 1.18 cu.ft./sx, & 5.21 gal/sx wtr.) Estimate TOC @ +/- 6000'.

Second Stage: Lead - 350 sx of 35:65 Pozmix/Class "H" cement w/ 8% Gel, 6 pps Gilsonite and 1/4 pps Celloflake (11.8 ppg, 2.26 cu.ft./sx, & 12.32 gal/sx wtr.).

Tail - 150 sx of Class "H" cement (15.6 ppg, 1.18 cu.ft./sx, & 5.23 gal/sx wtr.). Top of tail slurry to be +/-2500'.

Remarks: Use 20% excess over volume calculated from open hole logs to bring cement to +/-6000' on the first stage and to the surface on the second stage.

IN ABOVE SPACE DESCRIBE PROPOSED PROGRAM: If proposal is to deepen, give data on present productive zone and proposed new productive zone. If proposal is to drill or deepen directionally, give pertinent data on subsurface locations and measured and true and vertical depths. Give blowout preventer program, if any.

24.

SIGNED:

Gary L. Markestad

TITLE Gary L. Markestad, P.E. VP Production

DATE: 1/5/99

(This space for Federal or State office use)

Permit Number:

Application approval does not warrant or certify that the applicant holds title to the land or that the proposed operations thereon are lawful.

CONDITIONS OF APPROVAL, IF ANY

APPROVED BY /s/ JOHN L. PECOR

ACTING

TITLE

MINERALS STAFF CHIEF

APPROVED FOR A PERIOD
NOT TO EXCEED 1 YEAR.

MAR 9 1999

DATE

R-11132 Q

WMOCD

District I
PO Box 1980, Hobbs, NM 88241-1980

State of New Mexico
Energy, Minerals & Natural Resources Department

Form C-102
Revised February 21, 1994

District II
PO Drawer DD, Artesia, NM 88211-0719

OIL CONSERVATION DIVISION
PO Box 2088
Santa Fe, NM 87504-2088

Instructions on back
Submit to Appropriate District Office
State Lease - 4 Copies
Fee Lease - 3 Copies

District III
1000 Rio Brazos Rd., Aztec, NM 87410

District IV
PO Box 2088, Santa Fe, NM 87504-2088

☐ AMENDED REPORT

WELL LOCATION AND ACREAGE DEDICATION PLAT

*API Number 30045-29868	*Pool Code 86760	*Pool Name UTE DOME PARADOX
*Property Code 22645	*Property Name UTE INDIANS A	*Well Number 26
*GRID No. 167067	*Operator Name CROSS TIMBERS OPERATING COMPANY	*Elevation 6082'

¹⁰ Surface Location

UL or lot no.	Section	Township	Range	Lot Idn	Feet from the	North/South line	Feet from the	East/West line	County
P	2	31N	14W		570	SOUTH	1045	EAST	SAN JUAN

¹¹ Bottom Hole Location If Different From Surface

UL or lot no.	Section	Township	Range	Lot Idn	Feet from the	North/South line	Feet from the	East/West line	County
0	2	31N	14W		850	SOUTH	1450	EAST	SAN JUAN
¹² Dedicated Acres 640		¹³ Joint or Infill		¹⁴ Consolidation Code		¹⁵ Order No. 1022			

NO ALLOWABLE WILL BE ASSIGNED TO THIS COMPLETION UNTIL ALL INTERESTS HAVE BEEN CONSOLIDATED
OR A NON-STANDARD UNIT HAS BEEN APPROVED BY THE DIVISION

¹⁶ 5280.00'		¹⁷ OPERATOR CERTIFICATION I hereby certify that the information contained herein is true and complete to the best of my knowledge and belief Signature Gary L. Markestad Printed Name Vice-President / Production Title Date	
1323.96'		1323.96'	
1320.00'		1320.00'	
2640.00'		2640.00'	
5280.00'		5280.00'	
BOTTOM HOLE LOCATION		SURFACE LOCATION	
1450'		1045'	
850'		570'	
2		NEALE C. EDWARDS NEW MEXICO 6857 REGISTERED PROFESSIONAL SURVEYOR Certificate Number 6857	

6. LOGGING PROGRAM:

Mud Logger Two man logging unit, on at 2,000'.

Catch 10' samples from 2,800' to 3,800' TVD.

Catch 30' samples from 3,800' to 6,400' TVD.

Catch 10' samples from 6,400' to 8,800' TVD.

Send 1 set of dry samples to CTOC in Ft. Worth.

Open Hole Resistivity

Array Induction/GR/SP/Cal

Bottom of Surface Casing to TD.

Porosity

Compensated Neutron-Lithodensity/GR/Cal/Pe

2,200' – 3,000' TVD

6,500' – 8,800' TVD

Other

FMI

6,500' – 8,800' TVD

7. FORMATION TOPS:

Formation	Subsea Depth	Well Depth TVD
Mancos Shale	+5500'	596'
Gallup	+4450'	1646'
Greenhorn Shale	+3866	2233'
Grancros Shale	+3803'	2293'
Dakota Ss	+3740'	2356'
Burro Canyon Ss	+3550'	2546'
Morrison Ss	+3480'	2616'
Entrada Ss	+2600'	3496'
Chinle	+2150'	3946'
Permian, Cutler	+1215'	4881'
Pennsylvanian, Hermosa	-437'	6533'
Paradox Formation	-1472'	7568'
Ismay	-1646'	7742'
Desert Creek	-1780'	7876'
Akah	-1976'	8072'
Barker Creek	-2129'	8225'
Lower Barker Creek	-2198'	8294'
Alkalai Gulch	-2470'	8566'
Molas	-2704'	8800'
TD	-2704'	8800'

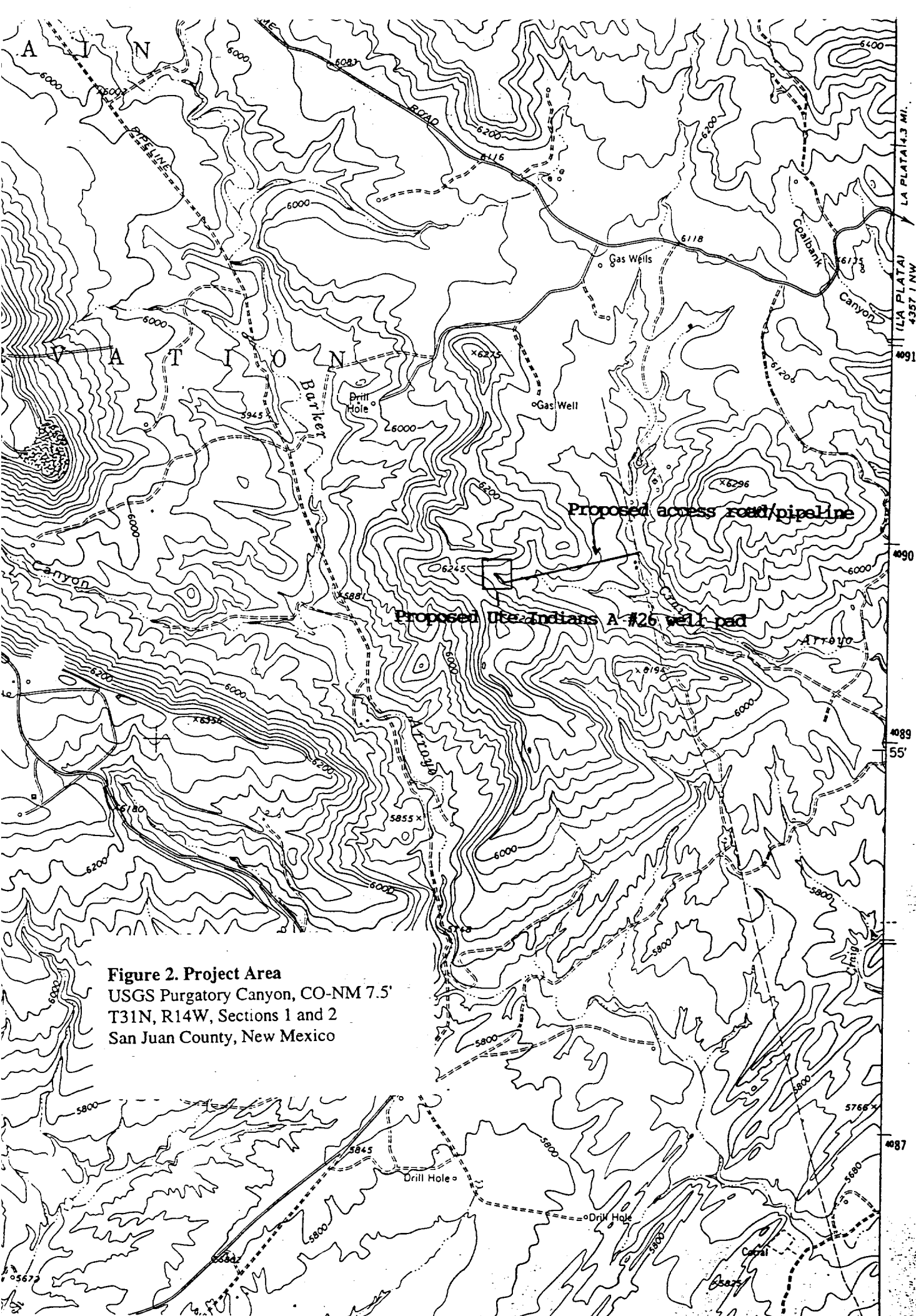


Figure 2. Project Area
 USGS Purgatory Canyon, CO-NM 7.5'
 T31N, R14W, Sections 1 and 2
 San Juan County, New Mexico