

District I
PO Box 1980, Hobbs, NM 88241-1980
District II
811 S. 1st Street, Artesia, NM 88210-2834
District III
1000 Rio Brazos Rd., Aztec, NM 87410
District IV
2040 South Pacheco, Santa Fe, NM 87505

State of New Mexico
Energy, Minerals & Natural Resources Department

OIL CONSERVATION DIVISION
2040 South Pacheco
Santa Fe, NM 87505

Form C-101
Revised October 18, 1994
Instructions on back
Submit to Appropriate District Office
State Lease - 6 Copies
Fee Lease - 5 Copies

MAR 15 1999

☐ AMENDED REPORT

APPLICATION FOR PERMIT TO DRILL, RE-ENTER, DEEPEN, PLUGBACK, OR ADD A ZONE

¹ Operator name and Address Phillips Petroleum Company 5525 Highway 64, NBU 3004 Farmington, NM 87401		² OGRID Number 017654
⁴ Property Code 009260	⁵ Property Name San Juan 32-7 Unit	³ API Number 30-0 45 29874 ⁶ Well No. 240

⁷ Surface Location									
UL or lot no. E	Section 20	Township 32N	Range 7W	Lot. Idn	Feet from the 1680'	North/South Line North	Feet from the 135'	East/West line West	County San Juan

⁸ Proposed Bottom Hole Location If Different From Surface									
UL or lot no. H	Section 19	Township 32N	Range 7W	Lot. Idn	Feet from the 1882	North/South Line North	Feet from the 335	East/West line East	County San Juan
⁹ Proposed Pool 1 Basin Fruitland Coal 71629					¹⁰ Proposed Pool 2				

¹¹ Work Type Code N	¹² Well Type Code G	¹³ Cable/Rotary R	¹⁴ Lease Type Code P	¹⁵ Ground Level Elevation 6280' unprepared GL
¹⁶ Multiple No	¹⁷ Proposed Depth 3100' TVD; 3172' TVD	¹⁸ Formation Fruitland Coal	¹⁹ Contractor 4CAT	²⁰ Spud Date 3 Qtr 1999

²¹ Proposed Casing and Cement Program					
Hole Size	Casing Size	Casing weight/foot	Setting Depth	Sacks of Cement	Estimated TOC
12-1/4"	9-5/8"	36# J/K-55	350' (TVD)	185 sx C1 B	Surface
8-3/4"	7"	20# J/K-55	2830' (TVD)	L-450 sx65/35 T-150 sx C1 B	Surface
6-1/2"	5-1/2"	15.5# J/K-55	2810' liner top to 3100' TVD	** or 3172' TMD	

²² Describe the proposed program. If this application is to DEEPEN or PLUG BACK give the data on the present productive zone and proposed new productive zone. Describe the blowout prevention program, if any. Use additional sheets if necessary

** If the coal is clefted a 5-1/2" 20# J/K liner will be run in the open hole without being cemented. If the coal is not clefted, the well will be stimulated and open completed.

See attached projected directional drill plat and worksheets prepared for Phillips by Baker Hughes Inteq.

Attached is the approved copy of the amended Administrative Order DD-194(NSBHL). Note that the Surface location is different than in Order, but the bottomhole location is the same. Per Ernie Busch since the bottomhole location is the same no additional approval is needed.

²³ I hereby certify that the information given above is true and complete to the best of my knowledge and belief.

Signature:

Printed name:

Title:

Patsy Clugston

Regulatory Assistant

OIL CONSERVATION DIVISION

Approved by:

Title:

Approval Date:

Ernie Busch
DEPUTY OIL & GAS INSPECTOR, DIST. #3

Expiration Date:

MAR 16 1999 MAR 16 2000

District I
IN Box 1980, Hobbs, NM 88241-1980
District II
811 South First, Artesia, NM 88210
District III
1000 Rio Brazos Rd., Aztec, NM 87410
District IV
2040 South Pacheco, Santa Fe, NM 87505

State of New Mexico
Energy, Minerals & Natural Resources Department

OIL CONSERVATION DIVISION
2040 South Pacheco
Santa Fe, NM 87505

Form C-102
Revised October 18, 1994
Instructions on back
Submit to Appropriate District Office
State Lease - 4 Copies
Fee Lease - 3 Copies

☐ AMENDED REPORT

WELL LOCATION AND ACREAGE DEDICATION PLAT

APN Number 30-045-29874		Pool Code 71629	Pool Name Basin Fruitland Coal
Property Code 009260	Property Name SAN JUAN 32-7		Well Number 240
OGRID No. 017654	Operator Name PHILLIPS PETROLEUM COMPANY		Elevation 6280'

10 Surface Location

UL or lot no.	Section	Township	Range	Lot Idn	Feet from the	North/South line	Feet from the	East/West line	County
E	20	32N	7W		1680'	NORTH	135'	WEST	SAN JUAN

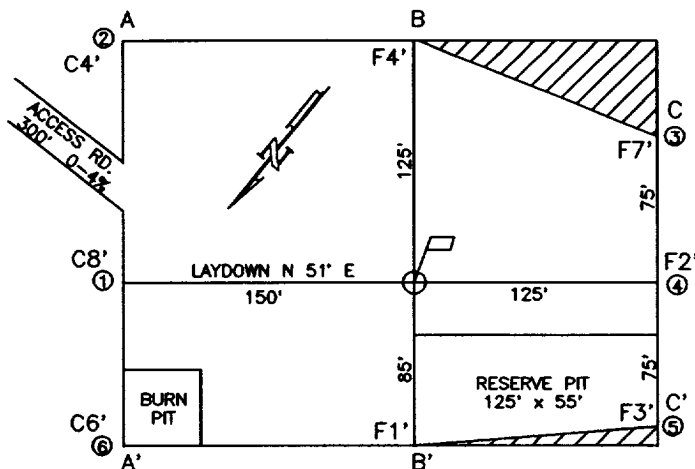
11 Bottom Hole Location If Different From Surface

UL or lot no.	Section	Township	Range	Lot Idn	Feet from the	North/South line	Feet from the	East/West line	County
H	19	32N	7W		1882	NORTH	335	EAST	SAN JUAN

12 Dedicated Acres	13 Joint or Infill	14 Consolidation Code	15 Order No.
330.37	N	U	Amended Administrative Order DD-194 (NSBHL)

NO ALLOWABLE WILL BE ASSIGNED TO THIS COMPLETION UNTIL ALL INTERESTS HAVE BEEN CONSOLIDATED OR A NON-STANDARD UNIT HAS BEEN APPROVED BY THE DIVISION

<p>Diagram showing sections 19 and 20. Dimensions: 2841.30', 2601.72', 1680', 2638.02', 1882', 135', 335', 2624.16', 3017.52', 2490.84'. Labels: Surface Location, Bottom Hole Location, Section 19, Section 20.</p>	<p>17 OPERATOR CERTIFICATION</p> <p>I hereby certify that the information contained herein is true and complete to the best of my knowledge and belief</p> <p><i>Ratsy Clugston</i> Signature Ratsy Clugston Printed Name Regulatory Assistant Title 3-11-99 Date</p>
	<p>18 SURVEYOR CERTIFICATION</p> <p>I hereby certify that the well location shown on this plat was plotted from field notes of actual surveys made by me or under my supervision, and that the same is true and correct to the best of my belief.</p> <p>02/16/99 Date of Survey Signature and Seal of Professional Surveyor: Certification Number</p>



ELEVATION A-A'

C/L

6300
6290
6280
6270
6260

B-B'

C/L

6300
6290
6280
6270
6260

C-C'

C/L

6300
6290
6280
6270
6260

COMPANY: PHILLIPS PETROLEUM COMPANY

LEASE: SAN JUAN 32-7 UNIT No.240

FOOTAGE: 1680' FNL, 135' FWL UNIT E

SEC. 20 TWN. 32-N RNG. 07-W N.M.P.M.

COUNTY, SAN JUAN STATE, N.M.

ELEVATION: 6280

LATITUDE: 36-58-05

LONGITUDE: 107-35-53



PHILLIPS PETROLEUM COMPANY
FARMINGTON, NEW MEXICO

SURVEYED: 2/16/99

REV. DATE:

APP. BY H.B.

DRAWN BY: T.G.

DATE DRAWN: 2/22/99

FILE NAME: P001202

UNITED
FIELD SERVICES INC.

P.O. BOX 3651
FARMINGTON, NM 87499
OFFICE: (505)334-0408

PHILLIPS PETROLEUM COMPANY

SAN JUAN 32-7 UNIT No.240

1680' FNL, 135' FWL

NW/4 SEC.20, T-32-N, R-07-W, N.M.P.M.

SAN JUAN COUNTY, NEW MEXICO

GROUND LEVEL ELEVATION: 6280

