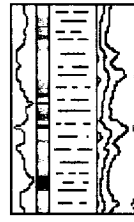


SOFTROCK GEOLOGICAL SERVICES, INC.

591 County Rd. 233 Durango, CO 81301

(970) 247-8868 fax 247-5108



Scale 1:240 (5"=100') Imperial

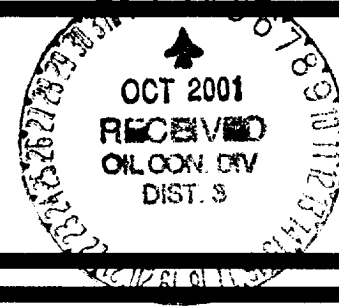
Well Name: San Juan 32-7 Unit No. 243 (Dir)
Location: Sec. 19 T32N R7W
Licence Number:
Spud Date: August 17, 2001*
Surface Coordinates: 1750' FSL
300' FWL
Bottom Hole: 739' FSL NOTE: bottom hole coordinates from survey at 3607'
Coordinates: 727' FEL later surveys maybe more accurate.
Ground Elevation (ft): 6877** K.B. Elevation (ft): 6892'
Logged Interval (ft): 3645' To: 3854' Total Depth (ft): 3854'
Formation: Fruitland Formation
Type of Drilling Fluid: Air / Mist
Printed by MUD.LOG from WellSight Systems Inc. 1-800-447-1534 www.wellsight.com

OPERATOR

Company: Phillips Petroleum Company
Address: 5525 Hwy 64
Farmington, NM 87401

GEOLOGIST

Name: Peter D. Falk & B. Bradley
Company: Softrock Geological Services, Inc.
Address: 591 CR 233
Durango, CO 81301
(970) 247-8868 247-5108 fax



Contractor:

Operator: Key Energy Services Rig #18
Drilling Supervisor: David Green

*NOTE: Surface hole/casing previously topset,
spud date refers to date drilled out of surface casing
by Rig 53.

**NOTE: Ground Elevation is from Ungraded Survey

Instruments:

FID Chromatograph
FID Total Gas Detector

Hole Info.:

Hole Size:
Surface to 250' 12-1/4"
250' to 3645' 8-3/4" (S-curve)
3380' to TD 6-1/4"

Casing Size:
Surface 9-5/8" set at 250'
Intermediate 7" set at 3640'

ROCK TYPES

Anhy
Bent
Brec
Cht
Clyst
Coal
Congl

Dol
Gyp
Igne
Lmst
Meta
Mrst
Salt

Shale
Shcol
Shgy
Sltst
Ss
Till
Blank

Clyst
Fracture
Shale
Sltst
Carb sh
cement

ACCESSORIES

MINERAL
Anhy
Arggrn
Arg
Bent
Bit
Brecfrag
Calc
Chtdk
Chtlt
Dol
Feldspar
Ferrpel
Ferr
Glau
Gyp
Hvymin
Kaol

Marl
Minxl
Nodule
Phos
Pyr
Salt
Sandy
Silt
Sil
Sulphur
Tuff
FOSSIL
Algae
Amph
Belm
Bioclst
Brach
Bryozoa
Cephal

Coral
Crin
Echin
Fish
Foram
Fossil
Gastro
Oolite
Ostra
Pelec
Pellet
Pisolite
Plant
Strom
STRINGER
Anhy
Arg
Bent
Coal

Dol
Gyp
Ls
Mrst
Sltstrg
Ssstrg
TEXTURE
Boundst
Chalky
Cryxln
Earthy
Finexln
Grainst
Lithogr
Microxln
Mudst
Packst
Wackest

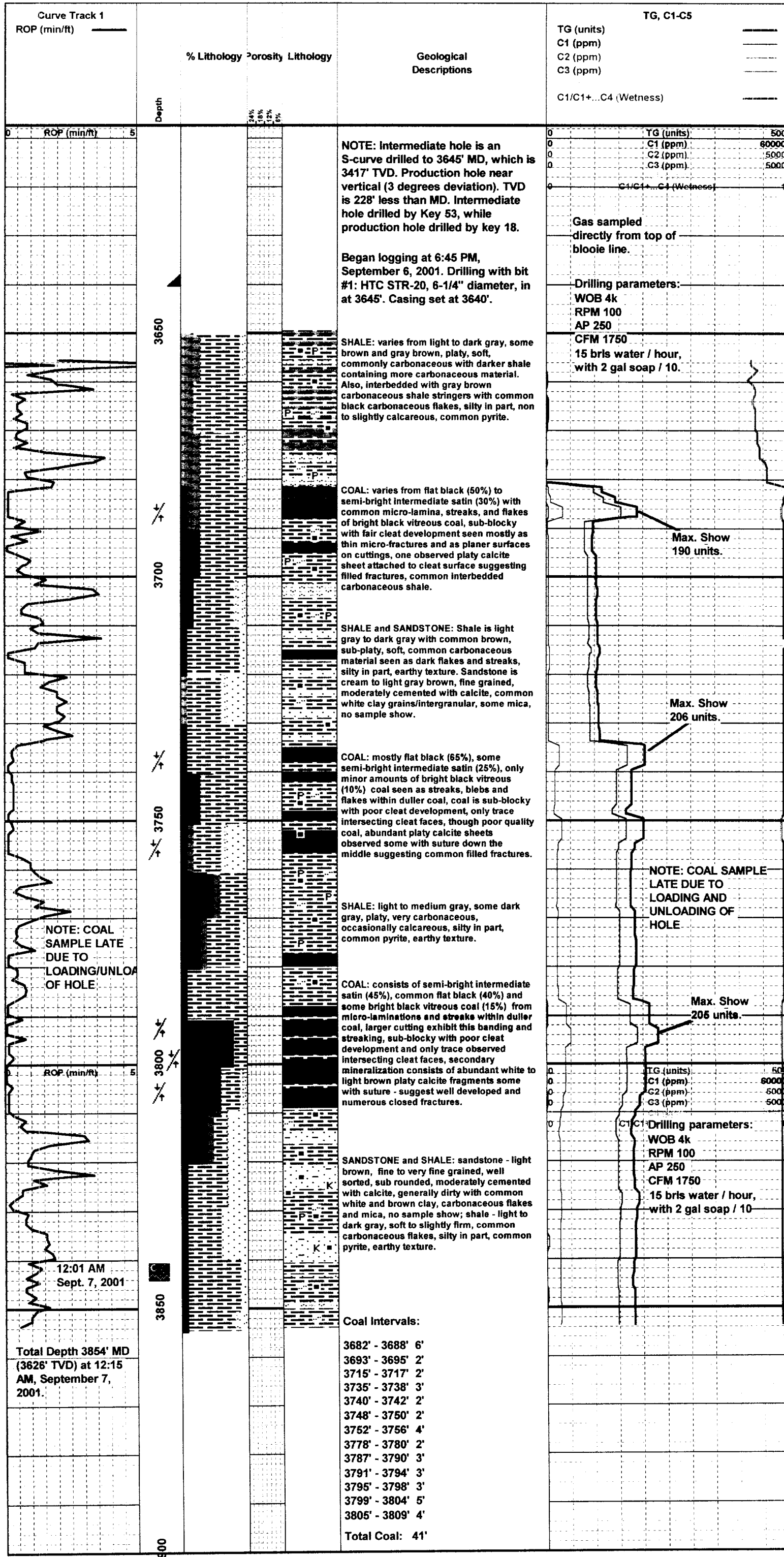
OTHER SYMBOLS

POROSITY TYPE
Earthy
Fenest
Fracture
Inter
Moldic
Organic
Pinpoint
Vuggy
SORTING

Well
Moderate
Poor
ROUNDING
Rounded
Subrnd
Subang
Angular
OIL SHOWS
Even

Spotted
Ques
Dead
INTERVALS
None
Core
Dst
Sliding
EVENTS
Rft

Sidewall
Bit trip
Csg shoe
Fracture
Gas show
Midnight
Survey
Hops
Pitot



SOFTROCK GEOLOGICAL SERVICES, INC.



591 County Rd. 233 Durango, CO 81301

(970) 247-8868 fax 247-5108



Scale 1:240 (5"=100') Imperial

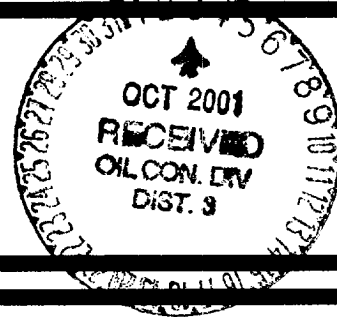
Well Name: San Juan 32-7 Unit No. 243 (Dir)
Location: Sec. 19 T32N R7W
Licence Number:
Spud Date: August 17, 2001*
Surface Coordinates: 1750' FSL
300' FWL
Bottom Hole: 739' FSL NOTE: bottom hole coordinates from survey at 3607'
Coordinates: 727' FEL later surveys maybe more accurate.
Ground Elevation (ft): 6877** K.B. Elevation (ft): 6892'
Logged Interval (ft): 3645' To: 3854' Total Depth (ft): 3854'
Formation: Fruitland Formation
Type of Drilling Fluid: Air / Mist
Printed by MUD.LOG from WellSight Systems Inc. 1-800-447-1534 www.wellsight.com

OPERATOR

Company: Phillips Petroleum Company
Address: 5525 Hwy 64
Farmington, NM 87401

GEOLOGIST

Name: Peter D. Falk & B. Bradley
Company: Softrock Geological Services, Inc.
Address: 591 CR 233
Durango, CO 81301
(970) 247-8868 247-5108 fax



Contractor:

Operator: Key Energy Services Rig #18
Drilling Supervisor: David Green

*NOTE: Surface hole/casing previously topset,
spud date refers to date drilled out of surface casing
by Rig 53.

**NOTE: Ground Elevation is from Ungraded Survey

Instruments:

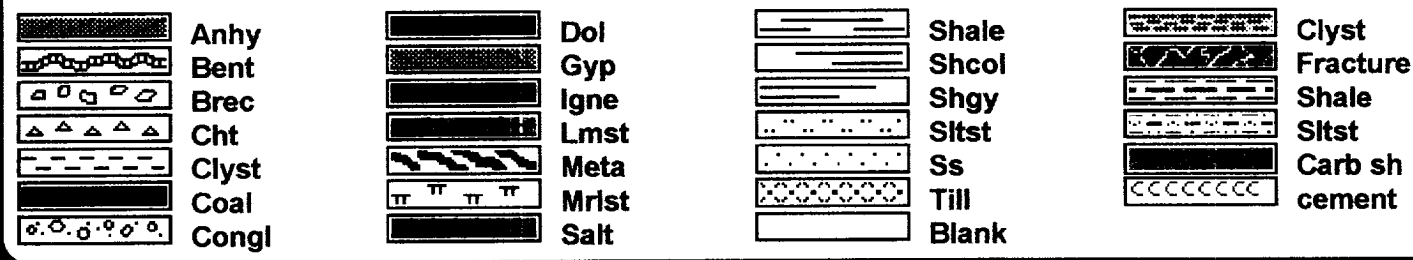
FID Chromatograph
FID Total Gas Detector

Hole Info.:

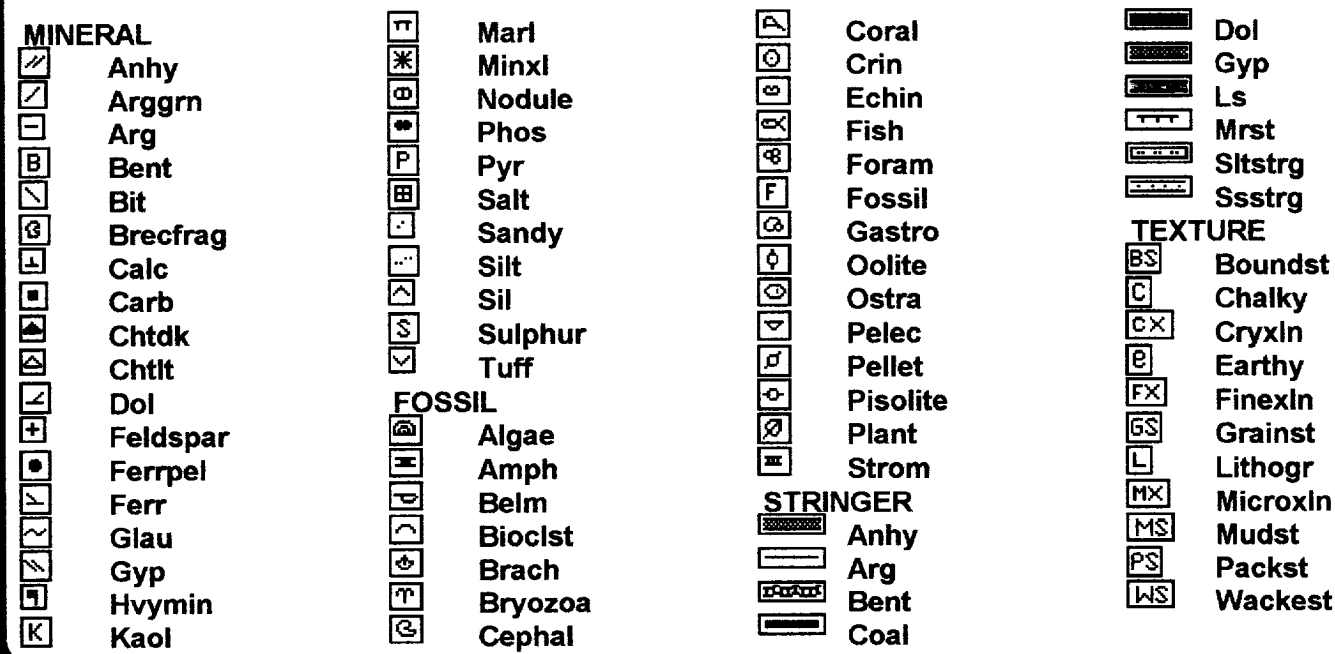
Hole Size:
Surface to 250' 12-1/4"
250' to 3645' 8-3/4" (S-curve)
3380' to TD 6-1/4"

Casing Size:
Surface 9-5/8" set at 250'
Intermediate 7" set at 3640'

ROCK TYPES



ACCESSORIES



OTHER SYMBOLS

