

UNITED STATES
DEPARTMENT OF THE INTERIOR
BUREAU OF LAND MANAGEMENT

APPLICATION FOR PERMIT TO DRILL, DEEPEN, OR PLUG BACK

1a. Type of Work
DRILL

5. Lease Number
SF-077648
Unit Reporting Number

1b. Type of Well
GAS

6. If Indian, All. or Tribe

2. Operator
BURLINGTON RESOURCES Oil & Gas Company

7. Unit Agreement Name

3. Address & Phone No. of Operator
PO Box 4289, Farmington,
(505) 326-9700

8. Farm or Lease Name
Decker A

9. Well Number
1B

4. Location of Well
1900' FNL, 660' FWL
Latitude 36° 55.8, Longitude 108° 05.4

10. Field, Pool, Wildcat
Blanco Mesaverde

11. Sec., Twn, Rge, Mer. (NMPM)
E Sec. 3, T-31-N, R-12-W
API # 30-045-30033

14. Distance in Miles from Nearest Town
6 miles from Aztec

12. County
San Juan

13. State
NM

15. Distance from Proposed Location to Nearest Property or Lease Line
660'

16. Acres in Lease

17. Acres Assigned to Well
323 N/2
322.96

18. Distance from Proposed Location to Nearest Well, Drlg, Compl, or Applied for on this Lease
1300'

19. Proposed Depth
5279'

20. Rotary or Cable Tools
Rotary

21. Elevations (DF, FT, GR, Etc.)
6089'

22. Approx. Date Work will Start

23. Proposed Casing and Cementing Program
See Operations Plan attached

24. Authorized by: *Regan Cole*
Regulatory/Compliance Administrator

DRILLING OPERATIONS AUTHORIZED ARE
SUBJECT TO COMPLIANCE WITH ATTACHED
"GENERAL REQUIREMENTS"

10-14-99
Date

PERMIT NO. _____ APPROVAL DATE _____

APPROVED BY _____ TITLE _____ DATE _____

Archaeological Report to be submitted

Threatened and Endangered Species Report to be submitted

NOTE: This format is issued in lieu of U.S. BLM Form 3160-3

Title 18 U.S.C. Section 1001, makes it a crime for any person knowingly and willfully to make to any department or agency of the United States any false, fictitious or fraudulent statements or presentations as to any matter within its jurisdiction.

NMOCD

OPERATIONS PLAN

Well Name: Decker A #1B
Surface Location: 1900' FNL, 660' FWL, Section 3, T-31-N, R-12-W
San Juan County, New Mexico
Latitude 36° 55.8, Longitude 108° 05.4

Formation: Blanco Mesa Verde
Elevation: 6089' GL

<u>Formation Tops:</u>	<u>Top</u>	<u>Bottom</u>	<u>Contents</u>
Surface	San Jose	886'	aquifer
Ojo Alamo	886'	942'	aquifer
Kirtland	942'	1858'	gas
Fruitland	1858'	2462'	gas
Pictured Cliffs	2462'	2683'	gas
Lewis	2683'	3237'	gas
Intermediate TD	2783'		
Mesa Verde	3237'	3666'	gas
Chacra	3666'	4159'	gas
Massive Cliff House	4159'	4379'	gas
Menefee	4379'	4879'	gas
Point Lookout	4879'		gas
Total Depth	5279'		

Logging Program:

Cased hole logging - Gamma Ray, Cement bond from surface to TD
Mud Logs/Coring/DST - none

Mud Program:

<u>Interval- MD</u>	<u>Type</u>	<u>Weight</u>	<u>Vis.</u>	<u>Fluid Loss</u>
0- 200'	Spud	8.4-9.0	40-50	no control
200- 2783'	LSND	8.4-9.0	30-60	no control
2783- 5279'	Air/Mist	n/a	n/a	n/a

Pit levels will be visually monitored to detect gain or loss of fluid control.

Casing Program (as listed, the equivalent, or better):

<u>Hole Size</u>	<u>Measured Depth</u>	<u>Csg Size</u>	<u>Weight</u>	<u>Grade</u>
12 1/4"	0' - 200'	9 5/8"	32.3#	H-40
8 3/4"	0' - 2783'	7"	20.0#	J-55
6 1/4"	2683' - 5279'	4 1/2"	10.5#	J-55

Tubing Program: 0' - 5279' 2 3/8" 4.7# J-55

BOP Specifications, Wellhead and Tests:

Surface to Intermediate TD -

11" 2000 psi minimum double gate BOP stack (Reference Figure #1).
After nipple-up prior to drilling out surface casing, rams and casing will be tested to 600 psi for 30 minutes.

District I
PO Box 1980, Hobbs, NM 88241-1980

District II
PO Drawer DD, Artesia, NM 88211-0719

District III
1000 Rio Brazos Rd., Aztec, NM 87410

District IV
PO Box 2088, Santa Fe, NM 87504-2088

State of New Mexico
Energy, Minerals & Natural Resources Department

OIL CONSERVATION DIVISION

PO Box 2088
Santa Fe, NM 87504-2088

Form C-102
Revised February 21, 1994
Instructions on back
Submit to Appropriate District Office
State Lease - 4 Copies
Fee Lease - 3 Copies

NOV 12 PM 12:42

AMENDED REPORT
070 FARMINGTON, NM

WELL LOCATION AND ACREAGE DEDICATION PLAT

API Number 30-045 30033		Pool Code 72319	Pool Name Blanco Mesaverde
Property Code 18513	Property Name DECKER A		Well Number 18
OGRID No. 14538	Operator Name BURLINGTON RESOURCES OIL & GAS COMPANY		Elevation 6089'

¹⁰ Surface Location

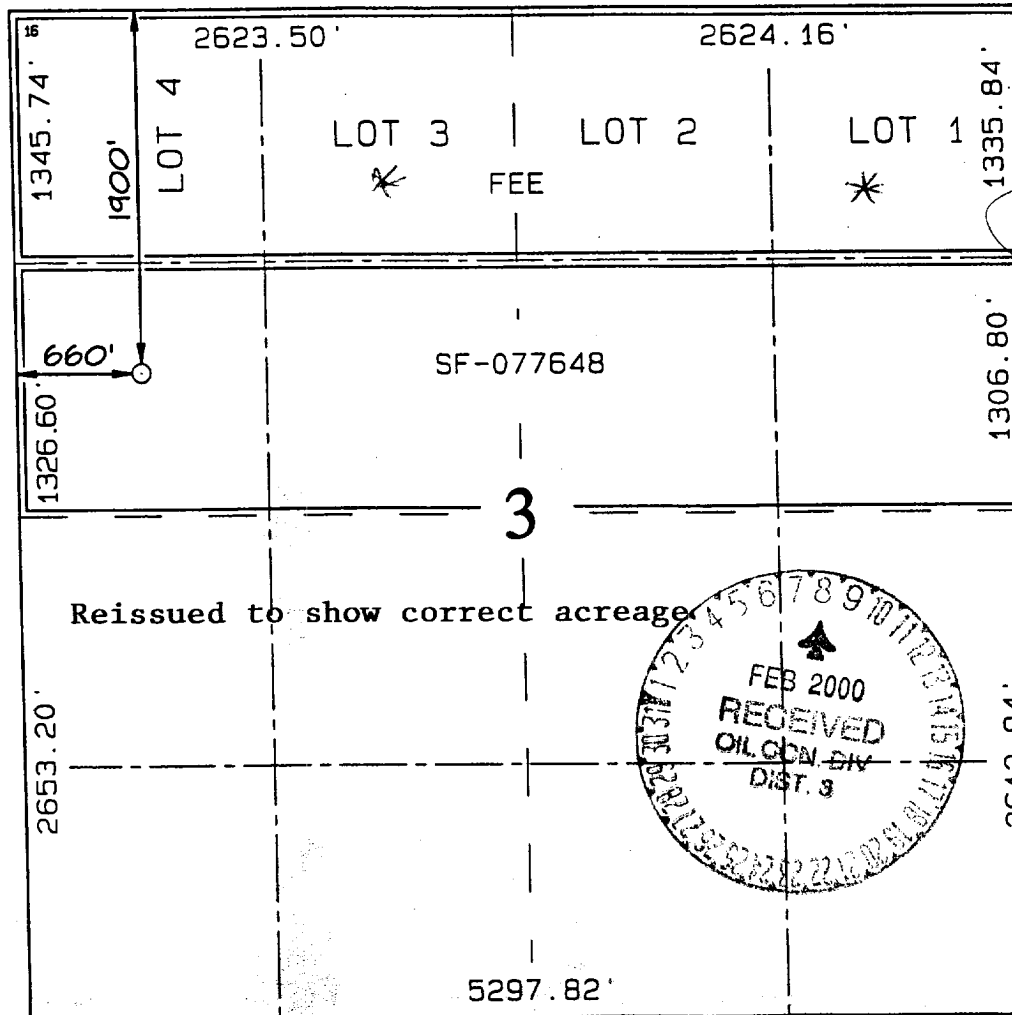
UL or lot no.	Section	Township	Range	Lot Idn	Feet from the	North/South line	Feet from the	East/West line	County
E	3	31N	12W		1900	NORTH	660	WEST	SAN JUAN

¹¹ Bottom Hole Location If Different From Surface

UL or lot no.	Section	Township	Range	Lot Idn	Feet from the	North/South line	Feet from the	East/West line	County

¹² Dedicated Acres N/322.96	¹³ Joint or Infill	¹⁴ Consolidation Code	¹⁵ Order No.
---	-------------------------------	----------------------------------	-------------------------

NO ALLOWABLE WILL BE ASSIGNED TO THIS COMPLETION UNTIL ALL INTERESTS HAVE BEEN CONSOLIDATED
OR A NON-STANDARD UNIT HAS BEEN APPROVED BY THE DIVISION



¹⁷ OPERATOR CERTIFICATION
I hereby certify that the information contained herein is true and complete to the best of my knowledge and belief

Peggy Cole
Signature
Peggy Cole
Printed Name
Regulatory Administrator
Title
11-18-99
Date

¹⁸ SURVEYOR CERTIFICATION
I hereby certify that the well location shown on this plat was plotted from field notes of actual surveys made by or under my supervision, and that the same is true and correct to the best of my belief.

SEPTEMBER 8, 1999
Date of Survey
NEALE C. EDWARDS
Signature and Seal
Certificate Number 6857

BURLINGTON RESOURCES OIL & GAS COMPANY DECKER A #1B

1900' FNL & 660' FWL, SECTION 3, T31N, R12W, N.M.P.M.
SAN JUAN COUNTY, NEW MEXICO

APD MAP #1

2000' NEW BLM CONSTRUCTION
400' NE/SW SECTION 3, T31N, R12W
1300' NWSW SECTION 3, T31N, R12W
300' SWNW SECTION 3, T31N, R12W.

