

UNITED STATES
DEPARTMENT OF THE INTERIOR
BUREAU OF LAND MANAGEMENT

APPLICATION FOR PERMIT TO DRILL, DEEPEN, OR PLUG BACK

1a. Type of Work DRILL	5. Lease Number SF-078039A Unit Reporting Number
1b. Type of Well GAS	6. If Indian, All. or Tribe
2. Operator BURLINGTON RESOURCES Oil & Gas Company	7. Unit Agreement Name
3. Address & Phone No. of Operator PO Box 4289, Farmington, NM 87499 (505) 326-9700	8. Farm or Lease Name Primo Mudge 9. Well Number 1B
4. Location of Well 1525' FSL, 1050' FWL Latitude 36° 58.1, Longitude 109° 56.8	10. Field, Pool, Wildcat Blanco Mesaverde 11. Sec., Twn, Rge, Mer. (NMPM) L Sec. 24, T-32-N, R-11-W API # 30-045-30119
14. Distance in Miles from Nearest Town 15 miles from Aztec	12. County San Juan 13. State NM
15. Distance from Proposed Location to Nearest Property or Lease Line 1050'	17. Acres Assigned to Well 320 S/2
16. Acres in Lease	
18. Distance from Proposed Location to Nearest Well, Drlg, Compl, or Applied for on this Lease 1000'	
19. Proposed Depth 5834' <i>This action is subject to technical and procedural review pursuant to 43 CFR 3165.3 and appeal pursuant to 43 CFR 3165.4.</i>	20. Rotary or Cable Tools Rotary
21. Elevations (DF, FT, GR, Etc.) 6407' GL	22. Approx. Date Work will Start DRILLING OPERATIONS AUTHORIZED ARE SUBJECT TO COMPLIANCE WITH ATTACHED "GENERAL REQUIREMENTS"
23. Proposed Casing and Cementing Program See Operations Plan attached	
24. Authorized by: <u><i>Perry Cole</i></u> Regulatory/Compliance Administrator	<u>1-18-00</u> Date

PERMIT NO. chsc

APPROVAL DATE _____

APPROVED BY /s/ Charlie Beecham

TITLE Team Lead, Petroleum Management

DATE MAR 13 2000

Archaeological Report to be submitted

Threatened and Endangered Species Report to be submitted

NOTE: This format is issued in lieu of U.S. BLM Form 3160-3

Title 18 U.S.C. Section 1001, makes it a crime for any person knowingly and willfully to make to any department or agency of the United States any false, fictitious or fraudulent statements or presentations as to any matter within its jurisdiction.

NMOCD

DISTRICT I
P.O. Box 1980, Hobbs, N.M. 88241-1980

State of New Mexico
Energy, Minerals & Natural Resources Department

Form C-102
Revised February 21, 1994

DISTRICT II
P.O. Drawer DD, Artesia, N.M. 88211-0719

Instructions on back
Submit to Appropriate District Office
State Lease - 4 Copies
Fee Lease - 3 Copies

DISTRICT III
1000 Rio Brazos Rd., Aztec, N.M. 87410

OIL CONSERVATION DIVISION

P.O. Box 2088
Santa Fe, NM 87504-2088

DISTRICT IV
PO Box 2088, Santa Fe, NM 87504-2088

☐ AMENDED REPORT

WELL LOCATION AND ACREAGE DEDICATION PLAT

¹ API Number 30-045-30119	² Pool Code 72319	³ Pool Name Blanco Mesaverde
⁴ Property Code 18602	⁵ Property Name PRIMO MUDGE	⁶ Well Number 1B
⁷ OGRID No. 14538	⁸ Operator Name BURLINGTON RESOURCES OIL & GAS COMPANY	⁹ Elevation 6407'

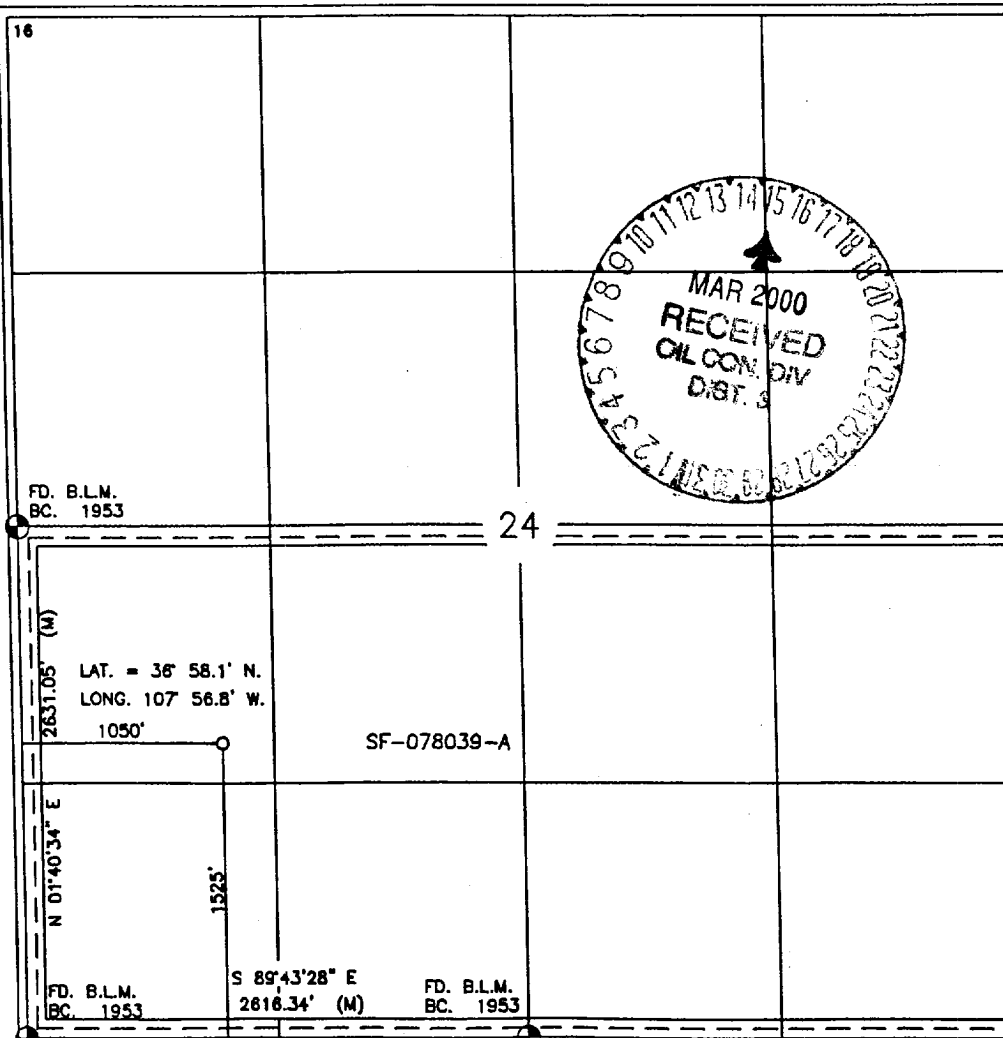
¹⁰ Surface Location

UL or lot no.	Section	Township	Range	Lot Idn	Feet from the	North/South line	Feet from the	East/West line	County
L	24	32-N	11-W		1525	SOUTH	1050	WEST	SAN JUAN

¹¹ Bottom Hole Location If Different From Surface

UL or lot no.	Section	Township	Range	Lot Idn	Feet from the	North/South line	Feet from the	East/West line	County
¹² Dedicated Acres S/320		¹³ Joint or Infill		¹⁴ Consolidation Code		¹⁵ Order No.			

NO ALLOWABLE WILL BE ASSIGNED TO THIS COMPLETION UNTIL ALL INTERESTS HAVE BEEN CONSOLIDATED
OR A NON-STANDARD UNIT HAS BEEN APPROVED BY THE DIVISION



17 OPERATOR CERTIFICATION

I hereby certify that the information contained herein is true and complete to the best of my knowledge and belief

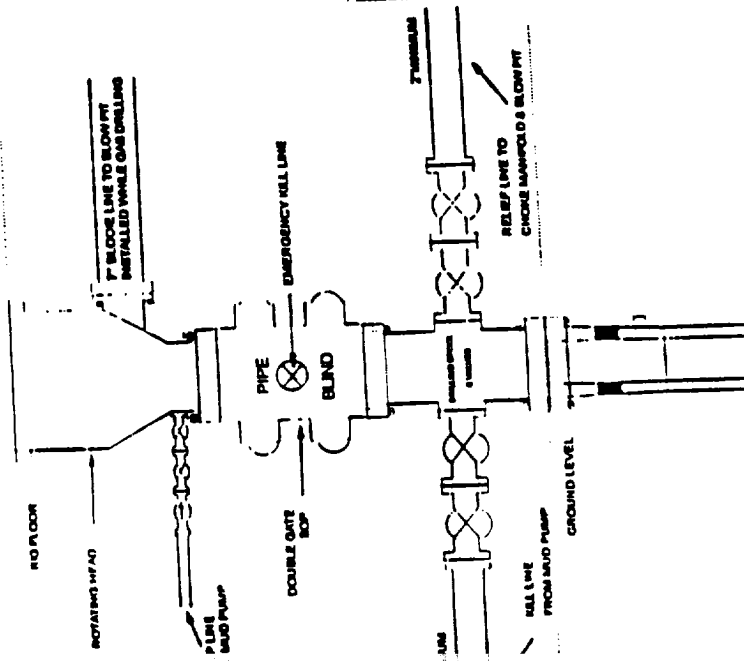
Peggy Cole
Signature
Peggy Cole
Printed Name
Regulatory Administrator
Title
1-18-00
Date

18 SURVEYOR CERTIFICATION

I hereby certify that the well location shown on this plat was plotted from field notes of actual surveys made by me or under my supervision, and that the same is true and correct to the best of my belief

11-3-99
Date of Survey
Signature and Seal of Professional Surveyor:
8894
Certificate Number

BOP Configuration 2M psi System

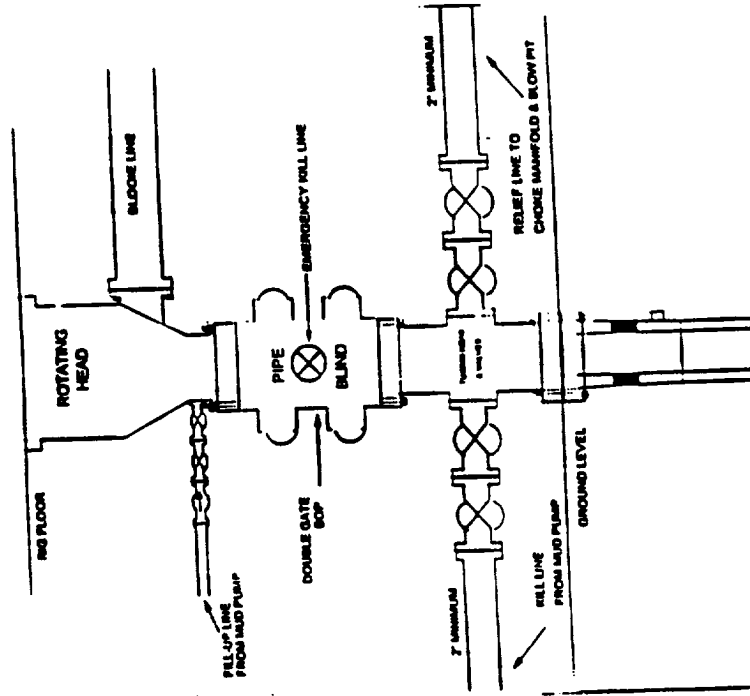


* Bore, 2000psi minimum working pressure double gate BOP to be equipped with blind and pipe rams. A Schaeffer Type 50 or equivalent rotating head to be installed on the top of the BOP. All equipment is 2000psi working pressure or better.

FIGURE #1

BURLINGTON RESOURCES

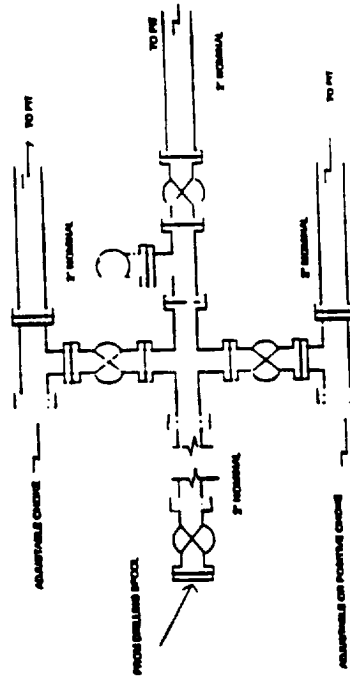
BOP Configuration 2M psi System



Minimum BOP Installation for Completion operations. 7 1/16\" Bore (6\" Nominal). 2,000 psi minimum working pressure double gate BOP to be equipped with blind and pipe rams

FIGURE #2

Choke Manifold Configuration 2M System



Minimum choke manifold installation from surface to Total Depth. 2\" minimum, 2000psi working pressure equipment with two chokes

Figure #3

PRIMO MUDGE No. 1B

SAN JUAN COUNTY, NEW MEXICO

1525' FSL 1050' FWL

APD MAP #1

900' NEW CONSTRUCTION
400' SE/SW SECTION 24, T32N, R11W
300' SW/SW SECTION 24, T32N, R11W
200' NW/SW SECTION 24, T32N, R11W

