

UNITED STATES
DEPARTMENT OF THE INTERIOR
BUREAU OF LAND MANAGEMENT

APPLICATION FOR PERMIT TO DRILL, DEEPEN, OR PLUG BACK

1a. Type of Work DRILL	5. Lease Number NM-04207 Unit Reporting Number
1b. Type of Well GAS	6. If Indian, All. or Tribe
2. Operator BURLINGTON RESOURCES Oil & Gas Company	7. Unit Agreement Name Allison Unit
3. Address & Phone No. of Operator PO Box 4289, Farmington, NM 87401 (505) 326-9700	8. Farm or Lease Name Allison Unit Com Well Number #150
4. Location of Well 1150' FSI, 1605' FEL Latitude 36° 59.5, Longitude 107° 08.7	9. Field, Pool, Wildcat Basin Fruitland Coal 10. Sec., Twn, Rge, Mer. (NMPM) 0 Sec. 8, T-32-N, R-6-W API # 30-045-30154
14. Distance in Miles from Nearest Town 3 mi from Allison	12. County San Juan / 13. State NM
15. Distance from Proposed Location to Nearest Property or Lease Line 1150'	17. Acres Assigned to Well 277.51 E/2 ✓
16. Acres in Lease	18. Distance from Proposed Location to Nearest Well, Drig, Compl, or Applied for on this Lease 75'
19. Proposed Depth 2773' ✓	20. Rotary or Cable Tools Rotary
21. Elevations (DF, FT, GR, Etc.) 6178' GL	22. Approx. Date Work will Start
23. Proposed Casing and Cementing Program See Operations Plan attached	
24. Authorized by: <u><i>Donna Cal</i></u> Regulatory/Compliance Administrator	Date <u>1-25-00</u>

PERMIT NO. _____

APPROVAL DATE _____

APPROVED BY /s/ Charlie Beecham

TITLE _____

DATE APR 21 2000

Archaeological Report to be submitted

Threatened and Endangered Species Report to be submitted

NOTE: This format is issued in lieu of U.S. BLM Form 3160-3

Title 18 U.S.C. Section 1001, makes it a crime for any person knowingly and willfully to make to any department or agency of the United States any false, fictitious or fraudulent statements or presentations as to any matter within its jurisdiction.

Handwritten: Filed C-104 for NSL
MWD

District I
PO Box 1980, Hobbs, NM 88241-1980

District II
PO Drawer 00, Artesia, NM 88211-0719

District III
1000 Rio Brazos Rd., Aztec, NM 87410

District IV
PO Box 2088, Santa Fe, NM 87504-2088

State of New Mexico
Energy, Minerals & Natural Resources Department

OIL CONSERVATION DIVISION
PO Box 2088
Santa Fe, NM 87504-2088

Form C-1
Revised February 21, 1990
Instructions on back
Submit to Appropriate District Office
State Lease - 4 Copies
Fee Lease - 3 Copies

☐ AMENDED REPORT

WELL LOCATION AND ACREAGE DEDICATION PLAT

*API Number 30-045-30154		*Pool Code 71629	*Pool Name Basin Fruitland Coal
*Property Code 6785	*Property Name ALLISON UNIT COM		*Well Number 150
*OGRID No. 14538	*Operator Name BURLINGTON RESOURCES OIL & GAS COMPANY		*Elevation 6178'

10 Surface Location

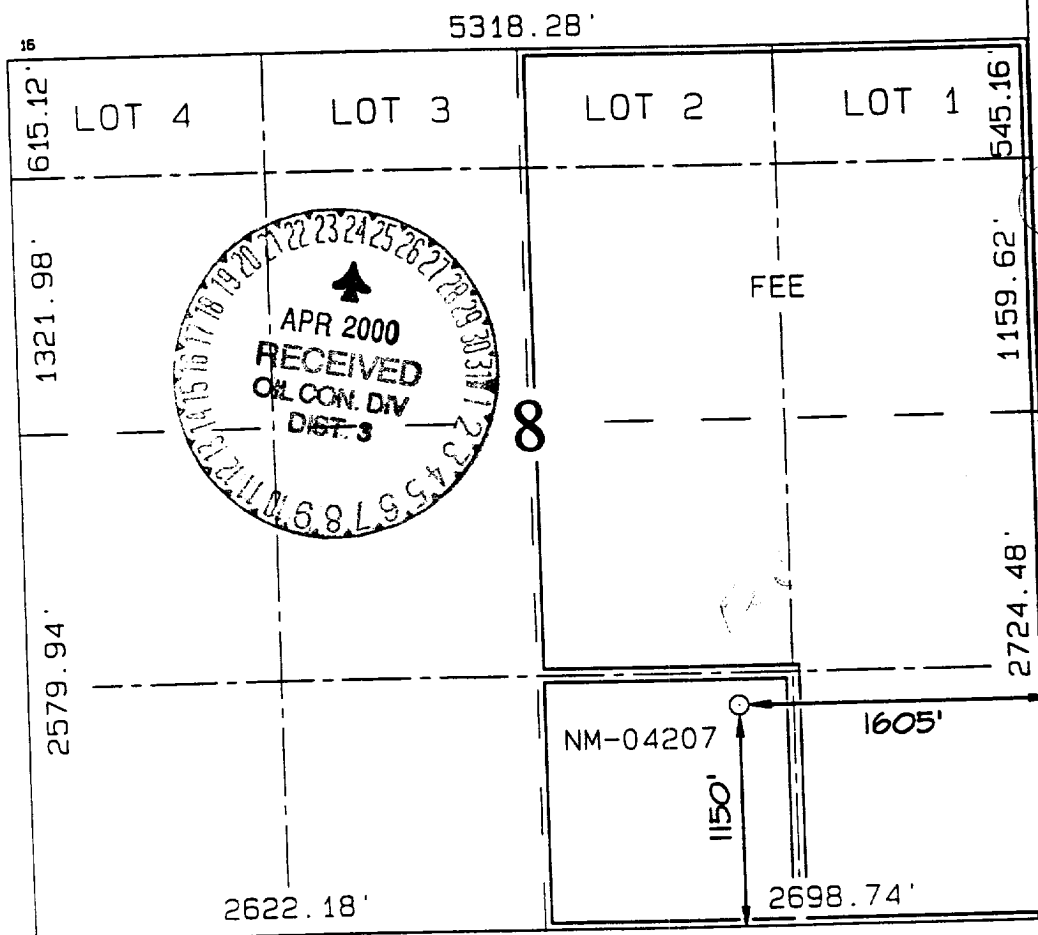
UL or lot no.	Section	Township	Range	Lot Idn	Feet from the	North/South line	Feet from the	East/West line	County
0	8	32N	6W		1150	SOUTH	1605	EAST	SAN JUA

11 Bottom Hole Location If Different From Surface

UL or lot no.	Section	Township	Range	Lot Idn	Feet from the	North/South line	Feet from the	East/West line	County

*Dedicated Acres E/277.51	*Joint or Infill	*Consolidation Code	*Order No.
------------------------------	------------------	---------------------	------------

NO ALLOWABLE WILL BE ASSIGNED TO THIS COMPLETION UNTIL ALL INTERESTS HAVE BEEN CONSOLIDATED OR A NON-STANDARD UNIT HAS BEEN APPROVED BY THE DIVISION



17 OPERATOR CERTIFICATION

I hereby certify that the information contained herein is true and complete to the best of my knowledge and belief.

Signature
Peggy Cole

Printed Name
Regulatory Administrator
Title

Date
1-18-00

18 SURVEYOR CERTIFICATION

I hereby certify that the well location shown on this plat was plotted from field notes of actual surveys made by me or under my supervision, and that the same is true and correct to the best of my belief.

NOVEMBER 26, 1999

Date of Survey
Signature and Seal of Professional Surveyor

NEALE C. EDWARDS
NEW MEXICO
6857
Certificate Number 685

OPERATIONS PLAN

Well Name: Allison Unit Com #150
Location: 1150' FSL, 1605' FEL Section 8, T-32-N, R-6-W
Latitude 36° 59.5, Longitude 107° 28.7
San Juan County, NM
Formation: Basin Fruitland Coal
Elevation: 6178' GL

Formation:	Top	Bottom	Contents
Surface	San Jose	1873'	
Ojo Alamo	1873'	2003'	aquifer
Kirtland	2003'	2496'	
Fruitland	2496'	2647'	gas
Fruitland Coal	2647'	2771'	gas
Total Depth	2773'		

Logging Program: GR, DEN, from TD to intermediate TD.

Coring Program: none

Mud Program:

<u>Interval</u>	<u>Type</u>	<u>Weight</u>	<u>Vis.</u>	<u>Fluid Loss</u>
0- 120'	Spud	8.4-9.0	40-50	no control
120-2596'	Non-dispersed	8.4-9.0	30-60	no control
2596-2773'	Air			

Casing Program (as listed, the equivalent, or better):

<u>Hole Size</u>	<u>Depth Interval</u>	<u>Csq. Size</u>	<u>Wt.</u>	<u>Grade</u>
12 1/4"	0' - 120'	9 5/8"	32.3#	H-40
8 3/4"	0' - 2596'	7"	20.0#	K-55
6 1/4"	2496' - 2773'	5 1/2"	15.5#	K-55

Tubing Program:

0' - 2773'	2 3/8"	4.7#	J-55
------------	--------	------	------

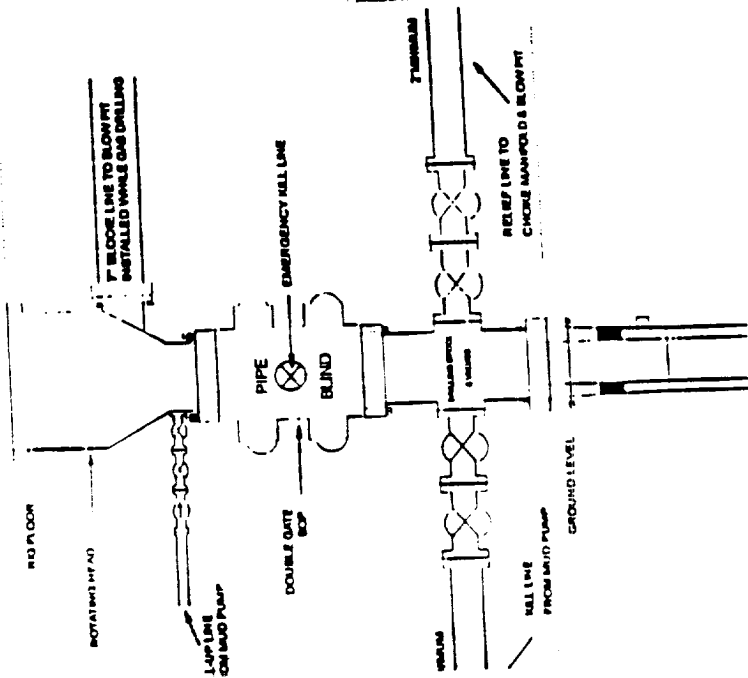
Float Equipment: 9 5/8" surface casing - saw tooth guide shoe. Centralizers will be run in accordance with Onshore Order #2.

7" intermediate casing - guide shoe and self-fill float collar.- Three centralizers run every fourth joint above shoe. Two turbolizing type centralizers - one below and one into the base of the Ojo Alamo @ 2003'. Standard centralizers thereafter every fourth joint up to the base of the surface pipe.

5 1/2" production casing - Pre-drilled liner run to the 7" casing with an overlap. Liner hanger is a slip grip type.

Wellhead Equipment: 9 5/8" x 7" x 2 3/8" x 11" 3000 psi xmas tree assembly.

BOP Configuration 2M psi System

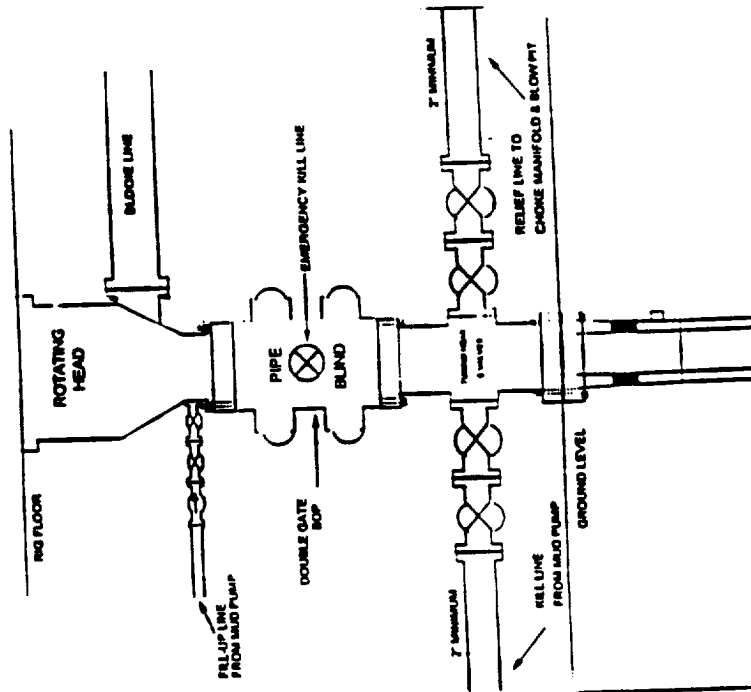


1" Bore, 2000psi minimum working pressure double gate BOP to be equipped with blind and pipe rams. A Schaffner Type 50 or equivalent rotating head to be installed on the top of the BOP. All equipment is 2000psi working pressure or greater.

FIGURE #1

BURLINGTON RESOURCES

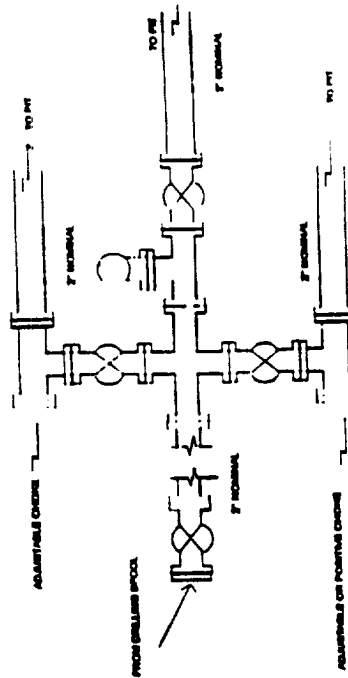
BOP Configuration 2M psi System



Minimum BOP Installation for Completion operations. 7 1/16" Bore (6" Nominal). 2,000 psi minimum working pressure double gate BOP to be equipped with blind and pipe rams.

FIGURE #2

Choke Manifold Configuration 2M System



Minimum choke manifold installation from surface to Total Depth. 2" minimum, 2000psi working pressure equipment with two chokes.

Figure #3

BURLINGTON RESOURCES OIL & GAS COMPANY ALLISON UNIT COM #150

1150' FSL & 1605' FEL, SECTION 8, T32N, R6W, N.M.P.M.

SAN JUAN COUNTY, NEW MEXICO

APD MAP #1

NO NEW CONSTRUCTION
SW/SE SECTION 8, T32N, R6W

