

UNITED STATES
DEPARTMENT OF THE INTERIOR
BUREAU OF LAND MANAGEMENT

APPLICATION FOR PERMIT TO DRILL, DEEPEN, OR PLUG BACK

1a. Type of Work
DRILL

1b. Type of Well
GAS

2. Operator
BURLINGTON RESOURCES Oil & Gas Company

3. Address & Phone No. of Operator
PO Box 4289, Farmington, NM 87499
(505) 326-9700

4. Location of Well
1650' FNL, 790' FEL
Latitude 36° 55.8, Longitude 108° 01.4

5. Lease Number
SF-078115
Unit Reporting Number

6. If Indian, All. or Tribe

7. Unit Agreement Name

8. Farm or Lease Name
Grenier

9. Well Number
1B

10. Field, Pool, Wildcat
Blanco MV/Basin DK

11. Sec., Twn, Rge, Mer. (NMPM)
H Sec. 6, T-31-N, R-11-W
API # 30-045-30240

12. County
San Juan

13. State
NM

14. Distance in Miles from Nearest Town
12 miles from Aztec

15. Distance from Proposed Location to Nearest Property or Lease Line
790'

16. Acres in Lease

17. Acres Assigned to Well
320.69 E/2

18. Distance from Proposed Location to Nearest Well, Drlg, Compl, or Applied for on this Lease
750'

19. Proposed Depth
7779' This action is subject to technical and procedural review pursuant to 43 CFR 3165.3 and appeal pursuant to 43 CFR 3165.4.

20. Rotary or Cable Tools
Rotary

21. Elevations (DF, FT, GR, Etc.)
6504' GR

22. Approx. Date Work will Start

23. Proposed Casing and Cementing Program
See Operations Plan attached

24. Authorized by: Susan Cole
Regulatory/Compliance Administrator

DRILLING OPERATIONS AUTHORIZED ARE
SUBJECT TO COMPLIANCE WITH ATTACHED
"GENERAL REQUIREMENTS"

1-4-00
Date

PERMIT NO.

APPROVAL DATE

APPROVED BY

/s/ Charlie Beecham

TITLE

DATE MAY 12 2000

Archaeological Report to be submitted

Threatened and Endangered Species Report to be submitted

NOTE: This format is issued in lieu of U.S. BLM Form 3160-3

Title 18 U.S.C. Section 1001, makes it a crime for any person knowingly and willfully to make to any department or agency of the United States any false, fictitious or fraudulent statements or presentations as to any matter within its jurisdiction.

NMOCD

District I
PO Box 1980, Hobbs, NM 88241-1980

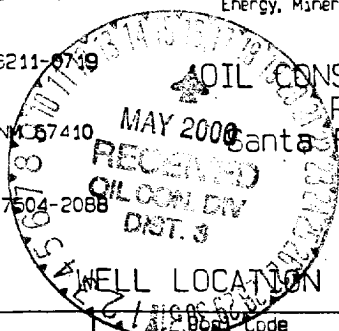
District II
PO Drawer DD, Artesia, NM 88211-0749

District III
1000 Rio Brazos Rd., Aztec, NM 87410

District IV
PO Box 2088, Santa Fe, NM 87504-2088

State of New Mexico
Energy, Minerals & Natural Resources Department

Form C-102
Revised February 21, 1994
Instructions on back
Submit to Appropriate District Office
State Lease - 4 Copies
Fee Lease - 3 Copies



☐ AMENDED REPORT

WELL LOCATION AND ACREAGE DEDICATION PLAT

API Number 30-045 30240		Well Code 72319/71599	Pool Name Blanco Mesaverde/Basin Dakota
Property Code 18530	Property Name GRENIER		Well Number 1B
GRID No. 14538	Operator Name BURLINGTON RESOURCES OIL & GAS COMPANY		Elevation 6504'

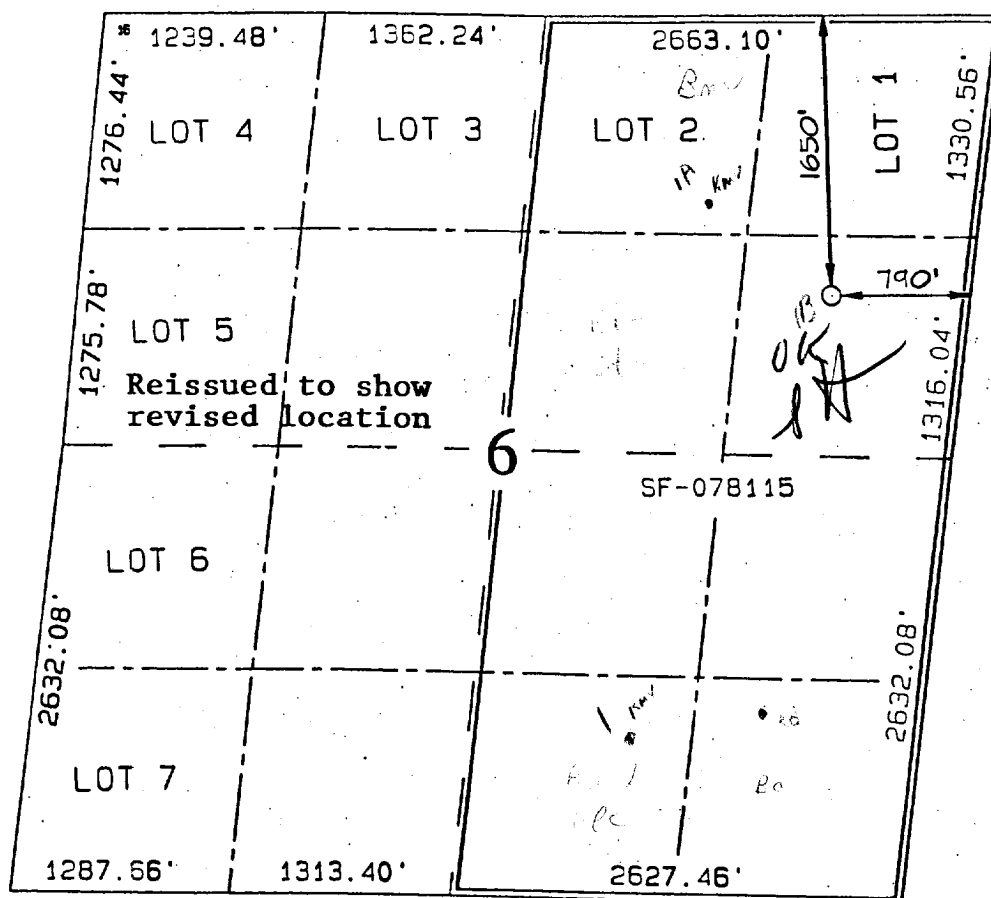
10 Surface Location

UL or lot no.	Section	Township	Range	Lot 1st	Feet from the	North/South line	Feet from the	East/West line	County
H	6	31N	11W		1650	NORTH	790	EAST	SAN JUAN

11 Bottom Hole Location If Different From Surface

UL or lot no.	Section	Township	Range	Lot 1st	Feet from the	North/South line	Feet from the	East/West line	County
12 Dedicated Acres MV/DK:E/320.69		13 Joint or Infill		14 Consolidation Code		15 Order No.			

NO ALLOWABLE WILL BE ASSIGNED TO THIS COMPLETION UNTIL ALL INTERESTS HAVE BEEN CONSOLIDATED OR A NON-STANDARD UNIT HAS BEEN APPROVED BY THE DIVISION



17 OPERATOR CERTIFICATION

I hereby certify that the information contained herein is true and complete to the best of my knowledge and belief

Signature

Peggy Cole

Printed Name

Regulatory Administrator

Title

1-4-00

Date

18 SURVEYOR CERTIFICATION

I hereby certify that the well location shown on this plat was plotted from field notes of actual surveys made by or under my supervision, and that the same is true and correct to the best of my belief.

OCTOBER 15, 1999

Date of Survey

Signature and Seal of Registered Surveyor



OPERATIONS PLAN

Well Name: Grenier #1B
Location: 1650' FNL, 790' FEL, Sec 6, T-31-N, R-11-W
San Juan County, NM
Latitude 36° 55.8, Longitude 108° 01.4
Formation: Blanco Mesa Verde/Basin Dakota
Elevation: 6504' GL

<u>Formation Tops:</u>	<u>Top</u>	<u>Bottom</u>	<u>Contents</u>
Surface	San Jose	1542'	
Ojo Alamo	1542'	1565'	aquifer
Kirtland	1565'	2475'	gas
Fruitland	2475'	3135'	gas
Pictured Cliffs	3135'	3275'	gas
Lewis	3275'	3802'	gas
Intermediate TD	3375'		
Mesa Verde	3802'	4226'	gas
Chacra	4226'	4751'	gas
Massive Cliff House	4751'	4942'	gas
Menefee	4942'	5392'	gas
Massive Point Lookout	5392'	5762'	gas
Mancos	5762'	6746'	gas
Gallup	6746'	7464'	gas
Greenhorn	7464'	7516'	gas
Graneros	7516'	7574'	gas
Dakota	7574'		gas
TD (4 1/2" liner)	7779'		

Logging Program:

Open hole - AIT, CNL-CDL - TD to intermediate TD
CNL-CDL, CBL-CCL-GR - intermediate TD to surface
Cased hole - CBL-CCL-GR - TD to surface

Mud Program:

<u>Interval</u>	<u>Type</u>	<u>Weight</u>	<u>Vis.</u>	<u>Fluid Loss</u>
0- 200'	Spud	8.4-9.0	40-50	no control
200- 3375'	LSND	8.4-9.0	30-60	no control
3375- 7779'	Gas	n/a	n/a	n/a

Pit levels will be visually monitored to detect gain or loss of fluid control.

Casing Program (as listed, the equivalent, or better):

<u>Hole Size</u>	<u>Depth Interval</u>	<u>Csg. Size</u>	<u>Wt.</u>	<u>Grade</u>
12 1/4"	0' - 200'	9 5/8"	32.3#	WC-50
8 3/4"	0' - 3375'	7"	20.0#	J-55
6 1/4"	3275' - 7779'	4 1/2"	10.5#	K-55

Tubing Program:

0' - 7779' 2 3/8" 4.70# EUE

BOP Specifications, Wellhead and Tests:

Surface to Intermediate TD -

11" 2000 psi minimum double gate BOP stack (Reference Figure #1).
After nipple-up prior to drilling out surface casing, rams and casing will be tested to 600 psi for 30 minutes.

Intermediate TD to Total Depth -

11" 2000 psi minimum double gate BOP stack (Reference Figure #1).
After nipple-up prior to drilling out intermediate casing, rams and casing will be tested to 1500 psi for 30 minutes.

Surface to Total Depth -

2" nominal, 2000 psi minimum choke manifold (Reference Figure #3).

BURLINGTON RESOURCES OIL & GAS COMPANY GRENIER #1B

1650' FNL & 790' FEL, SECTION 6, T31N, R11W, N.M.P.M.
SAN JUAN COUNTY, NEW MEXICO

APD MAP #1

550' NEW BLM CONSTRUCTION
150' SW/NE SECTION 6, T31N, R11W
400' SE/NE SECTION 6, T31N, R11W.

EXISTING
R.O.W.

NEW BLM
R.O.W.

