

UNITED STATES
DEPARTMENT OF THE INTERIOR
BUREAU OF LAND MANAGEMENT

APPLICATION FOR PERMIT TO DRILL, DEEPEN, OR PLUG BACK

1a. Type of Work DRILL	5. Lease Number NM-33055 Unit Reporting Number
1b. Type of Well GAS	6. If Indian, All. or Tribe
2. Operator BURLINGTON RESOURCES Oil & Gas Company	7. Unit Agreement Name
3. Address & Phone No. of Operator PO Box 4289, Farmington, NM 87499 (505) 326-9700	8. Farm or Lease Name Trail Canyon 9. Well Number #103
4. Location of Well 1500' FNL, 865' FEL Latitude 36° 59.2, Longitude 107° 42.6	10. Field, Pool, Wildcat Basin Fruitland Coal 11. Sec., Twn, Rge, Mer. (NMPM) H Sec. 18, T-32-N, R-8-W API # 30-045-30264
14. Distance in Miles from Nearest Town 5 mi from Lo Boca	12. County San Juan 13. State NM
15. Distance from Proposed Location to Nearest Property or Lease Line 865'	
16. Acres in Lease	17. Acres Assigned to Well 271.65 N/2
18. Distance from Proposed Location to Nearest Well, Drig, Compl, or Applied for on this Lease 75' This action is subject to technical and procedural review pursuant to 43 CFR 3165.3 and appeal pursuant to 43 CFR 3165.4.	20. Rotary or Cable Tools Rotary
19. Proposed Depth 3551'	
21. Elevations (DF, FT, GR, Etc.) 6630' GL	22. Approx. Date Work will Start DRILLING OPERATIONS AUTHORIZED ARE SUBJECT TO COMPLIANCE WITH ATTACHED "GENERAL REQUIREMENTS"
23. Proposed Casing and Cementing Program See Operations Plan attached	
24. Authorized by: <u><i>Danny Cale</i></u> Regulatory/Compliance Administrator	<u>2-8-00</u> Date

PERMIT NO. _____

APPROVAL DATE _____

APPROVED BY /s/ Jim Lovato

TITLE _____

DATE MAY 30 2000

Archaeological Report to be submitted

Threatened and Endangered Species Report to be submitted

NOTE: This format is issued in lieu of U.S. BLM Form 3160-3

Title 18 U.S.C. Section 1001, makes it a crime for any person knowingly and willfully to make to any department or agency of the United States any false, fictitious or fraudulent statements or presentations as to any matter within its jurisdiction.

OK

UNION

CP

District I
PO Box 1980, Hobbs, NM 88241-1980

State of New Mexico
Energy, Minerals & Natural Resources Department

Form C-102
Revised February 21, 1994

District II
PO Drawer DD, Artesia, NM 88211-0719

OIL CONSERVATION DIVISION

Instructions on back
Submit to Appropriate District Office
State Lease - 4 Copies
Fee Lease - 3 Copies

District III
1000 Rio Brazos Rd., Aztec, NM 87410

PO Box 2088
Santa Fe, NM 87504-2088

District IV
PO Box 2088, Santa Fe, NM 87504-2088

☐ AMENDED REPORT

WELL LOCATION AND ACREAGE DEDICATION PLAT

*API Number 30-045-30744	*Pool Code 71629	*Pool Name Basin Fruitland Coal
*Property Code 18631	*Property Name TRAIL CANYON	*Well Number 103
*OGRID No. 14538	*Operator Name BURLINGTON RESOURCES OIL & GAS COMPANY	*Elevation 6630'

¹⁰ Surface Location

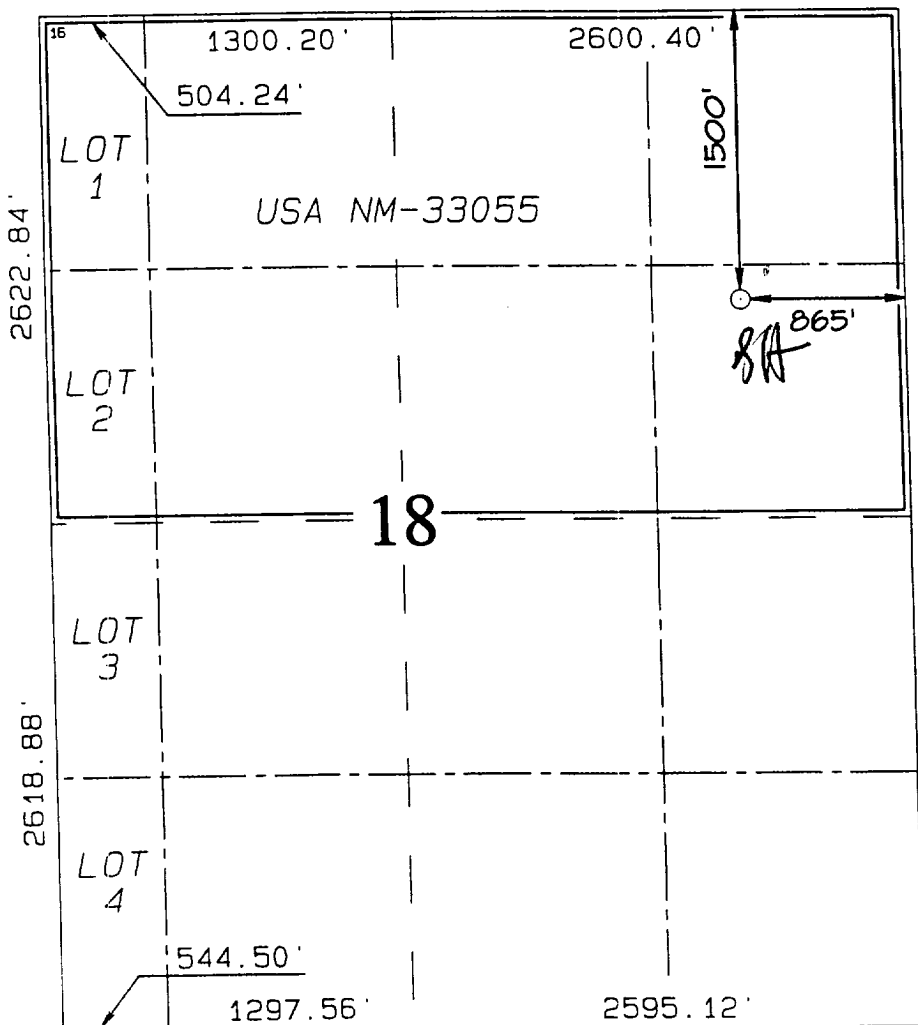
UL or lot no.	Section	Township	Range	Lot 10n	Feet from the	North/South line	Feet from the	East/West line	County
H	18	32N	8W		1500	NORTH	865	EAST	SAN JUAN

¹¹ Bottom Hole Location If Different From Surface

UL or lot no.	Section	Township	Range	Lot 10n	Feet from the	North/South line	Feet from the	East/West line	County

¹² Dedicated Acres N/271.65	¹³ Joint or Infill	¹⁴ Consolidation Code	¹⁵ Order No.
--	-------------------------------	----------------------------------	-------------------------

NO ALLOWABLE WILL BE ASSIGNED TO THIS COMPLETION UNTIL ALL INTERESTS HAVE BEEN CONSOLIDATED OR A NON-STANDARD UNIT HAS BEEN APPROVED BY THE DIVISION



¹⁷ OPERATOR CERTIFICATION

I hereby certify that the information contained herein is true and complete to the best of my knowledge and belief

Peggy Cole
Signature

Peggy Cole
Printed Name

Regulatory Administrator
Title

2-8-00
Date

Date

¹⁸ SURVEYOR CERTIFICATION

I hereby certify that the well location shown on this plat was plotted from field notes of actual surveys made by me or under my supervision, and that the same is true and correct to the best of my belief.

JANUARY 6, 2000
Date of Survey

Signature and Seal of Professional Surveyor

NEALE C. EDWARDS
NEALE C. EDWARDS
NEW MEXICO
6857
Professional Surveyor
Certificate Number 6857

UNITED STATES
DEPARTMENT OF THE INTERIOR
BUREAU OF LAND MANAGEMENT

Sundry Notices and Reports on Wells

070 FARMINGTON, NM

1. Type of Well
GAS

2. Name of Operator

**BURLINGTON
RESOURCES**

OIL & GAS COMPANY

3. Address & Phone No. of Operator

PO Box 4289, Farmington, NM 87499 (505) 326-9700

4. Location of Well, Footage, Sec., T, R, M

1500' FNL, 865' FEL, Sec.18, T-32-N, R-8-W, NMPM

5. Lease Number
NM-33055

6. If Indian, All. or
Tribe Name

Unit Agreement Name

Well Name & Number
Trail Canyon #103

9. API Well No.
30-045-30264

10. Field and Pool
Basin Fruitland Coal

11. County and State
San Juan Co, NM

12. CHECK APPROPRIATE BOX TO INDICATE NATURE OF NOTICE, REPORT, OTHER DATA

Type of Submission

☒ Notice of Intent
☐ Subsequent Report
☐ Final Abandonment

Type of Action

☐ Abandonment
☐ Recompletion
☐ Plugging Back
☐ Casing Repair
☐ Altering Casing
☐ Other -
☒ Change of Plans
☐ New Construction
☐ Non-Routine Fracturing
☐ Water Shut off
☐ Conversion to Injection

13. Describe Proposed or Completed Operations

It is intended to change the casing & cement program on the subject well. Attached is the revised operations plan.

14. I hereby certify that the foregoing is true and correct.

Signed Deann Cale Title Regulatory Administrator Date 3/24/00

TLW

(This space for Regulatory Office use)

APPROVED BY Jim Lovato Title _____ Date MAY 30 2000

CONDITION OF APPROVAL, if any:

Title 18 U.S.C. Section 1001, makes it a crime for any person knowingly and willfully to make to any department or agency of the United States any false, fictitious or fraudulent statements or representations as to any matter within its jurisdiction.

NMOC

OPERATIONS PLAN

Well Name: Trail Canyon #103
Location: 1500' FNL, 865' FEL Section 18, T-32-N, R-8-W
Latitude 36° 59.2, Longitude 107° 42.6
San Juan County, NM
Formation: Basin Fruitland Coal
Elevation: 6730' GL

Formation:	Top	Bottom	Contents
Surface	San Jose	2597'	
Ojo Alamo	2597'	2671'	aquifer
Kirtland	2671'	3157'	
Fruitland	3157'	3387'	gas
Fruitland Coal	3387'	3661'	gas
Total Depth	3661'		

Logging Program: GR, DEN, from TD to intermediate TD.

Coring Program: none

Mud Program:

<u>Interval</u>	<u>Type</u>	<u>Weight</u>	<u>Vis.</u>	<u>Fluid Loss</u>
0- 200'	Spud	8.4-9.0	40-50	no control
200-3330'	Non-dispersed	8.4-9.0	30-60	no control
3330-3661'	Air			

Casing Program (as listed, the equivalent, or better):

<u>Hole Size</u>	<u>Depth Interval</u>	<u>Csq. Size</u>	<u>Wt.</u>	<u>Grade</u>
12 1/4"	0' - 200'	9 5/8"	32.3#	H-40
8 3/4"	200' - 3330'	7"	20.0#	K-55
6 1/4"	3230' - 3661'	5 1/2"	15.5#	K-55

Tubing Program:

0' - 3661'	2 3/8"	4.7#	J-55
------------	--------	------	------

Float Equipment: 9 5/8" surface casing - saw tooth guide shoe. Centralizers will be run in accordance with Onshore Order #2.

7" intermediate casing - guide shoe and self-fill float collar. Three centralizers run every fourth joint above shoe. Two turbolizing type centralizers - one below and one into the base of the Ojo Alamo @ 2571'. Standard centralizers thereafter every fourth joint up to the base of the surface pipe.

5 1/2" production casing - Pre-drilled liner run to the 7" casing with an overlap. Liner hanger is a slip grip type.

Wellhead Equipment: 9 5/8" x 7" x 2 3/8" x 11" 3000 psi xmas tree assembly.

Trail Canyon #103

Cementing:

9 5/8" surface casing - cement with 159 sx Class "B" cement with 1/4# flocele/sx and 3% calcium chloride (188 cu.ft. of slurry, 200% excess to circulate to surface). WOC 8 hrs. Test casing to 600 psi/30 minutes.

7" intermediate casing - lead w/305 sacks Class "B" with 3% sodium metasilicate, 5 pps gilsonite, and 1/2#/sack flocele. Tail with 90 sacks 50/50 Class "B" Pozmix with 2% gel, 2% calcium chloride, 1/2#/sack flocele and 7 pps gilsonite (1001 cu.ft., 100% excess to circulate to surface).

5 1/2" liner - uncemented.

BOP and tests:

Surface to intermediate TD - 11" 2000 psi (minimum) double gate BOP stack (Reference Figure #1). Prior to drilling out surface casing, test rams to 600#/30 min.

Intermediate TD to Total Depth - 7 1/6" 3000 psi (minimum) double gate BOP stack (Reference Figure #2). Prior to drilling out intermediate casing, test blind rams and casing to 2500 psi for 30 minutes; all pipe rams and casing to 2500 psi for 30 minutes each.

From surface to TD - choke manifold (Reference Figure #3).

Pipe rams will be actuated at least once each day and blind rams actuated once each trip to test proper functioning. An upper kelly cock valve with handle and drill string safety valves to fit each drill string will be maintained and available on the rig floor.

Additional information:

- * The Fruitland Coal formation will be completed.
- * Anticipated pore pressure for the Fruitland is 1000 psi.
- * This gas is dedicated.
- * The north half of section 18 is dedicated to the Fruitland Coal.

Date: 4/3/2000

Drilling Engineer: Steve Campbell

BURLINGTON RESOURCES OIL & GAS COMPANY TRAIL CANYON #103

1500' FNL & 865' FEL, SECTION 18, T32N, R8W, N.M.P.M.
SAN JUAN COUNTY, NEW MEXICO

