

District I  
1625 N. French Dr., Hobbs, NM 88240  
District II  
811 South First, Artesia, NM 88210  
District III  
1000 Rio Brazos Road, Aztec, NM 87410  
District IV  
2040 South Pacheco, Santa Fe, NM 87505

State of New Mexico  
Energy Minerals and Natural Resources

Form C-101  
Revised March 17, 1999

Oil Conservation Division  
2040 South Pacheco  
Santa Fe, NM 87505

Submit to appropriate District Office  
State Lease - 6 Copies  
Fee Lease - 5 Copies

AMENDED REPORT

APPLICATION FOR PERMIT TO DRILL, RE-ENTER, DEEPEN, PLUG BACK, OR ADD A ZONE

Operator Name and Address <b>Amoco Production Company</b> <b>P. O. Box 3092</b> <b>Houston, Texas 77253</b>		Operator ID Number <b>000778</b>
Property Code <b>001179</b>		API Number <b>30 045-30 267</b>
Property Name <b>Uptegrove Gas Com</b>		Well No. <b>1B</b>

Surface Location

UL or lot no.	Section	Township	Range	Lot Idn	Feet from the	North/South line	Feet from the	East/West line	County
<b>O</b>	<b>33</b>	<b>32N</b>	<b>10W</b>		<b>790'</b>	<b>South</b>	<b>2170'</b>	<b>East</b>	<b>San Juan</b>

Proposed Bottom Hole Location If Different From Surface

UL or lot no.	Section	Township	Range	Lot Idn	Feet from the	North/South line	Feet from the	East/West line	County
Proposed Pool 1 <b>Blanco Mesaverde</b>					Proposed Pool 2				

Work Type Code <b>N - New Drill</b>	Well Type Code <b>Gas</b>	Cable/Rotary <b>Rotary/Top Drive</b>	Lease Type Code <b>Fee</b>	Ground Level Elevation <b>5859'</b>
Multiple <b>No</b>	Proposed Depth <b>5224'</b>	Formation <b>Mesaverde</b>	Contractor <b>Aztec</b>	Spud Date <b>06/21/2000</b>

Proposed Casing and Cement Program

Hole Size	Casing Size	Casing weight/foot	Setting Depth	Sacks of Cement	Estimated TOC
(1) <b>12 1/4"</b>	<b>9 5/8"</b>	<b>32.3#</b>	<b>135'</b>	<b>150 SXS CLS B</b>	<b>Surface</b>
(2) <b>8 3/4"</b>	<b>7"</b>	<b>20#</b>	<b>2168'</b>	<b>326 SXS CLS B</b>	<b>Surface</b>
(3) <b>6 1/4"</b>	<b>4 1/2"</b>	<b>10.5#</b>	<b>5224'</b>	<b>442 SXS CLS B</b>	<b>2068'</b>

Describe the proposed program. If this application is to DEEPEN or PLUG BACK, give the data on the present productive zone and proposed new productive zone. Describe the blowout prevention program, if any. Use additional sheets if necessary.

**OBJECTIVE: Drill 100' into the Mancos Shale, set 4 1/2" Liner across Mesaverde, Stimulate Cliff House, Menefee, and Point Lookout intervals. Run Cased Hole (GR-CCL-TDT) logs: TDT from PBDT to TOL. GR-CCL from PDTB to Surface.**

**(1) Circulate Cement to Surface (2) Set Casing 50' above Fruitland. (3) Liner Lap should be minimum of 100'.**

**Mud Program: 0' - 135' Type - Spud Weight 8.6 - 9.2**  
**135' - 2168' Type - Water Weight 8.6 - 9.2**  
**2168' - TD Type - Gas/Air/Mist Volume sufficient to maintain a stable & clean wellbore**

**The hole will require sweeps to keep unloaded while fresh water drilling. Let hole conditions dictate frequency**  
**Top set Fruitland to minimize lost circulation, air volume to maintain hole stability**

**Completion: Rigless, 2 -3 Stage Limited Entry Hydraulic Frac.**

I hereby certify that the information given above is true and complete to the best of my knowledge and belief.

Signature:

Printed name: **Mary Corley**

Title: **Sr. Business Analyst**

Date: **06/01/2000**

Phone: **281-366-4491**

OIL CONSERVATION DIVISION

Approved by:

Title: **DEPUTY OIL & GAS INSPECTOR, DIST. 40**

Approval Date: **JUN - 2 2000** Expiration Date: **JUN - 2 2001**

Conditions of Approval:

Attached

District I  
PO Box 1980, Hobbs NM 88241-1980  
District II  
PO Drawer KK, Artesia, NM 87211-0719  
District III  
1000 Rio Brazos Rd., Aztec, NM 87410  
District IV  
PO Box 2088, Santa Fe, NM 87504-2088

State of New Mexico  
Energy, Minerals & Natural Resources Department

OIL CONSERVATION DIVISION  
PO Box 2088  
Santa Fe, NM 87504-2088

Form C-102

Revised February 21, 1994

Instructions on back  
Submit to Appropriate District Office  
State Lease - 4 Copies  
Fee Lease - 3 Copies

☐ AMENDED REPORT

WELL LOCATION AND ACREAGE DEDICATION PLAT

<sup>1</sup> API Number 30-045-30267	<sup>2</sup> Pool Code 72319	<sup>3</sup> Pool Name Blanco Mesaverde
<sup>4</sup> Property Code 001179	<sup>5</sup> Property Name UPTEGROVE GAS COM	<sup>6</sup> Well Number # 1B
<sup>7</sup> OGRID No. 000778	<sup>8</sup> Operator Name AMOCO PRODUCTION COMPANY	<sup>9</sup> Elevation 5859

<sup>10</sup> Surface Location

UL or Lot No. O	Section 33	Township 32 N	Range 10 W	Lot Idn	Feet from the 790	North/South line SOUTH	Feet from the 2170	East/West line EAST	County SAN JUAN
--------------------	---------------	------------------	---------------	---------	----------------------	---------------------------	-----------------------	------------------------	--------------------

<sup>11</sup> Bottom Hole Location If Different From Surface

<sup>7</sup> UL or lot no.	Section	Township	Range	Lot Idn	Feet from the	North/South line	Feet from the	East/West line	County
----------------------------	---------	----------	-------	---------	---------------	------------------	---------------	----------------	--------

<sup>12</sup> Dedicated Acres 323.25	<sup>13</sup> Joint or Infill 3805	<sup>14</sup> Consolidation Code	<sup>15</sup> Order No.
---	---------------------------------------	----------------------------------	-------------------------

NO ALLOWABLE WILL BE ASSIGNED TO THIS COMPLETION UNTIL ALL INTERESTS HAVE BEEN CONSOLIDATED  
OR A NON-STANDARD UNIT HAS BEEN APPROVED BY THE DIVISION

<sup>16</sup>	<sup>17</sup> OPERATOR CERTIFICATION I hereby certify that the information contained herein is true and complete to the best of my knowledge and belief. Signature: Mary Copley Printed Name: Mary Copley Title: Sr. Regulatory Analyst Date: 6.1.2000
<sup>18</sup> SURVEYOR CERTIFICATION I hereby certify that the well location shown on this plat was plotted from field notes of actual surveys made by me or under my supervision, and that the same is true and correct to the best of my belief. Date of Survey: May 19, 2000 Signature and Seal of Professional Surveyor: Gary D. Kohn 7016 Certificate Number: 7016	

**Amoco Production Company  
BOP Pressure Testing Requirements**

**Well Name:** Uptegrove Gas Com 1B  
**County:** San Juan

**State:** New Mexico

Formation	TVD	Anticipated Bottom Hole Pressure	Maximum Anticipated Surface Pressure **
Ojo Alamo	1152'		
Kirtland	1316'		
Fruitland Coal	2218'		
Pictured Cliffs	2665'		
Lewis Shale	2737'		
Cliff House	4503'	500	0
Menefee Shale	4572'		
Point Lookout	4969'	600	0
Mancos	5224'		

**\*\* Note:** Determined using the following formula:  $ABHP - (.22 * TVD) = ASP$

<b>Requested BOP Pressure Test Exception: 750 PSI</b>
---

---

**SAN JUAN BASIN  
Mesaverde Formation  
Pressure Control Equipment**

**Background**

The objective Mesaverde formation maximum surface pressure is anticipated to be less than 1000 PSI, based on shut-in surface pressures from adjacent wells. Pressure control equipment working pressure minimum requirements are therefore 2000 PSI. Equipment to be used will conform to API RP-53 (Figure 2.C.2) for a 2000 PSI system per Federal Onshore Order No. 2. Due to available conventional equipment within the area, 3000 PSI rated pressure control equipment will typically be utilized in a double ram type arrangement. Regional drilling rights to be utilized have substructure height limitations which exclude the use of annular preventers; therefore a rotating head will be installed above these rams. This pressure control equipment will be utilized for conventional drilling below conductor to total depth. No abnormal temperature, pressure, or Hydrogen Sulfide gas is anticipated.

**Equipment Specification**

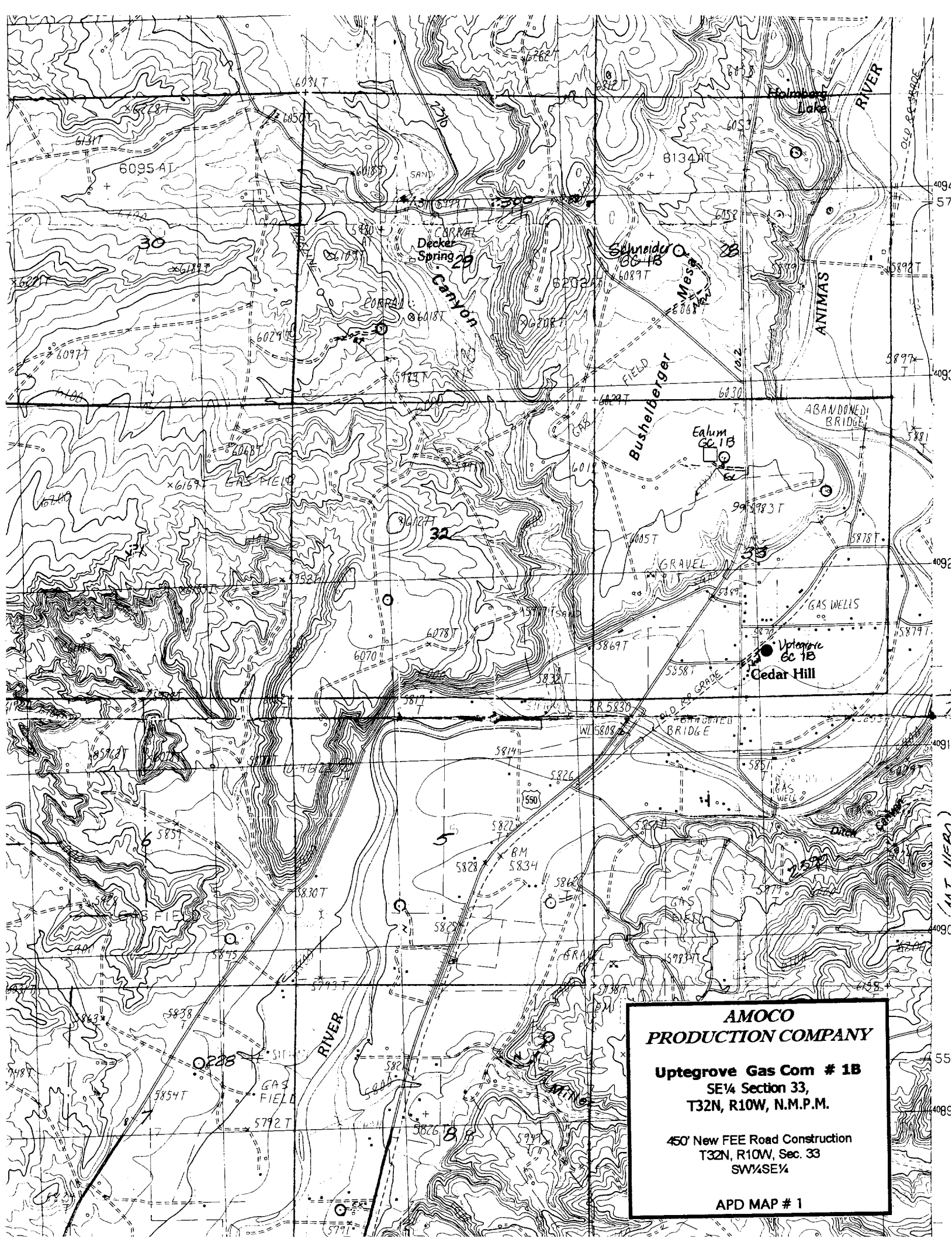
**Interval**

**BOP Equipment**

Below conductor casing to total depth

11" nominal or 7 1/16", 3000 PSI double ram  
preventer with rotating head.

All ram type preventers and related control equipment will be hydraulically tested to 250 PSI (low pressure) and 750 PSI (high pressure), upon installation, following any repairs or equipment replacements, or at 30 day intervals. Accessories to BOP equipment will include Kelly cock, upper Kelly cock with a handle available, floor safety valves and choke manifold which will also be tested to equivalent pressure at the appropriate intervals.



**AMOCO  
PRODUCTION COMPANY**

**Uptegrove Gas Com # 1B**  
SE¼ Section 33,  
T32N, R10W, N.M.P.M.

450' New FEE Road Construction  
T32N, R10W, Sec. 33  
SW¼SE¼

APD MAP # 1