

District I
1625 N. French Dr., Hobbs, NM 88240
District II
811 South First, Artesia, NM 88210
District III
1000 Rio Brazos Road, Aztec, NM 87410
District IV
2040 South Pacheco, Santa Fe, NM 87505

State of New Mexico
Energy Minerals and Natural Resources

Form C-101
Revised March 17, 1999

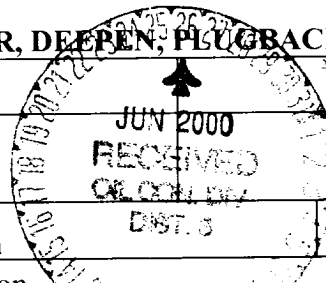
Oil Conservation Division
2040 South Pacheco
Santa Fe, NM 87505

Submit to appropriate District Office
State Lease - 6 Copies
Fee Lease - 5 Copies

AMENDED REPORT

APPLICATION FOR PERMIT TO DRILL, RE-ENTER, DEEPEN, PLUGBACK, OR ADD A ZONE

¹ Operator Name and Address Amoco Production Company P. O. Box 3092 Houston, Texas 77253		² OGRID Number 000778
³ Property Code 001195		⁴ Property Name Valentine Gas Com
⁵ Surface Location		⁶ Well No. 1B



UL or lot no.	Section	Township	Range	Lot Idn	Feet from the	North South line	Feet from the	East West line	County
G	32	32N	10W		1860'	North	2380'	East	San Juan

⁸ Proposed Bottom Hole Location If Different From Surface

UL or lot no.	Section	Township	Range	Lot Idn	Feet from the	North South line	Feet from the	East West line	County
⁹ Proposed Pool 1 Blanco Mesaverde					¹⁰ Proposed Pool 2				

¹¹ Work Type Code N - New Drill	¹² Well Type Code Gas	¹³ Cable Rotary Rotary/Top Drive	¹⁴ Lease Type Code Fee	¹⁵ Ground Level Elevation 6012'
¹⁶ Multiple No	¹⁷ Proposed Depth MD 5143'	¹⁸ Formation Mesaverde	¹⁹ Contractor Aztec	²⁰ Spud Date 07/19/2000

²¹ Proposed Casing and Cement Program

Hole Size	Casing Size	Casing weight/foot	Setting Depth	Sacks of Cement	Estimated TOC
(1) 12 1/4"	9 5/8"	32.3#	135'	150 SXS CLS B	Surface
(2) 8 3/4"	7"	20#	2100'	380 SXS CLS B	Surface
(3) 6 1/4"	4 1/2"	10.5#	5143'	320 SXS CLS A	2000'

²² Describe the proposed program. If this application is to DEEPEN or PLUG BACK, give the data on the present productive zone and proposed new productive zone. Describe the blowout prevention program, if any. Use additional sheets if necessary.

OBJECTIVE: Drill 100' into the Mancos Shale, set 4 1/2" Liner across Mesaverde, Stimulate Cliff House, Menefee, and Point Lookout intervals. Run Cased Hole (GR-CCL-TDT) logs: TDT from PBTD to TOL. GR-CCL from PDTB to Surface.

(1) Circulate Cement to Surface (2) Set Casing 50' above Fruitland. (3) Liner Lap should be minimum of 100'.

Mud Program: 0' - 135' Type - Spud Weight 8.6 - 9.2

135' - 2100' Type - Water Weight 8.6 - 9.2

2100' - TD Type - Gas/Air/Mist Volume sufficient to maintain a stable & clean wellbore

The hole will require sweeps to keep unloaded while fresh water drilling. Let hole conditions dictate frequency

Top set Fruitland to minimize lost circulation, air volume to maintain hole stability

Completion: Rigless, 2 -3 Stage Limited Entry Hydraulic Frac.

²³ I hereby certify that the information given above is true and complete to the best of my knowledge and belief.

Signature:

Melissa Velasco-Price

Printed name: **Melissa Velasco-Price**

Title: **Permitting Assistant**

Date: **06/21/2000**

Phone: **281-366-2548**

OIL CONSERVATION DIVISION

Approved by:

Title:

Approval Date:

Conditions of Approval:

Attached

Steve Hughes
DEPUTY OIL & GAS INSPECTOR, DIST. 4

JUN 26 2000

Expiration Date:

JUN 26 2001

District I
PO Box 1980, Hobbs NM 88241-1980
District II
PO Drawer KK, Artesia, NM 87211-0719
District III
1000 Rio Brazos Rd., Aztec, NM 87410
District IV
PO Box 2088, Santa Fe, NM 87504-2088

State of New Mexico
Energy, Minerals & Natural Resources Department

OIL CONSERVATION DIVISION
PO Box 2088
Santa Fe, NM 87504-2088

Form C-102
Revised February 21, 1994

Instructions on back
Submit to Appropriate District Office
State Lease - 4 Copies
Fee Lease - 3 Copies

☐ AMENDED REPORT

WELL LOCATION AND ACREAGE DEDICATION PLAT

¹ API Number 30-045-30288		² Pool Code 72319		³ Pool Name BIANCO MESAVERDE	
⁴ Property Code 001195		⁵ Property Name Valentine Gas Com			⁶ Well Number # 1B
⁷ OGRID No. 000778		⁸ Operator Name AMOCO PRODUCTION COMPANY			⁹ Elevation 6012

¹⁰ Surface Location

UL or Lot No.	Section	Township	Range	Lot Idn	Feet from the	North/South line	Feet from the	East/West line	County
G	32	32 N	10 W		1860	NORTH	2380	EAST	SAN JUAN

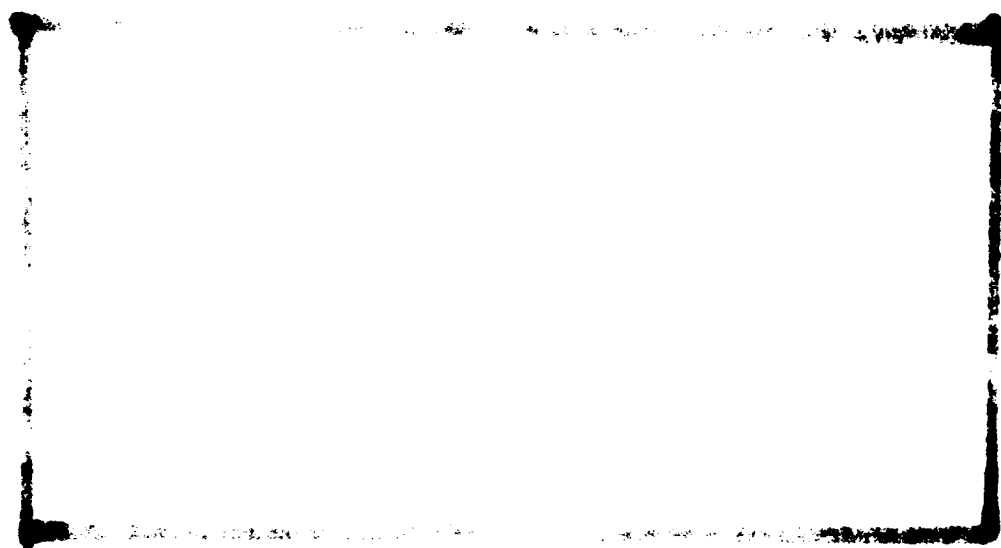
¹¹ Bottom Hole Location If Different From Surface

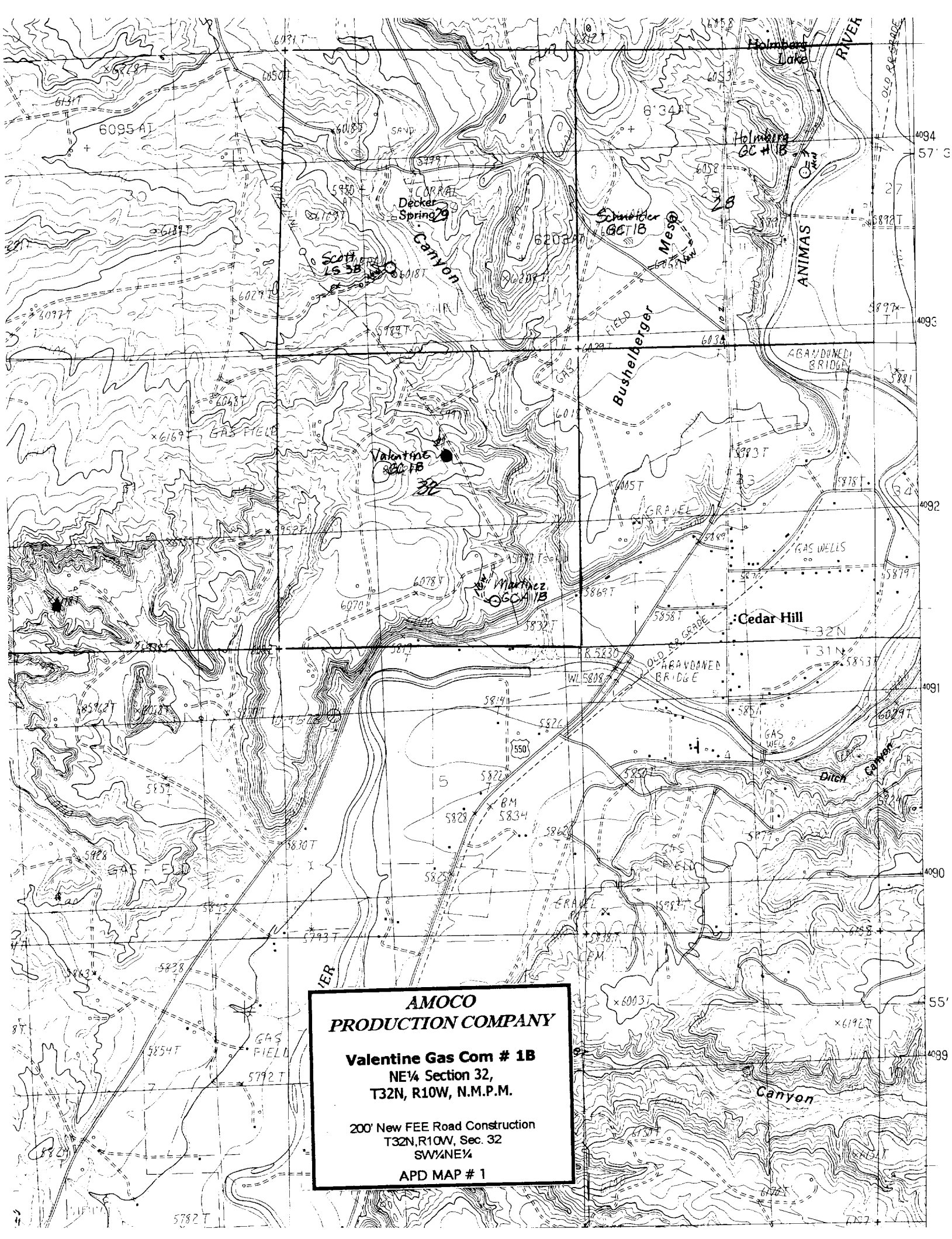
⁷ UL or lot no.	Section	Township	Range	Lot Idn	Feet from the	North/South line	Feet from the	East/West line	County

¹² Dedicated Acres 320.00M	¹³ Joint or Infill I	¹⁴ Consolidation Code	¹⁵ Order No.
--	------------------------------------	----------------------------------	-------------------------

NO ALLOWABLE WILL BE ASSIGNED TO THIS COMPLETION UNTIL ALL INTERESTS HAVE BEEN CONSOLIDATED
OR A NON-STANDARD UNIT HAS BEEN APPROVED BY THE DIVISION

<div><p>16</p><p>5429(R)</p><p>1860'</p><p>2380'</p><p>Lot 1</p><p>Lot 2</p><p>2769(R)</p><p>2645(R)</p></div>	<div><p>¹⁷ OPERATOR CERTIFICATION</p><p>I hereby certify that the information contained herein is true and complete to the best of my knowledge and belief.</p><p><i>Melissa Velasco Price</i> Signature Melissa Velasco Price Printed Name Permitting Asst Title 10-21-00 Date</p></div>
	<div><p>¹⁸ SURVEYOR CERTIFICATION</p><p>I hereby certify that the well location shown on this plat was plotted from field notes of actual surveys made by me or under my supervision, and that the same is true and correct to the best of my belief.</p><p>June 5, 2000 Date of Survey</p><p>GARY D. VANN Signature and Seal of Professional Surveyor</p><p>7016 Certificate Number</p></div>





**AMOCO
PRODUCTION COMPANY**

Valentine Gas Com # 1B
NE¼ Section 32,
T32N, R10W, N.M.P.M.

200' New FEE Road Construction
T32N, R10W, Sec. 32
SW¼NE¼
APD MAP # 1

**Amoco Production Company
BOP Pressure Testing Requirements**

Well Name: Valentine Gas Com 1B
County: San Juan

State: New Mexico

Formation	TVD	Anticipated Bottom Hole Pressure	Maximum Anticipated Surface Pressure **
Ojo Alamo	1130'		
Kirtland	1267'		
Fruitland Coal	2150'		
Pictured Cliffs	2443'		
Lewis Shale	2564'		
Cliff House	4113'	500	0
Monofee Shale	4231'		
Point Lookout	4741'	600	0
Mancos	5043'		

**** Note:** Determined using the following formula: $ABHP - (.22 * TVD) = ASP$

Requested BOP Pressure Test Exception: 750 PSI

**SAN JUAN BASIN
Mesaverde Formation
Pressure Control Equipment**

Background

The objective Mesaverde formation maximum surface pressure is anticipated to be less than 1000 PSI, based on shut-in surface pressures from adjacent wells. Pressure control equipment working pressure minimum requirements are therefore 2000 PSI. Equipment to be used will conform to API RP-63 (Figure 2.C.2) for a 2000 PSI system per Federal Onshore Order No. 2. Due to available conventional equipment within the area, 3000 PSI rated pressure control equipment will typically be utilized in a double ram type arrangement. Regional drilling rights to be utilized have substructure height limitations which exclude the use of annular preventors; therefore a rotating head will be installed above these rams. This pressure control equipment will be utilized for conventional drilling below conductor to total depth. No abnormal temperature, pressure, or Hydrogen Sulfide gas is anticipated.

Equipment Specification

Interval

BOP Equipment

Below conductor casing to total depth

11" nominal or 7 1/16", 3000 PSI double ram
preventer with rotating head.

All ram type preventers and related control equipment will be hydraulically tested to 250 PSI (low pressure) and 750 PSI (high pressure), upon installation, following any repairs or equipment replacements, or at 30 day intervals. Accessories to BOP equipment will include Kelly cock, upper Kelly cock with a handle available, floor safety valves and choke manifold which will also be tested to equivalent pressure at the appropriate intervals.