

State of New Mexico
Energy, Minerals & Natural Resources Department

Form C-101
Revised October 18, 199

District I
PO Box 1980, Hobbs, NM 88241-1980
District II
811 S. 1st Street, Artesia, NM 88210-2834
District III
1000 Rio Brazos Rd., Aztec, NM 87410
District IV
2040 South Pacheco, Santa Fe, NM 87505

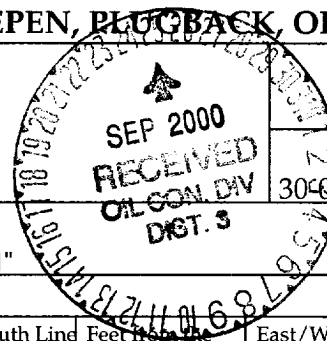
OIL CONSERVATION DIVISION
2040 South Pacheco
Santa Fe, NM 87505

Instructions on back
Submit to Appropriate District Office
State Lease - 6 Copies
Fee Lease - 5 Copies

☐ AMENDED REPORT

APPLICATION FOR PERMIT TO DRILL, RE-ENTER, DEEPEN, PLUG BACK, OR ADD A ZONE

¹ Operator name and Address Cross Timbers Operating Company 2700 Farmington Ave., Bldg. K. Ste 1 Farmington, NM 87401		² OGRID Number 167067
⁴ Property Code 22829	⁵ Property Name State Gas Com "N"	³ API Number 45 30373
⁶ Well No. #1B		



⁷ Surface Location									
UL or lot no.	Section	Township	Range	Lot. Idn	Feet from the	North/South Line	Feet from the	East/West line	County
C	16	31N	12W		747'	North	1,548'	West	San Juan

⁸ Proposed Bottom Hole Location If Different From Surface									
UL or lot no.	Section	Township	Range	Lot. Idn	Feet from the	North/South Line	Feet from the	East/West line	County
⁹ Proposed Pool 1 Blanco Mesaverde					¹⁰ Proposed Pool 2				

¹¹ Work Type Code N -	¹² Well Type Code G -	¹³ Cable/Rotary R	¹⁴ Lease Type Code S -	¹⁵ Ground Level Elevation 6,166' Ground Level
¹⁶ Multiple No	¹⁷ Proposed Depth 5,550'	¹⁸ Formation Mesaverde	¹⁹ Contractor Not yet awarded	²⁰ Spud Date Winter, 2001

²¹ Proposed Casing and Cement Program					
Hole Size	Casing Size	Casing weight/foot	Setting Depth	Sacks of Cement	Estimated TOC
12-1/4"	8-5/8"	24.0 #/ft	400'	275 sx	Surface ✓
7-7/8"	4-1/2"	10.5 #/ft	5,550' ✓	950 sx	Surface ✓

²² Describe the proposed program. If this application is to DEEPEN or PLUG BACK give the data on the present productive zone and proposed new productive zone. Describe the blowout prevention program, if any. Use additional sheets if necessary.

Drill to 400' Run new 8-5/8" csg. Cmt csg w/275 sx cl "G" cmt (15.8 ppg, 1.145 cuft/sx) w/2% CaCl & 1/4# Celloflake. Attempt to circ cmt to surface. NU BOP. Test BOP. Mix mud. Drill ahead w/7-7/8 hole.

Drill to TD (@ 5,550'). Log well. Run new 4-1/2" csg to btm. Cmt csg with approx 475 sx cl "G" with 3% extender, 2% CaCl2 and 1/4# celloflake mixed @ 11.4 ppg, 2.88 cuft/sx followed by 475 sx cl "G" cmt with 3% extender, 2% CaCl2 and 1/4# celloflake mixed @ 13.5 ppg, 1.71 cuft/sx. Attempt to circ cmt to surface. Final cement volumes will be obtained from caliper log + 30%. See enclosed drawing for BOP stack configuration.

²³ I hereby certify that the information given above is true and complete to the best of my knowledge and belief.

Signature: <i>Jeffrey W. Patton</i> Printed name: Jeffrey W. Patton Title: Drilling Engineer	<p align="center">OIL CONSERVATION DIVISION</p> Approved by: <i>[Signature]</i> Title: DEPUTY OIL & GAS INSPECTOR, DIST. #3 Approval Date: SEP 25 2000 Expiration Date: SEP 25 2001
--	--

DISTRICT I
P.O. Box 1980, Hobbs, N.M. 88241-1980

DISTRICT II
P.O. Drawer DD, Artesia, N.M. 88211-0719

DISTRICT III
1000 Rio Brazos Rd., Aztec, N.M. 87410

DISTRICT IV
PO Box 2088, Santa Fe, NM 87504-2088

State of New Mexico
Energy, Minerals & Natural Resources Department

OIL CONSERVATION DIVISION

P.O. Box 2088
Santa Fe, NM 87504-2088

Form C-102
Revised February 21, 1994

Instructions on back
Submit to Appropriate District Office
State Lease - 4 Copies
Fee Lease - 3 Copies

☐ AMENDED REPORT

WELL LOCATION AND ACREAGE DEDICATION PLAT

¹ API Number 30-045-30373	² Pool Code 72319	³ Pool Name BLANCO MESAVERDE
⁴ Property Code 22829	⁵ Property Name STATE N	⁶ Well Number 1B
⁷ OCRID No. 167067	⁸ Operator Name CROSS TIMBERS OPERATING CO.	⁹ Elevation 6166'

¹⁰Surface Location

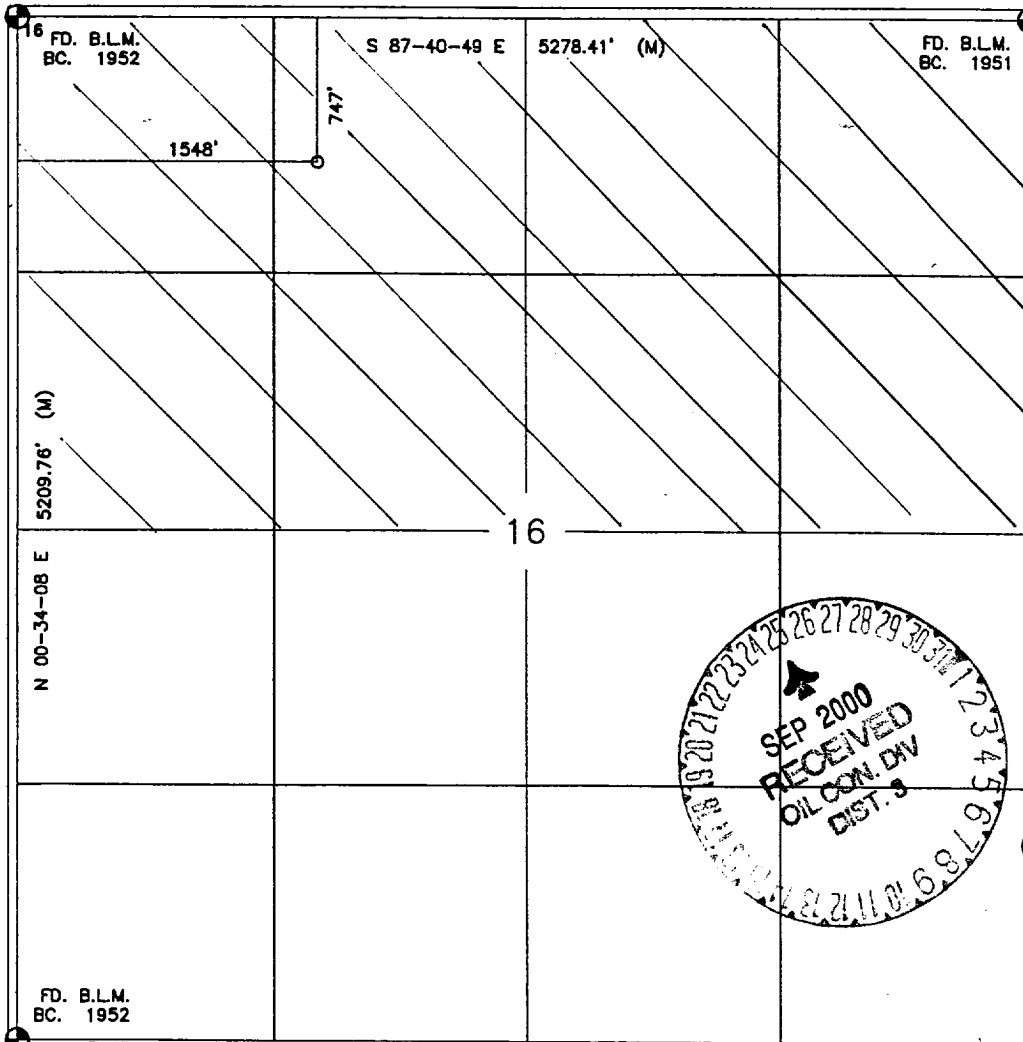
UL or lot no.	Section	Township	Range	Lot Idn	Feet from the	North/South line	Feet from the	East/West line	County
C	16	31-N	12-W		747	NORTH	1548	WEST	SAN JUAN

¹¹Bottom Hole Location If Different From Surface

UL or lot no.	Section	Township	Range	Lot Idn	Feet from the	North/South line	Feet from the	East/West line	County

¹² Dedicated Acres 320 N/2	¹³ Joint or Infill I	¹⁴ Consolidation Code	¹⁵ Order No.
--	------------------------------------	----------------------------------	-------------------------

NO ALLOWABLE WILL BE ASSIGNED TO THIS COMPLETION UNTIL ALL INTERESTS HAVE BEEN CONSOLIDATED
OR A NON-STANDARD UNIT HAS BEEN APPROVED BY THE DIVISION



17 OPERATOR CERTIFICATION

I hereby certify that the information contained herein is true and complete to the best of my knowledge and belief

Signature Jeff Patton

Printed Name JEFF PATTON

Title DRILLING ENGINEER

Date 9/9/00

18 SURVEYOR CERTIFICATION

I hereby certify that the well location shown on this plat was plotted from field notes of actual surveys made by me or under my supervision, and that the same is true and correct to the best of my belief.

Date of Survey 9-6-00

Signature and Seal of Professional Surveyor [Signature]

Certificate Number 8894

CROSS TIMBERS OPERATING COMPANY

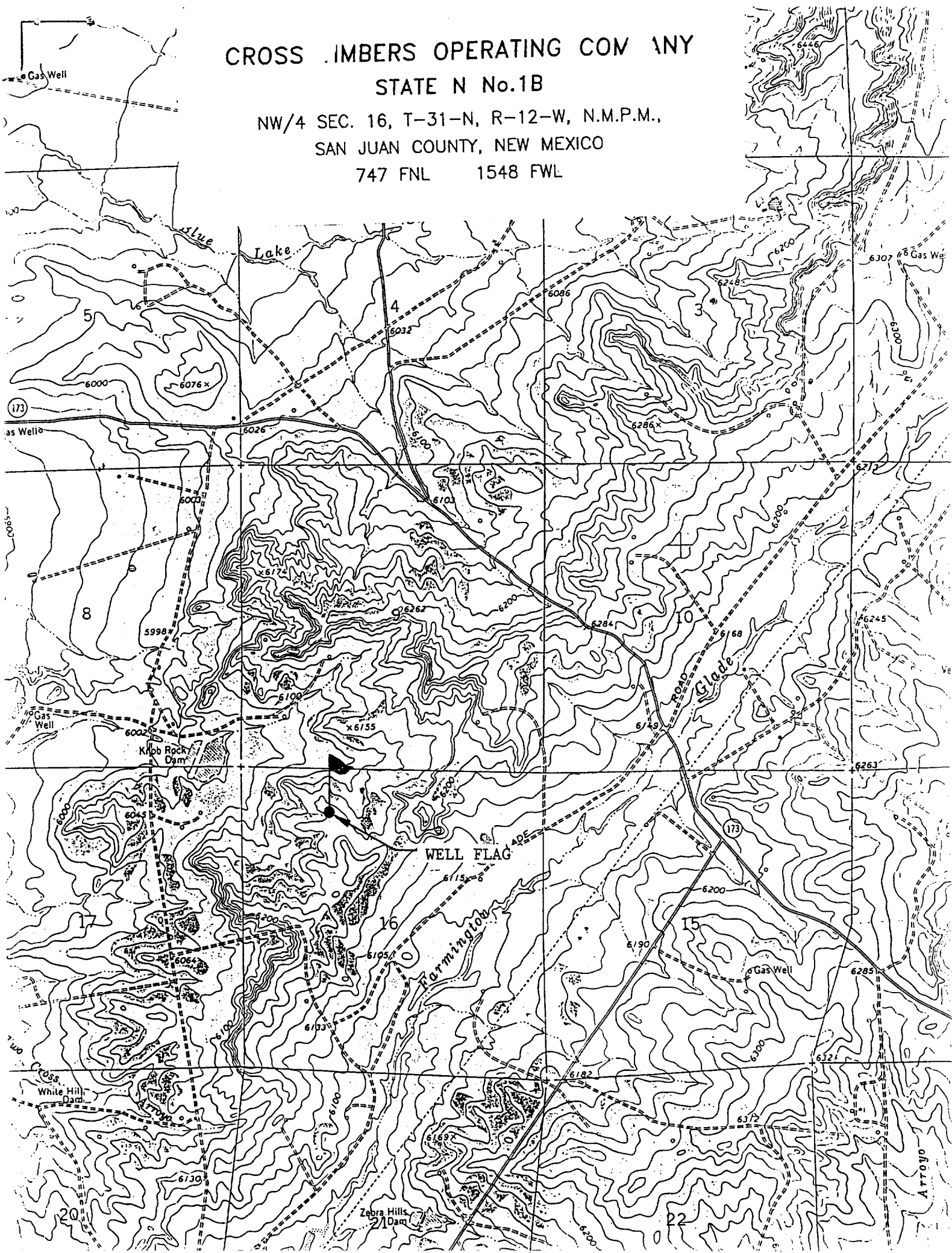
STATE N No.1B

NW/4 SEC. 16, T-31-N, R-12-W, N.M.P.M.,

SAN JUAN COUNTY, NEW MEXICO

747 FNL

1548 FWL



BOP SCHEMATIC FOR DRILLING OPERATIONS CLASS 1 NORMAL PRESSURE

TESTING PROCEDURE

1. Test BOP after installation:

Pressure test BOP to 200-300
psig (low pressure) for 5 min.

Test BOP to 1,500 psig (high
pressure) for 15 min.

2. Test operation of (both) rams on every trip.

3. Check and record Accumulator pressure on every tour.

4. Re-pressure test BOP stack after changing out rams.

