

UNITED STATES  
DEPARTMENT OF THE INTERIOR  
BUREAU OF LAND MANAGEMENT

APPLICATION FOR PERMIT TO DRILL, DEEPEN, OR PLUG BACK

1a. Type of Work DRILL	5. Lease Number SF-077648 Unit Reporting Number
1b. Type of Well GAS	6. If Indian, All. or Tribe
2. Operator <b>BURLINGTON RESOURCES</b> Oil & Gas Company	7. Unit Agreement Name
3. Address & Phone No. of Operator PO Box 4289, Farmington, NM 87401 (505) 326-9700	8. Farm or Lease Name Davis 9. Well Number #7F
4. Location of Well 180' FNL, 2465' FWL Latitude 36° 55.2'N, Longitude 108° 03.9'W	10. Field, Pool, Wildcat Basin Dakota 11. Sec., Twn, Rge, Mer. (NMPM) C Sec. 11, T-31-N, R-12-W API # 30-045-30437
14. Distance in Miles from Nearest Town 10 miles to P.O. in La Plata, NM	12. County San Juan 13. State NM
15. Distance from Proposed Location to Nearest Property or Lease Line 180'	17. Acres Assigned to Well W/305.4
16. Acres in Lease	
18. Distance from Proposed Location to Nearest Well, Drig, Compl, or Applied for on this Lease 2156'	
19. Proposed Depth 7444'	20. Rotary or Cable Tools Rotary
21. Elevations (DF, FT, GR, Etc.) 6259' GR	22. Approx. Date Work will Start
23. Proposed Casing and Cementing Program See Operations Plan attached	
24. Authorized by: <u>[Signature]</u> Regulatory/Compliance Supervisor	Date <u>11-20-00</u>

PERMIT NO. \_\_\_\_\_ APPROVAL DATE 7/6/01  
APPROVED BY /s/ Lee Ottent TITLE \_\_\_\_\_ DATE \_\_\_\_\_

Archaeological Report to be submitted

Threatened and Endangered Species Report to be submitted

NOTE: This format is issued in lieu of U.S. BLM Form 3160-3

Title 18 U.S.C. Section 1001, makes it a crime for any person knowingly and willfully to make to any department or agency of the United States any false, fictitious or fraudulent statements or presentations as to any matter within its jurisdiction.

NMOCB

DISTRICT I  
P.O. Box 1980, Hobbs, N.M. 88241-1980

DISTRICT II  
P.O. Drawer DD, Artesia, N.M. 88211-0719

DISTRICT III  
1000 Rio Brazos Rd., Aztec, N.M. 87410

DISTRICT IV  
PO Box 2088, Santa Fe, NM 87504-2088

State of New Mexico  
Energy, Minerals & Natural Resources Department

OIL CONSERVATION DIVISION

P.O. Box 2088  
Santa Fe, NM 87504-2088

Form C-102  
Revised February 21, 1994  
Instructions on back  
Submit to Appropriate District Office  
State Lease - 4 Copies  
Fee Lease - 3 Copies

☐ AMENDED REPORT

WELL LOCATION AND ACREAGE DEDICATION PLAT

<sup>1</sup> API Number 30-045-30437	<sup>2</sup> Pool Code 71599	<sup>3</sup> Pool Name Basin Dakota
<sup>4</sup> Property Code 18509	<sup>5</sup> Property Name DAVIS	<sup>6</sup> Well Number 7F
<sup>7</sup> OGRID No. 14538	<sup>8</sup> Operator Name BURLINGTON RESOURCES OIL & GAS INC.	<sup>9</sup> Elevation 6259'

<sup>10</sup> Surface Location

UL or lot no.	Section	Township	Range	Lot Idn	Feet from the	North/South line	Feet from the	East/West line	County
C	11	31-N	12-W		180	NORTH	2465	WEST	SAN JUAN

<sup>11</sup> Bottom Hole Location If Different From Surface

UL or lot no.	Section	Township	Range	Lot Idn	Feet from the	North/South line	Feet from the	East/West line	County
<sup>12</sup> Dedicated Acres W/305.4		<sup>13</sup> Joint or Infill		<sup>14</sup> Consolidation Code		<sup>15</sup> Order No. R-11532			

NO ALLOWABLE WILL BE ASSIGNED TO THIS COMPLETION UNTIL ALL INTERESTS HAVE BEEN CONSOLIDATED  
OR A NON-STANDARD UNIT HAS BEEN APPROVED BY THE DIVISION

16

S 89-29-35 E  
FD 3 1/2" BLM 1951 B.C. 2552.37' (M) 180'

LAT: 36°55.2' N.  
LONG: 108°03.9' W.

LOT 4 LOT 3 LOT 2 LOT 1

LOT 5 LOT 6 LOT 8

FD 3 1/2" BLM 1951 B.C. USA SF-077648

LOT 12 LOT 11 LOT 10 LOT 9

LOT 13 LOT 14 LOT 15 LOT 16

17 OPERATOR CERTIFICATION

I hereby certify that the information contained herein is true and complete to the best of my knowledge and belief

Signature: Peggy Cole

Printed Name: Peggy Cole

Title: Regulatory Supervisor

Date: 11-20-00

18 SURVEYOR CERTIFICATION

I hereby certify that the well location shown on this plat was plotted from field notes of actual surveys made by me or under my supervision, and that the same is true and correct to the best of my belief.

Date of Survey: 9-15-00

Signature and Seal of Professional Surveyor: ROY A. RUSH

Certificate Number: 8894

BURLINGTON RESOURCES OIL & GAS INC.

DAVIS #7F

NW/4 SEC.11, T-31-N, R-12-W, N.M.P.M.

SAN JUAN COUNTY, NEW MEXICO

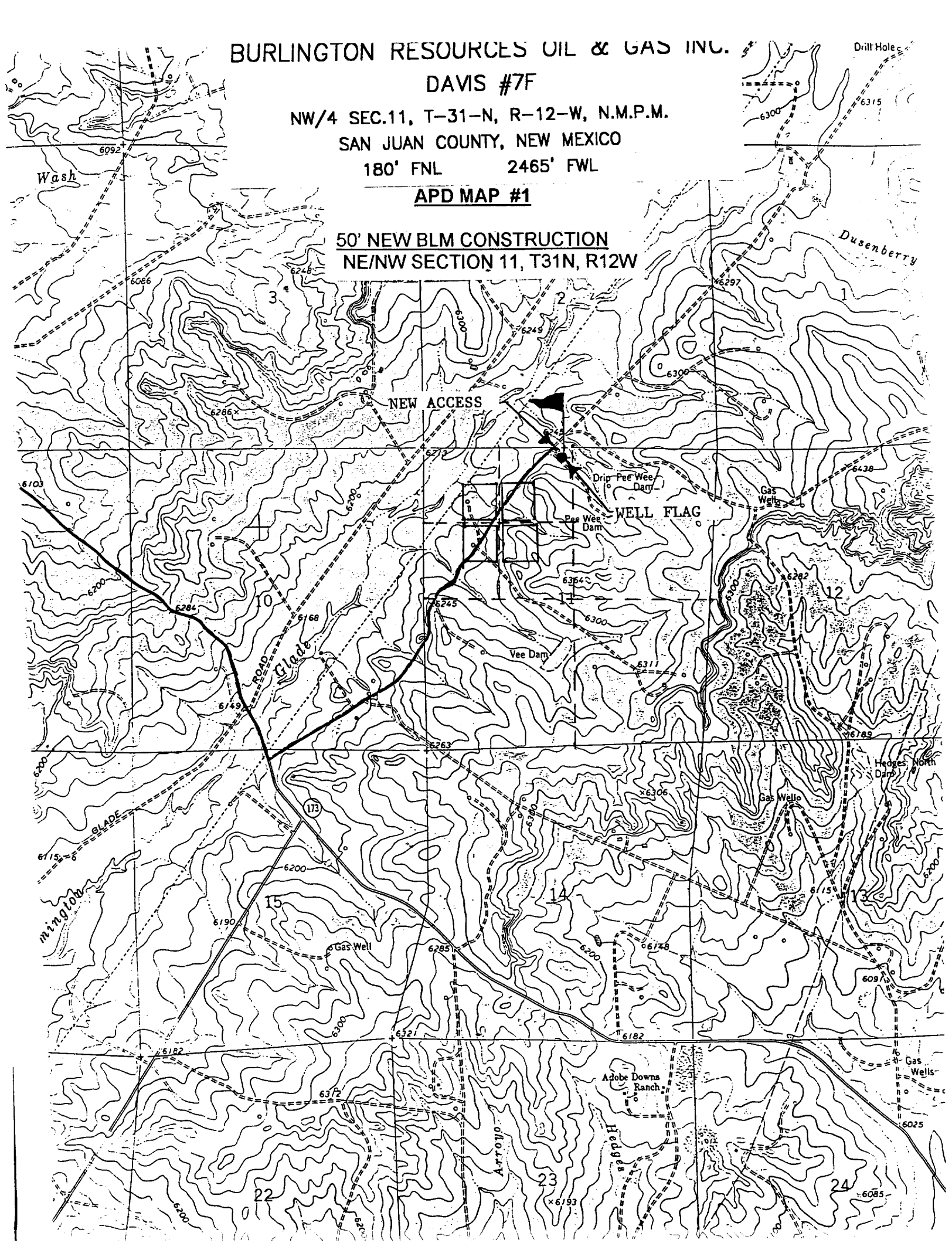
180' FNL

2465' FWL

APD MAP #1

50' NEW BLM CONSTRUCTION

NE/NW SECTION 11, T31N, R12W



## OPERATIONS PLAN

**Well Name:** Davis #7F  
**Location:** 180' FNL, 2465' FWL, Sec.11, T-31-N, R-12-W  
San Juan County, NM  
Latitude 36° 55.2'N, Longitude 108° 03.9'W  
**Formation:** Basin Dakota  
**Elevation:** 6259'GL

<u>Formation</u>	<u>Tops:</u>	<u>Top</u>	<u>Bottom</u>	<u>Contents</u>
Surface		San Jose	1125'	
Ojo Alamo		1125'	1184'	aquifer
Kirtland		1184'	2197'	gas
Fruitland		2197'	2802'	
Pictured Cliffs		2802'	2942'	gas
Lewis		2942'	3483'	gas
Mesaverde		3483'	3897'	gas
Chacra		3897'	4398'	gas
Massive Cliff House		4398'	4597'	gas
Menefee		4597'	5057'	gas
Massive Point Lookout		5057'	5495'	gas
Mancos Shale		5495'	7168'	gas
Greenhorn		7168'	7262'	gas
Dakota		7262'	7444'	gas
TD		7444'		

### Logging Program:

Open hole logs - none  
Cased hole logs - CBL/GR - TD to surface.  
Cores - none

### Mud Program:

<u>Interval</u>	<u>Type</u>	<u>Weight</u>	<u>Vis.</u>	<u>Fluid Loss</u>
0- 320'	Spud	8.4-8.9	40-50	no control
320-7444'	LSND	8.4-9.0	40-60	8-12

Pit levels will be visually monitored to detect gain or loss of fluid control.

### Casing Program:

<u>Hole Size</u>	<u>Depth Interval</u>	<u>Csg.Size</u>	<u>Wt.</u>	<u>Grade</u>
12 1/4"	0' - 320'	8 5/8"	24.0#	WC-50
7 7/8"	0' - 7444'	4 1/2"	10.5#	J-55

### Tubing Program:

0' - 7444'      2 3/8"      4.7#      J-55 EUE

### BOP Specifications, Wellhead and Tests:

#### Surface to TD -

11" 3000 psi minimum double gate BOP stack (Reference Figure #1).  
After nipple-up prior to drilling out surface casing, rams and casing will be tested to 600 psi for 30 minutes.

2" nominal, 3000 psi minimum choke manifold (Reference Figure #3).

**Completion Operations -**

6" 3000 psi double gate BOP stack (Reference Figure #2).  
After nipple-up prior to completion, pipe rams and casing top will be tested to 3000 psi for 15 minutes.

**Surface to Total Depth -**

2" nominal, 3000 psi minimum choke manifold (Reference Figure #3).

**Wellhead -**

8 5/8" x 4 1/2" x 2 3/8" x 3000 psi tree assembly.

**General -**

- Pipe rams will be actuated once each day and blind rams will be actuated once each trip to test proper functioning.
- An upper kelly cock valve with handle available and drill string valves to fit each drill string will be available on the rig floors at all times.
- A BOP pit level drill will be conducted weekly for each drilling crew.
- All of the BOP tests and drills will be recorded in the daily drilling reports.
- Blind and pipe rams will be equipped with extension hand wheels.

**Cementing:**

8 5/8" surface casing -

Cement to surface w/336 sx Class "G" cement w/3% calcium chloride and 1/4#/sx cellophane flakes (396 cu.ft. of slurry, 200% excess to circulate to surface.) WOC 8 hr prior to drilling out surface casing. Test casing to 600 psi for 30 minutes.

Saw tooth guide shoe on bottom. Bowspring centralizers will be run in accordance with Onshore Order #2.

Production Casing - 4 1/2"

4 1/2" production casing -

Lead w/812 sx Litecrete, 0.11% dispersant. Tail w/344 sx 50/50 Class "G" poz w/5% gel, 0.25 pps celloflakes, 5 pps gilsonite, 0.25% fluid loss, 0.15% dispersant, 0.1% retarder (2543 cu. ft. of slurry, 50% excess.)

Note: If open hole logs are run, cement volumes will be based on 25% excess over caliper volumes.

Float shoe on bottom. Three centralizers run every other joint above shoe. Thirty-five centralizers - one every 4th joint to the base of the Ojo Alamo @ 1184'. Two turbolizing type centralizers - one below and one into the base of the Ojo Alamo @ 1184'. Standard centralizers thereafter every fourth joint up to the base of the surface pipe.