

PO Box 1980, Hobbs, NM 88241-1980  
District II  
811 South First, Artesia, NM 88210  
District III  
1000 Rio Brazos Rd., Aztec, NM 87410  
District IV  
2040 South Pacheco, Santa Fe, NM 87505

STATE OF NEW MEXICO  
Energy, Minerals & Natural Resources Department

OIL CONSERVATION DIVISION  
2040 South Pacheco  
Santa Fe, NM 87505

Revised October 18, 1994  
Instructions on back  
Submit to Appropriate District Office  
State Lease - 6 Copies  
Fee Lease - 5 Copies

AMENDED REPORT

APPLICATION FOR PERMIT TO DRILL, RE-ENTER, DEEPEN, PLUGBACK, OR ADD A ZONE

<sup>1</sup> Operator Name and Address. <b>Burlington Resources Oil &amp; Gas Company</b> PO Box 4289, Farmington, NM 87499		<sup>2</sup> OGRID Number <b>14538</b>
<sup>4</sup> Property Code <b>7575</b>	<sup>5</sup> Property Name <b>Susco 16 State</b>	<sup>3</sup> API Number <b>30 - 045- 30452</b>
		<sup>6</sup> Well No. <b>1E</b>

<sup>7</sup> Surface Location

UL or lot no.	Section	Township	Range	Lot Idn	Feet from the	North/South line	Feet from the	East/West line	County
C	16	32N	8W		1270	North	1880	West	San Juan

<sup>8</sup> Proposed Bottom Hole Location If Different From Surface

UL or lot no.	Section	Township	Range	Lot Idn	Feet from the	North/South line	Feet from the	East/West line	County

<sup>9</sup> Proposed Pool 1 <b>Basin Dakota</b>	<sup>10</sup> Proposed Pool 2
---	-------------------------------

<sup>11</sup> Work Type Code N -	<sup>12</sup> Well Type Code G -	<sup>13</sup> Cable/Rotary Rotary	<sup>14</sup> Lease Type Code State -	<sup>15</sup> Ground Level Elevation 6728'
<sup>16</sup> Multiple N	<sup>17</sup> Proposed Depth 8550' -	<sup>18</sup> Formation Dakota	<sup>19</sup> Contractor N/a	<sup>20</sup> Spud Date N/a

<sup>21</sup> Proposed Casing and Cement Program

Hole Size	Casing Size	Casing weight/foot	Setting Depth	Sacks of Cement	Estimated TOC
12 1/4	9 5/8	32.3#	200'	188 cu.ft.	Surface
8 3/4	7	20#	3894'	1172 cu.ft.	Surface
6 1/4	4 1/2	10.5#	8550'	684 cu.ft.	3794'

<sup>22</sup> Describe the proposed program. If this application is to DEEPEN or PLUG BACK give the data on the present productive zone and proposed new productive zone. Describe the blowout prevention program, if any. Use additional sheets if necessary.

11" 2000 psi minimum double gate BOP

<sup>23</sup> I hereby certify that the information given above is true and complete to the best of my knowledge and belief. Signature: <i>Peggy Cole</i> Printed name: <b>Peggy Cole</b> Title: <b>Regulatory/Compliance Supervisor</b> Date: <b>12.15.00</b>		<b>OIL CONSERVATION DIVISION</b> Approved by: <i>[Signature]</i> Title: <b>SECURITY OIL &amp; GAS DEPARTMENT DIST. AS</b> Approval Date: <b>DEC 18 2000</b> Expiration Date: <b>DEC 18 2001</b> Conditions of Approval : Attached <input type="checkbox"/>	
--	--	---	--

DISTRICT I  
1825 N. French Dr., Hobbs, N.M. 88240

State of New Mexico  
Energy, Minerals & Natural Resources Department

Form C-102  
Revised August 15, 2000

DISTRICT II  
811 South First, Artesia, N.M. 88210

OIL CONSERVATION DIVISION  
2040 South Pacheco  
Santa Fe, NM 87505

Submit to Appropriate District Office  
State Lease - 4 Copies  
Fee Lease - 3 Copies

DISTRICT III  
1000 Rio Brazos Rd., Aztec, N.M. 87410

DISTRICT IV  
2040 South Pacheco, Santa Fe, NM 87505

☐ AMENDED REPORT

WELL LOCATION AND ACREAGE DEDICATION PLAT

<sup>1</sup> API Number 30-045-30452	<sup>2</sup> Pool Code 71599	<sup>3</sup> Pool Name Basin Dakota
<sup>4</sup> Property Code 7575	<sup>5</sup> Property Name SUSCO 16 STATE	<sup>6</sup> Well Number 1E
<sup>7</sup> GRID No. 14538	<sup>8</sup> Operator Name BURLINGTON RESOURCES OIL AND GAS, INC.	<sup>9</sup> Elevation 6728' —

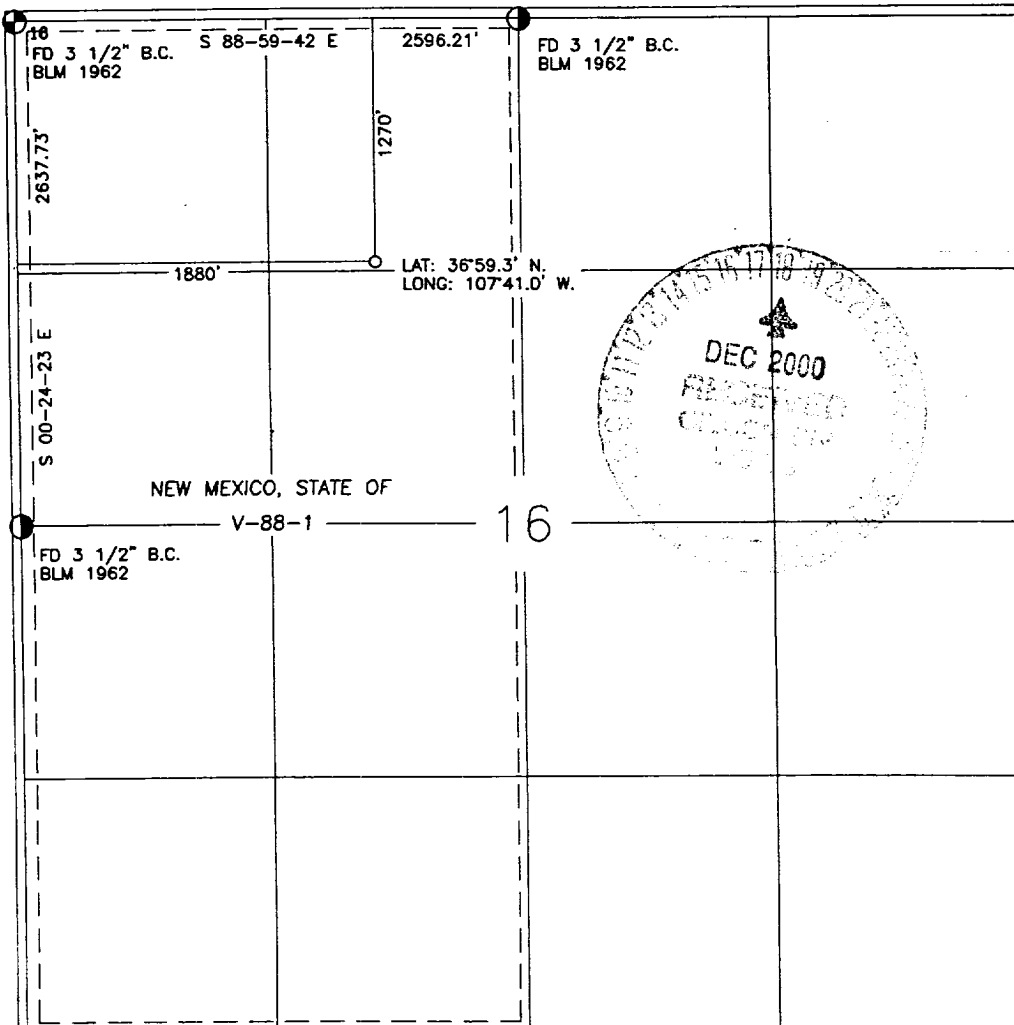
<sup>10</sup> Surface Location

UL or lot no.	Section	Township	Range	Lot Idn	Feet from the	North/South line	Feet from the	East/West line	County
C	16	32-N	8-W		1270'	NORTH	1880'	WEST	SAN JUAN

<sup>11</sup> Bottom Hole Location If Different From Surface

UL or lot no.	Section	Township	Range	Lot Idn	Feet from the	North/South line	Feet from the	East/West line	County
<sup>12</sup> Dedicated Acres W/320									

NO ALLOWABLE WILL BE ASSIGNED TO THIS COMPLETION UNTIL ALL INTERESTS HAVE BEEN CONSOLIDATED  
OR A NON-STANDARD UNIT HAS BEEN APPROVED BY THE DIVISION



17 OPERATOR CERTIFICATION

I hereby certify that the information contained herein is true and complete to the best of my knowledge and belief

*Peggy Cole*  
Signature  
Peggy Cole  
Printed Name  
Regulatory Supervisor  
Title  
12-12-00  
Date

18 SURVEYOR CERTIFICATION

I hereby certify that the well location shown on this plat was plotted from field notes of actual surveys made by me or under my supervision, and that the same is true and correct to the best of my belief.

11-9-00  
Date of Survey  
Signature and Seal of Professional Surveyor  
ROY A. RUSH  
REGISTERED PROFESSIONAL LAND SURVEYOR  
8894  
Certificate Number