

UNITED STATES
DEPARTMENT OF THE INTERIOR
BUREAU OF LAND MANAGEMENT

SUBMIT IN TRIPLICATE*
(Other instructions on
reverse side)

FORM APPROVED
OMB NO. 1004-0136
Expires: February 28, 1995

APPLICATION FOR PERMIT TO DRILL OR DEEPEN

1a. TYPE OF WORK

DRILL ☒

DEEPEN ☐

b. TYPE OF WELL

OIL
WELL ☐

GAS
WELL ☒

OTHER ☐

SINGLE
ZONE ☒

MULTIPLE
ZONE ☐

2. NAME OF OPERATOR

Cross Timbers Operating Company

3. ADDRESS AND TELEPHONE NO.

2700 Farmington Ave., Bldg. K. Ste 1 Farmington, NM 87401

4. LOCATION OF WELL (Report location clearly and in accordance with any State requirements)
At surface

200' FNL & 700' FEL Sec 3, T31N, R14W

691-FNL & 899-FEL Sec 3, T31N, R14W

14. DISTANCE IN MILES AND DIRECTION FROM NEAREST TOWN OR POST OFFICE*

Please see Attached Surface Use Program

15. DISTANCE FROM PROPOSED*

LOCATION TO NEAREST
PROPERTY OR LEASE LINE, FT.
(Also to nearest drlg. unit line, if any) 200'

18. DISTANCE FROM PROPOSED LOCATION*
TO NEAREST WELL, DRILLING, COMPLETED,
OR APPLIED FOR, ON THIS LEASE, FT. 2100'

16. NO. OF ACRES IN LEASE

19. PROPOSED DEPTH

3,200' TVD

17. NO. OF ACRES ASSIGNED
TO THIS WELL

NE/4 158.45 acres

20. ROTARY OR CABLE TOOLS

Rotary

21. ELEVATIONS (Show whether DF, RT, GR, etc.)

5,979' GL

22. APPROX. DATE WORK WILL START*

Winter 2001

23. PROPOSED CASING AND CEMENTING PROGRAM

SIZE OF HOLE	GRADE SIZE OF CASING	WEIGHT PER FOOT	SETTING DEPTH	QUANTITY OF CEMENT
12-1/4"	8-5/8" J-55	24.0#	350'	220 sx Type III
7-7/8"	4-1/2" J-55	10.5#	3,235' MD	615 sx 50/50 Poz, Type III cmt

SEE ATTACHED
CONDITIONS OF APPROVAL

Venting / Flaring approved for 90 days
per NTL-4A

Set 8-5/8", 24.0#, J-55 STC surface csg @ 350'. Cmt w/approx 220 sx Type III cmt w/additives.
Attempt to circ cmt to surface.

Install & test BOP equipment as required. Drill 7-7/8" hole to approx 1,000'. PU directional
drilling tools and drill to the target @ 500' FNL & 800 FEL. Build and maintain a 10.5 deg angle
to bottom.

Set 4-1/2", 10.5#, J-55, STC production csg @ 3,200' TVD. Cmt w/approx 615 sx 50/50 Poz. Type III cmt w/additives. Final cmt volumes will be obtained fr/caliper log + 30% excess hold attempt to circ cmt to surface.

Approval of this agreement does not
warrant or certify that the operator
holds legal or equitable title
to those rights in the subject lease
which are committed hereto...

IN ABOVE SPACE DESCRIBE PROPOSED PROGRAM: If proposal is to deepen, give data on present productive zone and proposed new productive zone. If proposal is to drill or
deepen directionally, give pertinent data on subsurface locations and measured and true vertical depths. Give blowout prev. inter program, if any.

24.

SIGNED

TITLE Drilling Engineer

DATE 10/2/00

(This space for Federal or State office use)

PERMIT NO.

APPROVAL DATE

APPROVED FOR A PERIOD
NOT TO EXCEED 1 YEAR

Application approval does not warrant or certify that the applicant holds legal or equitable title to those rights in the subject lease which would entitle the applicant to conduct operations.

CONDITIONS OF APPROVAL, IF ANY:

JOHN L. PECOR

ACTING

MINERALS STAFF CHIEF

JAN 17 2001

APPROVED BY

TITLE

DATE

*See Instructions On Reverse Side

Title 18 U.S.C. Section 1001, makes it a crime for any person knowingly and willfully to make to any department or agency of the United States any false, fictitious or fraudulent statements or representations as to any matter within its jurisdiction.

District I
PO Box 1980, Hobbs, NM 88241-1980

District II
PO Drawer 00, Artesia, NM 88211-0719

District III
1000 Rio Brazos Rd., Aztec, NM 87410

District IV
PO Box 2088, Santa Fe, NM 87504-2088

State of New Mexico
Energy, Minerals & Natural Resources Department

OIL CONSERVATION DIVISION
PO Box 2088
Santa Fe, NM 87504-2088

Form C-102

Revised February 21, 1994

Instructions on back

Submit to Appropriate District Office

State Lease - 4 Copies

Fee Lease - 3 Copies

☐ AMENDED REPORT

REVISED
WELL LOCATION AND ACREAGE DEDICATION PLAT

*API Number 30045-30490	*Pool Code 86720	*Pool Name UTE DOME DAKOTA
*Property Code 22645	*Property Name UTE INDIANS A	*Well Number 33
*GRID No. 167067	*Operator Name CROSS TIMBERS OPERATING COMPANY	*Elevation 5979'

10 Surface Location

UL or lot no.	Section	Township	Range	Lot Idn	Feet from the	North/South line	Feet from the	East/West line	County
A	3	31N	14W		200	NORTH	700	EAST	SAN JUAN

11 Bottom Hole Location If Different From Surface

UL or lot no.	Section	Township	Range	Lot Idn	Feet from the	North/South line	Feet from the	East/West line	County
A	3	31N	14W		632 641	NORTH	844 849	EAST	SAN JUAN

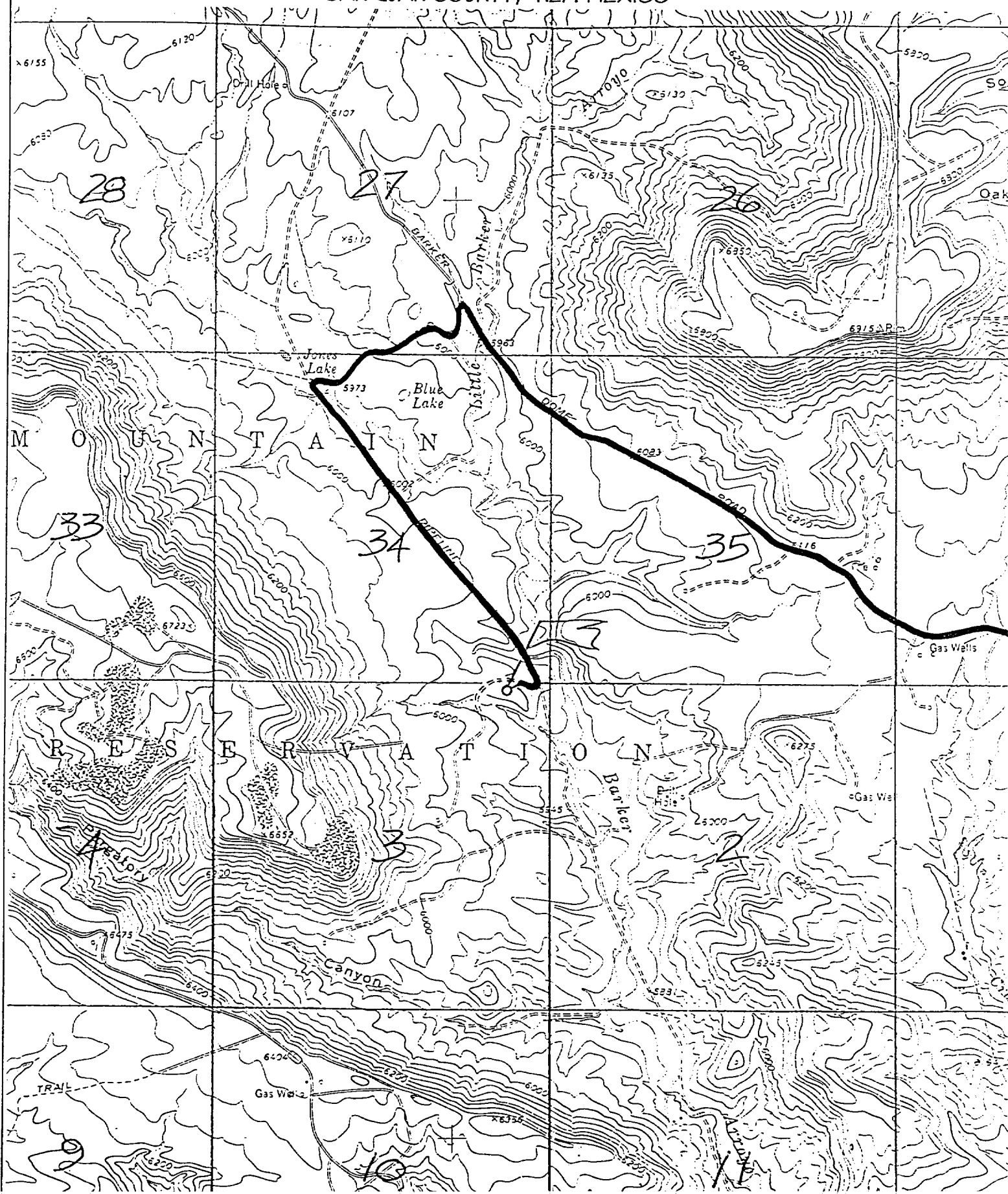
12 Dedicated Acres 168.75 NE 1/4	13 Joint or Infill	14 Consolidation Code	15 Order No.
---	---------------------------	------------------------------	---------------------

NO ALLOWABLE WILL BE ASSIGNED TO THIS COMPLETION UNTIL ALL INTERESTS HAVE BEEN CONSOLIDATED OR A NON-STANDARD UNIT HAS BEEN APPROVED BY THE DIVISION

16 Diagram showing Lot 1, Lot 2, Lot 3, and Lot 4. Dimensions: 5280.00', 1323.96', 1320.00', 2640.00', 5282.64'. A well location is marked with dimensions 200' and 700' from the bottom hole. A large '3' is in the center of the lot grid.	17 OPERATOR CERTIFICATION I hereby certify that the information contained herein is true and complete to the best of my knowledge and belief. Signature <u>Jeff Patton</u> Printed Name <u>Jeff Patton</u> Title <u>Production Engineer</u> Date <u>12/7/00</u>
	18 SURVEYOR CERTIFICATION I hereby certify that the well location shown on this plat was plotted from field notes of actual surveys made by me or under my supervision, and that the same is true and correct to the best of my belief. REVISED: DECEMBER 6, 2000 AUGUST 23, 2000 Date of Survey Signature and Seal of Registered Professional Surveyor Certificate <u>6857</u>

CROSS TIMBERS OPERATING COMPANY UTE INDIANS A #33

200' FNL & 700' FEL, SECTION 3, T31N, R14W, N.M.P.M.
SAN JUAN COUNTY, NEW MEXICO





Cross Timbers Operating Company

BOP SCHEMATIC FOR DRILLING OPERATIONS CLASS 1 (2M) NORMAL PRESSURE

TESTING PROCEDURE

1. Test BOP after installation:

Pressure test BOP to 200-300
psig (low pressure) for 5 min.

Test BOP to Working Press or
to 70% internal yield of surf csg
(10 min).

2. Test operation of (both) rams
on every trip.

3. Check and record Accumulator
pressure on every tour.

4. Re-pressure test BOP stack after
changing out rams.

5. Have kelly cock valve with handle available.

6. Have safety valve and subs to fit all sizes of
drill string.

ROTATING HEAD
(OPTIONAL)

FILL UP LINE

FLOW LINE
TO PIT

BLIND
RAMS

PIPE
RAMS

KILL LINE
2" dia min.

TO CHOKE
MANIFOLD
2" dia min.

See Choke Manifold drawing for
specifications

HCR VALVE (OPTIONAL)

2" (MIN) FULL OPENING
VALVE

MUD CROSS

** Remove check or ball
from check valve and
press test to same press
as BOP's. **

