

District I  
PO Box 1980, Hobbs, NM 88241-1980  
District II  
811 S. 1st Street, Artesia, NM 88210-2834  
District III  
1000 Rio Brazos Rd., Aztec, NM 87410  
District IV  
2040 South Pacheco, Santa Fe, NM 87505

State of New Mexico  
Energy, Minerals & Natural Resources Department

OIL CONSERVATION DIVISION  
2040 South Pacheco  
Santa Fe, NM 87505

Form C-101  
Revised October 18, 1999  
Instructions on back  
Submit to Appropriate District Office  
State Lease - 6 Copies  
Fee Lease - 5 Copies

☐ AMENDED REPORT

APPLICATION FOR PERMIT TO DRILL, RE-ENTER, DEEPEN, PLUGBACK, OR ADD A ZONE

<sup>1</sup> Operator name and Address Cross Timbers Operating Company 2700 Farmington Ave., Bldg. K. Ste 1 Farmington, NM 87401		<sup>2</sup> OGRID Number 167067
<sup>4</sup> Property Code 27432	<sup>5</sup> Property Name Oliver Unit	<sup>3</sup> API Number 30-0 45-30546
		<sup>6</sup> Well No. #1

<sup>7</sup> Surface Location									
UL or lot no.	Section	Township	Range	Lot. Idn	Feet from the	North/South Line	Feet from the	East/West line	County
J	35	31N	12W		1,975'	South	1,530'	East	San Juan

<sup>8</sup> Proposed Bottom Hole Location If Different From Surface									
UL or lot no.	Section	Township	Range	Lot. Idn	Feet from the	North/South Line	Feet from the	East/West line	County

<sup>9</sup> Proposed Pool 1 Aztec Pictured Cliffs	<sup>10</sup> Proposed Pool 2
---	-------------------------------

<sup>11</sup> Work Type Code N -	<sup>12</sup> Well Type Code G -	<sup>13</sup> Cable/Rotary R	<sup>14</sup> Lease Type Code P -	<sup>15</sup> Ground Level Elevation 5838' -
<sup>16</sup> Multiple N	<sup>17</sup> Proposed Depth 2550' -	<sup>18</sup> Formation Pictured Cliffs	<sup>19</sup> Contractor Wayne Smith Drlg	<sup>20</sup> Spud Date Before 7/01

<sup>21</sup> Proposed Casing and Cement Program

Hole Size	Casing Size	Casing weight/foot	Setting Depth	Sacks of Cement	Estimated TOC
8-3/4"	7"	20#, J-55, STC	200'	100	Surface
6-1/4"	4-1/2"	10.5#, J-55, STC	2,550' -	225	Surface

<sup>22</sup> Describe the proposed program. If this application is to DEEPEN or PLUG BACK give the data on the present productive zone and proposed new productive zone. Describe the blowout prevention program, if any. Use additional sheets if necessary.

Surface Casing Cement Program. Approx 100 sx class "B" cmt w/2% CaCl<sub>2</sub> & 1/4#/sx celloflake (15.6 ppg, 1.18 cu ft). Circ cmt to surface.

Production Casing Cement Program. Approx 225 sx Premium Lite HS (65% cmt, 35% poz, 6% gel, 10#/sx CSE) cmt or equivalent w/2% CaCl<sub>2</sub> & 1/4#/sx celloflake (12.5 ppg, 2.07 cu ft). Exact cmt volume will be calculated from open hole caliper log plus 30%.

See enclosed diagram for BOP program.

<sup>23</sup> I hereby certify that the information given above is true and complete to the best of my knowledge and belief.

Signature:

Printed name: Jeffrey W. Patton

Title: Drilling Engineer

OIL CONSERVATION DIVISION

Approved by:

Title:

Approval Date:

Expiration Date:

FEB - 5 2001

FEB - 5 2002

DISTRICT I  
1825 N. French Dr., Hobbs, N.M. 88240

State of New Mexico  
Energy, Minerals & Natural Resources Department

Form C-102  
Revised August 15, 2000

DISTRICT II  
811 South First, Artesia, N.M. 88210

DISTRICT III  
1000 Rio Brazos Rd., Aztec, N.M. 87410

DISTRICT IV  
2040 South Pacheco, Santa Fe, NM 87505

OIL CONSERVATION DIVISION

2040 South Pacheco  
Santa Fe, NM 87505

REC'D / SAN JUAN

Submit to Appropriate District Office  
State Lease - 4 Copies  
Fee Lease - 3 Copies

JAN 17 2001

☐ AMENDED REPORT

WELL LOCATION AND ACREAGE DEDICATION PLAT

*API Number 30-045-30546	*Pool Code 71280	*Pool Name AZTEC PICTURED CLIFFS
*Property Code 27432	*Property Name OLIVER UNIT	*Well Number 1
*OGMD No. 167067	*Operator Name CROSS TIMBERS OPERATING CO.	*Elevation 5838'

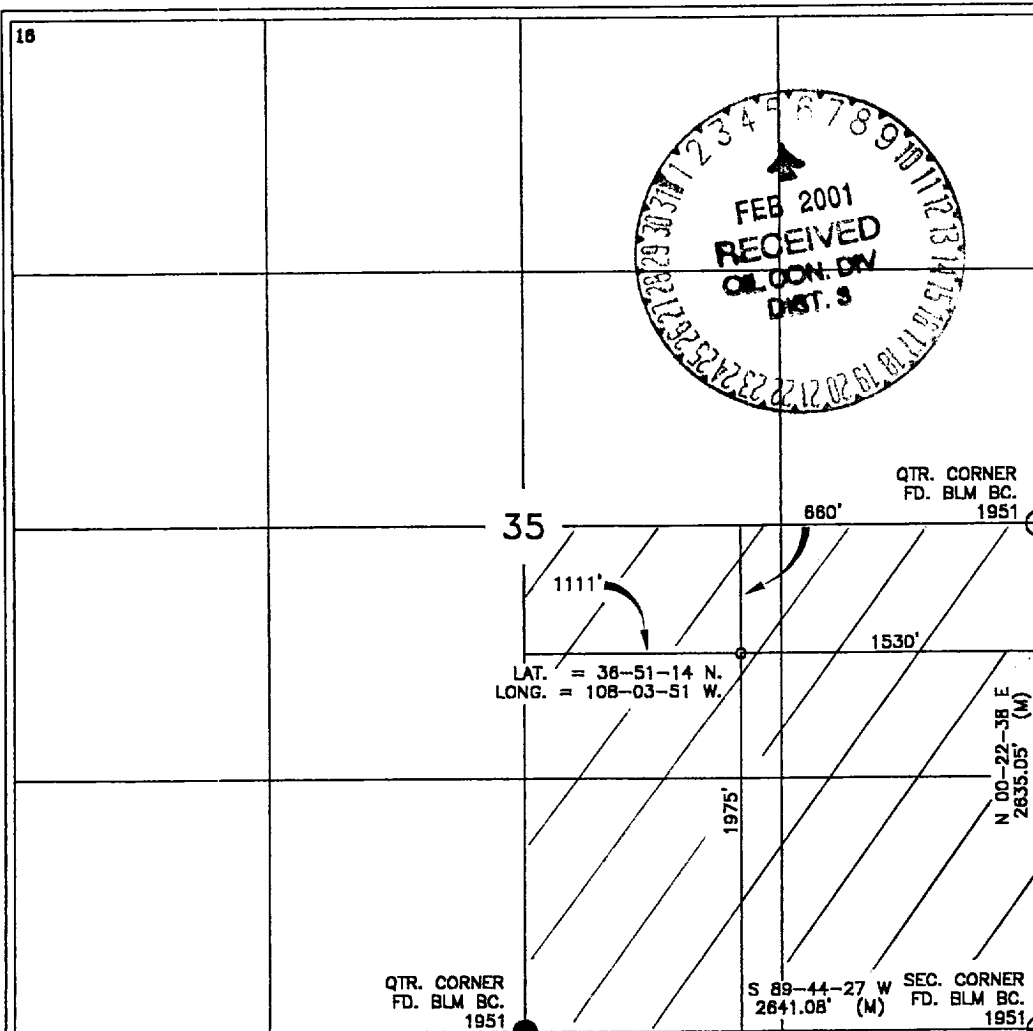
10 Surface Location

UL or lot no.	Section	Township	Range	Lot Idn	Feet from the	North/South line	Feet from the	East/West line	County
5	35	31-N	12-W		1975	SOUTH	1530	EAST	SAN JUAN

11 Bottom Hole Location If Different From Surface

UL or lot no.	Section	Township	Range	Lot Idn	Feet from the	North/South line	Feet from the	East/West line	County
Dedicated Acres 160.00 SE / 4			Joint or Infill		Consolidation Code		Order No.		

NO ALLOWABLE WILL BE ASSIGNED TO THIS COMPLETION UNTIL ALL INTERESTS HAVE BEEN CONSOLIDATED  
OR A NON-STANDARD UNIT HAS BEEN APPROVED BY THE DIVISION



17 OPERATOR CERTIFICATION

I hereby certify that the information contained herein  
is true and complete to the best of my knowledge and  
belief.

Signature

JEFFREY W. PATTON

Printed Name

DRILLING ENGINEER

Title

Date 1/17/01

Date

18 SURVEYOR CERTIFICATION

I hereby certify that the well location shown on this plat  
was plotted from field notes of actual surveys made by  
me or under my supervision and that the same is true  
and correct to the best of my belief.

Date of Survey

Signature and Seal of Professional Surveyor

8894

Certificate Number

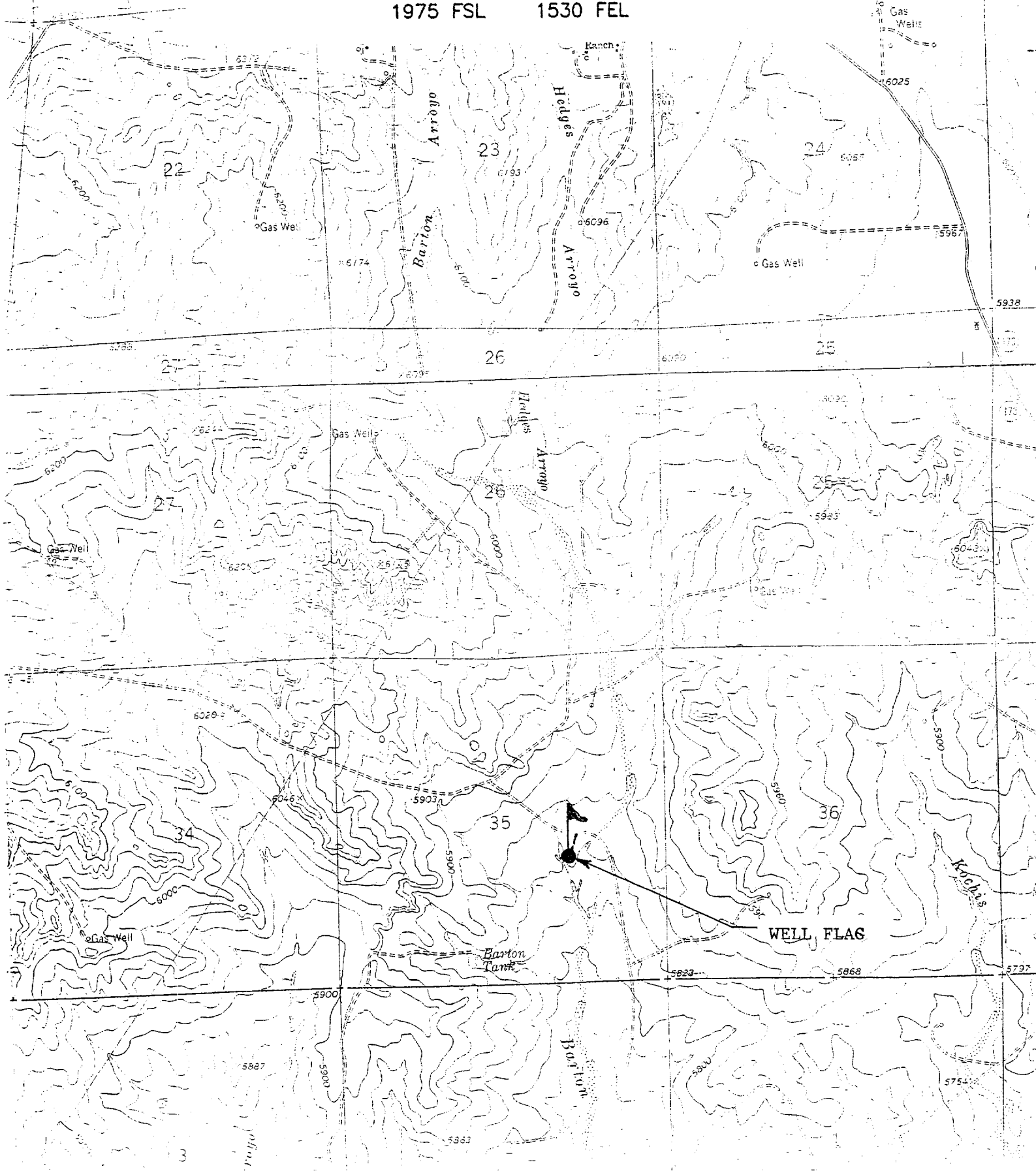
# CROSS TIMBERS OPERATING COMPANY

## OLIVER UNIT #1

SE/4 SEC. 35, T-31-N, R-12-W, N.M.P.M.,

SAN JUAN COUNTY, NEW MEXICO

1975 FSL 1530 FEL





**Cross Timbers Operating Company**

# **BOP SCHEMATIC FOR DRILLING OPERATIONS CLASS 1 (2M) NORMAL PRESSURE**

## **TESTING PROCEDURE**

1. Test BOP after installation:

Pressure test BOP to 200-300  
psig (low pressure) for 5 min.

Test BOP to Working Press or  
to 70% internal yield of surf csg  
(10 min).

2. Test operation of (both) rams  
on every trip.

3. Check and record Accumulator  
pressure on every tour.

4. Re-pressure test BOP stack after  
changing out rams.

5. Have kelly cock valve with handle available.

6. Have safety valve and subs to fit all sizes of  
drill string.

