

DISTRICT I  
1625 N. French Dr., Hobbs, NM 88240  
DISTRICT II  
811 South Frist, Artesia, NM 88210  
DISTRICT III  
1000 Rio Brazos Rd., Aztec, NM 87410  
DISTRICT IV  
2040 South Pacheco, Santa Fe, NM 87505

State of New Mexico  
Energy, Minerals and Natural Resources

OIL CONSERVATION DIVISION

2040 South Pacheco  
Santa Fe, NM 87505

Form C-10  
Revised March 25, 1999  
Instructions on back  
Submit to Appropriate District Office  
State Lease - 6 Copie  
Fee Lease - 5 Copie  
☐ AMENDED REPORT

APPLICATION FOR PERMIT TO DRILL, RE-ENTER, DEEPEN, PLUGBACK, OR ADD A ZONE

|   |  |  |  |                                     |  |
|---|--|--|--|-------------------------------------|--|
| <sup>1</sup> Operator Name and Address<br>Four Star Oil and Gas Co.<br>3300 N. Butler Ave, Ste100 Farmington NM 87401 |  |  |  | <sup>2</sup> OGRID Number<br>131994 |  |
| <sup>4</sup> Property Code<br>17721   |  | <sup>5</sup> Property Name<br>NEW MEXICO COM M |  |                                     | <sup>3</sup> API Number<br>30045-30555 |
| <sup>6</sup> Well No.<br>1A   |  |  |  |                                     |  |

| <sup>7</sup> Surface Location |         |          |       |         |               |                  |               |                |          |
|-------------------------------|---------|----------|-------|---------|---------------|------------------|---------------|----------------|----------|
| UI or lot no                  | Section | Township | Range | Lot.Idn | Feet From The | North/South Line | Feet From The | East/West Line | County   |
| F                             | 36      | 31N      | 12W   |         | 1975          | NORTH            | 1980          | WEST           | SAN JUAN |

| <sup>8</sup> Proposed Bottom Hole Location If Different From Surface |         |          |       |         |                               |                  |               |                |        |
|--|---------|----------|-------|---------|-------------------------------|------------------|---------------|----------------|--------|
| UI or lot no   | Section | Township | Range | Lot.Idn | Feet From The                 | North/South Line | Feet From The | East/West Line | County |
| <sup>9</sup> Proposed Pool 1<br>MESA VERDE                           |         |          |       |         | <sup>10</sup> Proposed Pool 2 |                  |               |                |        |

|                                   |                                       |                                   |                                      |   |
|-----------------------------------|---------------------------------------|-----------------------------------|--------------------------------------|---|
| <sup>11</sup> Work Type Code<br>N | <sup>12</sup> WellType Code<br>G      | <sup>13</sup> Rotary or C.T.<br>R | <sup>14</sup> Lease Type Code<br>S   | <sup>15</sup> Ground Level Elevation<br>5938' |
| <sup>16</sup> Multiple<br>N       | <sup>17</sup> Proposed Depth<br>4900' | <sup>18</sup> Formation<br>MV     | <sup>19</sup> Contractor<br>BEAR CAT | <sup>20</sup> Spud Date<br>5/15/01            |

| <sup>21</sup> Proposed Casing and Cement Program |                |                 |               |                 |          |
|--|----------------|-----------------|---------------|-----------------|----------|
| SIZE OF HOLE                                     | SIZE OF CASING | WEIGHT PER FOOT | SETTING DEPTH | SACKS OF CEMENT | EST. TOP |
| 12-1/4"  | 8-5/8" K-55    | 24#             | 350'          | 260             | SURFACE  |
| 7-7/8"   | 4-1/2" J-55    | 11.6#           | 4900'         | 550             | SURFACE  |
|  |                |                 |               |                 |          |
|  |                |                 |               |                 |          |

<sup>22</sup> Describe the proposed program. If this application is to DEEPEN or PLUG BACK give the data on the present productive zone and proposed new productive zone. Describe the blowout prevention program, if any. Use additional sheets if necessary.

Four Star Oil and Gas Company proposes to drill this development well to a depth of 4900'. This well will test the productivity of the MESA VERDE formation. If the well is unproductive, it will be plugged and abandoned as per state requirements.  
Bond coverage for this well is provided by Bond NO. K02907914-C4073 nation wide BLM bond & Bond No. K02907914-F4072-Nation wide BIA bond.  
A threatened and endangered species survey and archaeological survey were performed as required

<sup>23</sup> I hereby certify that the rules and regulations of the Oil Conservation Division have been complied with and that the information given above is true and complete to the best of my knowledge and belief.

Signature Arthur D. Archibegue

Printed Name Arthur D. Archibegue

Title Eng. Assistant

Date 2/6/01

Telephone 325-4397

OIL CONSERVATION DIVISION

Approved By: [Signature]

Title:

DEPUTY OIL & GAS INSPECTOR, DIST. 00

Approval Date

FEB - 8 2001

Expiration Date:

FEB - 8 2002

Conditions of Approval:

Attached

District I  
PO Box 1980, Hobbs, NM 88241-1980

District II  
PO Drawer DD, Artesia, NM 88211-0719

District III  
1000 Rio Brazos Rd., Aztec, NM 87410

District IV  
PO Box 2088, Santa Fe, NM 87504-2088

State of New Mexico  
Energy, Minerals & Natural Resources Department

OIL CONSERVATION DIVISION  
PO Box 2088  
Santa Fe, NM 87504-2088

Form C-102  
Revised February 21, 1994  
Instructions on back  
Submit to Appropriate District Office  
State Lease - 4 Copies  
Fee Lease - 3 Copies

☐ AMENDED REPORT

WELL LOCATION AND ACREAGE DEDICATION PLAT

|                                     |  |   |  |  |                             |
|-------------------------------------|--|---|--|--|-----------------------------|
| 1 API Number<br><b>30-045-30555</b> |  | 2 Pool Code<br><b>72319</b>                               |  | 3 Pool Name<br><b>BLANCO MESAVERDE</b> |                             |
| 4 Property Code<br><b>17721</b>     |  | 5 Property Name<br><b>NEW MEXICO COM M</b>                |  |  | 6 Well Number<br><b>1A</b>  |
| 7 GRID No.<br><b>131994</b>         |  | 8 Operator Name<br><b>FOUR STAR OIL &amp; GAS COMPANY</b> |  |  | 9 Elevation<br><b>5938'</b> |

10 Surface Location

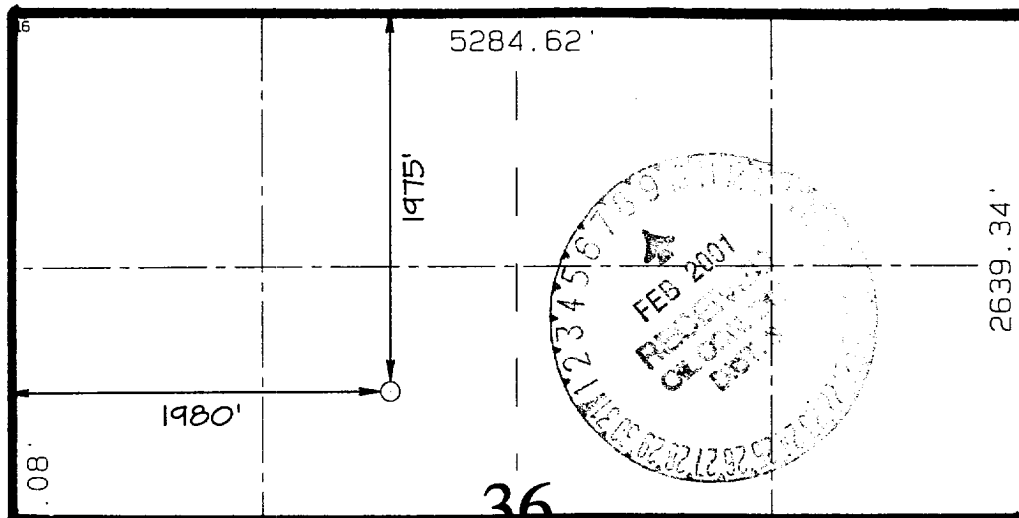
| UL or lot no. | Section | Township | Range | Lot Idn | Feet from the | North/South line | Feet from the | East/West line | County   |
|---------------|---------|----------|-------|---------|---------------|------------------|---------------|----------------|----------|
| F             | 36      | 31N      | 12W   |         | 1975          | NORTH            | 1980          | WEST           | SAN JUAN |

11 Bottom Hole Location If Different From Surface

| UL or lot no. | Section | Township | Range | Lot Idn | Feet from the | North/South line | Feet from the | East/West line | County |
|---------------|---------|----------|-------|---------|---------------|------------------|---------------|----------------|--------|
|               |         |          |       |         |               |                  |               |                |        |

|                                     |                                |                       |              |
|-------------------------------------|--------------------------------|-----------------------|--------------|
| 12 Dedicated Acres<br><b>320 W2</b> | 13 Joint or Infill<br><b>I</b> | 14 Consolidation Code | 15 Order No. |
|-------------------------------------|--------------------------------|-----------------------|--------------|

NO ALLOWABLE WILL BE ASSIGNED TO THIS COMPLETION UNTIL ALL INTERESTS HAVE BEEN CONSOLIDATED  
OR A NON-STANDARD UNIT HAS BEEN APPROVED BY THE DIVISION



17 OPERATOR CERTIFICATION

I hereby certify that the information contained herein is true and complete to the best of my knowledge and belief

Arthur D. Archibez  
Signature

Arthur D. Archibez  
Printed Name

Engineer Assistant  
Title

2/5/01  
Date

18 SURVEYOR CERTIFICATION

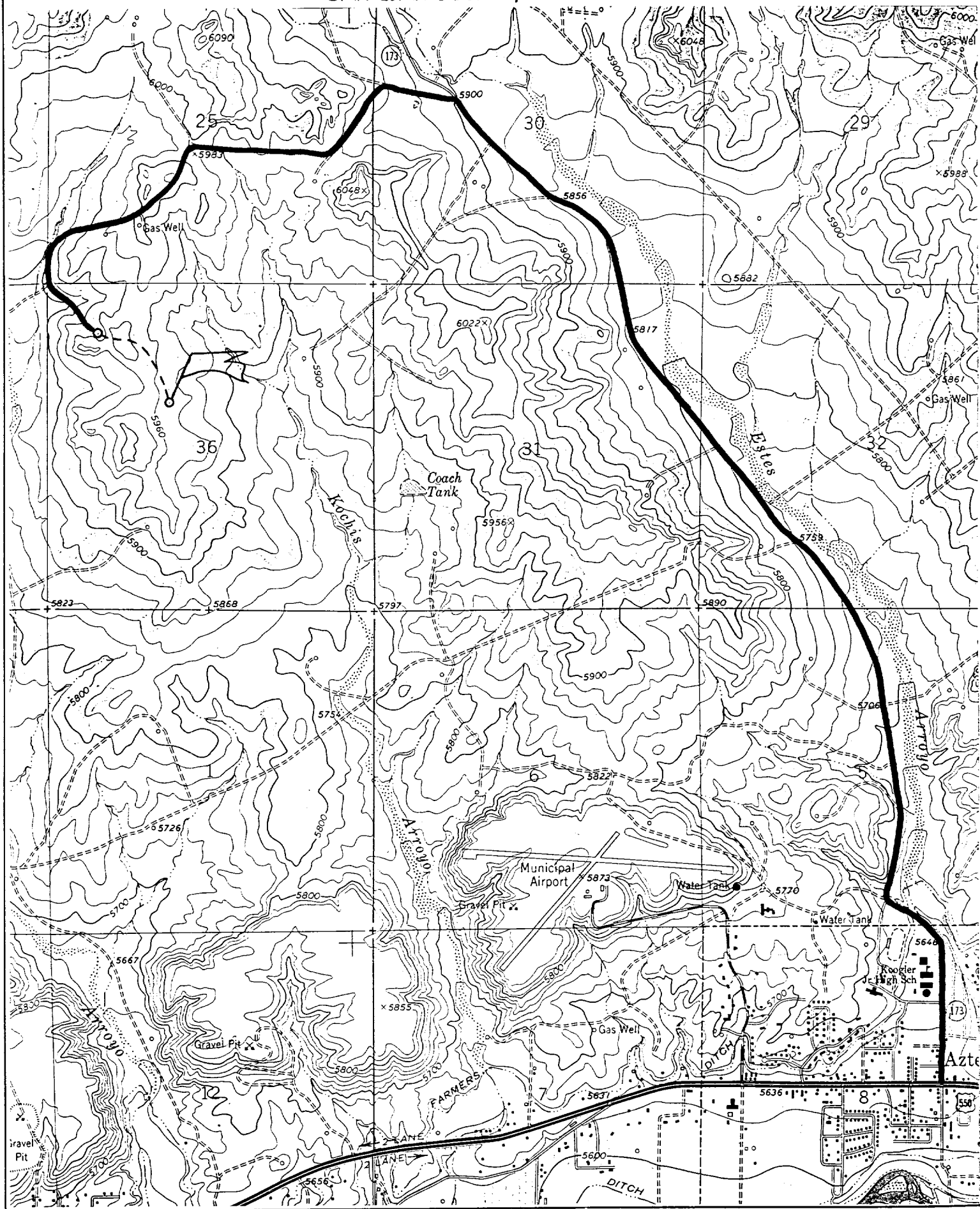
I hereby certify that the well location shown on this plat was plotted from field notes of actual surveys made by me or under my supervision, and that the same is true and correct to the best of my belief.

FEBRUARY 2, 2001

Date of Survey  
Signature and Seal of Professional Surveyor

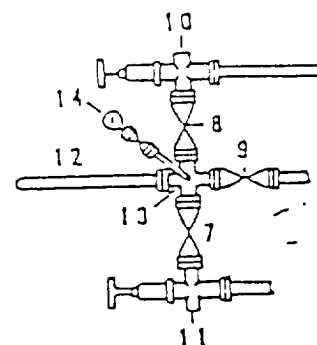
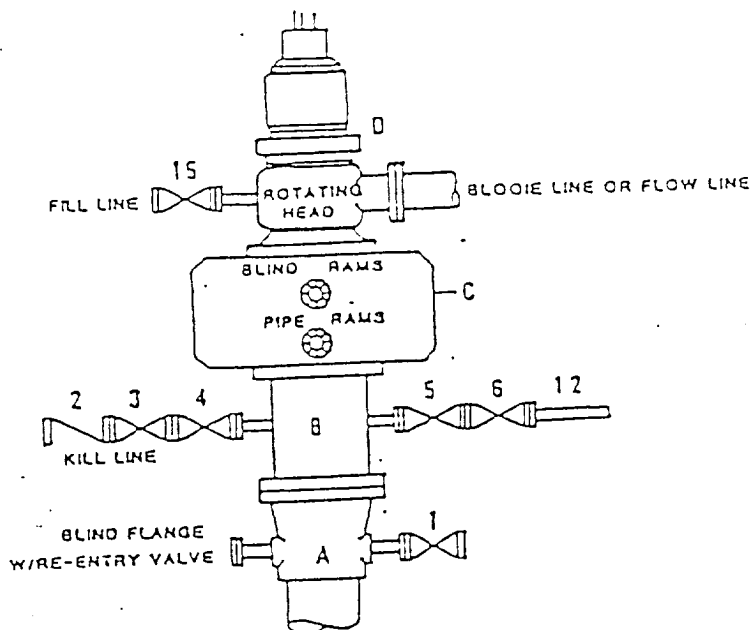
NEALE C. EDWARDS  
6857  
Certificate Number 6857

1975' FNL & 1980' FWL, SECTION 36, T31N, R12W, N.M.P.M.  
SAN JUAN COUNTY, NEW MEXICO



DRILLING CONTROL  
CONDITION II-B 3000 WP  
FOR AIR DRILLING OR  
WHERE NITROGEN OR AIR BLOWS ARE EXPECTED

H<sub>2</sub>S TRIM REQUIRED  
YES \_\_\_\_\_ NO \_\_\_\_\_



DRILLING CONTROL

MATERIAL LIST - CONDITION II - B

- |                |   |
|----------------|---|
| A              | Texaco Wellhead   |
| B              | 3000# W.P. drilling spool with a 2" minimum flanged outlet for kill line and 3" minimum flanged outlet for choke line.  |
| C              | 3000# W.P. Dual ram type preventer, hydraulic operated with 1" steel, 3000# W.P. control lines (where sub-structure height is adequate, 2 - 3000# W.P. single ram type preventers may be utilized). |
| D              | Rotating Head with fill up outlet and extended Bloode Line.   |
| 1, 3, 4, 7, 8, | 2" minimum 3000# W.P. flanged full opening steel gate valve, or Halliburton Lo Torc Plug valve.   |
| 2              | 2" minimum 3000# W.P. back pressure valve.  |
| 5, 6, 9        | 3" minimum 3000# W.P. flanged full opening steel gate valve, or Halliburton Lo Torc Plug valve.   |
| 12             | 3" minimum schedule 80, Grade "B", seamless line pipe.  |
| 13             | 2" minimum x 3" minimum 3000# W.P. flanged cross.   |
| 10, 11         | 2" minimum 3000# W.P. adjustable choke bodies.  |
| 14             | Cameron Mud Gauge or equivalent (location optional in choke line).  |
| 15             | 2" minimum 3000# W.P. flanged or threaded full opening steel gate valve, or Halliburton Lo Torc Plug valve.   |