

District I
PO Box 1980, Hobbs, NM 88241-1980
District II
811 South First, Artesia, NM 88210
District III
1000 Rio Brazos Rd., Aztec, NM 87410
District IV
2040 South Pacheco, Santa Fe, NM 87505

State of New Mexico
Energy, Minerals & Natural Resources Department

OIL CONSERVATION DIVISION
2040 South Pacheco
Santa Fe, NM 87505

Form C-101
Revised October 18, 1994
Instructions on back
Submit to Appropriate District Office
State Lease - 6 Copies
Fee Lease - 5 Copies

AMENDED REPORT

APPLICATION FOR PERMIT TO DRILL, RE-ENTER, DEEPEN, PLUG BACK, OR ADD A ZONE

¹ Operator Name and Address. Burlington Resources Oil & Gas Company PO Box 4289, Farmington, NM 87499		² OGRID Number 14538
³ API Number 30 - 045 - 3656		
⁴ Property Code 7554	⁵ Property Name Stull	⁶ Well No. 2

⁷ Surface Location

UL or lot no.	Section	Township	Range	Lot Idn	Feet from the	North/South line	Feet from the	East/West line	County
L	10	32	10		1630	South	1070	West	San Juan

⁸ Proposed Bottom Hole Location If Different From Surface

UL or lot no.	Section	Township	Range	Lot Idn	Feet from the	North/South line	Feet from the	East/West line	County
⁹ Proposed Pool 1 Basin Dakota					¹⁰ Proposed Pool 2				

¹¹ Work Type Code N -	¹² Well Type Code G -	¹³ Cable/Rotary Rotary	¹⁴ Lease Type Code Fee -	¹⁵ Ground Level Elevation 6136' GR
¹⁶ Multiple N	¹⁷ Proposed Depth 7690' -	¹⁸ Formation Dakota	¹⁹ Contractor N/a	²⁰ Spud Date N/a

²¹ Proposed Casing and Cement Program

Hole Size	Casing Size	Casing weight/foot	Setting Depth	Sacks of Cement	Estimated TOC
12 1/4	8 5/8	24.0#	320'	396 cu.ft.	Surface -
7 7/8	4 1/2	10.5#	7690' -	2452 cu.ft.	Surface -

²² Describe the proposed program. If this application is to DEEPEN or PLUG BACK give the data on the present productive zone and proposed new productive zone. Describe the blowout prevention program, if any. Use additional sheets if necessary.

Mud drill
11" 3000 psi minimum double gate BOP

²³ I hereby certify that the information given above is true and complete to the best of my knowledge and belief. Signature: <i>Peggy Cole</i>		OIL CONSERVATION DIVISION	
Printed name: Peggy Cole		Approved by: <i>[Signature]</i>	
Title: Regulatory/Compliance Supervisor		Title: DEPUTY OIL & GAS INSPECTOR, DIST. 3	
Date: 2-21-01		Approval Date: FEB 22 2001	Expiration Date: FEB 22 2002
Phone: 505-326-9700		Conditions of Approval: Attached <input type="checkbox"/>	

DISTRICT I
1625 N. French Dr., Hobbs, N.M. 88240

DISTRICT II
811 South First, Artesia, N.M. 88210

DISTRICT III
1000 Elc Brasos Rd., Aztec, N.M. 87410

DISTRICT IV
2040 South Pacheco, Santa Fe, NM 87505

State of New Mexico
Energy, Minerals & Natural Resources Department

Form C-102
Revised August 15, 2000

Submit to Appropriate District Office
State Lease - 4 Copies
Fee Lease - 3 Copies

OIL CONSERVATION DIVISION
2040 South Pacheco
Santa Fe, NM 87505

☐ AMENDED REPORT

WELL LOCATION AND ACREAGE DEDICATION PLAT

¹ API Number 30-045- 30561	² Pool Code 71599 -	³ Pool Name Basin Dakota -
⁴ Property Code 7554	⁵ Property Name STULL	⁶ Well Number 2
⁷ OGED No. 14538	⁸ Operator Name BURLINGTON RESOURCES OIL & GAS, INC.	⁹ Elevation 6136' -

¹⁰ Surface Location

UL or lot no.	Section	Township	Range	Lot Idn	Feet from the	North/South line	Feet from the	East/West line	County
L	10	32-N	10-W		1630	SOUTH	1070	WEST	SAN JUAN

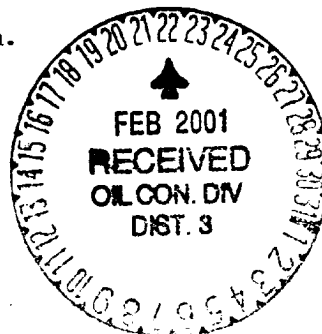
¹¹ Bottom Hole Location If Different From Surface

UL or lot no.	Section	Township	Range	Lot Idn	Feet from the	North/South line	Feet from the	East/West line	County
¹² Dedicated Acres 339.83		¹³ Joint or Infill		¹⁴ Consolidation Code		¹⁵ Order No.			
SP									

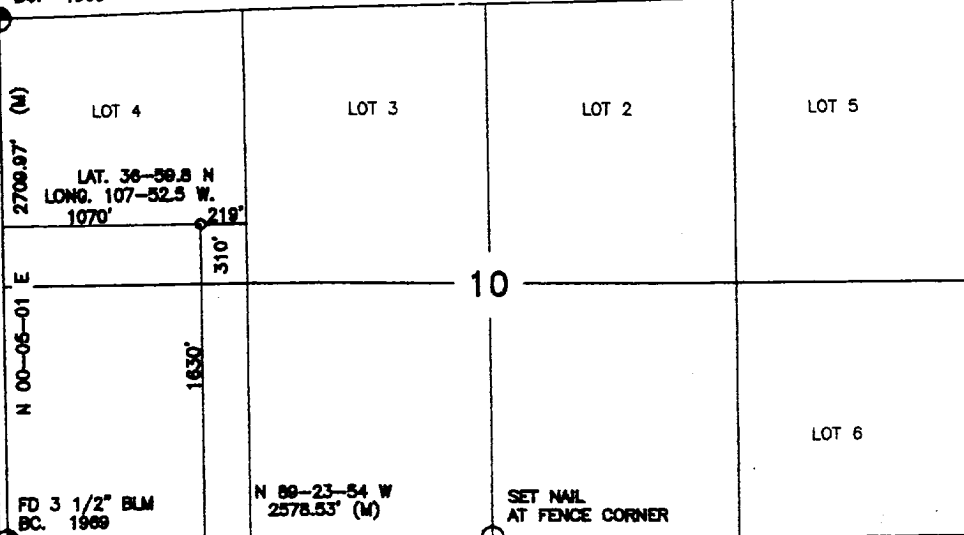
NO ALLOWABLE WILL BE ASSIGNED TO THIS COMPLETION UNTIL ALL INTERESTS HAVE BEEN CONSOLIDATED
OR A NON-STANDARD UNIT HAS BEEN APPROVED BY THE DIVISION

16

Reissued to show moved location.



FD 3 1/2" BLM
BC. 1989



17 OPERATOR CERTIFICATION

I hereby certify that the information contained herein is true and complete to the best of my knowledge and belief.

Peggy Cole
Signature

Peggy Cole

Printed Name

Regulatory Supervisor
Title

2-21-01
Date

18 SURVEYOR CERTIFICATION

I hereby certify that the well location shown on this plat was plotted from field notes of actual surveys made by me or under my supervision, and that the same is true and correct to the best of my knowledge and belief.

1-17-01
Date of Survey
Signature and Seal of Registered Surveyor
8894
Certificate Number