

**UNITED STATES  
DEPARTMENT OF THE INTERIOR  
BUREAU OF LAND MANAGEMENT**

5. LEASE DESIGNATION AND SERIAL NO.

SF- 078772

6. IF INDIAN, ALLOTTEE OR TRIBE NAME

**APPLICATION FOR PERMIT TO DRILL, DEEPEN, OR PLUG BACK**

1a. TYPE OF WORK

DRILL ☒

DEEPEN ☐

1b. TYPE OF WELL

OIL ☐  
WELL

GAS ☒  
WELL

OTHER ☐

SINGLE ☒  
ZONE

MULTIPLE ☐  
ZONE

7. UNIT AGREEMENT NAME

Rosa Unit

8. FARM OR LEASE NAME, WELL NO.

151B

2. NAME OF OPERATOR

Williams Production Company

3. ADDRESS OF OPERATOR

c/o Walsh Engineering 7415 E. Main St., Farmington, NM 87402 (505) 327-4892

4. LOCATION OF WELL (Report location clearly and in accordance with any State requirements \*)

At Surface 1275' FNL and 565' FWL

At proposed Prod. Zone

9. API WELL NO.

30-045-30691

10. FIELD AND POOL OR WILDCAT

Blanco Mesa Verde

11. SEC., T., R., M., OR BLK.  
AND SURVEY OR AREA

D Sec. 33, T32N, R6W

14. DISTANCE IN MILES AND DIRECTION FROM NEAREST TOWN OR POST OFFICE\*

25 miles NE of Blanco, NM

12. COUNTY OR PARISH

San Juan

13. STATE

NM

15. DISTANCE FROM PROPOSED\* LOCATION TO NEAREST PROPERTY  
OR LEASE LINE, FT. (Also to nearest drlg. unit line, if any)

565'

16. NO. OF ACRES IN LEASE

1920.00

17. NO. OF ACRES ASSIGNED TO THIS WELL

320

18. DISTANCE FROM PROPOSED LOCATION\* TO NEAREST WELL,  
DRILLING, COMPLETED, OR APPLIED FOR ON THIS LEASE, FT.

2600'

19. PROPOSED DEPTH

6108'

20. ROTARY OR CABLE TOOLS

Rotary

21. ELEVATIONS (Show whether DF, RT, GR, etc.)

6456'

This action is subject to technical  
procedural review pursuant to 43 CFR 3165.3  
and appeal pursuant to 43 CFR 3165.4.

22. APPROX. DATE WORK WILL START\*

August 1, 2001

**23. PROPOSED CASING AND CEMENTING PROGRAM**

SIZE OF HOLE	SIZE OF CASING	WEIGHT/FOOT	SETTING DEPTH	QUANTITY OF CEMENT
12-1/4"	9-5/8"	36#	+/- 500'	~352 cu.ft. Cl "H" with 2% CaCl <sub>2</sub>
8-3/4"	7"	20#	+/- 3648'	~859 cu.ft. 65/35 poz & ~237 cu.ft. 50/50
6-1/4"	4-1/2"	10.5#	+/- 3548' - 6108'	~116 cu.ft. 50/50 poz & ~263 cu.ft. 50/50

Williams Production Company proposes to drill a vertical well to develop the Mesa Verde formation at the above described location in accordance with the attached drilling and surface use plans.

This location has been archaeologically surveyed by Independent Contract Archaeology. Copies of their report have been submitted directly to your office.

This APD also is serving as an application to obtain BLM road and pipeline right-of-ways. This well will be accessed by an existing road that crosses the NW/NW of section 33, SE/NE, SW/NE, SW/SW, NE/NW, NW/NW of section 32, SW/SW of section 29, SE/SE, NE/SE, SE/NW & NW/NW of section 30 all of T32N R6W, and NE/NE of section 25 of T32N R7W where it joins San Juan County Road #4020.

IN ABOVE SPACE DESCRIBE PROPOSED PROGRAM : If proposal is to deepen or plug back, give data on present productive zone and proposed new productive zone. If proposal is to drill or deepen directionally, give pertinent data on subsurface locations and measured and true vertical depths. Give blowout preventer program, if any.

24.

SIGNED

TITLE John C. Thompson, Agent

DATE

6/6/01

(This space for Federal or State office use)

PERMIT NO.

APPROVAL DATE

2/22/02

Application approval does not warrant or certify that the applicant holds legal or equitable title to those rights in the subject lease which would entitle the applicant to conduct operations thereon.

CONDITIONS OF APPROVAL, IF ANY:

APPROVED BY

TITLE

DATE

**\*See Instructions On Reverse Side**

Title 18 U.S.C. Section 1001, makes it a crime for any person knowingly and willfully to make to any department or agency of the United States any false, fictitious or fraudulent statements or representations as to any matter within its jurisdiction.

District I  
PO Box 1980, Hobbs, NM 88241-1980

District II  
PO Drawer DD, Artesia, NM 88211-0719

District III  
1000 Rio Brazos Rd., Aztec, NM 87410

District IV  
PO Box 2088, Santa Fe, NM 87504-2088

State of New Mexico  
Energy, Minerals & Natural Resources Department

OIL CONSERVATION DIVISION  
PO Box 2088  
Santa Fe, NM 87504-2088

Form C-102  
Revised February 21, 1994

Instructions on back  
Submit to Appropriate District Office  
State Lease - 4 Copies  
Fee Lease - 3 Copies

☐ AMENDED REPORT

2001 JUN -6 PM 3:36

WELL LOCATION AND ACREAGE DEDICATION PLAT

*API Number <b>30045-30691</b>		*Pool Code <b>72319</b>	*Pool Name <b>Blanco Mesaverde</b>
*Property Code <b>17033</b>	*Property Name <b>ROSA UNIT</b>		*Well Number <b>151B</b>
*GRID No. <b>120782</b>	*Operator Name <b>WILLIAMS PRODUCTION COMPANY</b>		*Elevation <b>6456'</b>

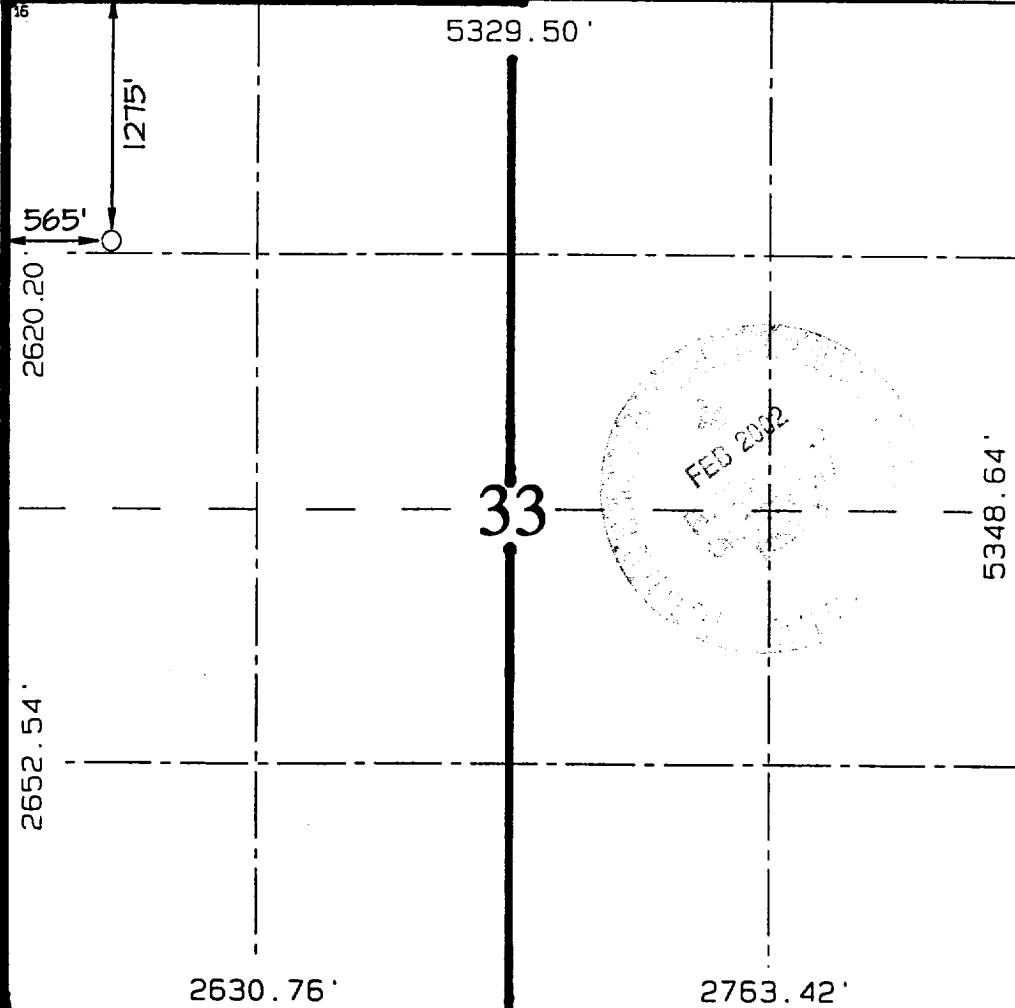
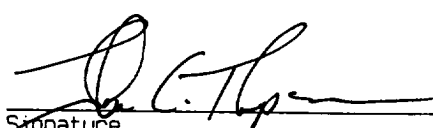

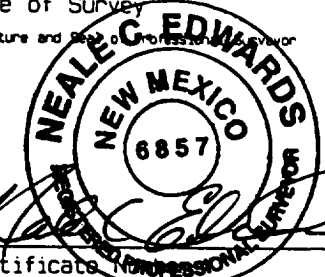
<sup>10</sup> Surface Location

UL or lot no. <b>D</b>	Section <b>33</b>	Township <b>32N</b>	Range <b>6W</b>	Lot Idn	Feet from the <b>1275</b>	North/South line <b>NORTH</b>	Feet from the <b>565</b>	East/West line <b>WEST</b>	County <b>SAN JUAN</b>
---------------------------	----------------------	------------------------	--------------------	---------	------------------------------	----------------------------------	-----------------------------	-------------------------------	---------------------------

<sup>11</sup> Bottom Hole Location If Different From Surface

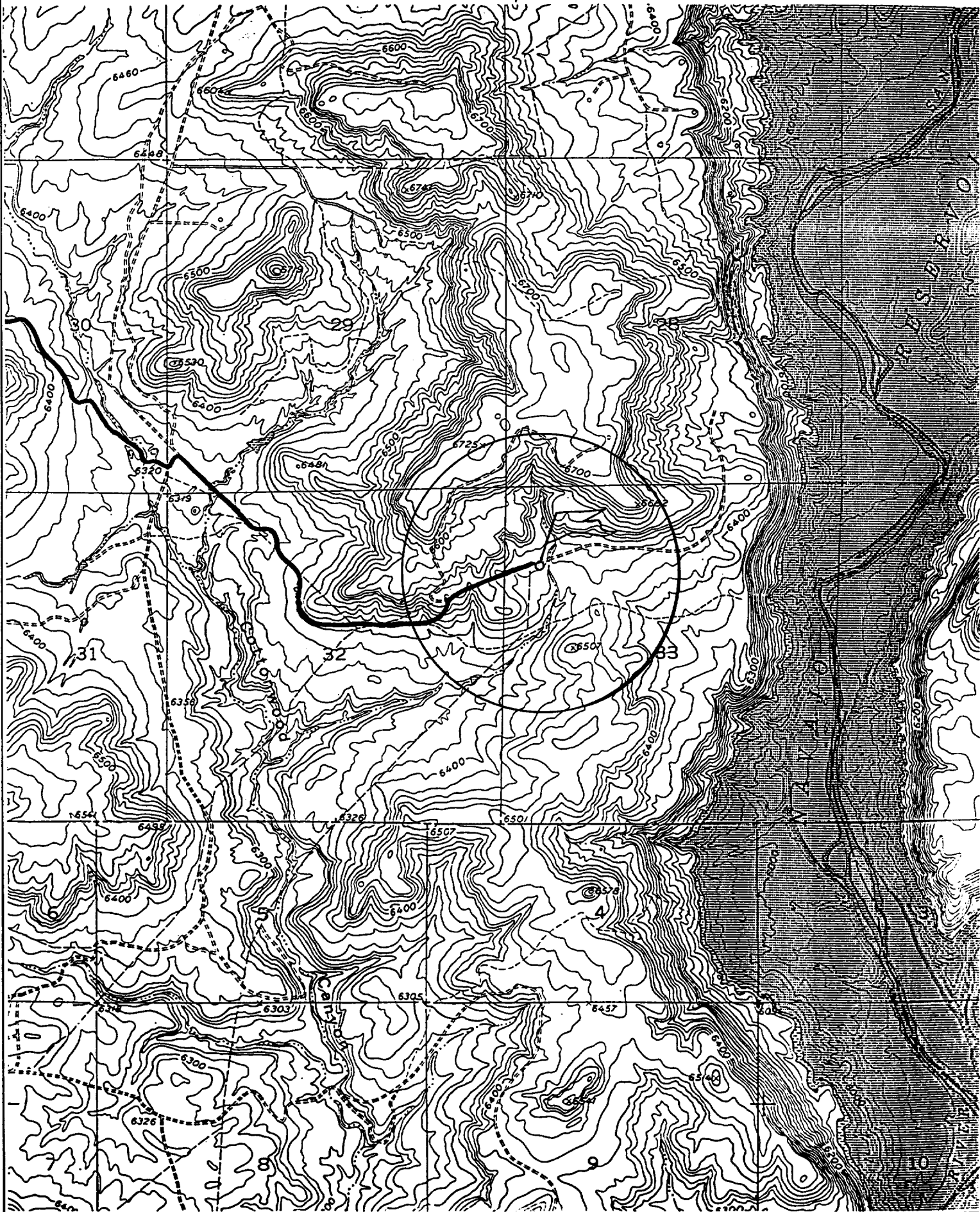
UL or lot no.	Section	Township	Range	Lot Idn	Feet from the	North/South line	Feet from the	East/West line	County
<sup>12</sup> Dedicated Acres <b>320 - W/2</b>		<sup>13</sup> Joint or Infill <b>I</b>		<sup>14</sup> Consolidation Code <b>U</b>		<sup>15</sup> Order No.			

NO ALLOWABLE WILL BE ASSIGNED TO THIS COMPLETION UNTIL ALL INTERESTS HAVE BEEN CONSOLIDATED  
OR A NON-STANDARD UNIT HAS BEEN APPROVED BY THE DIVISION

	<p><sup>17</sup> OPERATOR CERTIFICATION</p> <p>I hereby certify that the information contained herein is true and complete to the best of my knowledge and belief.</p> <p> Signature</p> <p><b>John Thompson</b> Printed Name</p> <p><b>Agent, Walsh Engineering</b> Title</p> <p><b>May 30, 2001</b> Date</p>
	<p><sup>18</sup> SURVEYOR CERTIFICATION</p> <p>I hereby certify that the well location shown on this plat was plotted from field notes of actual surveys made by me or under my supervision, and that the same is true and correct to the best of my belief.</p> <p><b>DECEMBER 23, 2000</b> Date of Survey</p> <p> Signature and Seal of Professional Surveyor</p> <p> Certificate <b>6857</b></p>

WILLIAMS PRODUCTION COMPANY ROSA UNIT #151B

1275' FNL & 565' FWL, SECTION 33, T32N, R6W, N.M.P.M.  
SAN JUAN COUNTY, NEW MEXICO





## **WILLIAMS PRODUCTION COMPANY**

### **Operations Plan**

*(Note: This procedure will be adjusted on site based upon actual conditions)*

<b><u>DATE:</u></b>	6/6/2001	<b><u>FIELD:</u></b>	Blanco MV
<b><u>WELL NAME:</u></b>	Rosa Unit #151B	<b><u>SURFACE:</u></b>	BLM
<b><u>LOCATION:</u></b>	NW/4 NW/4 Sec 33-32N-6W San Juan, NM	<b><u>MINERALS:</u></b>	Federal
<b><u>ELEVATION:</u></b>	6456' GR	<b><u>LEASE #</u></b>	SF-078772
<b><u>MEASURED DEPTH:</u></b>	6108'		

#### **I. GEOLOGY:** Surface formation - San Jose

##### **A. FORMATION TOPS:** ( KB)

	<b><u>MD</u></b>		<b><u>MD</u></b>
Ojo Alamo	2338'	Cliff House	5398'
Kirtland	2468'	Menefee	5443'
Fruitland	2958'	Point Lookout	5658'
Pictured Cliffs	3173'	Mancos	5958'
Lewis	3488'	Total Depth	6108'

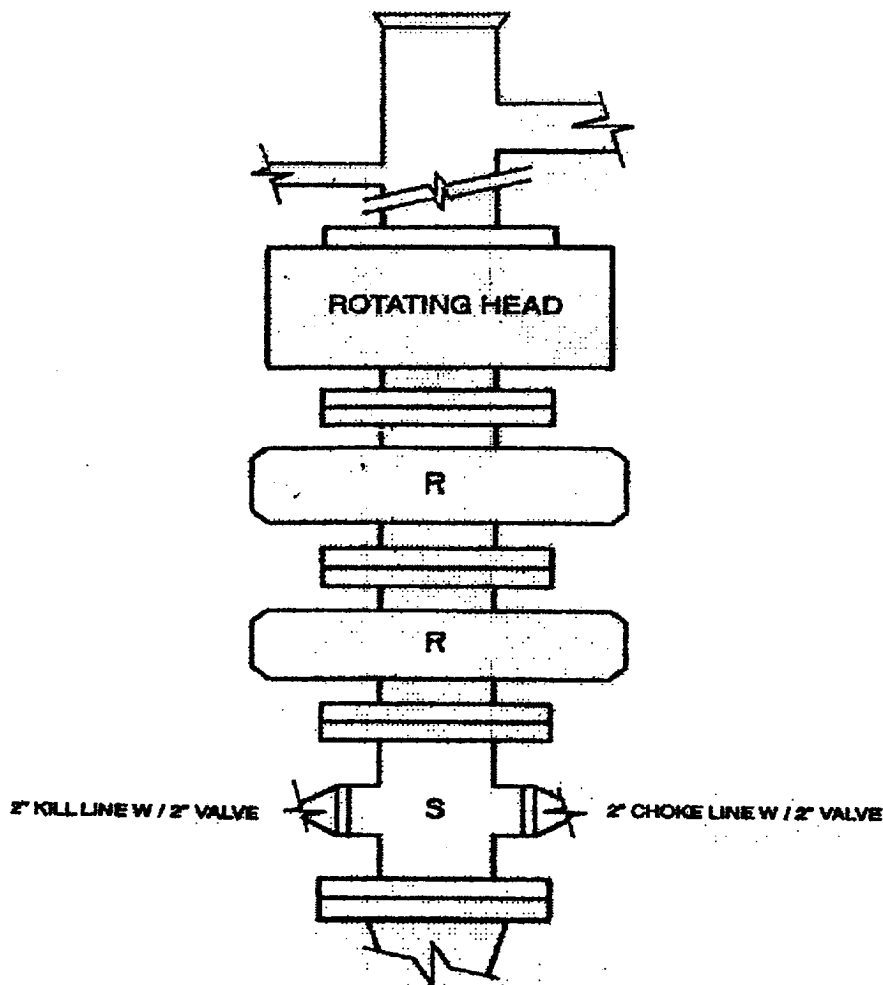
##### **B. LOGGING PROGRAM:** IND/GR, CDL/SNL. Log the Mesa Verde from TD Intermediate Casing shoe.

##### **C. NATURAL GAUGES:** Gauge any noticeable increases in gas flow. Record all gauges in Tour book and on morning reports.

#### **II. DRILLING**

##### **A. MUD PROGRAM:** Clear water with benex to 7" casing point. Convert to a LSND mud to log and run pipe. Treat for lost circulation as necessary. Obtain 100% returns prior to cementing. Notify Engineering of any mud losses.

##### **B. BOP TESTING:** While drill pipe is in use, the pipe rams will be function tested not less than once each day. The blind rams will be function tested once each trip. The anticipated reservoir is expected to be less than 1300 psi, so the rams will be tested to 1500 psi. The drum brakes will be inspected and tested each tour. All tests, inspections and SPR's will be recorded in the tour book as to time and results.



**2M – BOP ARRANGEMENT**

**2M SYSTEM:**

- Annular preventer or double ram or two rams with one being blind and one being a pipe ram
- Kill line (2 inch minimum)
- 1 kill line valve (2 inch minimum)
- 1 choke line valve
- 2 chokes (refer to diagram)
- Upper kelly cock valve with handle available
- Safety valve and subs to fit all drill strings in use
- Pressure gauge on choke manifold
- 2 inch minimum choke line
- Fill-up line above uppermost preventer

Anticipated reservoir pressure is expected to be less than 1300 psi on all encountered zones.

All ram type preventers and related equipment will be hydraulically tested at nipple-up and after any use under pressure to 1500 psi. The pipe and blind rams will be activated and checked for operational readiness each trip. All checks of the BOP stack and equipment will be noted on the daily drilling report. The BOP equipment will include a kelly cock with handle, floor safety valve with changeovers for each tool joint in the string and choke manifold all rated to 2000 psi