

District I  
1625 N. French Dr., Hobbs, NM 88240  
District II  
1301 W. Grand Avenue, Artesia, NM 88210  
District III  
1000 Rio Brazos Road, Aztec, NM 87410  
District IV  
1220 S. St. Francis Dr., Santa Fe, NM 87505

State of New Mexico  
Energy Minerals and Natural Resources

Form C-101  
Revised March 17, 1999

Oil Conservation Division  
1220 South St. Francis Dr.  
Santa Fe, NM 87505

Submit to appropriate District Office  
State Lease - 6 Copies  
Fee Lease - 5 Copies

☐ AMENDED REPORT

APPLICATION FOR PERMIT TO DRILL, RE-ENTER, DEEPEN, PLUGBACK, OR ADD A ZONE

<sup>1</sup> Operator Name and Address  
HUNTINGTON ENERGY, L.L.C.  
6301 Waterford Blvd., Suite 400  
Oklahoma City, Oklahoma 73118-1191

<sup>2</sup> OGRID Number  
208706

<sup>3</sup> API Number  
30 - 045 - 30970

<sup>3</sup> Property Code  
29215

<sup>5</sup> Property Name  
Bandy

<sup>6</sup> Well No.  
1

<sup>7</sup> Surface Location

UL or lot no.	Section	Township	Range	Lot Idn	Feet from the	North/South line	Feet from the	East/West line	County
K	15	31N	11W		1750'	South	1685'	West	San Juan

<sup>8</sup> Proposed Bottom Hole Location If Different From Surface

UL or lot no.	Section	Township	Range	Lot Idn	Feet from the	North/South line	Feet from the	East/West line	County

<sup>9</sup> Proposed Pool 1  
Wildcat Paradox

<sup>10</sup> Proposed Pool 2

<sup>11</sup> Work Type Code N	<sup>12</sup> Well Type Code G	<sup>13</sup> Cable/Rotary Rotary	<sup>14</sup> Lease Type Code P	<sup>15</sup> Ground Level Elevation 5893'
<sup>16</sup> Multiple N	<sup>17</sup> Proposed Depth 13,000'	<sup>18</sup> Formation Pennsylvanian	<sup>19</sup> Contractor SST #53	<sup>20</sup> Spud Date 2/01/02

<sup>21</sup> Proposed Casing and Cement Program

Hole Size	Casing Size	Casing weight/foot	Setting Depth	Sacks of Cement	Estimated TOC
26"	20"	94#	500'	1400 sx	Surface
17½"	13¾"	68# & 41#	3200'	2800 sx	Surface
12¼"	9⅝"	43.5# & 47#	7300'	1000 sx	3000'
8½"	5½"	17# & 20#	13000'	700 sx	7000'

<sup>22</sup> Describe the proposed program. If this application is to DEEPEN or PLUG BACK, give the data on the present productive zone and proposed new productive zone. Describe the blowout prevention program, if any. Use additional sheets if necessary.

BOP stack is 13¾" 5000 psi rating with 1 pipe ram, 1 blind and 5000 psi annular. Maximum anticipated surface pressure for this well will not exceed the working pressure of the proposed BOP system. All manifold system is rated at 5000 psi and will be tested to maximum pressure.

<sup>23</sup> I hereby certify that the information given above is true and complete to the best of my knowledge and belief.

Signature:

Printed name: David M. Herritt

Title: Managing Member

Date: 12/21/01

Phone: (405) 840-9876

OIL CONSERVATION DIVISION

Approved by:

Title:

Approval Date: JAN - 9 2002

Expiration Date: JAN - 9 2003

Conditions of Approval:

Attached ☐

District I  
PO Box 1980, Hobbs, NM 88241-1980

District II  
PO Drawer DD, Artesia, NM 88211-0719

District III  
1000 Rio Brazos Rd., Aztec, NM 87410

District IV  
PO Box 2088, Santa Fe, NM 87504-2088

State of New Mexico  
Energy, Minerals & Natural Resources Department

OIL CONSERVATION DIVISION  
PO Box 2088  
Santa Fe, NM 87504-2088

Form C-102  
Revised February 21, 1994  
Instructions on back  
Submit to Appropriate District Office  
State Lease - 4 Copies  
Fee Lease - 3 Copies

☐ AMENDED REPORT

WELL LOCATION AND ACREAGE DEDICATION PLAT

*API Number 30-045-30970		*Pool Code 97178	*Pool Name WC 31N 11W 15, PENNSYLVANIAN, PARADOK
*Property Code 29215	*Property Name BANDY 15		*Well Number 1
*OGRID No. 208706	*Operator Name HUNTINGTON ENERGY, LLC		*Elevation 5893'

10 Surface Location

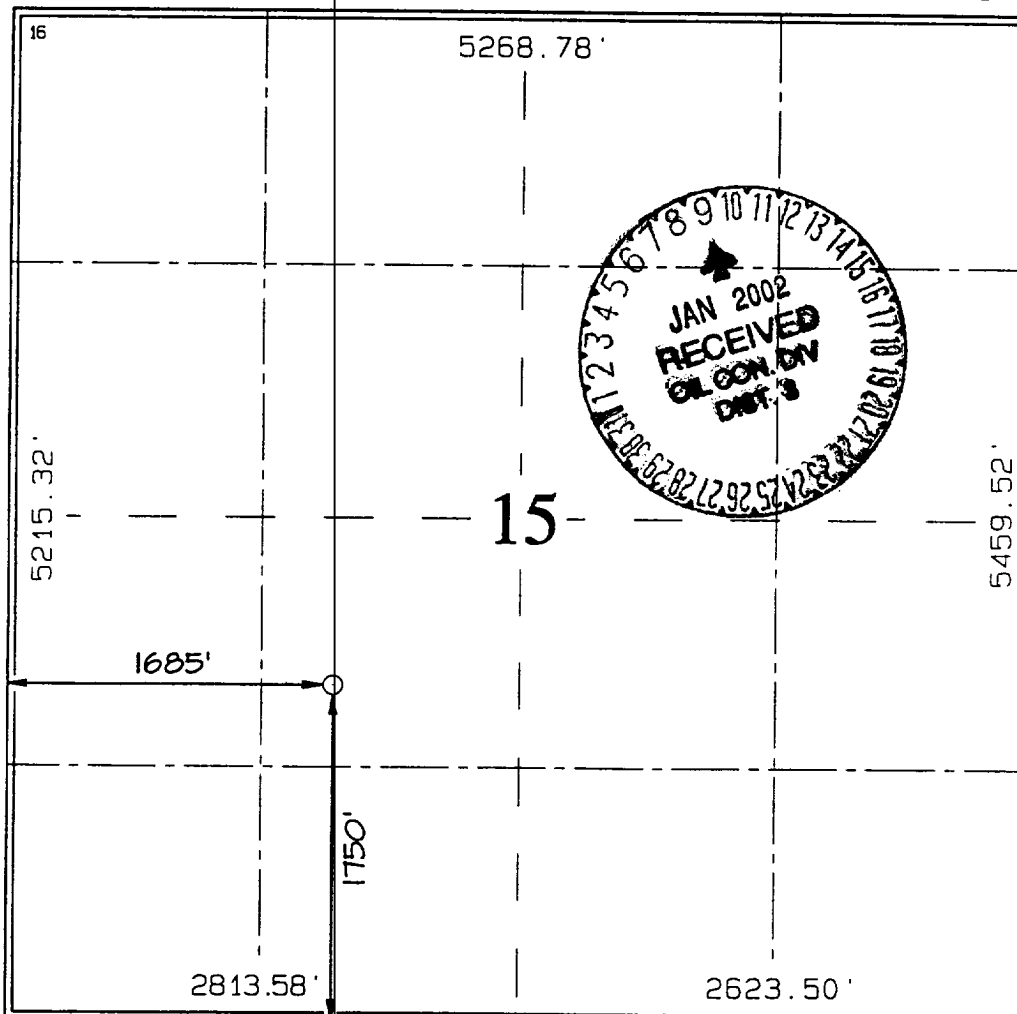
UL or lot no.	Section	Township	Range	Lot Idn	Feet from the	North/South line	Feet from the	East/West line	County
K	15	31N	11W		1750	SOUTH	1685	WEST	SAN JUAN

11 Bottom Hole Location If Different From Surface

UL or lot no.	Section	Township	Range	Lot Idn	Feet from the	North/South line	Feet from the	East/West line	County

12 Dedicated Acres 640 AC	13 Joint or Infill	14 Consolidation Code	15 Order No.
------------------------------	--------------------	-----------------------	--------------

NO ALLOWABLE WILL BE ASSIGNED TO THIS COMPLETION UNTIL ALL INTERESTS HAVE BEEN CONSOLIDATED OR A NON-STANDARD UNIT HAS BEEN APPROVED BY THE DIVISION



17 OPERATOR CERTIFICATION

I hereby certify that the information contained herein is true and complete to the best of my knowledge and belief

Signature  
David Herritt  
Printed Name  
Member  
Title  
Date

18 SURVEYOR CERTIFICATION

I hereby certify that the well location shown on this plat was plotted from field notes of actual surveys made by me or under my supervision, and that the same is true and correct to the best of my belief.

Survey Date: NOVEMBER 14, 2001

Signature and Seal of Professional Surveyor



JASON C. EDWARDS  
Certificate Number 15269

This topographic map of San Juan County, New Mexico, depicts a proposed route (thick solid line) traversing the region. The route begins in the upper left, descends through Tucker Canyon, continues south through Bohanan Canyon, and then follows the eastern bank of the Rio Grande. Key geographical features and labels include:

- Canyons:** Tucker Canyon, Bohanan Canyon, and Flume Canyon.
- Rivers:** The Rio Grande flows along the eastern edge of the map.
- Contour Lines:** Numerous contour lines indicate elevation, with labels such as 5700, 5800, 5900, and 6000.
- Spot Elevations:** Numerous numerical spot elevations are scattered across the map, including 5710, 5720, 5730, 5740, 5750, 5760, 5770, 5780, 5790, 5800, 5810, 5820, 5830, 5840, 5850, 5860, 5870, 5880, 5890, 5900, 5910, 5920, 5930, 5940, 5950, 5960, 5970, 5980, 5990, 6000, 6010, 6020, 6030, 6040, 6050, 6060, 6070, 6080, 6090, 6100, 6110, 6120, 6130, 6140, 6150, 6160, 6170, 6180, 6190, 6200, 6210, 6220, 6230, 6240, 6250, 6260, 6270, 6280, 6290, 6300, 6310, 6320, 6330, 6340, 6350, 6360, 6370, 6380, 6390, 6400, 6410, 6420, 6430, 6440, 6450, 6460, 6470, 6480, 6490, 6500, 6510, 6520, 6530, 6540, 6550, 6560, 6570, 6580, 6590, 6600, 6610, 6620, 6630, 6640, 6650, 6660, 6670, 6680, 6690, 6700, 6710, 6720, 6730, 6740, 6750, 6760, 6770, 6780, 6790, 6800, 6810, 6820, 6830, 6840, 6850, 6860, 6870, 6880, 6890, 6900, 6910, 6920, 6930, 6940, 6950, 6960, 6970, 6980, 6990, 7000, 7010, 7020, 7030, 7040, 7050, 7060, 7070, 7080, 7090, 7100, 7110, 7120, 7130, 7140, 7150, 7160, 7170, 7180, 7190, 7200, 7210, 7220, 7230, 7240, 7250, 7260, 7270, 7280, 7290, 7300, 7310, 7320, 7330, 7340, 7350, 7360, 7370, 7380, 7390, 7400, 7410, 7420, 7430, 7440, 7450, 7460, 7470, 7480, 7490, 7500, 7510, 7520, 7530, 7540, 7550, 7560, 7570, 7580, 7590, 7600, 7610, 7620, 7630, 7640, 7650, 7660, 7670, 7680, 7690, 7700, 7710, 7720, 7730, 7740, 7750, 7760, 7770, 7780, 7790, 7800, 7810, 7820, 7830, 7840, 7850, 7860, 7870, 7880, 7890, 7900, 7910, 7920, 7930, 7940, 7950, 7960, 7970, 7980, 7990, 8000, 8010, 8020, 8030, 8040, 8050, 8060, 8070, 8080, 8090, 8100, 8110, 8120, 8130, 8140, 8150, 8160, 8170, 8180, 8190, 8200, 8210, 8220, 8230, 8240, 8250, 8260, 8270, 8280, 8290, 8300, 8310, 8320, 8330, 8340, 8350, 8360, 8370, 8380, 8390, 8400, 8410, 8420, 8430, 8440, 8450, 8460, 8470, 8480, 8490, 8500, 8510, 8520, 8530, 8540, 8550, 8560, 8570, 8580, 8590, 8600, 8610, 8620, 8630, 8640, 8650, 8660, 8670, 8680, 8690, 8700, 8710, 8720, 8730, 8740, 8750, 8760, 8770, 8780, 8790, 8800, 8810, 8820, 8830, 8840, 8850, 8860, 8870, 8880, 8890, 8900, 8910, 8920, 8930, 8940, 8950, 8960, 8970, 8980, 8990, 9000, 9010, 9020, 9030, 9040, 9050, 9060, 9070, 9080, 9090, 9100, 9110, 9120, 9130, 9140, 9150, 9160, 9170, 9180, 9190, 9200, 9210, 9220, 9230, 9240, 9250, 9260, 9270, 9280, 9290, 9300, 9310, 9320, 9330, 9340, 9350, 9360, 9370, 9380, 9390, 9400, 9410, 9420, 9430, 9440, 9450, 9460, 9470, 9480, 9490, 9500, 9510, 9520, 9530, 9540, 9550, 9560, 9570, 9580, 9590, 9600, 9610, 9620, 9630, 9640, 9650, 9660, 9670, 9680, 9690, 9700, 9710, 9720, 9730, 9740, 9750, 9760, 9770, 9780, 9790, 9800, 9810, 9820, 9830, 9840, 9850, 9860, 9870, 9880, 9890, 9900, 9910, 9920, 9930, 9940, 9950, 9960, 9970, 9980, 9990, 10000.
- Other Labels:** "Tucker", "Bohanan", "Flume", "Rio Grande", "PHON", "34", "35", "36", "37", "38", "39", "40", "41", "42", "43", "44", "45", "46", "47", "48", "49", "50", "51", "52", "53", "54", "55", "56", "57", "58", "59", "60", "61", "62", "63", "64", "65", "66", "67", "68", "69", "70", "71", "72", "73", "74", "75", "76", "77", "78", "79", "80", "81", "82", "83", "84", "85", "86", "87", "88", "89", "90", "91", "92", "93", "94", "95", "96", "97", "98", "99", "100".

# Huntington Energy, LLC.

---

**Suite # 400**

**6301 Waterford Boulevard**

**Oklahoma City, OK 73118**

**(405) 840-9876**

**Fax (405) 840-2011**

December 20, 2001

Huntington Bandy # 1 Well  
Section 15-T31N-R11W  
San Juan County, New Mexico

Estimated Tops with a ground level elevation of 5895

	Depth
Picture Cliffs	2,600
Cliff House	4,500
Greenhorn	6,800
Morrison	7,196
Entrada	8,088
Cutler	9,180
Rico	10,966
Honaker Trail	11,721
Ismay	11,966
Desert Creek	12,191
Akah	12,345
Barker Creek	12,645
Alkali Gulch	12,843
Pinkerton Trail	13,151
Leadville	13,334

# Bandy #1-15

Depth	Formation	Hole Size	Drilling Problems	Csg Depth	Mud
		26"		20" @ 500'	Spud mud
1000'		17½"	Gas shows or wtr flow while on air.		
2600'	Pictured Cliff				
3000'					Drl w/air system 13⅜" set @ 3200'
4500'	Cliff House Point Lookout	12¼"			
5000'					Mud system MW 8.7 – 9.0, Vis: 45-50 Maintain LCM in system
6800'	Green Horn				
7200'	Morrison		Cmt pipe to surf	9⅝" @ 7300'	
	Entrada	8½"	Low press Possible lost circ.		
9200'	Cutler				
11000'	Rico		Gas shows		
11700'	Honaker Tr.		Gas shows		
	Ismay		Gas shows		
	Dessert Creek		Gas shows		
12350'	Akah				
	Barker Creek				
12850'	Alkali Gulch				
13000'					
TD @ 13000'				Run 5½" csg	