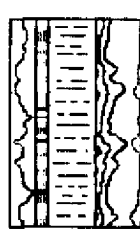


# SOFTROCK GEOLOGICAL SERVICES, INC.



591 County Rd. 233 Durango, CO 81301

(970) 247-8868 fax 247-5108



Scale 1:240 (5"=100') Imperial

Well Name: San Juan 32-8 Unit #258  
 Location: Sec. 15 T32N R8W San Juan County, NM  
 Licence Number: Drill out of 7" 6/20/02  
 Spud Date: Region: Ignacio Blanco Kf  
 Surface Coordinates: 2105' FSL  
 1798' FWL  
 Bottom Hole  
 Coordinates:  
 Ground Elevation (ft): 6940' K.B. Elevation (ft): 6928'  
 Logged Interval (ft): 3412' To: 3640' Total Depth (ft): 3640'  
 Formation: Fruitland  
 Type of Drilling Fluid: air mist

Printed by MUD.LOG from WellSight Systems Inc. 1-800-447-1534 www.wellsight.com

## OPERATOR

Company: Phillips Petroleum Company  
 Address: 5525 Highway 64  
 Farmington, NM 87401

## GEOLOGIST

Name: Danny Wyckoff, Bobby Bradley  
 Company: Softrock Geological Services  
 Address: 591 CR 233  
 Durango, CO 81301  
 (970) 247-8868 247-5108 fax

## Comments

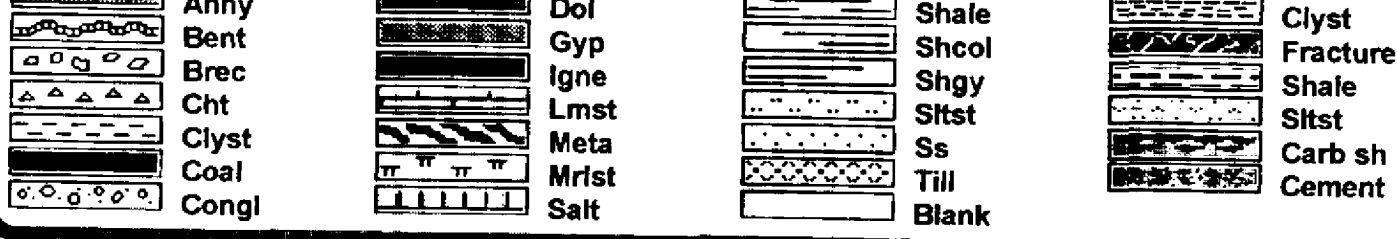
Key 18, David Green Company Man

FID Gas Chromatograph  
 FID Total Gas Detector

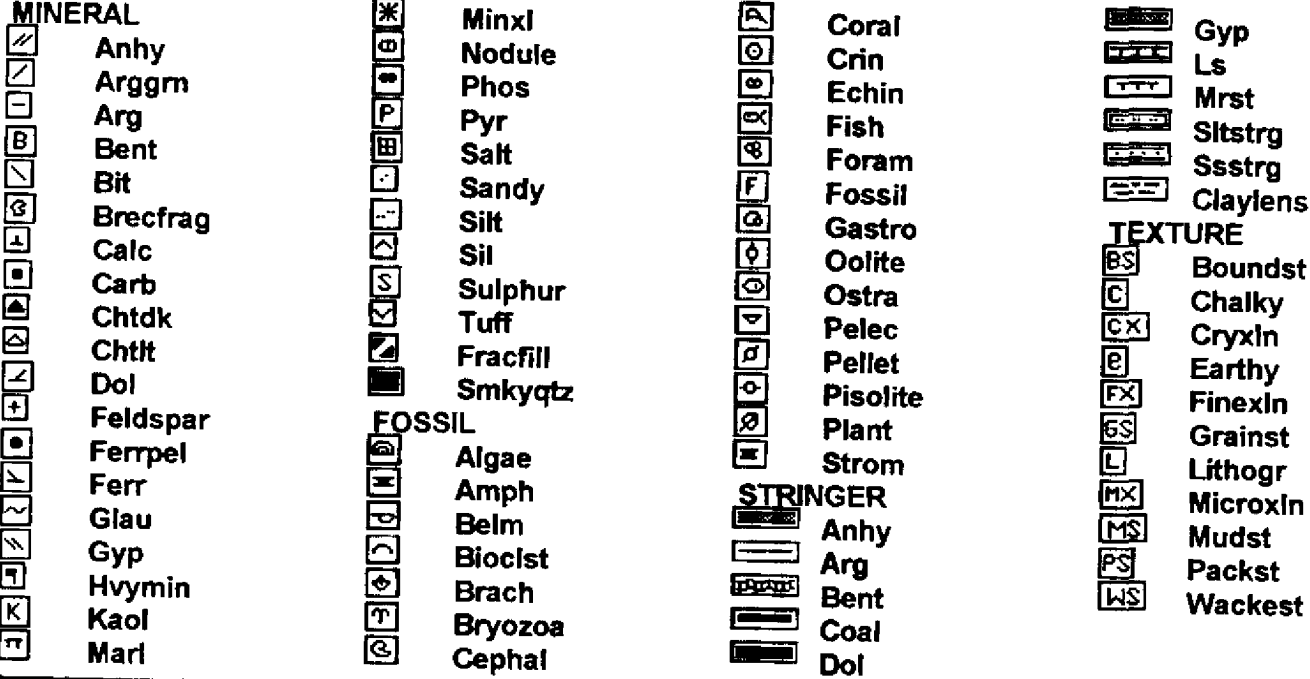
## Casing data

7" casing set at 3412'

## ROCK TYPES



## ACCESSORIES



## OTHER SYMBOLS

