

**UNITED STATES  
DEPARTMENT OF THE INTERIOR  
BUREAU OF LAND MANAGEMENT**

**APPLICATION FOR PERMIT TO DRILL OR DEEPEN**

1a. TYPE OF WORK <b>DRILL</b> <input checked="" type="checkbox"/> <b>DEEPEN</b> <input type="checkbox"/>			5. LEASE DESIGNATION AND SERIAL NO. <b>SF078243</b>	
b. TYPE OF WELL OIL WELL <input type="checkbox"/> GAS WELL <input checked="" type="checkbox"/> OTHER <input type="checkbox"/> SINGLE ZONE <input checked="" type="checkbox"/> MULTIPLE ZONE <input type="checkbox"/>			6. IF INDIAN, ALLOTTEE OR TRIBE NAME  	
2. NAME OF OPERATOR <b>Roddy Production Company Inc.</b>			7. UNIT AGREEMENT NAME  	
3. ADDRESS AND TELEPHONE NO. <b>P. O. Box 2221, Farmington, NM, 87499 (505) 325-5750</b>			8. FARM OR LEASE NAME, WELL NO. <b>Owen No. 2B</b>	
4. LOCATION OF WELL (Report location clearly and in accordance with any State requirements.) At surface <b>1250' FNL - 2035' FEL, Section 19, T31N, R12W, NMPM</b> At proposed prod. zone Same			9. API WELL NO. <b>30-045-31146</b>	
14. DISTANCE IN MILES AND DIRECTION FROM NEAREST TOWN OR POST OFFICE* <b>7 miles northwest of Flora Vista, NM</b>			10. FIELD AND POOL, OR WILDCAT <b>Blanco Mesa Verde</b>	
15. DISTANCE FROM PROPOSED* LOCATION TO NEAREST PROPERTY OR LEASE LINE, FT. <b>1250'</b> <small>(Also to nearest rdg. unit line, if any)</small>			11. SEC., T., R., M., OR BLK AND SURVEY OR AREA <b>Section 19, T31N, R12W, NMPM</b>	
16. NO. OF ACRES IN LEASE <b>318.24</b>			12. COUNTY <b>San Juan</b>	
17. NO. OF ACRES ASSIGNED TO THIS WELL <b>318.24</b>			13. STATE <b>New Mexico</b>	
18. DISTANCE FROM PROPOSED LOCATION* TO NEAREST WELL, DRILLING, COMPLETED, OR APPLIED FOR, ON THIS LEASE, FT. <b>1300'</b>			19. PROPOSED DEPTH <b>5183</b>	
20. ROTARY OR CABLE TOOLS <b>Rotary</b>			21. ELEVATIONS (Show whether DF, RT, GR, etc.) <b>5941' GL</b> This action is subject to technical and procedural review pursuant to 43 CFR 3165.3 and appeal pursuant to 43 CFR 3165.4	
<b>PROPOSED CASING AND CEMENTING PROGRAM</b>			22. APPROX. DATE WORK WILL START* <b>August 2002</b>	

SIZE OF HOLE	GRADE, SIZE OF CASING	WEIGHT PER FOOT	SETTING DEPTH	
12.250"	8.625", J-55	24	300'	247.8 cf, circulate to surface
7.875"	4.500", J-55	10.5	5183'	1773.5 cf in two stages, circulate to surface
				DV tool set at 3500'

Roddy Production Company Inc. proposes to spud in the Nacimiento formation. Drill 12.250" surface hole to 300' using fresh water mud. Run and cement surface casing with adequate volume to circulate to surface. WOC 12 hours. Nipple up casing head and BOPE. Pressure test BOPE to minimum of 600 psig for 15 minutes. Drill 7.875" hole to Total Depth using fresh water mud. No abnormal pressure or poisonous gas is anticipated. Run open hole logs from TD to surface casing shoe. Run and cement production casing in two stages with adequate cement volume to circulate to surface. Release drilling rig. Move in completion rig. Run cased hole correlation logs. Pressure test casing to 3000 psig for 15 minutes. Perforate select Mesa Verde intervals and stimulate with fresh water base fluid and 1500 # per foot sand. Install production equipment.

Surface is Federal, BLM.

IN ABOVE SPACE DESCRIBE PROPOSED PROGRAM: If proposal is to deepen, give data on present productive zone and proposed new productive zone. If proposal is to drill or deepen directionally, give pertinent data on subsurface locations and measured true vertical depths. Give blowout preventer program, if any.

24.

SIGNED *Robert E. Fiddle* TITLE Business Manager DATE July 4, 2002

(This space for Federal or State office use)

PERMIT NO. \_\_\_\_\_ APPROVAL DATE \_\_\_\_\_

Application approval does not warrant or certify that the applicant holds legal or equitable title to those rights in the subject lease which would entitle the applicant to conduct operations thereon.

CONDITIONS OF APPROVAL, IF ANY:

APPROVED BY *As/ David J. Mankiewicz* TITLE *AFM* DATE *9/17/02*

**NMOCD**

District I  
PO Box 1980, Hobbs, NM 88241-1980

District II  
PO Drawer DD, Artesia, NM 88211-0719

District III  
1000 Rio Brazos Rd., Aztec, NM 87410

District IV  
PO Box 2088, Santa Fe, NM 87504-2088

State of New Mexico  
Energy, Minerals & Natural Resources Department

OIL CONSERVATION DIVISION  
PO Box 2088  
Santa Fe, NM 87504-2088

Form C-102  
Revised February 21, 1994  
Instructions on back  
Submit to Appropriate District Office  
State Lease - 4 Copies  
Fee Lease - 3 Copies

☐ AMENDED REPORT

WELL LOCATION AND ACREAGE DEDICATION PLAT

*API Number <b>30-045-31146</b>		*Pool Code <b>72319</b>	*Pool Name <b>BLANCO MESAVERDE</b>
*Property Code <b>25717</b>	*Property Name <b>OWEN</b>		*Well Number <b>2B</b>
*OGRIID No. <b>36845</b>	*Operator Name <b>RODDY PRODUCTION COMPANY, INC.</b>		*Elevation <b>5941'</b>

<sup>10</sup> Surface Location

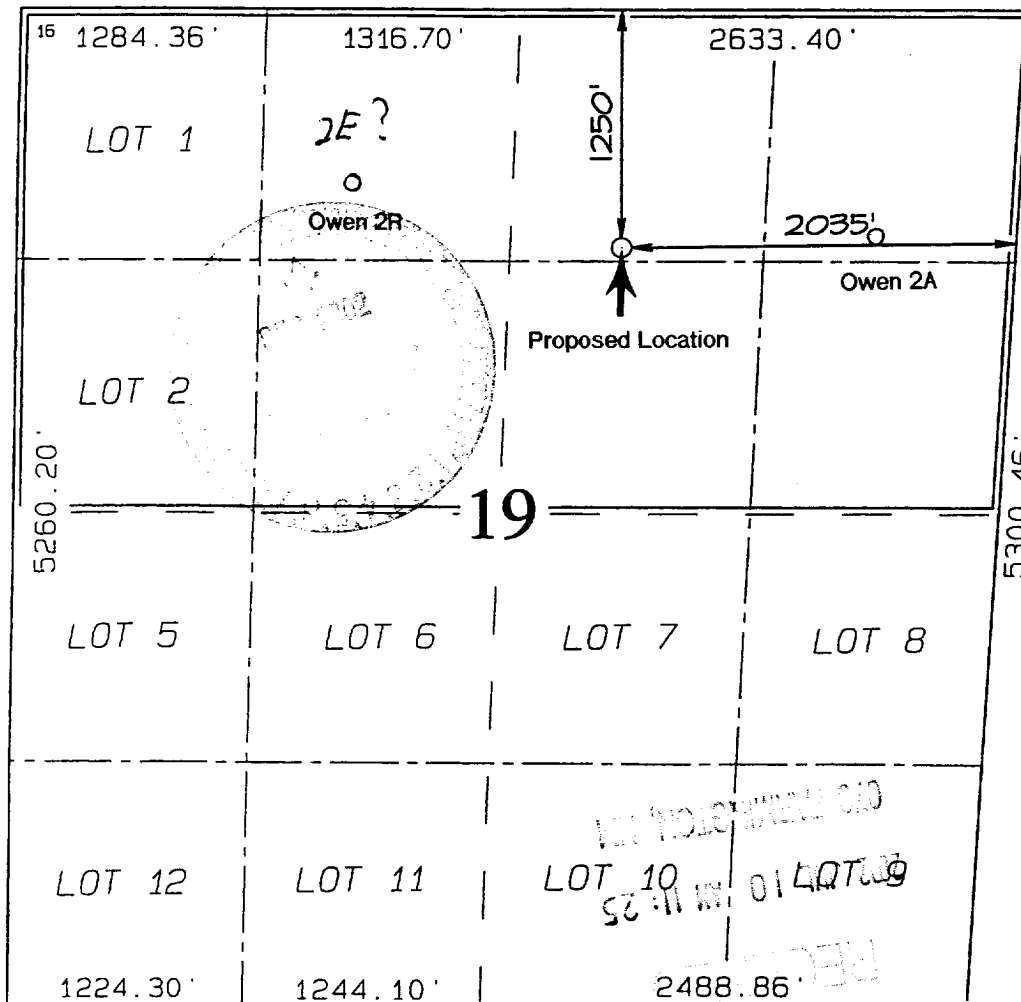
UL or lot no.	Section	Township	Range	Lot Idn	Feet from the	North/South line	Feet from the	East/West line	County
B	19	31N	12W		1250	NORTH	2035	EAST	SAN JUAN

<sup>11</sup> Bottom Hole Location If Different From Surface

UL or lot no.	Section	Township	Range	Lot Idn	Feet from the	North/South line	Feet from the	East/West line	County

<sup>12</sup> Dedicated Acres <b>318.24 Acres - (N/2)</b>	<sup>13</sup> Joint or Infill <b>Y</b>	<sup>14</sup> Consolidation Code	<sup>15</sup> Order No.
--	---	----------------------------------	-------------------------

NO ALLOWABLE WILL BE ASSIGNED TO THIS COMPLETION UNTIL ALL INTERESTS HAVE BEEN CONSOLIDATED  
OR A NON-STANDARD UNIT HAS BEEN APPROVED BY THE DIVISION



<sup>17</sup> OPERATOR CERTIFICATION

I hereby certify that the information contained herein is true and complete to the best of my knowledge and belief

*Robert E. Fielder*  
Signature

Robert E. Fielder  
Printed Name

Business Manager  
Title

07/04/02  
Date

<sup>18</sup> SURVEYOR CERTIFICATION

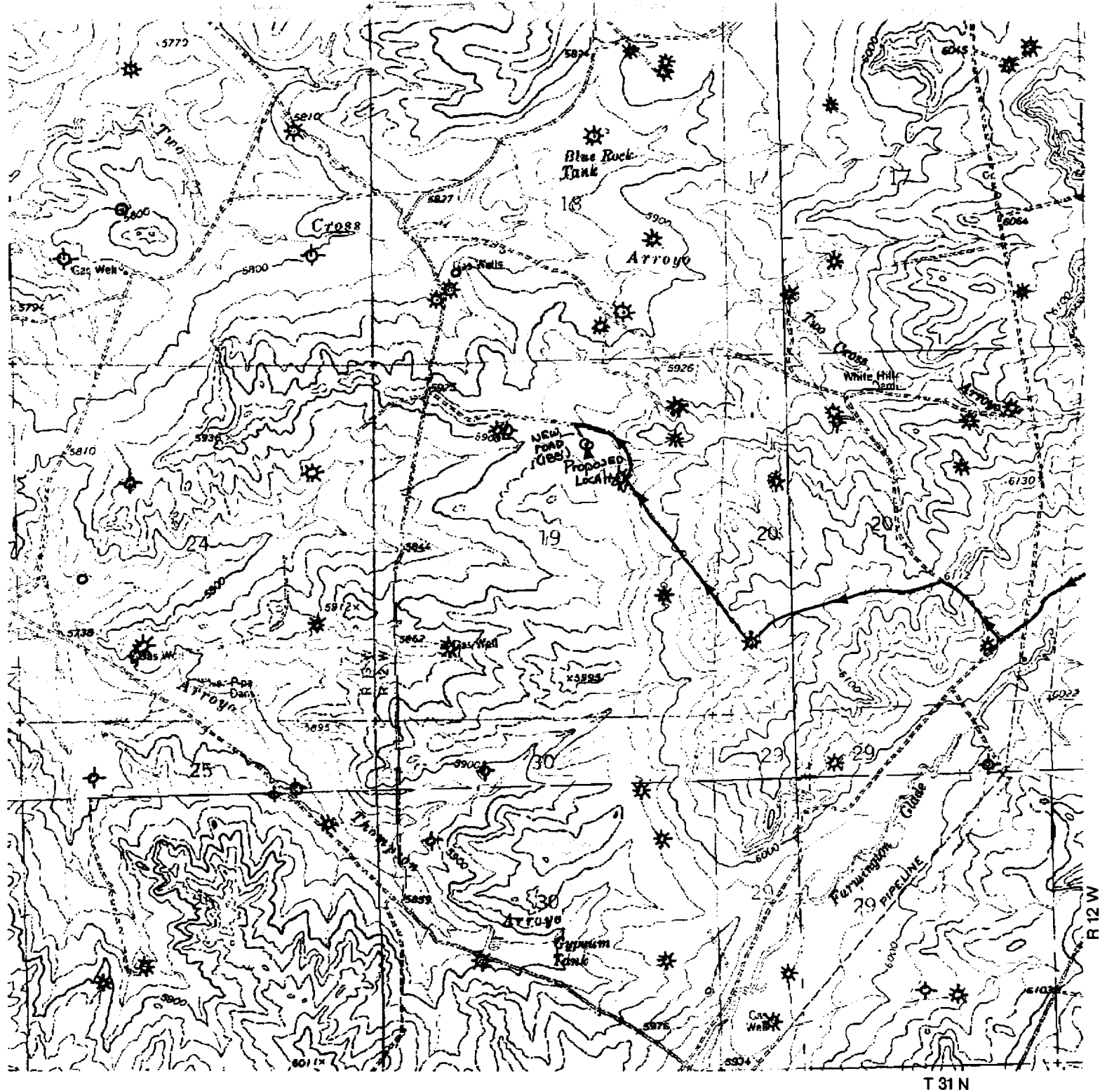
I hereby certify that the well location shown on this plat was plotted from field notes of actual surveys made by me or under my supervision, and that the same is true and correct to the best of my belief.

Date of Survey: MAY 2, 2002

Signature and Seal of Professional Surveyor



*Jason C. Edwards*  
Certificate Number 15269



**Vicinity Map**  
 Roddy Production Company, Inc.  
 Owen No. 2B  
 1250' FNL - 2035' FEL  
 Section 19, T 31 N, R 12 W, NMPM  
 San Juan Co., New Mexico

RODDY PRODUCTION  
Owen No. 2B  
1250 ' FNL & 2035 ' FEL  
Section 19, T31N, R12W, NMPM  
San Juan County, New Mexico

TEN POINT PROGRAM

1. Surface Formation: NACIMIENTO
2. Surface Elevation: 5941' GL.
3. Estimated Formation Tops:

<u>Formation</u>	<u>Top</u>	<u>Expected Production</u>
Nacimiento	Surface	
Ojo Alamo	476 '	
Kirtland	554 '	
Fruitland	1844'	
Basal Fruitland Coal	2046'	Gas
Pictured Cliffs	2274'	Gas
Lewis	2383'	
Mesa Verde	2718'	
Huerfanito	3018'	
Cliff House	3839'	Gas / water
Menefee	4069'	Gas
Point Lookout	4643'	Gas
Mancos	5143'	
TOTAL DEPTH	5183'	

4. Casing and Cementing Program:

A string of 8 5/8", 24 ppf, J or K - 55, ST&C casing will be run to 300 '± in a 12 1/4" hole and cemented in place in a single stage with 210 sacks of Class B cement with 3 % CaCl<sub>2</sub> and 0.25 pps celloflake ( yield = 1.18 cf / sk ). This volume is 100 % excess to circulate to surface assuming a gauge hole. If the cement does not circulate to surface, the cement will be topped off through a string on 1" pipe run in the 9 5/8" by 12 1/4" annulus. Minimum clearance between the couplings and hole is 1.3125". Prior to drilling out the shoe the casing and BOPE will be tested to a minimum of 600 psig for 15 minutes. Safety factors used in the design of this casing were: burst = 1.1; collapse = 1.125; and tension = 1.8 or 100,000 lb. overpull, whichever is greater.

4. Casing and Cementing Program:- continued

Production casing will be 4 1/2", 10.5 ppf, J or K - 55, ST&C casing will be run from surface to Total Depth in a 7 7/8" hole. This string will be cemented to the surface in two stages. A mechanical DV tool will be set at approximately 3500 feet. The first stage will be with 400 sacks of 50/50 Class B Poz containing 2% gel, 5 pps gilsonite and 0.25 pps celloflake ( yield = 1.44 cf / sk ). Slurry volume assumes 50 % excess over gauge hole volume. Circulate and WOC between stages for 4 hours. Cement stage two with 550 sacks 35/65 Class B Poz containing 6% gel, 5 pps gilsonite, 0.25 pps celloflake and 2% CaCl (yield = 2.07 cf / sk). Follow with 50 sacks Class B with 1% CaCl (yield = 1.19 cf / sk). This volume assumes a 50% excess over gauge hole volume. Cement volume is subject to change after review of the open hole caliper log. Minimum clearance between the casing and hole is 1.438". Safety factors used in the design of this casing were: burst = 1.1; collapse = 1.125; and tension = 1.8 or 100,000 lb. overpull, whichever is greater.

Cetralizers: Surface string: 3 - 8 5/8" X 12 1/4" regular centralizers run in middle of shoe joint and then spaced evenly between shoe joint and 100 '. Production Casing String: 20 - 4 1/2" X 7 7/8" regular centralizers and 5 - 4 1/2" X 7 7/8" turbolizers will be spaced such that a minimum of two are located above and below the Basal Fruitland Coal; a minimum of one turbolizer will be run just below the base and another just above the base of the Ojo Alamo.

Float Equipment: Surface string: Cement nose guide shoe. Production casing string: Cement nose float shoe and auto fill float collar. A 4 1/2" mechcanical DV tool will be set at approximately 3500'.

Following the completion of each cementing operation, a sundry notice detailing the cement volumes and densities will be submitted.

5. Pressure Control Equipment:

A minimum of a 3M psi BOP well control system will be utilized. BOPE will be installed and pressure tested to a minimum of 600 psig before drilling out the surface casing shoe and then will be checked daily for correct mechanical operation. Blind rams will be operated on each trip out of the hole. The BOP stack and manifold will be tested to 1500 psig after removal to set 7" slips. 7" rams will be installed before running the intermediate casing string.

A full opening drill pipe safety valve will be on the drill floor at all times and will be capable of fitting all connections.