

UNITED STATES  
DEPARTMENT OF THE INTERIOR  
GEOLOGICAL SURVEY

## APPLICATION FOR PERMIT TO DRILL, DEEPEN, OR PLUG BACK

## 1a. TYPE OF WORK

DRILL ☒DEEPEN ☐PLUG BACK ☐

## b. TYPE OF WELL

OIL  
WELL ☒GAS  
WELL ☐

OTHER

SINGLE  
ZONE ☒MULTIPLE  
ZONE ☐

## 2. NAME OF OPERATOR

The Superior Oil Company

## 3. ADDRESS OF OPERATOR

P. O. Drawer 'G', Cortes, Colorado

## 4. LOCATION OF WELL (Report location clearly and in accordance with any State requirements.)\*

At surface

1975' from East line and 2282' from North line, Sec. 26.

At proposed prod. zone As Above

## 14. DISTANCE IN MILES AND DIRECTION FROM NEAREST TOWN OR POST OFFICE\*

36 miles SE of Cortes, Colorado

## 15. DISTANCE FROM PROPOSED\*

LOCATION TO NEAREST  
PROPERTY OR LEASE LINE, FT.  
(Also to nearest drlg. line, if any)

358'

18. DISTANCE FROM PROPOSED LOCATION\*  
TO NEAREST WELL, DRILLING, COMPLETED,  
OR APPLIED FOR, ON THIS LEASE, FT.

2607'

## 16. NO. OF ACRES IN LEASE

1920 Acres

## 19. PROPOSED DEPTH

1850'

17. NO. OF ACRES ASSIGNED  
TO THIS WELL

40 Acres

## 20. ROTARY OR CABLE TOOLS

Rotary

## 21. ELEVATIONS (Show whether DF, RT, GR, etc.)

5807' Gd.

## 22. APPROX. DATE WORK WILL START\*

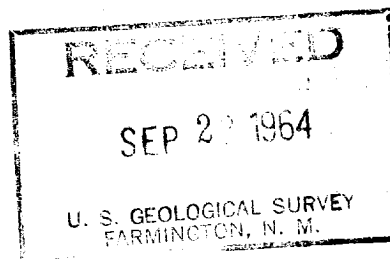
Sept. 24, 1964

## 23.

## PROPOSED CASING AND CEMENTING PROGRAM

SIZE OF HOLE	SIZE OF CASING	WEIGHT PER FOOT	SETTING DEPTH	QUANTITY OF CEMENT
11"	8-5/8"	24#	40'	To surface.
6-3/4"	4-1/2"	11.6#	1850'	Through productive zones.

Propose to drill a well to the Sanastee formation (Lower Gallup) to explore for oil and gas to an estimated T.D. of 1850'.



IN ABOVE SPACE DESCRIBE PROPOSED PROGRAM: If proposal is to deepen or plug back, give data on present productive zone and proposed new productive zone. If proposal is to drill or deepen directionally, give pertinent data on subsurface locations and measured and true vertical depths. Give blowout preventer program, if any.

24. ORIGINAL SIGNED BY  
J. C. GORDY  
SIGNED J. C. Gordy TITLE Drilling Engineer DATE Sept. 22, 1964

(This space for Federal or State office use)

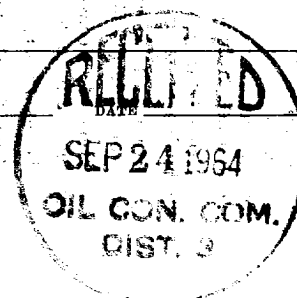
PERMIT NO. \_\_\_\_\_ APPROVAL DATE \_\_\_\_\_

APPROVED BY 120 TITLE \_\_\_\_\_

CONDITIONS OF APPROVAL, IF ANY:

JCG/njh

\*See Instructions On Reverse Side



NUMBER OF COPIES RECEIVED	
DISTRIBUTION	
SANTA FE	
FILE	
U.S.G.S.	
LAND OFFICE	
TRANSPORTER	OIL GAS
PRORATION OFFICE	
OPERATOR	

**NEW MEXICO OIL CONSERVATION COMMISSION**  
**WELL LOCATION AND ACREAGE DEDICATION PLAT**  
 SEE INSTRUCTIONS FOR COMPLETING THIS FORM ON THE REVERSE SIDE

FORM C-128  
 Revised 5/1/57

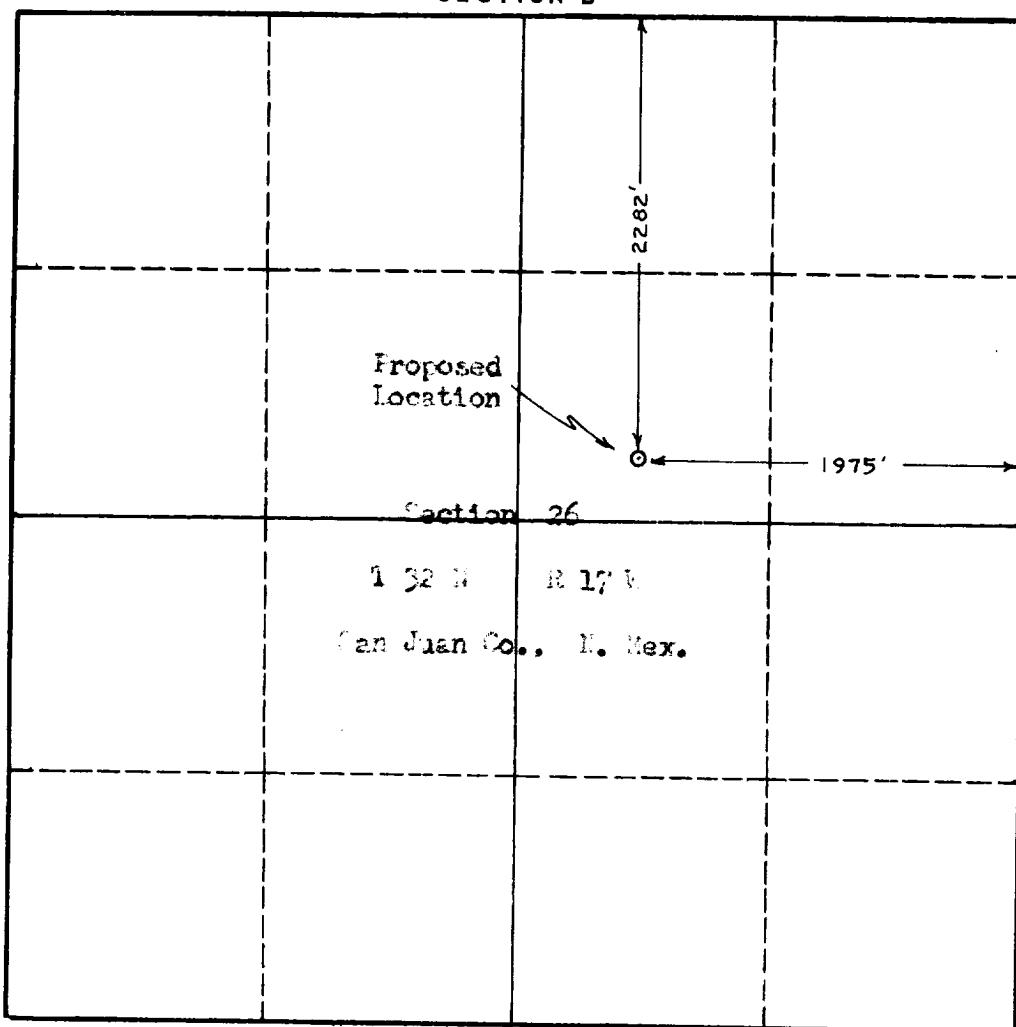
**SECTION A**

Operator <b>The Superior Oil Company</b>			Lease <b>Navajo-Ute Mountain</b>		Well No. <b>#32-26</b>
Unit Letter <b>-----</b>	Section <b>26</b>	Township <b>32N</b>	Range <b>17W</b>	County <b>San Juan</b>	
Actual Footage Location of Well: <b>1975'</b> feet from the <b>East</b> line and <b>2282'</b> feet from the <b>North</b> line					
Ground Level Elev. <b>5807'</b>	Producing Formation <b>-----</b>		Pool <b>Wildcat</b>		Dedicated Acreage: <b>40</b> Acres

1. Is the Operator the only owner in the dedicated acreage outlined on the plat below? YES ☒ NO \_\_\_\_ . ("Owner" means the person who has the right to drill into and to produce from any pool and to appropriate the production either for himself or for himself and another. (65-3-29 (e) NMSA 1935 Comp.)
2. If the answer to question one is "no," have the interests of all the owners been consolidated by communitization agreement or otherwise? YES \_\_\_\_ NO \_\_\_\_ . If answer is "yes," Type of Consolidation \_\_\_\_\_
3. If the answer to question two is "no," list all the owners and their respective interests below:

Owner	Land Description

**SECTION B**



**CERTIFICATION**

I hereby certify that the information in SECTION A above is true and complete to the best of my knowledge and belief.

ORIGINAL SIGNED BY  
 J. C. GORDY

Name	<b>J. C. Gordy</b>
Position	<b>Drilling Engineer</b>
Company	<b>The Superior Oil Company</b>
Date	<b>Sept. 22, 1964</b>

SEP 24 1964  
 OIL CON. COM.

I hereby certify that the well location shown on the plat in SECTION B was plotted from field notes of actual surveys made by me or under my supervision, and that the same is true and correct to the best of my knowledge and belief.

Date Surveyed	<b>June 25, 1964</b>
Registered Professional Engineer and/or Land Surveyor	<i>Indurist H. Reed</i>
Certificate No.	<b>N. Mex. 2795</b>

0 330 660 990 1320 1650 1980 2310 2640 2000 1500 1000 500 0