

**NEW MEXICO OIL CONSERVATION COMMISSION
WELL LOCATION AND ACREAGE DEDICATION PLAT**

Form C-102
Supersedes C-128
Effective 1-1-65

All distances must be from the outer boundaries of the Section.

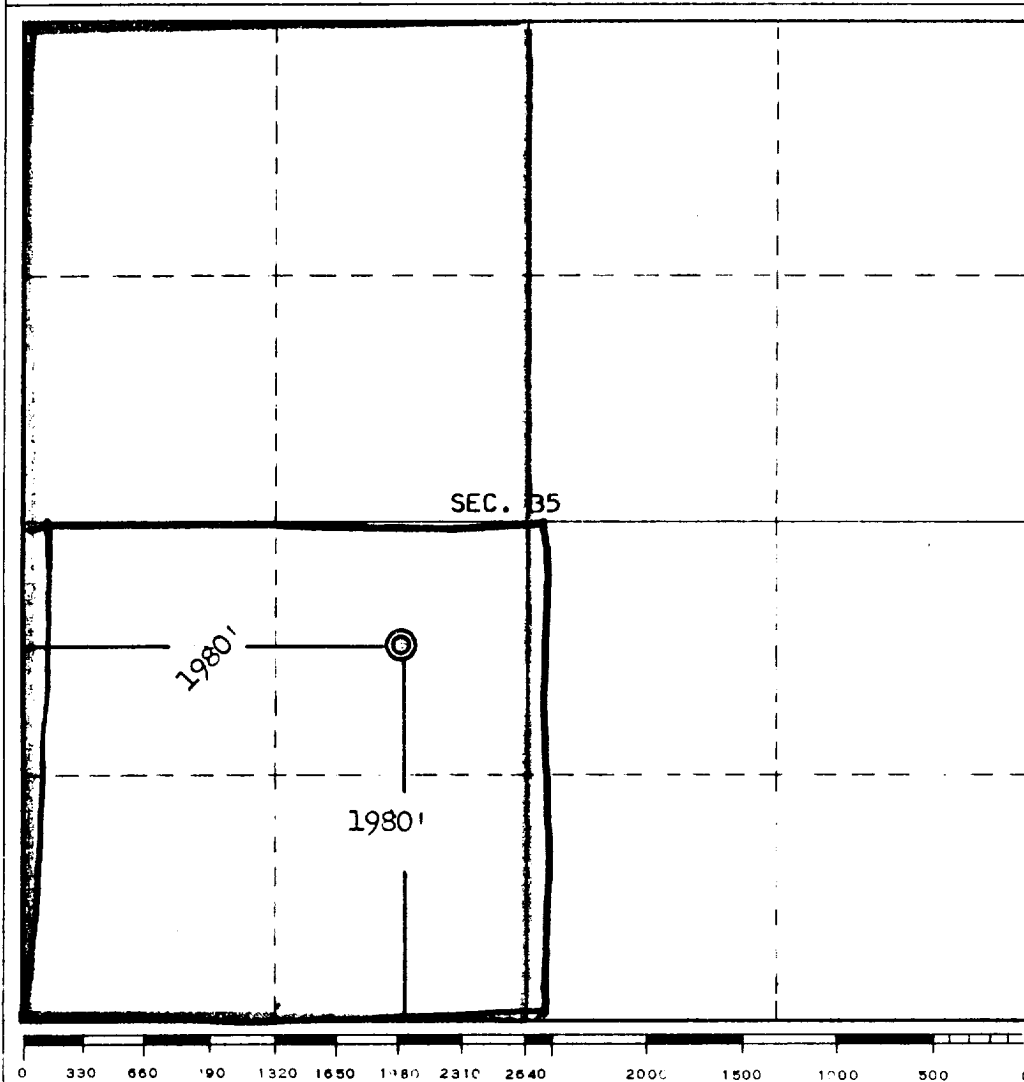
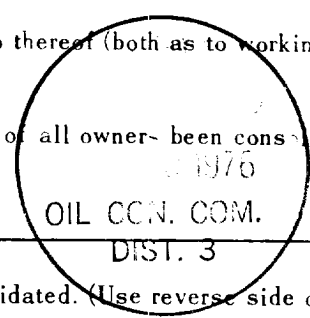
Operator Cities Service Oil Co.			Lease Ute "A"		Well No. 1
Unit Letter K	Section 35	Township 32 North	Range 16 West	County San Juan	
Actual Footage Location of Well: 1980 feet from the South line and 1980 feet from the West line					
Ground Level Elev. 6665	Producing Formation Mississippian		Pool Wildcat		Dedicated Acreage: 320 160 Acres

1. Outline the acreage dedicated to the subject well by colored pencil or hachure marks on the plat below.
2. If more than one lease is dedicated to the well, outline each and identify the ownership thereof (both as to working interest and royalty).
3. If more than one lease of different ownership is dedicated to the well, have the interests of all owners been consolidated by communitization, unitization, force-pooling, etc?

☐ Yes ☐ No If answer is "yes," type of consolidation _____

If answer is "no," list the owners and tract descriptions which have actually been consolidated. (Use reverse side of this form if necessary.) _____

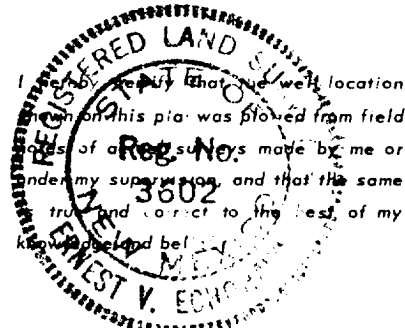
No allowable will be assigned to the well until all interests have been consolidated (by communitization, unitization, forced-pooling, or otherwise) or until a non-standard unit, eliminating such interests, has been approved by the Commission.



CERTIFICATION

I hereby certify that the information contained herein is true and complete to the best of my knowledge and belief.

Name *E. V. Echohawk*
 Position **Region Operation Manager**
 Company **Cities Service Oil Co.**
 Date **August 9, 1976**



Date Surveyed
July 28, 1976
 Registered Professional Engineer
and/or Land Surveyor

E. V. Echohawk
 Certificate No. **3602**
E. V. Echohawk LS