

NO. OF COPIES RECEIVED	6
DISTRIBUTION	
SANTA FE	1
FILE	1
U.S.G.S.	2
LAND OFFICE	2
OPERATOR	2

# NEW MEXICO OIL CONSERVATION COMMISSION

30-045-24392  
Form C-101  
Revised 1-1-65

5A. Indicate Type of Lease	
STATE <input type="checkbox"/>	FEE <input checked="" type="checkbox"/>
5. State Oil & Gas Lease No.	

## APPLICATION FOR PERMIT TO DRILL, DEEPEN, OR PLUG BACK

1a. Type of Work		7. Unit Agreement Name	
b. Type of Well DRILL <input checked="" type="checkbox"/> DEEPEN <input type="checkbox"/> PLUG BACK <input type="checkbox"/> OIL WELL <input type="checkbox"/> GAS WELL <input checked="" type="checkbox"/> OTHER <input type="checkbox"/> SINGLE ZONE <input type="checkbox"/> MULTIPLE ZONE <input type="checkbox"/>		8. Farm or Lease Name Cardon Com 80	
2. Name of Operator Tenneco Oil Company		9. Well No. 1	
3. Address of Operator 720 South Colorado Blvd., Denver, Colorado 80222		10. Field and Pool, or Wildcat Basin Dakota	
4. Location of Well UNIT LETTER <u>A</u> LOCATED <u>1130</u> FEET FROM THE <u>North</u> LINE AND <u>1050</u> FEET FROM THE <u>East</u> LINE OF SEC. <u>27</u> TWP. <u>32N</u> RGE. <u>13W</u> NMPM		12. County San Juan	
19. Proposed Depth 6990		19A. Formation Dakota	20. Rotary or C.T. Rotary
21. Elevations (Show whether DF, RT, etc.) 5897	21A. Kind & Status Plug. Bond Nation Wide	21B. Drilling Contractor Four Corners #11	22. Approx. Date Work will start 6/18/80

## PROPOSED CASING AND CEMENT PROGRAM

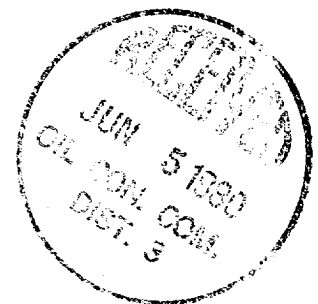
SIZE OF HOLE	SIZE OF CASING	WEIGHT PER FOOT	SETTING DEPTH	SACKS OF CEMENT	EST. TOP
12 1/4"	9 5/8"	36#	+300'	Circulate to surface	
8 3/4"	7"	23#	+2600'	Circulate to surface	
6 1/4"	4 1/2"	10.5# & 11.6#	+6990	Cement to liner hanger	

See Attached.

The gas is dedicated.

APPROVAL VALID  
FOR 90 DAYS UNLESS  
DRILLING COMMENCED,

EXPIRES 9-3-80



IN ABOVE SPACE DESCRIBE PROPOSED PROGRAM: IF PROPOSAL IS TO DEEPEN OR PLUG BACK, GIVE DATA ON PRESENT PRODUCTIVE ZONE AND PROPOSED NEW PRODUCTIVE ZONE. GIVE BLOWOUT PREVENTER PROGRAM, IF ANY.

I hereby certify that the information above is true and complete to the best of my knowledge and belief.

Signed M. L. Freeman Title Staff Production Analyst Date June 3, 1980

(This space for State Use)

APPROVED BY Frank T. Day TITLE SUPERVISOR DISTRICT #3 DATE JUN 4 1980

CONDITIONS OF APPROVAL, IF ANY:

## OIL CONSERVATION DIVISION

STATE OF NEW MEXICO

P. O. BOX 2088

Form C-107  
Revised 10-1-78

ENERGY AND MINERALS DEPARTMENT

SANTA FE, NEW MEXICO 87501

All distances must be from the outer boundaries of the Section.

Operator <b>TENNECO OIL COMPANY</b>			Lease <b>CARDON COM</b>		Well No. <b>1</b>
Unit Letter <b>A</b>	Section <b>27</b>	Township <b>32N</b>	Range <b>13W</b>	County <b>San Juan</b>	
Actual Footage Location of Well: <b>1130</b> feet from the <b>North</b> line and <b>1050</b> feet from the <b>East</b> line					
Ground Level Elev. <b>5897</b>	Producing Formation <b>Dakota</b>		Pool <b>Basin Dakota</b>		Dedicated Acreage: <b>320.00</b> Acres

1. Outline the acreage dedicated to the subject well by colored pencil or hachure marks on the plat below.
2. If more than one lease is dedicated to the well, outline each and identify the ownership thereof (both as to working interest and royalty).
3. If more than one lease of different ownership is dedicated to the well, have the interests of all owners been consolidated by communitization, unitization, force-pooling, etc?

☒ Yes ☐ No If answer is "yes," type of consolidation communitization in progress

If answer is "no," list the owners and tract descriptions which have actually been consolidated. (Use reverse side of this form if necessary.) \_\_\_\_\_

No allowable will be assigned to the well until all interests have been consolidated (by communitization, unitization, forced-pooling, or otherwise) or until a non-standard unit, eliminating such interests, has been approved by the Commission.

Pate Oil 100% fee

1130'

1050'

Monsanto Co.

Sec.

27

## CERTIFICATION

I hereby certify that the information contained herein is true and complete to the best of my knowledge and belief.

Name

M. L. Freeman

Position

Staff Production Analyst

Company

Tenneco Oil Company

Date

June 2, 1980

I hereby certify that the well location shown on this plat was plotted from field notes of actual surveys made by me or under my supervision, and that the same is true and correct to the best of my knowledge and belief.

Date Surveyed

April 12, 1980

Registered Professional Engineer  
and/or Land Surveyor

Fred B. Kear Jr.

Certificate No.

39502 KERR, JR.

TENNECO OIL COMPANY  
ROCKY MOUNTAIN DIVISION  
PENTHOUSE, 720 SOUTH COLORADO BOULEVARD  
DENVER, COLORADO 80222

DRILLING PROCEDURE

DATE: March 25, 1980

LEASE: Cardon Com

WELL NO.: 1

LOCATION: 1130' FNL, 1050' FEL  
Section 27, T 32N, R 13W  
San Juan County, New Mexico

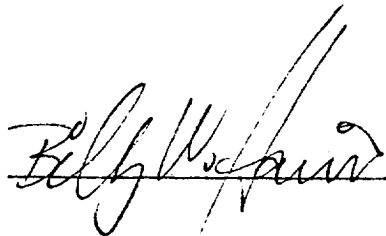
FIELD: Basin Dakota

ELEVATION: 5890' Est. G.L.

TOTAL DEPTH: 6990'

PROJECTED HORIZON: Dakota

SUBMITTED BY:



DATE:

3/25/80

APPROVED BY:



DATE:

3/25/80

BWH/ms

CC: Administration  
DSB Well File  
Field File

ESTIMATED FORMATION TOPS

Pictured Cliffs	2085'	(Water)
Cliffhouse	3750'	(Gas)
Menefee	3970'	(Water)
Point Lookout	4500'	(Gas)
Mancos	4750'	
Greenhorn	6650'	
Dakota	6770'	(Gas)
T.D.	6990'	

DRILLING, CASING, AND CEMENT PROGRAM

1. MIRURT.
2. Drill a 12-1/4" hole to + 300'. Run 9-5/8", 36#, K-55, ST&C casing to T.D. and cement to surface with Class "B" cement containing 2% CaCl<sub>2</sub>.
3. Cut off casing and weld on casing head. Pressure test weld to 1000 psig. NU BOP's and manifold. Pressure test casing, BOP's, and manifold to 1000 psig for 30 minutes.
4. Drill out shoe and reduce hole diameter to 8-3/4". Drill to + 2600' or 300' into the Lewis Shale, whichever is deeper. Run 7", 23#, K-55, ST&C casing to T.D. and cement to surface with 50/50 pozmix and a tail of 150 sacks Class "B" with 2% CaCl<sub>2</sub>.
5. Land casing in slips and cut off. Install drilling spool on casing head. Install rotating head, manifold, and flare line. Pressure test blind rams, manifold, and casing to 1000 psig for 15 minutes. Pick up drilling assembly and 3-1/2" drill pipe. Pressure test pipe rams to 1000 psig for 15 minutes.
6. Drill out of 7" with 6-1/4" bit using gas as circulating fluid. Drill a few feet of formation and then blow hole with gas until it is dusting. Drill to T.D.
7. Log the hole dry as requested by the Wellsite Geological Engineer and gauge the natural flow from the Dakota.
8. If productive, run 4-1/2", 11.6#, and 10.5#, K-55, ST&C liner to T.D. from + 150' into 7" casing. Circulate cement to liner top. Set liner hanger and reverse out excess cement.
9. If non-productive, plug and abandon as per appropriate regulatory agency requirements.
10. RD MORT.

## MUD PROGRAM

0-300'	Spud mud.
300-2600'	Low solids fresh water mud. No WL control.
2600-T.D.	Gas.

## EVALUATION

### Cores and DST's:

No cores or tests. Gauge natural flow from the Dakota.

### Deviation Surveys:

1. Survey surface hole at 100' intervals. Maximum allowable deviation at 250' is 1/2°.
2. From surface to total depth, deviation surveys must be taken every 500' or each trip, whichever is first. This may entail running the TOTCO on wire-line. Record each survey on the IADC Daily Report Sheet. Maximum allowable change in deviation is 1° per 100'. Maximum allowable deviation is 5°.

### Samples:

As requested by Wellsite Geological Engineer.

### Logs:

Surface to Mesa Verde: GR/SP/Induction: FDC/CNL/GR  
Below Mesa Verde to T.D.: GR/Induction: FDC/GR

## BLOWOUT EQUIPMENT

From 300' to T.D., as per USGS requirements.

Preventers must be checked for operation every 24 hours, and the check must be recorded on the IADC Daily Report Sheet.

## REPORTS

Drilling reports for the past 24 hours will include depth, footage, time distribution, activity breakdown, mud properties, bit record, bottom hole assembly, daily and cumulative mud costs, plus any other pertinent information, will be called into Tenneco Oil Company, Denver, Colorado, between 7:30 a.m. and 8:00 a.m.

1. 303-758-7130 (Office) Don Barnes  
303-758-7287 (Office) Don Barnes' private line, Monday-Friday (before 7:45 a.m.)  
303-936-0704 (Home) Don Barnes, weekends and holidays.
2. George Ramsey (Home) 303-771-5154.
3. John Owen (Home) 303-795-0221.

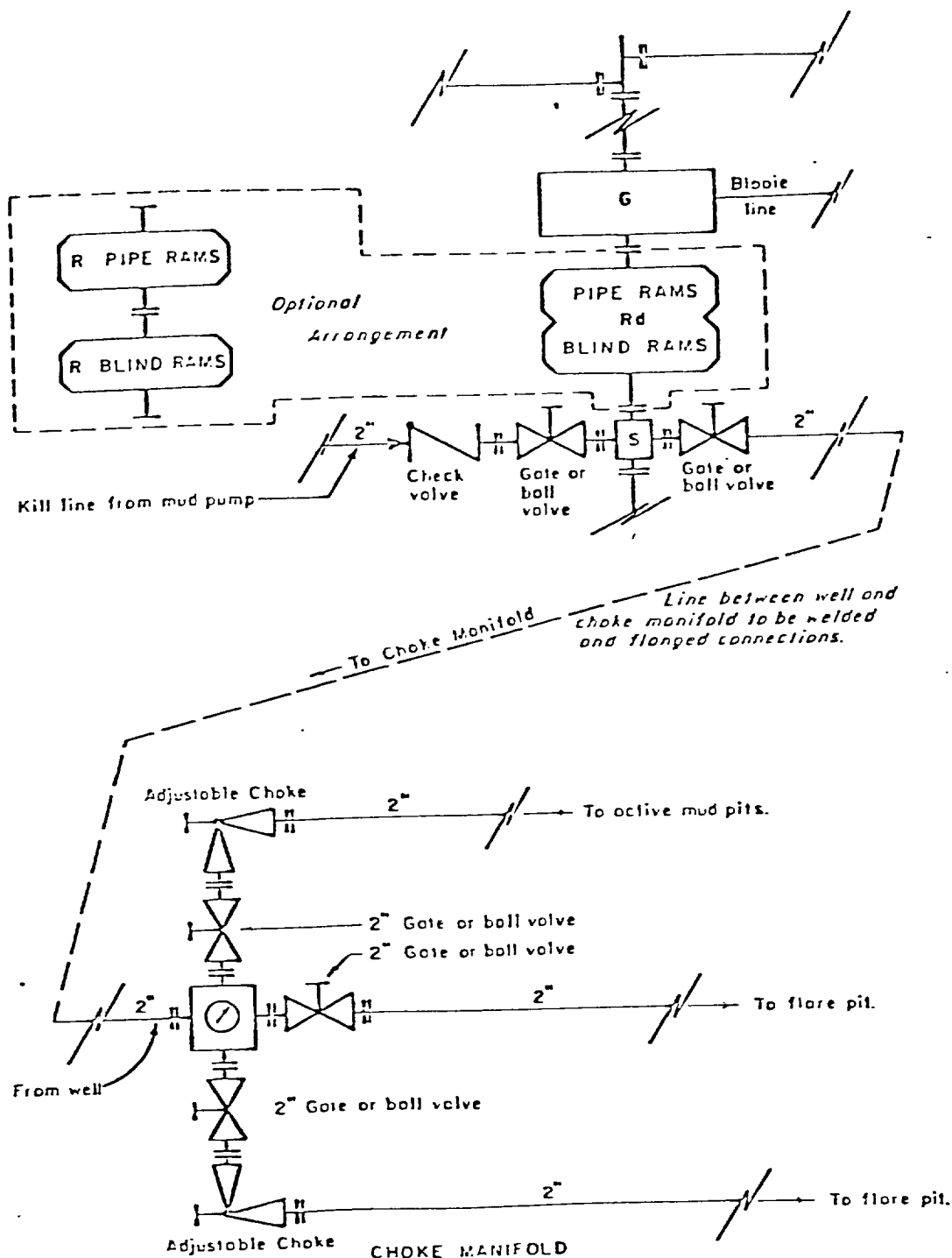
The yellow sheet of the IADC Report is to be filled out completely. The original copy of the drilling time recorder, and copies of any invoices from this well, signed and received for Tenneco Oil Company, will be mailed daily to:

TENNECO OIL COMPANY  
ROCKY MOUNTAIN DIVISION  
PENTHOUSE, 720 SOUTH COLORADO BOULEVARD  
DENVER, COLORADO 80222

ATTENTION: Drilling Department

### IN CASE OF EMERGENCY, NOTIFY THE FOLLOWING:

1. Mr. Don Barnes, Division Drilling Engineer.
2. Mr. George E. Ramsey, Jr., Drilling Engineers Supervisor
3. Mr. John W. Owen, Project Drilling Engineer.
4. Mr. Mike Lacey, Division Production Manager (Home 303-979-0509).



All equipment to be 3,000 psi working pressure except as noted.

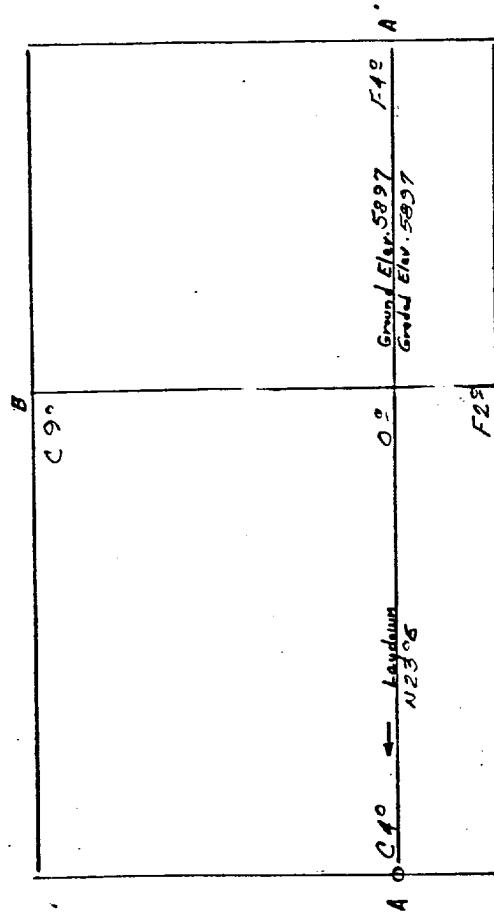
- Rd Double ram type preventer with two sets of rams.
- R Single ram type preventer with one set of rams.
- S Drilling spool with side outlet connections for choke and kill lines.
- G Rotating head 150 psi working pressure minimum

#### ARRANGEMENT C

TENNECO OIL COMPANY  
ROCKY MOUNTAIN DIVISION  
REQUIRED MINIMUM  
BLOWOUT PREVENTER AND  
CHOKE MANIFOLD



Location Profile for  
 TENNECO OIL COMPANY #1 CARDON COM  
 1130'FNL 1050'FEL Sec. 27-T32N-R13W  
 SAN JUAN COUNTY, NEW MEXICO



Vert. 1"=40'      A-A'      Horiz. 1"=100'

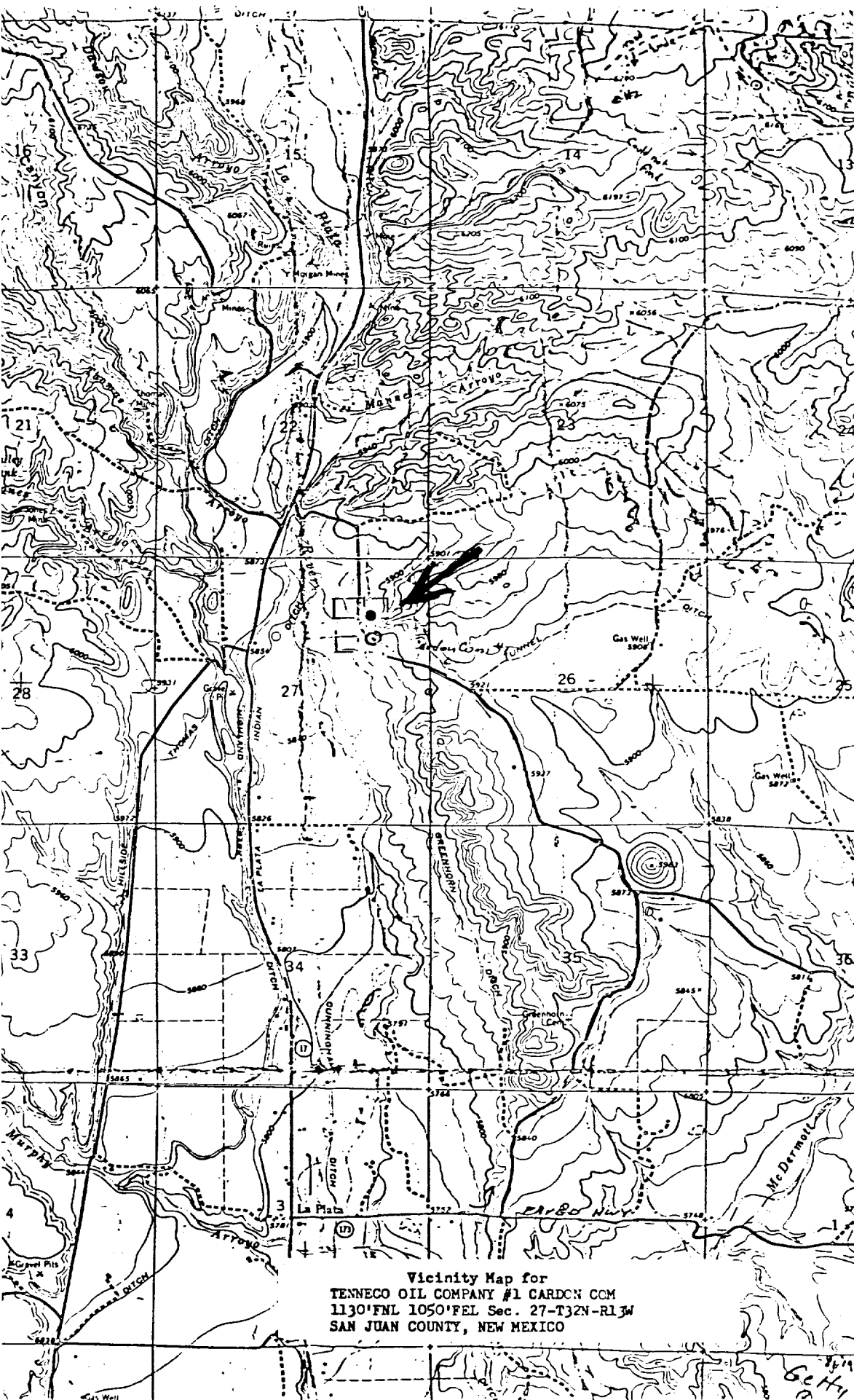
5700				
5870				
5880				

B-B'      Horiz. 1"=100'

5700				
5870				
5880				

Vert. 1"=40'      C-C'      Horiz. 1"=100'


D-D'      Horiz. 1"=100'

Vicinity Map for  
TENNECO OIL COMPANY #1 CARDON COM  
1130'FNL 1050'FEL Sec. 27-T32N-R13W  
SAN JUAN COUNTY, NEW MEXICO

6614  
244